

APPROVED FOR THE CITY OF SIOUXLAND

FILED BY: [Signature]

DATE: [Date]

APPROVED FOR THE CITY OF SIOUXLAND

FILED BY: [Signature]

DATE: [Date]

THE CITY OF SIOUXLAND, NEBRASKA, HAS REVIEWED THE PLANS AND SPECIFICATIONS FOR THE FLORENCE ADDITION AND HAS APPROVED THE SAME FOR THE CITY OF SIOUXLAND.

THE CITY ENGINEER HAS REVIEWED THE PLANS AND SPECIFICATIONS FOR THE FLORENCE ADDITION AND HAS APPROVED THE SAME FOR THE CITY OF SIOUXLAND.

SCALE 1" = 50'



LETTER RESERVATION

THE CITY OF SIOUXLAND, NEBRASKA, HAS REVIEWED THE PLANS AND SPECIFICATIONS FOR THE FLORENCE ADDITION AND HAS APPROVED THE SAME FOR THE CITY OF SIOUXLAND.

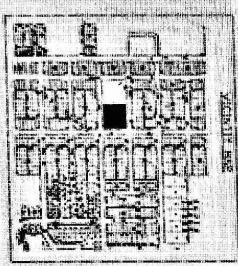
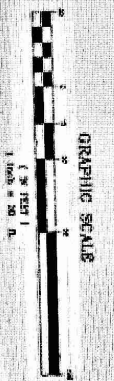
LETTER RESERVATION

THE CITY OF SIOUXLAND, NEBRASKA, HAS REVIEWED THE PLANS AND SPECIFICATIONS FOR THE FLORENCE ADDITION AND HAS APPROVED THE SAME FOR THE CITY OF SIOUXLAND.

STANDARD - 1/2" AND 3/4" FOR THE CITY OF SIOUXLAND, NEBRASKA.

DESIGNER - [Name]

DATE - [Date]



APPROVED FOR THE CITY OF SIOUXLAND

FILED BY: [Signature]

DATE: [Date]

LEGEND

○ - 1/2" DIA. FOR 1/2" DIA. PIPES

○ - 3/4" DIA. FOR 3/4" DIA. PIPES

○ - 1" DIA. FOR 1" DIA. PIPES

○ - 1 1/2" DIA. FOR 1 1/2" DIA. PIPES

○ - 2" DIA. FOR 2" DIA. PIPES

ZONING

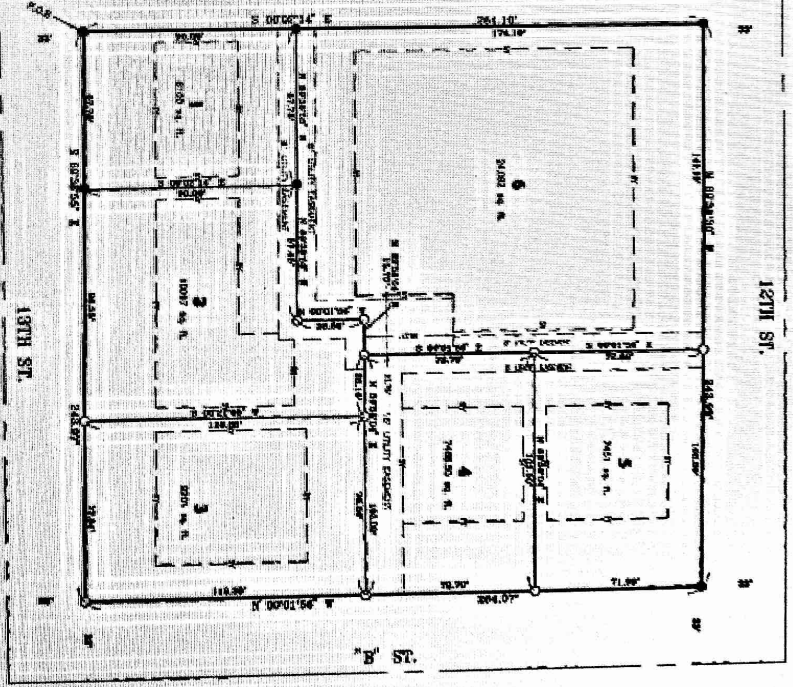
RESIDENTIAL - R-1

FINAL PLAN

FLORENCE ADDITION

AN ADDITION TO THE CITY OF SOUTH SIOUX CITY, NEBRASKA.

THE EAST 246 FEET OF JOY PARK IN BLOCK 44, JOY PLACE ADDITION TO SOUTH SIOUX CITY AS SURVEYED, PLATTED, AND RECORDED IN DAWSON COUNTY, NEBRASKA.



SIouxland ENGINEERING ASSOCIATES P.C.

204 W. 21st St. SIOUXLAND, NEBRASKA 68078

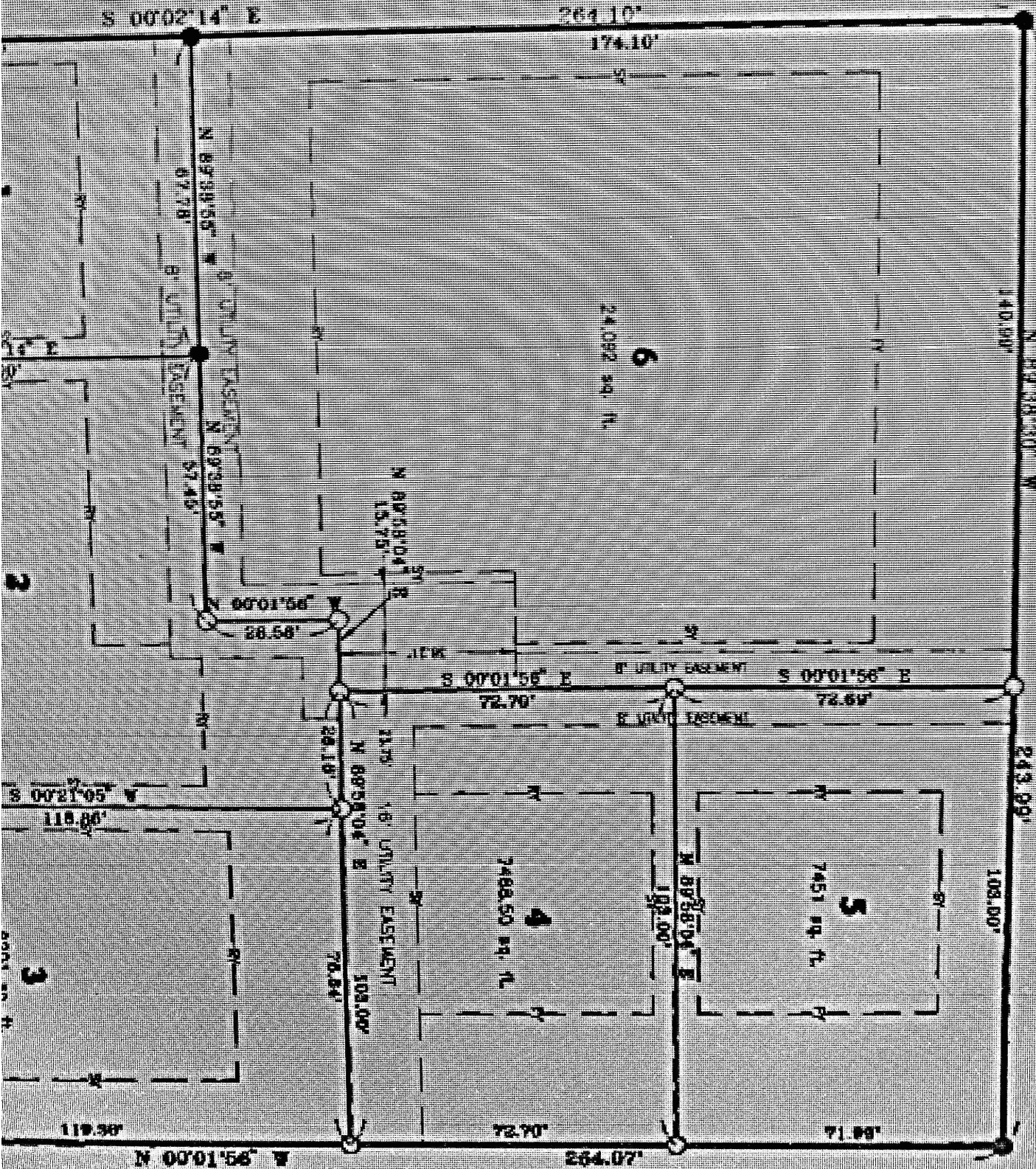
402-441-2121

FLORENCE ADDITION

SIouxland ENGINEERING ASSOCIATES P.C.

DATE	05/12/07
PROJECT	FLORENCE
DESIGNER	LAS
DATE	05-10-07

12TH ST.



33'

32'

33'

12TH ST.



N 89°38'30" W

140.00'

50'

261.10'

176.10'

6

24,092 sq. ft.

S 00°01'55" E

73.00'

8' UTILITY EASEMENT

8' UTILITY EASEMENT

S 00°01'55" E

72.70'

N 89°58'04" W
13.75'

21.75'

N 8

28.18'

S 00°02'14" E

N 89°39'55" W

47.78'

8' UTILITY EASEMENT

N 89°39'55" E

57.45'

8' UTILITY EASEMENT

N 00°01'55" E

28.58'

29.00'

6,100 sq. ft.

202.11'

80.00'

8

10,087 sq. ft.