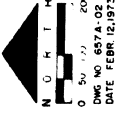
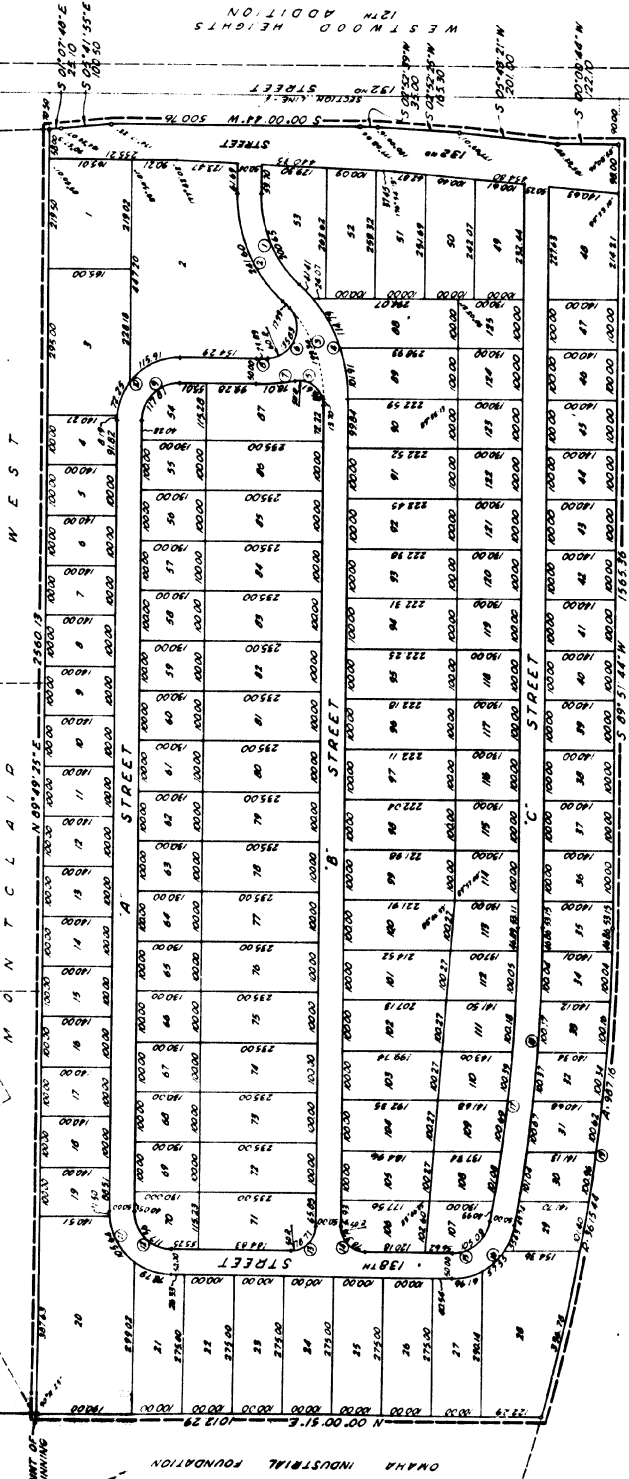
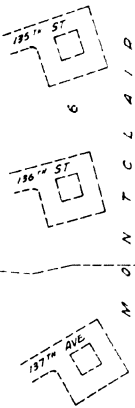


SOUTHWEST PARK

A SUBDIVISION LOCATED IN PART IN THE SOUTHWEST QUARTER OF SECTION 36, TOWNSHIP 15 NORTH, RANGE 11 WEST OF THE 6TH P.M., DUBLUAS COUNTY, IOWA.



DWG NO. 6574-A-02
DATE FEB. 12, 1973



UNION PACIFIC RAILROAD R.O.W.

OMAHA INDUSTRIAL FOUNDATION

| LOT | AREA | VALUE | REMARKS |
|-----|-----------|--------|---------|
| 1 | 31.54 | 285.36 | |
| 2 | 46.56 34' | 423.57 | |
| 3 | 46.56 34' | 423.57 | |
| 4 | 46.56 34' | 423.57 | |
| 5 | 46.56 34' | 423.57 | |
| 6 | 46.56 34' | 423.57 | |
| 7 | 46.56 34' | 423.57 | |
| 8 | 46.56 34' | 423.57 | |
| 9 | 46.56 34' | 423.57 | |
| 10 | 46.56 34' | 423.57 | |
| 11 | 46.56 34' | 423.57 | |
| 12 | 46.56 34' | 423.57 | |
| 13 | 46.56 34' | 423.57 | |
| 14 | 46.56 34' | 423.57 | |
| 15 | 46.56 34' | 423.57 | |
| 16 | 46.56 34' | 423.57 | |
| 17 | 46.56 34' | 423.57 | |
| 18 | 46.56 34' | 423.57 | |
| 19 | 46.56 34' | 423.57 | |
| 20 | 46.56 34' | 423.57 | |
| 21 | 46.56 34' | 423.57 | |
| 22 | 46.56 34' | 423.57 | |
| 23 | 46.56 34' | 423.57 | |
| 24 | 46.56 34' | 423.57 | |
| 25 | 46.56 34' | 423.57 | |
| 26 | 46.56 34' | 423.57 | |
| 27 | 46.56 34' | 423.57 | |
| 28 | 46.56 34' | 423.57 | |
| 29 | 46.56 34' | 423.57 | |
| 30 | 46.56 34' | 423.57 | |
| 31 | 46.56 34' | 423.57 | |
| 32 | 46.56 34' | 423.57 | |
| 33 | 46.56 34' | 423.57 | |
| 34 | 46.56 34' | 423.57 | |
| 35 | 46.56 34' | 423.57 | |
| 36 | 46.56 34' | 423.57 | |
| 37 | 46.56 34' | 423.57 | |
| 38 | 46.56 34' | 423.57 | |
| 39 | 46.56 34' | 423.57 | |
| 40 | 46.56 34' | 423.57 | |

DEFINITIONS:
SECTION 36, TOWNSHIP 15 NORTH, RANGE 11 WEST OF THE 6TH P.M., DUBLUAS COUNTY, IOWA.
DATE FEB. 12, 1973

RESOLUTION:
BEFORE ME, the undersigned authority, on this 12th day of February, 1973, personally appeared before me, the undersigned authority, the following persons, whose names are subscribed to the foregoing plat, and acknowledged to me that they executed the same for the purposes and consideration therein expressed.

[Signatures]
STATE OF IOWA
COUNTY OF DUBLUAS

WITNESSES: ME AND MY OFFICIAL SEAL.
STATE OF IOWA
COUNTY OF DUBLUAS

WITNESSES: ME AND MY OFFICIAL SEAL.
STATE OF IOWA
COUNTY OF DUBLUAS

WITNESSES: ME AND MY OFFICIAL SEAL.
STATE OF IOWA
COUNTY OF DUBLUAS

WITNESSES: ME AND MY OFFICIAL SEAL.
STATE OF IOWA
COUNTY OF DUBLUAS

WITNESSES: ME AND MY OFFICIAL SEAL.
STATE OF IOWA
COUNTY OF DUBLUAS

WITNESSES: ME AND MY OFFICIAL SEAL.
STATE OF IOWA
COUNTY OF DUBLUAS

WITNESSES: ME AND MY OFFICIAL SEAL.
STATE OF IOWA
COUNTY OF DUBLUAS

WITNESSES: ME AND MY OFFICIAL SEAL.
STATE OF IOWA
COUNTY OF DUBLUAS

STATE OF IOWA
COUNTY OF DUBLUAS

STATE OF IOWA
COUNTY OF DUBLUAS

STATE OF IOWA
COUNTY OF DUBLUAS

STATE OF IOWA
COUNTY OF DUBLUAS

STATE OF IOWA
COUNTY OF DUBLUAS

STATE OF IOWA
COUNTY OF DUBLUAS

STATE OF IOWA
COUNTY OF DUBLUAS

STATE OF IOWA
COUNTY OF DUBLUAS

STATE OF IOWA
COUNTY OF DUBLUAS

STATE OF IOWA
COUNTY OF DUBLUAS

STATE OF IOWA
COUNTY OF DUBLUAS

STATE OF IOWA
COUNTY OF DUBLUAS

STATE OF IOWA
COUNTY OF DUBLUAS

STATE OF IOWA
COUNTY OF DUBLUAS

STATE OF IOWA
COUNTY OF DUBLUAS

STATE OF IOWA
COUNTY OF DUBLUAS

STATE OF IOWA
COUNTY OF DUBLUAS

STATE OF IOWA
COUNTY OF DUBLUAS

STATE OF IOWA
COUNTY OF DUBLUAS

STATE OF IOWA
COUNTY OF DUBLUAS

STATE OF IOWA
COUNTY OF DUBLUAS