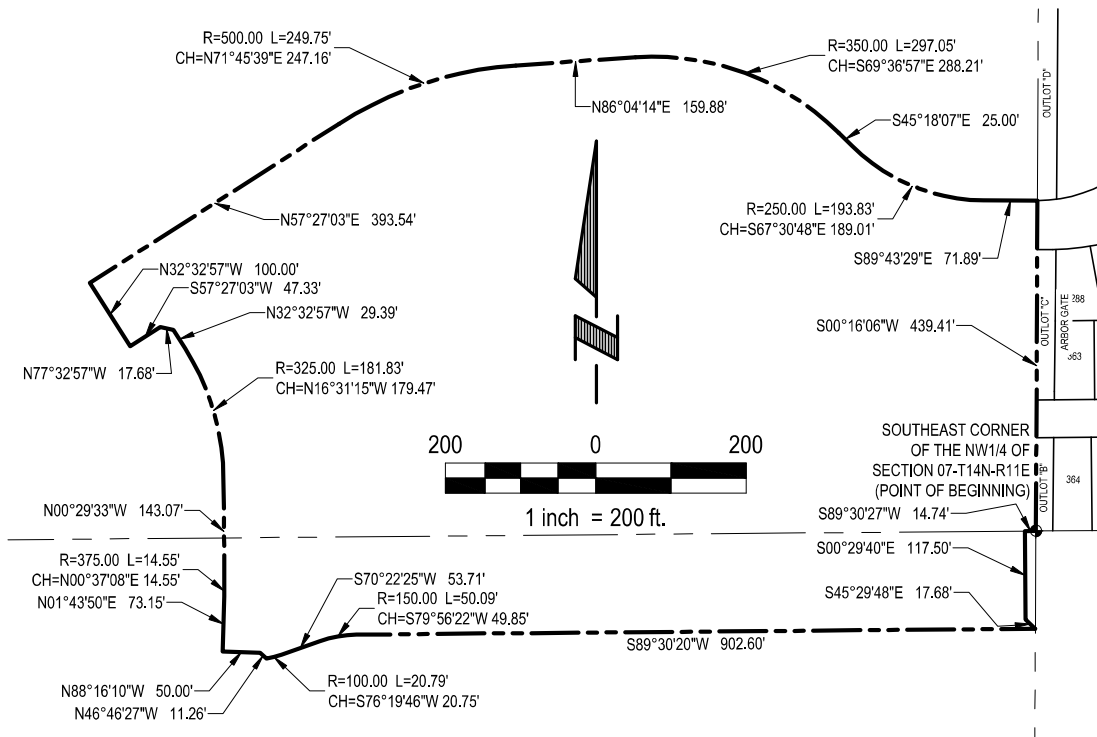


EXHIBIT "A"



LEGAL DESCRIPTION

A TRACT OF LAND LOCATED IN PART OF THE NE1/4 OF THE SW1/4 AND PART OF THE SE1/4 OF THE NW1/4, ALL LOCATED IN SECTION 07, TOWNSHIP 14 NORTH, RANGE 11 EAST OF THE 6TH P.M., DOUGLAS COUNTY, NEBRASKA. MORE PARTICULARLY DESCRIBED AS FOLLOWS:

BEGINNING AT THE NORTHEAST CORNER OF SAID SW1/4 OF SECTION 07, SAID POINT ALSO BEING THE SOUTHWEST CORNER OF SAID NW1/4 OF SECTION 07, SAID POINT ALSO BEING THE SOUTHWEST CORNER OF OUTLOT "B", ARBOR GATE, A SUBDIVISION LOCATED IN PART OF THE NE1/4 OF SAID SECTION 07; THENCE S89°30'27"W (ASSUMED BEARING) ALONG THE NORTH LINE OF SAID SW1/4 OF SECTION 07, SAID LINE ALSO BEING THE SOUTH LINE OF SAID NW1/4 OF SECTION 07, A DISTANCE OF 14.74 FEET; THENCE S00°29'40"E, A DISTANCE OF 117.50 FEET; THENCE S45°29'48"E, A DISTANCE OF 17.68 FEET; THENCE S89°30'20"W, A DISTANCE OF 902.60 FEET; THENCE SOUTHWESTERLY ON A CURVE TO THE LEFT WITH A RADIUS OF 150.00 FEET, A DISTANCE OF 50.09 FEET, SAID CURVE HAVING A LONG CHORD WHICH BEARS S79°56'22"W, A DISTANCE OF 49.85 FEET; THENCE S70°22'25"W, A DISTANCE OF 53.71 FEET; THENCE SOUTHWESTERLY ON A CURVE TO THE RIGHT WITH A RADIUS OF 100.00 FEET, A DISTANCE OF 20.79 FEET, SAID CURVE HAVING A LONG CHORD WHICH BEARS S76°19'46"W, A DISTANCE OF 20.75 FEET; THENCE N46°46'27"W, A DISTANCE OF 11.26 FEET; THENCE N88°16'10"W, A DISTANCE OF 50.00 FEET; THENCE N01°43'50"E, A DISTANCE OF 73.15 FEET; THENCE NORTHEASTERLY ON A CURVE TO THE LEFT WITH A RADIUS OF 375.00 FEET, A DISTANCE OF 14.55 FEET, SAID CURVE HAVING A LONG CHORD WHICH BEARS N00°37'08"E, A DISTANCE OF 14.55 FEET; THENCE N00°29'33"W, A DISTANCE OF 143.07 FEET; THENCE NORTHWESTERLY ON A CURVE TO THE LEFT WITH A RADIUS OF 325.00 FEET, A DISTANCE OF 181.83 FEET, SAID CURVE HAVING A LONG CHORD WHICH BEARS N16°31'15"W, A DISTANCE OF 179.47 FEET; THENCE N32°32'57"W, A DISTANCE OF 29.39 FEET; THENCE N77°32'57"W, A DISTANCE OF 17.68 FEET; THENCE S57°27'03"W, A DISTANCE OF 47.33 FEET; THENCE N32°32'57"W, A DISTANCE OF 100.00 FEET; THENCE N57°27'03"E, A DISTANCE OF 393.54 FEET; THENCE NORTHEASTERLY ON A CURVE TO THE RIGHT WITH A RADIUS OF 500.00 FEET, A DISTANCE OF 249.75 FEET, SAID CURVE HAVING A LONG CHORD WHICH BEARS N71°45'39"E, A DISTANCE OF 247.16 FEET; THENCE N86°04'14"E, A DISTANCE OF 159.88 FEET; THENCE SOUTHEASTERLY ON A CURVE TO THE RIGHT WITH A RADIUS OF 350.00 FEET, A DISTANCE OF 297.05 FEET, SAID CURVE HAVING A LONG CHORD WHICH BEARS S69°36'57"E, A DISTANCE OF 288.21 FEET; THENCE S45°18'07"E, A DISTANCE OF 25.00 FEET; THENCE SOUTHEASTERLY ON A CURVE TO THE LEFT WITH A RADIUS OF 250.00 FEET, A DISTANCE OF 193.83 FEET, SAID CURVE HAVING A LONG CHORD WHICH BEARS S67°30'48"E, A DISTANCE OF 189.01 FEET; THENCE S89°43'29"E, A DISTANCE OF 71.89 FEET TO THE SOUTHWEST CORNER OF OUTLOT "D", SAID ARBOR GATE, SAID POINT ALSO BEING ON THE EAST LINE OF SAID NW1/4 OF SECTION 07, SAID POINT ALSO BEING ON THE NORTHERLY RIGHT-OF-WAY LINE OF SOUTH H.W.S. CLEVELAND BOULEVARD; THENCE S00°16'06"W ALONG SAID EAST LINE OF THE NW1/4 OF SECTION 07, SAID LINE ALSO BEING THE EAST LINE OF SAID OUTLOT "B", ARBOR GATE, SAID LINE ALSO BEING THE WEST LINE OF OUTLOT "C", SAID ARBOR GATE, A DISTANCE OF 439.41 FEET TO THE POINT OF BEGINNING.

SAID TRACT OF LAND CONTAINS 769,369 SQUARE FEET OR 17.662 ACRES, MORE OR LESS.

 E & A CONSULTING GROUP, INC. <small>Engineering Answers</small>	E & A CONSULTING GROUP, INC. Engineering • Planning • Environmental & Field Services <small>10909 Mill Valley Road, Suite 100 • Omaha, NE 68154 Phone: 402.895.4700 • Fax: 402.895.3599</small>	PLAT LEGAL PART OF THE NW1/4 AND PART OF THE SW1/4 OF SECTION 07-T14N-R11E <small>DOUGLAS COUNTY, NEBRASKA</small>
Drawn by: RLS Chkd by: _____ Date: 10/03/2018 Job No.: 2018.178.002		