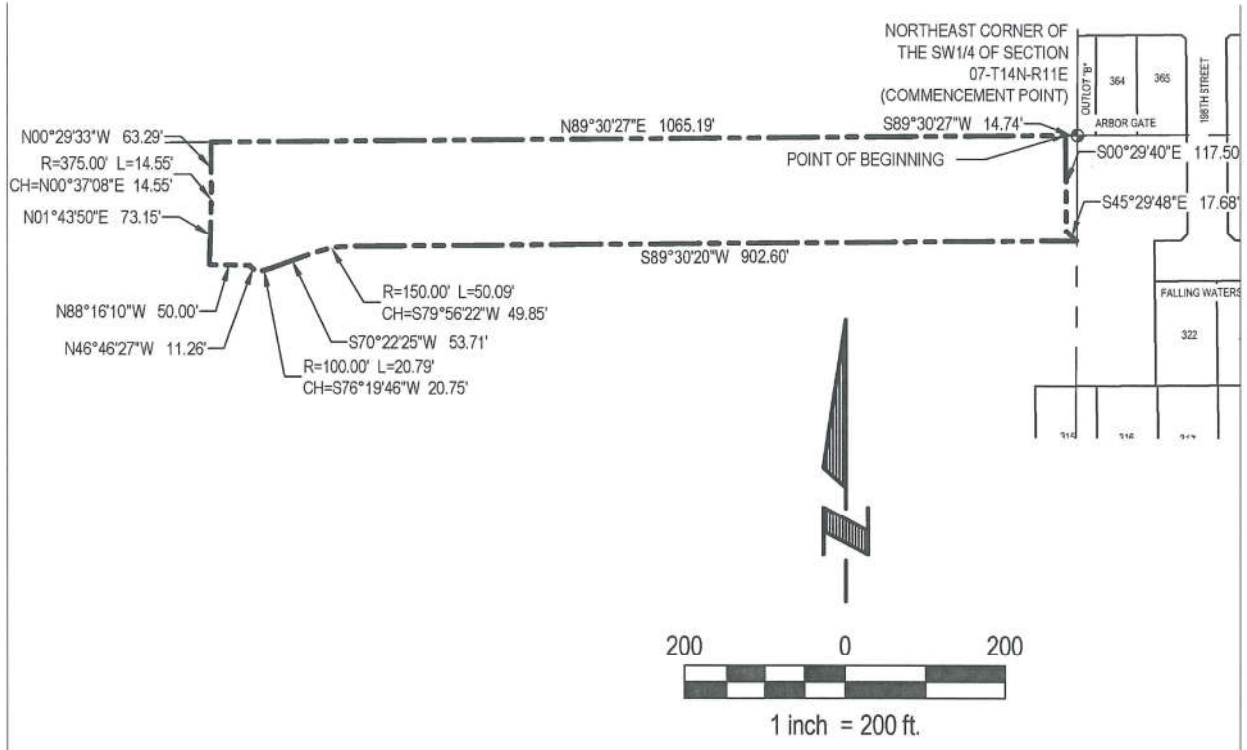


**Exhibit "A"**

**MAP AND LEGAL DESCRIPTION  
(Page 1 of 2)  
MAP**



**Exhibit "A"**

**MAP AND LEGAL DESCRIPTION**

**(Page 2 of 2)**

**LEGAL DESCRIPTION**

A TRACT OF LAND LOCATED IN PART OF THE NE1/4 OF THE SW1/4 OF SECTION 07, TOWNSHIP 14 NORTH, RANGE 11 EAST OF THE 6TH P.M., DOUGLAS COUNTY, NEBRASKA. MORE PARTICULARLY DESCRIBED AS FOLLOWS:

COMMENCING AT THE NORTHEAST CORNER OF SAID SW1/4 OF SECTION 07, SAID POINT ALSO BEING THE SOUTHWEST CORNER OF OUTLOT "B", ARBOR GATE, A SUBDIVISION LOCATED IN PART OF THE NE1/4 OF SAID SECTION 07; THENCE S89°30'27"W (ASSUMED BEARING) ALONG THE NORTH LINE OF SAID SW1/4 OF SECTION 07, A DISTANCE OF 14.74 FEET TO THE POINT OF BEGINNING; THENCE S00°29'40"E, A DISTANCE OF 117.50 FEET; THENCE S45°29'48"E, A DISTANCE OF 17.68 FEET; THENCE S89°30'20"W, A DISTANCE OF 902.60 FEET; THENCE SOUTHWESTERLY ON A CURVE TO THE LEFT WITH A RADIUS OF 150.00 FEET, A DISTANCE OF 50.09 FEET, SAID CURVE HAVING A LONG CHORD WHICH BEARS S79°56'22"W, A DISTANCE OF 49.85 FEET; THENCE S70°22'25"W, A DISTANCE OF 53.71 FEET; THENCE SOUTHWESTERLY ON A CURVE TO THE RIGHT WITH A RADIUS OF 100.00 FEET, A DISTANCE OF 20.79 FEET, SAID CURVE HAVING A LONG CHORD WHICH BEARS S76°19'46"W, A DISTANCE OF 20.75 FEET; THENCE N46°46'27"W, A DISTANCE OF 11.26 FEET; THENCE N88°16'10"W, A DISTANCE OF 50.00 FEET; THENCE N01°43'50"E, A DISTANCE OF 73.15 FEET; THENCE NORTHEASTERLY ON A CURVE TO THE LEFT WITH A RADIUS OF 375.00 FEET, A DISTANCE OF 14.55 FEET, SAID CURVE HAVING A LONG CHORD WHICH BEARS N00°37'08"E, A DISTANCE OF 14.55 FEET; THENCE N00°29'33"W, A DISTANCE OF 63.29 FEET TO A POINT ON SAID NORTH LINE OF THE SW1/4 OF SECTION 07; THENCE N89°30'27"E ALONG SAID NORTH LINE OF THE SW1/4 OF SECTION 07, A DISTANCE OF 1,065.19 FEET TO THE POINT OF BEGINNING.

SAID TRACT OF LAND CONTAINS 141,523 SQUARE FEET OR 3.249 ACRES, MORE OR LESS.

# Exhibit "A"

## MAP

