

MUTUAL OF OMAHA CAMPUS LOTS 1 THRU 17, INCLUSIVE, BEING A REPLAT OF THE FOLLOWING:

LOT 1, MUTUAL OF OMAHA CAMPUS, BEING A REPLAT OF LOT 10, UNITED BENEFIT REPLAT NO. 2, A SUBDIVISION IN DOUGLAS COUNTY, NEBRASKA, EXCEPT THAT PART DEDICATED AS DOODGE STREET RIGHT-OF-WAY.
 LOT 2, MUTUAL OF OMAHA CAMPUS, BEING A REPLAT OF LOTS 5, 6, 7, 8 AND 9, UNITED BENEFIT REPLAT NO. 2, A SUBDIVISION IN DOUGLAS COUNTY, NEBRASKA, TOGETHER WITH ALL OF THE VACATED ALLEY ADJOINING SAID LOTS 6 AND 8 ON THE SOUTH, TOGETHER WITH ALL OF VACATED 35th STREET LYING BETWEEN THE SOUTH LINE OF DOODGE STREET AND A LINE 190.00 FEET NORTH OF THE NORTH LINE OF FARNAM STREET, EXCEPT THAT PART OF SAID LOTS 7 AND 9 DEDICATED AS 35th AVENUE RIGHT-OF-WAY, TOGETHER WITH LOTS 7 AND 8, WEST END, A SUBDIVISION IN SAID DOUGLAS COUNTY, TOGETHER WITH THE WEST 1/2 OF THE VACATED ALLEY ADJACENT THEREON TO THE EAST.
 LOT 3, MUTUAL OF OMAHA CAMPUS, BEING A REPLAT OF LOT 1, UNITED BENEFIT REPLAT, A SUBDIVISION IN DOUGLAS COUNTY, NEBRASKA TOGETHER WITH LOT 1, UNITED BENEFIT REPLAT NO. 2, A SUBDIVISION IN SAID DOUGLAS COUNTY.
 LOT 4, MUTUAL OF OMAHA CAMPUS, BEING A REPLAT OF LOTS 2 AND 3, UNITED BENEFIT REPLAT NO. 2, A SUBDIVISION IN DOUGLAS COUNTY, NEBRASKA.
 LOT 5, MUTUAL OF OMAHA CAMPUS, BEING A REPLAT OF LOT 4, UNITED BENEFIT REPLAT NO. 2, A SUBDIVISION IN DOUGLAS COUNTY, NEBRASKA.
 LOT 6, MUTUAL OF OMAHA CAMPUS, BEING A REPLAT OF LOTS 1 THRU 6, INCLUSIVE, AND THE WEST 35.00 FEET OF LOT 9 AND LOTS 10 THRU 13, INCLUSIVE, ALL IN BLOCK 19, WEST END, A SUBDIVISION IN DOUGLAS COUNTY, NEBRASKA, TOGETHER WITH LOTS 1 THRU 15, INCLUSIVE, REED'S FIFTH ADDITION, A SUBDIVISION IN SAID DOUGLAS COUNTY, EXCEPT THE EAST 7.50 FEET OF SAID LOT 1 DEDICATED AS 33rd STREET RIGHT-OF-WAY, TOGETHER WITH THE WEST 87.50 FEET OF LOT 14 IN THE SW 1/4 OF THE NW 1/4 OF SECTION 21, T15N, R13E OF THE 6th P.M., SAID DOUGLAS COUNTY, NEBRASKA.
 LOTS 7, 8, AND 9, MUTUAL OF OMAHA CAMPUS, BEING A REPLAT OF LOTS 1 THRU 6, INCLUSIVE, BLOCK 20, WEST END, A SUBDIVISION IN DOUGLAS COUNTY, NEBRASKA, TOGETHER WITH LOT 13, REDICK'S GROVE, A SUBDIVISION IN SAID DOUGLAS COUNTY, EXCEPT THE EAST 3.50 FEET THEREOF, TOGETHER WITH (NEW) SUBLT 4 AND SUBLOTS 1 AND 5 OF TAX LOT 12 AND THE EAST 110.00 FEET OF TAX LOT 14, ALL IN THE SE 1/4 OF THE NW 1/4 OF SECTION 21, T15N, R13E OF THE 6th P.M., SAID DOUGLAS COUNTY.
 LOT 10, MUTUAL OF OMAHA CAMPUS, BEING A REPLAT OF THE NORTH 35.00 FEET OF LOT 16 AND ALL OF LOTS 17, 18 AND 19, AND THE SOUTH 17.00 FEET OF LOT 20, BLOCK 3, SUMMIT PLACE, A SUBDIVISION IN DOUGLAS COUNTY, NEBRASKA.
 LOT 11, MUTUAL OF OMAHA CAMPUS, BEING A REPLAT OF THE SOUTH 45.00 FEET OF LOT 7, AND ALL OF LOTS 8 THRU 12, INCLUSIVE, BLOCK 3, SUMMIT PLACE, A SUBDIVISION IN DOUGLAS COUNTY, NEBRASKA.
 LOT 12, MUTUAL OF OMAHA CAMPUS, BEING A REPLAT OF LOTS 1 THRU 6, INCLUSIVE, AND THE NORTH 3.00 FEET OF LOT 7, BLOCK 3, SUMMIT PLACE, A SUBDIVISION IN DOUGLAS COUNTY, NEBRASKA, TOGETHER WITH LOT 1, BLOCK 6, WEST END, A SUBDIVISION IN SAID DOUGLAS COUNTY, EXCEPT THE NORTH 3.00 FEET THEREOF DEDICATED AS DOODGE STREET RIGHT-OF-WAY.
 LOT 13, MUTUAL OF OMAHA CAMPUS, BEING A REPLAT OF LOT 2, BLOCK 6, WEST END, A SUBDIVISION IN DOUGLAS COUNTY, NEBRASKA, EXCEPT THE NORTH 3.00 FEET THEREOF DEDICATED AS DOODGE STREET RIGHT-OF-WAY, TOGETHER WITH THE NORTH 31.00 FEET OF LOT 20, AND ALL OF LOTS 21, 22, 23 AND 24, BLOCK 3, SUMMIT PLACE, A SUBDIVISION IN SAID DOUGLAS COUNTY.
 LOT 14, MUTUAL OF OMAHA CAMPUS, BEING A REPLAT OF THE NORTH 1/2 OF LOT 1, BLOCK 4, SUMMIT PLACE, A SUBDIVISION IN DOUGLAS COUNTY, NEBRASKA, TOGETHER WITH LOT 1, BLOCK 7, WEST END, A SUBDIVISION IN SAID DOUGLAS COUNTY, EXCEPT THE NORTH 3.00 FEET THEREOF DEDICATED AS DOODGE STREET RIGHT-OF-WAY.
 LOT 15, MUTUAL OF OMAHA CAMPUS, BEING A REPLAT OF THE NORTH 127.00 FEET OF LOTS 6, 7 AND 8, BLOCK 8, WEST END, A SUBDIVISION IN DOUGLAS COUNTY, NEBRASKA.
 LOT 16, MUTUAL OF OMAHA CAMPUS, BEING A REPLAT OF LOTS 8, 9, 10, AND 11, BLOCK 9, WEST END, A SUBDIVISION IN DOUGLAS COUNTY, NEBRASKA, EXCEPT THE SOUTH 3.00 FEET OF SAID LOTS 9, 10 AND 11, DEDICATED AS DOODGE STREET RIGHT-OF-WAY, TOGETHER WITH THE EAST 1/2 OF THE VACATED ALLEY ADJOINING SAID LOT 8 ON THE WEST AND ALL OF THE VACATED ALLEY ADJOINING SAID LOTS 9, 10 AND 11 ON THE NORTH.
 LOT 17, MUTUAL OF OMAHA CAMPUS, BEING A REPLAT OF LOT 7 AND THE SOUTH 23.00 FEET OF LOT 6, BLOCK 4, REPLAT OF SUMMIT RESERVE OF SUMMIT PLACE, A SUBDIVISION IN DOUGLAS COUNTY, NEBRASKA, TOGETHER WITH LOTS 8 AND 9, BLOCK 4, SUMMIT PLACE, A SUBDIVISION IN SAID DOUGLAS COUNTY.



SURVEYOR'S CERTIFICATE
 I HEREBY CERTIFY THAT I HAVE SURVEYED THE PROPERTY DESCRIBED HEREON AND THAT PERMANENT MARKERS HAVE BEEN FOUND OR SET AT ALL CORNERS OF THE LOTS BEING PLATTED.

OCTOBER 13, 2001
 DATE

JAMES D. WARNER
 NEBRASKA RLS 306

OWNERS CERTIFICATION
 KNOW ALL PERSONS BY THESE PRESENTS: THAT WE, UNITED OF OMAHA LIFE INSURANCE COMPANY, A NEBRASKA CORPORATION, AND MUTUAL OF OMAHA INSURANCE COMPANY, A NEBRASKA CORPORATION, BEING THE UNDERSCRIBED OWNERS OF THE PROPERTY DESCRIBED HEREON AND EMBRACED WITHIN THIS PLAT, HAVE CAUSED SAID LAND TO BE SUBDIVIDED INTO LOTS AS SHOWN ON THIS PLAT.

UNITED OF OMAHA LIFE INSURANCE COMPANY, A NEBRASKA CORPORATION.
 BY: *M. Jane Huertner*
 M. JANE HUERTNER, EXECUTIVE VICE PRESIDENT and CORPORATE SECRETARY

MUTUAL OF OMAHA INSURANCE COMPANY, A NEBRASKA CORPORATION.
 BY: *M. Jane Huertner*
 M. JANE HUERTNER, EXECUTIVE VICE PRESIDENT and CORPORATE SECRETARY

ACKNOWLEDGMENT OF NOTARY
 STATE OF NEBRASKA)
 COUNTY OF DOUGLAS)
 I, ROBERT C. DARLEY, Notary Public for Nebraska, do hereby certify that the foregoing Owners Certification was acknowledged before me this 13th day of October, 2001, by M. Jane Huertner, Executive Vice President and Corporate Secretary of United of Omaha Life Insurance Company, a Nebraska Corporation on behalf of said Corporation.

ACKNOWLEDGMENT OF NOTARY
 STATE OF NEBRASKA)
 COUNTY OF DOUGLAS)
 I, ROBERT C. DARLEY, Notary Public for Nebraska, do hereby certify that the foregoing Owners Certification was acknowledged before me this 13th day of October, 2001, by M. Jane Huertner, Executive Vice President and Corporate Secretary of Mutual of Omaha Insurance Company, a Nebraska Corporation on behalf of said Corporation.

COUNTY TREASURER'S CERTIFICATION
 THIS IS TO CERTIFY THAT I HAVE RECEIVED ON SPECIAL TAXES DUE OR DELINQUENT AGAINST THE PROPERTY DESCRIBED IN THE LEGAL DESCRIPTION AND AS SHOWN BY THE RECORDS

2-6-01
 DATE

SEAL of Douglas County Treasurer
Richard Parker
 COUNTY TREASURER

APPROVAL OF CITY ENGINEER
 ALL REQUIRED PUBLIC IMPROVEMENTS HAVE BEEN COMPLETED, INSPECTED AND APPROVED BY THE PUBLIC WORKS DEPARTMENT.

2-14-02
 DATE

Jimmy Viregger
 CITY ENGINEER

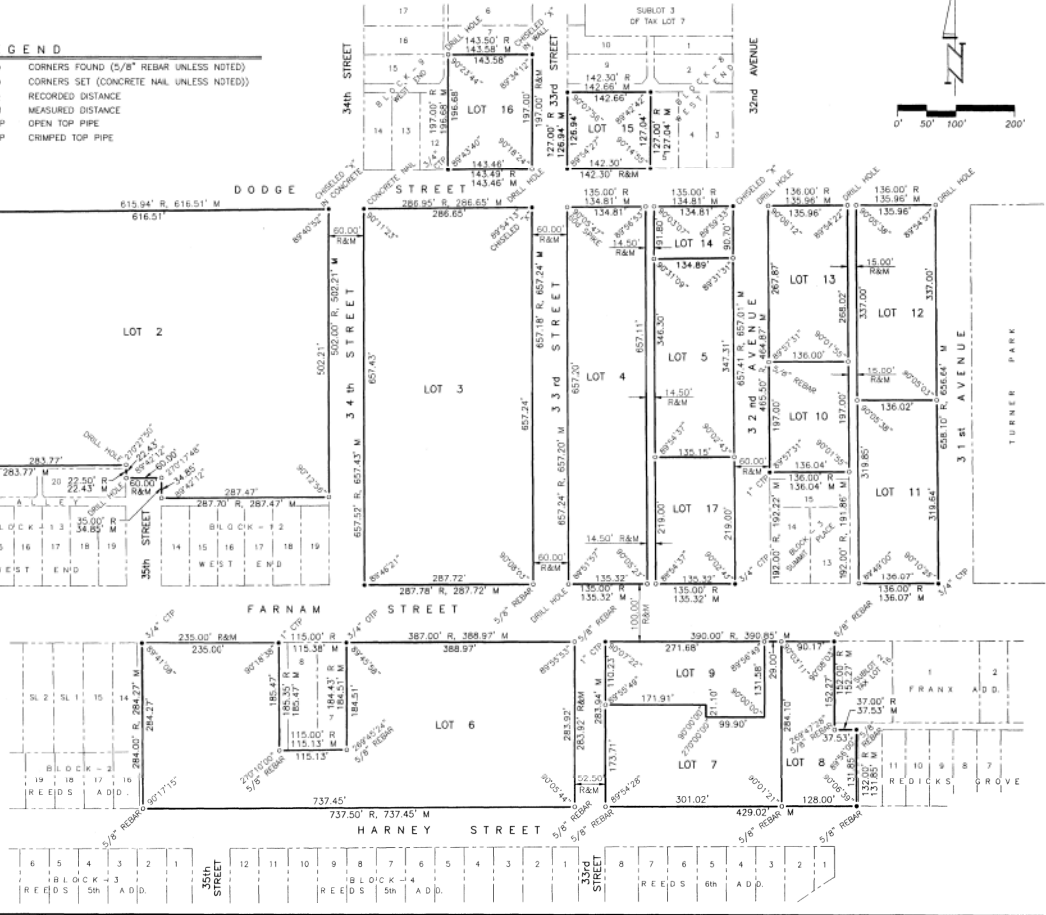
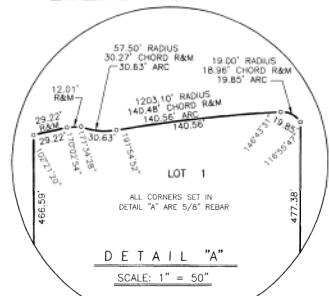
APPROVAL OF PLANNING DIRECTOR
 APPROVED AS A SUBDIVISION OF MUTUAL OF OMAHA CAMPUS IN COMPLIANCE WITH SECTION 53-10(3), OMAHA MUNICIPAL CODE, WITH PLAT REQUIREMENTS WAIVED PER SECTION 7.08, HOME RULE CHARTER OF THE CITY OF OMAHA.

2-14-02
 DATE

[Signature]
 PLANNING DIRECTOR

SCALE: 1" = 100'	DATE: OCT. 13, 2001	DRWING BY: JWR	CHECKED BY: JWR	REVISION:
MUTUAL OF OMAHA CAMPUS				
ADMINISTRATIVE APPROVAL				
MINOR PLAT				
THOMPSON, DRESSEN & DORNER, INC. Consulting Engineers & Land Surveyors 10638 OLD MILLS ROAD OMAHA, NE 68131 (402) 330-8800				
200-275-76				

LEGEND
 ● CORNERS FOUND (5/8" REBAR UNLESS NOTED)
 ○ CORNERS SET (CONCRETE NAIL UNLESS NOTED)
 R RECORDED DISTANCE
 M MEASURED DISTANCE
 OIP OPEN TOP PIPE
 CIP CRIMPED TOP PIPE



RECEIVED
 FEB 22 PM 2:58
 2001
 4051

G15 # 33
 MUTUAL of Omaha Campus