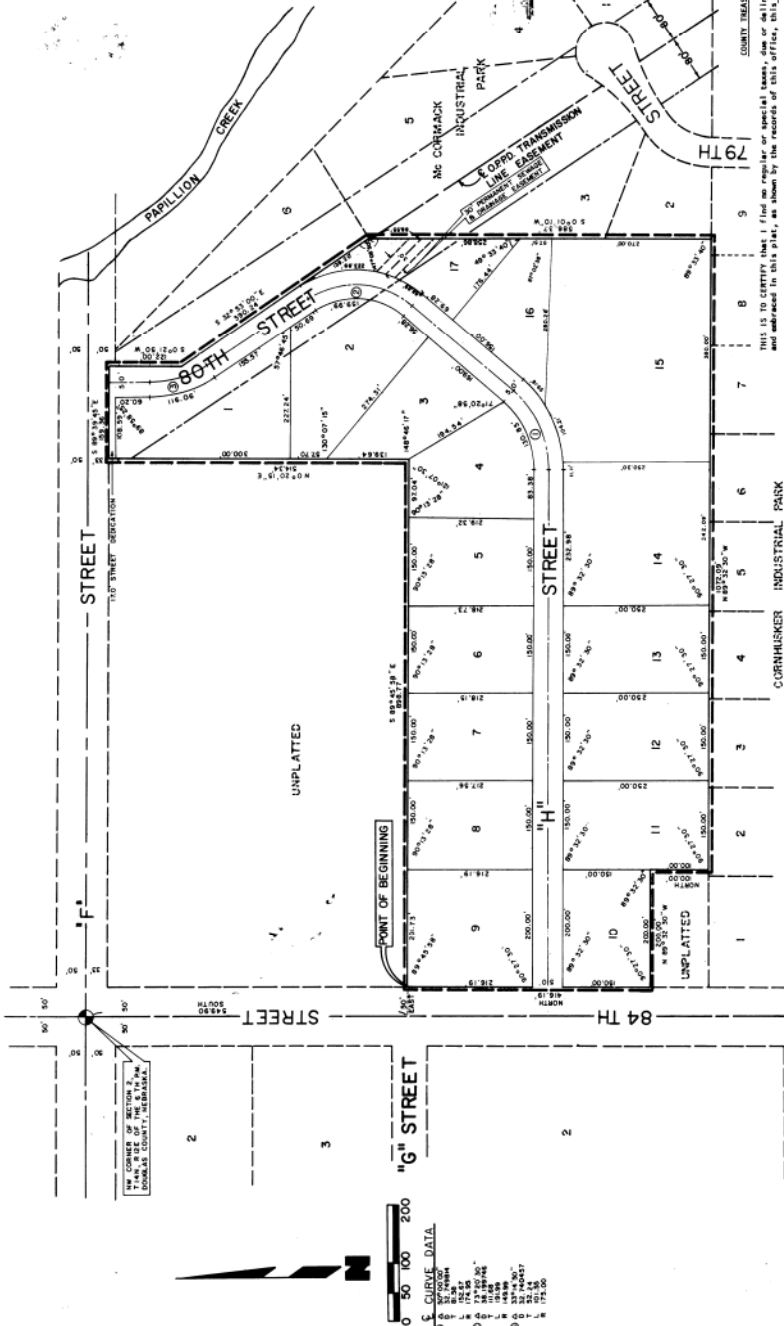


# DONLEE INDUSTRIAL PARK

LOTS 1 THRU 17, INCLUSIVE.  
BEING A PLATTING OF PART OF THE NW 1/4 OF THE  
NW 1/4 OF SECTION 2, T14N, R12E OF THE 6TH P.M.,  
DOUGLAS COUNTY, NEBRASKA



**NOTES**  
UNPLATTED AREAS SHOWN FOR CONVEYANCE ARE  
1. ALL ANGLES ON PLAT ARE 90°  
2. UNLESS OTHERWISE DESIGNATED  
3. ALL LOTS SHALL BE RAISED TO  
AN ELEVATION OF 95.0 PLAT DATUM  
STATE OF NEBRASKA: ON MAY 3, 1978, at 3:05 P.M. at DEPT. OF REVENUE, 11th and F Street, Omaha, Nebraska, I, the undersigned, County Clerk, do hereby certify that the above plat was duly filed for record in the office of the County Clerk of Douglas County, Nebraska, and that the same is a true and correct copy of the original as shown to me by the person who presented it for filing.

APPROVAL OF CITY ENGINEER  
APPROVAL OF CITY PLANNING BOARD  
APPROVAL OF CITY COUNCIL

**SURVEYOR'S CERTIFICATE**  
I HEREBY CERTIFY that I have accurately surveyed and staked, with iron pipe, all corners of lots, streets, and ends of all courses shown on this plat, and that the same are in accordance with the plan of the NW 1/4 of Section 2, T14N, R12E of the 6th P.M., Douglas County, Nebraska, more particularly described in the following: ...

**DEED**  
KNOW ALL MEN BY THESE PRESENTS, That MRS. HELEN M. BOWEN (Trustee) and FRANCIS V. BISHOP (Trustee) for the Partnership of Halford U. Boyer, et al., do hereby certify and approve of the disposition of the property shown on this plat, and do hereby dedicate to the public use, the right of way shown on this plat.

**STATE OF NEBRASKA**  
County of Douglas  
I, the undersigned, County Clerk, do hereby certify that the above plat was duly filed for record in the office of the County Clerk of Douglas County, Nebraska, and that the same is a true and correct copy of the original as shown to me by the person who presented it for filing.

**SIGNATURES AND APPROVALS**  
COUNTY CLERK  
CITY ENGINEER  
CITY PLANNING BOARD  
CITY COUNCIL

THE STATE OF NEBRASKA  
County Clerk  
Douglas County, Nebraska  
I, \_\_\_\_\_  
do hereby certify that the above plat was duly filed for record in the office of the County Clerk of Douglas County, Nebraska, and that the same is a true and correct copy of the original as shown to me by the person who presented it for filing.

APPROVAL OF CITY ENGINEER  
APPROVAL OF CITY PLANNING BOARD  
APPROVAL OF CITY COUNCIL

**DEED**  
KNOW ALL MEN BY THESE PRESENTS, That MRS. HELEN M. BOWEN (Trustee) and FRANCIS V. BISHOP (Trustee) for the Partnership of Halford U. Boyer, et al., do hereby certify and approve of the disposition of the property shown on this plat, and do hereby dedicate to the public use, the right of way shown on this plat.

**STATE OF NEBRASKA**  
County of Douglas  
I, the undersigned, County Clerk, do hereby certify that the above plat was duly filed for record in the office of the County Clerk of Douglas County, Nebraska, and that the same is a true and correct copy of the original as shown to me by the person who presented it for filing.

**FINAL PLAT**

**DONLEE INDUSTRIAL PARK & ASSOCIATES, INC.**

**DONLEE INDUSTRIAL PARK**

**REVISIONS**  
JOB NUMBER  
74-05 21-01  
9-11-74

**SHEET**  
OF