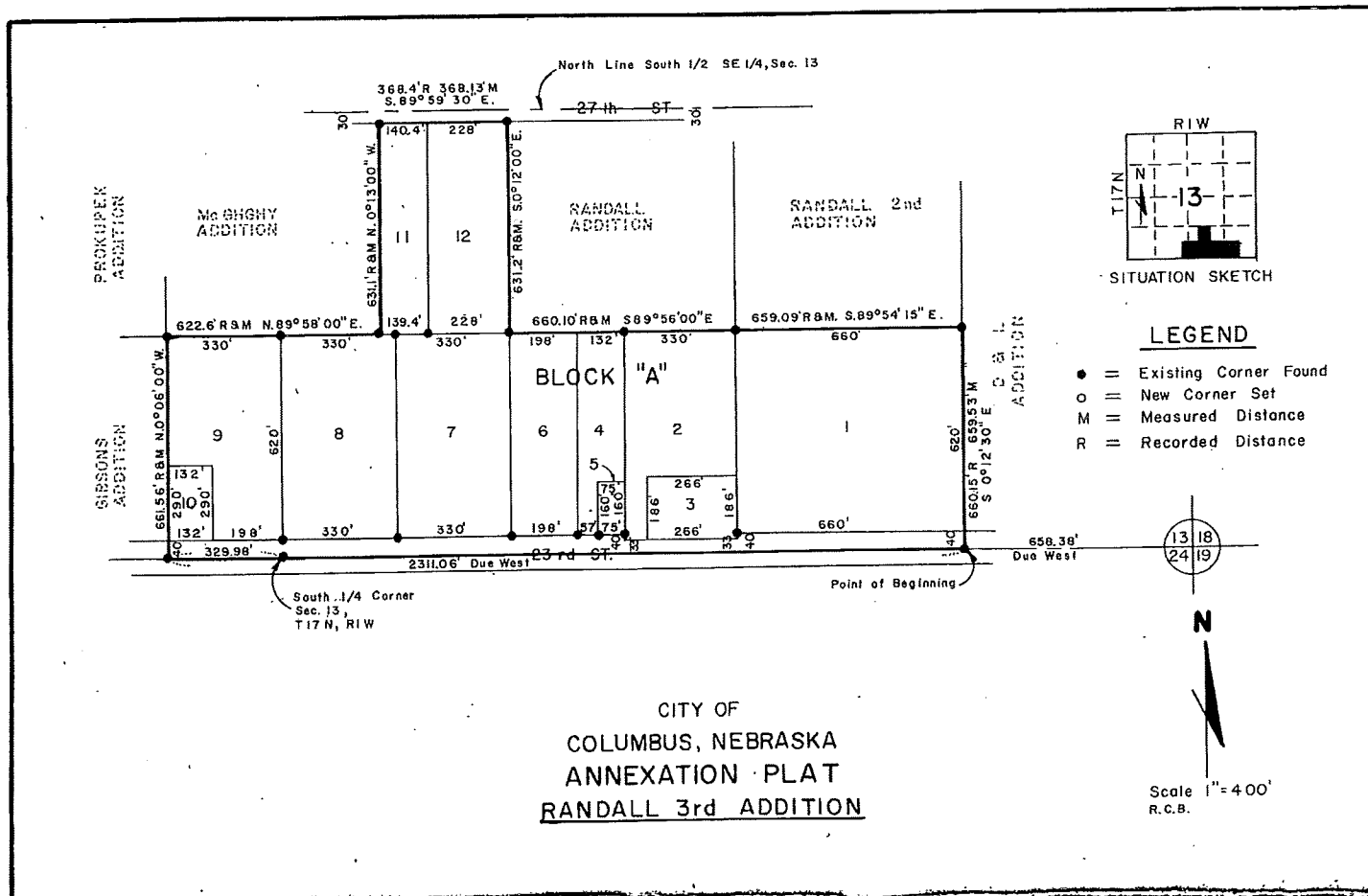


ANNEXATION PLAT RONALD A. RYSTROM, SURVEYOR TO RANDALL 3rd ADDITION



**DESCRIPTION:**

Randall 3rd Addition to the City of Columbus, Nebraska, located in the South 1/2 of Section 13, Township 17 North, Range 1 West of the Sixth P.M., Platte County, Nebraska, more particularly described as follows: Beginning at a point on the south line of, and 658.38 feet due West of, the Southeast Corner of said Section 13, thence continuing due West, along and upon the south line of said Section 13, 2311.06 feet; thence N 0° 06' 00" W, along and upon the east line of Gibson Addition, 661.56 feet; thence N 89° 58' 00" E, along and upon the south line of McGhghy Addition, 622.6 feet; thence N 0° 13' 00" W, along and upon the east line of McGhghy Addition, 631.1 feet; thence S 89° 59' 30" E, along and upon the south ROW line of 27th Street, 368.13 feet; thence S 0° 12' 00" E, along and upon the west line of Randall Addition, 631.2 feet; thence S 89° 56' 00" E, to the Southwest Corner of Randall 2nd Addition, 660.10 feet; thence S 89° 54' 15" E, along and upon the south line of Randall 2nd Addition, 659.09 feet; thence S 0° 12' 30" E, along and upon the west line of D & L Addition, 659.53 feet, to the point of beginning, containing 40.4 acres, more or less.

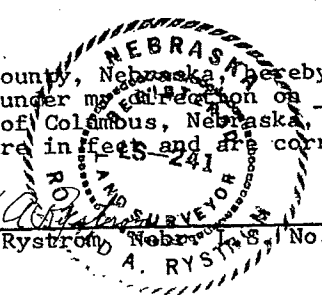
**SURVEYOR'S CERTIFICATE:**

State of Nebraska) ss  
County of Platte )

I, Ronald A. Rystrom, a competent surveyor of Platte County, Nebraska, hereby certify that the above plat is a true and correct survey made under my direction on April 19, 1974, of an area annexed by Ordinance 2257 of the City of Columbus, Nebraska, and that all corners are staked as shown, that all dimensions are in feet and are correct to the best of my knowledge and belief.

Dated this 2nd day of May, 1974.

Ronald A. Rystrom, Nebraska, No. 241



Entered in Numerical Index and Filed for Record in the Register of Deeds Office of said County of Platte, State of Nebraska, this 22nd day of May, 1974, at 2:40 o'clock P.M., Recorded in Book 156 of Deeds, Page 355 thereof. XXXXXXXXXXXX Register of Deeds  
ORIGINAL FILED IN PLAT BOOK 14, PAGE 28.



Fee \$12.75  
Received from-Leo Boettcher  
City Clerk  
City