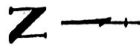
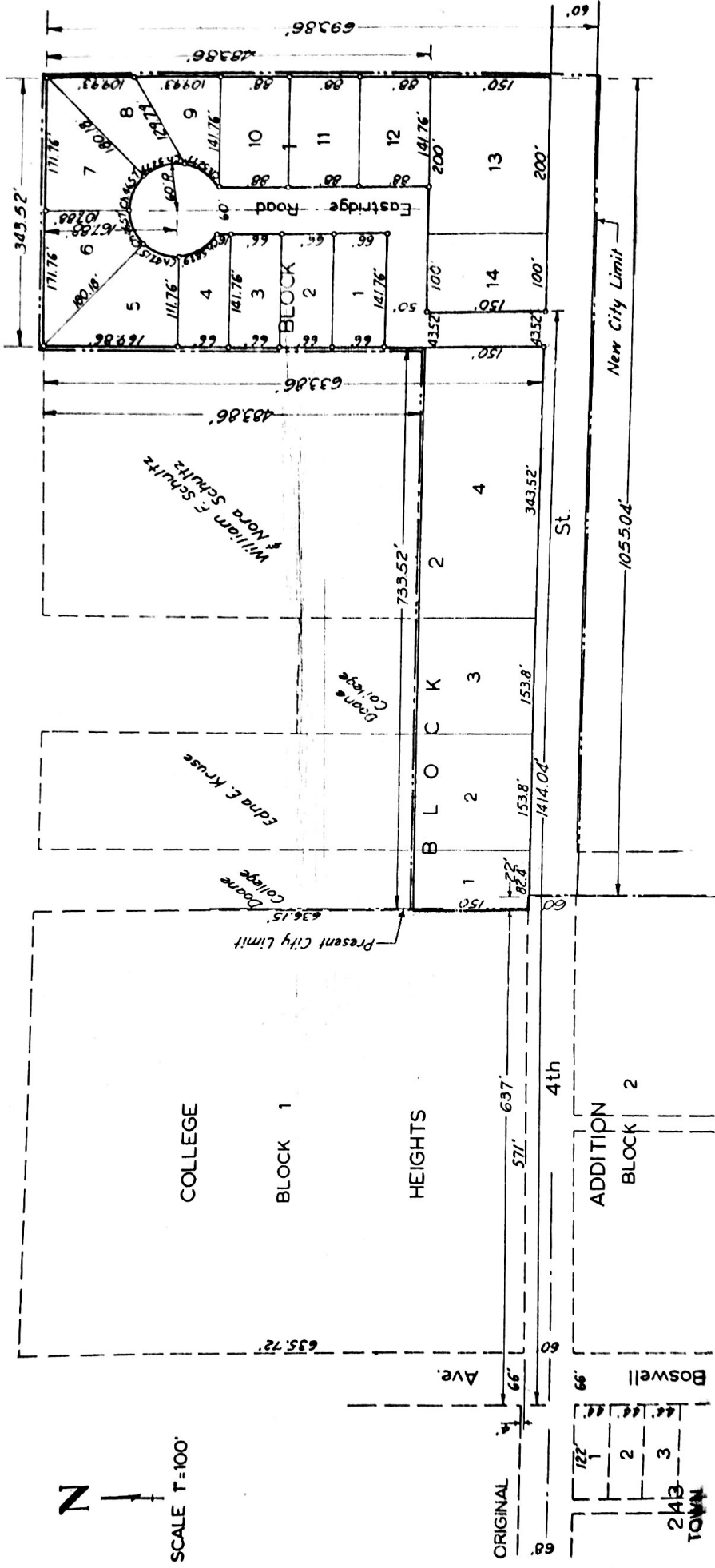


PARKER'S FIRST ADDITION
TO THE
CITY OF CRETE, NEBRASKA
PLAT



SCALE T=100'



CORPORATE ACKNOWLEDGEMENTS

State of Nebraska } s.s. On this 13th day of May 1961, before me, Saline County } the undersigned, a Notary Public, duly commissioned, qualified for and residing in said County, personally came Paul M. Parker, President of Parker and Jacobsen Lumber Company, a corporation, and Donald M. Typer, President of Doane College, a corporation, to me known to be such Presidents and the identical persons who signed the within STATEMENT AND DEDICATION, and, respectively, they acknowledged the execution thereof to be their voluntary act and deed as such officer and the voluntary act and deed of such corporation and that its corporate seal was there to affixed by its authority.

Witness my hand and Notarial Seal at the City of Crete, in said County, the day and year last above written.

My Commission expires Oct. 10, 1963

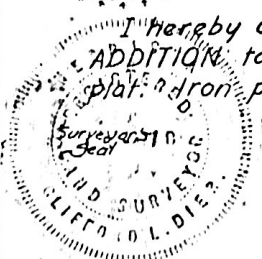
Ronald J. Hallstead
Notary Public



SURVEYOR'S CERTIFICATE

I hereby certify that I have surveyed and staked "PARKER'S FIRST ADDITION" to the City of Crete, Nebraska as the same appears on this plat. Iron pipe markers are set at all corners marked thus. Signed this 4th day of May 1961

Clifford J. Diehl
Surveyor



APPROVAL

Approved and accepted by the City Council of the City of Crete, Saline County, Nebraska by Ordinance No. 404 passed the 16th day of May 1961

George J. Peterson
City Clerk

Seal

STATEMENT AND DEDICATION

The foregoing subdivision of a part of the west one-half (W $\frac{1}{2}$) of Section 35, Township 8 North, Range 4 East of the 6th Principal Meridian, in Saline County, Nebraska "as appears on this plat" and described as follows:

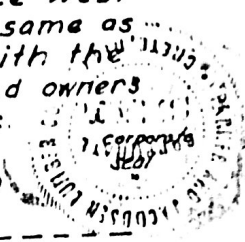
Beginning at a point sixty four (64) feet north and six hundred thirty seven (637) feet east of the northeast corner of lot one (1), block two hundred forty three (243) in the Original Town of Crete, Nebraska; thence north one hundred fifty (150) feet; thence east seven hundred thirty three and fifty two hundredths (733.52) feet; thence north four hundred eighty three and eighty six hundredths (483.86) feet; thence east three hundred forty three and fifty two hundredths (343.52) feet; thence south six hundred ninety three and eighty six hundredths (693.86) feet; thence west one thousand fifty five and four hundredths (1055.04) feet; thence north sixty (60) feet; thence west twenty two (22) feet to the point of beginning, and the platting of the same as "PARKER'S FIRST ADDITION to the City of Crete, Nebraska" is made with the free consent and in accordance with the desire of the undersigned owners and proprietors. The streets shown hereon are dedicated to the public.

Witness our hands this 13th day of May 1961.

PARKER AND JACOBSEN LUMBER COMPANY, a Corporation

Attest Melvin E. Parker
Secy. Treas. of Parker & Jacobsen Lumber Co.

by Paul M. Parker
President of Parker & Jacobsen Lumber Co.



DOANE COLLEGE, a Corporation

Attest J. E. Pallett
Secretary of Doane College

by Donald M. Luper
President of Doane College

Corporate Seal

INDIVIDUAL ACKNOWLEDGEMENTS

State of Nebraska }
Saline County } ss. On this 13th day of May, 1961, before me,
the undersigned, a Notary Public duly commissioned, qualified
for and residing in said County, personally came Elvin C.
Schultz and Dorothy M. Schultz, husband and wife; Leonard
J. Sinkule and Betty Sinkule, husband and wife; William F.
Schultz and Nora Schultz, husband and wife; and Edna E.
Kruse, a widow, to me personally known to be the identical
persons who signed the within STATEMENT AND DEDICATION,
and they acknowledged the execution thereof to be their
voluntary act and deed.

Elvin C. Schultz
Dorothy M. Schultz
Leonard Sinkule
Betty Sinkule
William F. Schultz
Nora Schultz
Edna E. Kruse

THE STATE OF NEBRASKA }
SALINE COUNTY } ss
Entered in numerical index and filed for record
in the County Clerk's Office of said County
the 22nd day of
May 1961
at 4 o'clock
P. M. and recorded in Book 104
Deeds on page 77

Witness my hand and Notarial Seal at the City of Crete,
said County, the day and year last above written.

My commission expires Oct. 10, 1963.
Gerald J. Hallstead
Notary Public

(From Ordinance No. 404 etc.,
see Misc. 24 Page 400)