

67  
SECOND

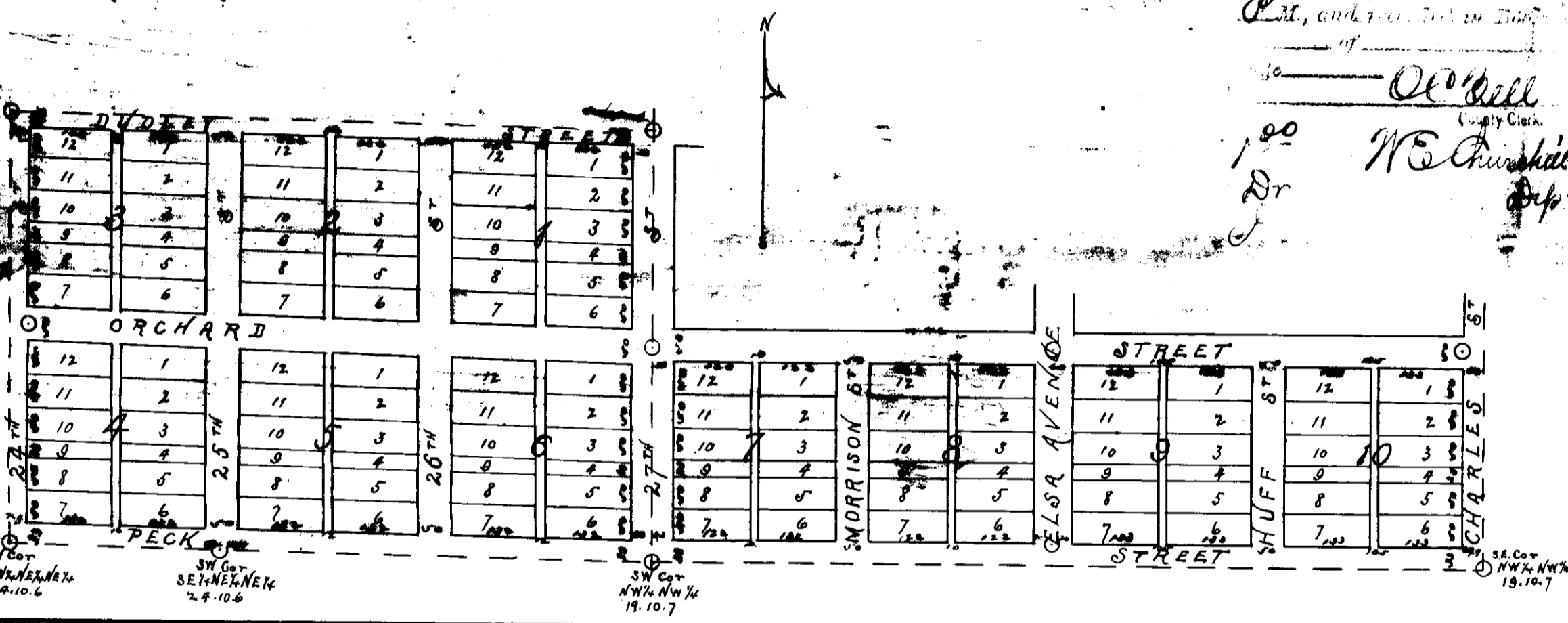
# EAST PARK

## ADDITION TO LINCOLN

### NEB.

Scale 1 inch = 200 ft

17<sup>th</sup> day of March 1887  
 P.M., and of the County of Lancaster  
 Nebraska  
 I, W. E. Churchill  
 County Clerk  
 do hereby certify that the foregoing is a true and correct copy of the original as the same appears on file in my office.



#### LEGEND

Second East Park Addition to Lincoln Neb. comprises all of the SE 1/4 NE 1/4 NE 1/4 and the E 1/2 SW 1/4 NE 1/4 NE 1/4 of Sec. 24, 10, 6 and all of blocks 7-8 of East Park Add. All north and south lot lines in blocks 1 to 6 are parallel to the East line of Sec. 24, 10, 6, and all E and W lot lines in same blocks are parallel with the South line of the NE 1/4 NE 1/4 of said Section. In blocks 7, 8, 9 and 10 all lot lines except West line of block 7 are parallel with or at right angles to South line of NE 1/4 NE 1/4 of Section 19, 10, 7. The dimensions of all lots streets and alleys are indicated in feet and decimals by red figures on the plat. Stones are set at points marked thus: (O) Stone at 27<sup>th</sup> and Dudley Sts is at center of Dudley St. East of 27<sup>th</sup> being 1/10 of a ft. North of N.E. cor SE 1/4 NE 1/4. Oak stakes are set at all lot corners on the block lines  
 Feb. 17 - 1887 J. P. Walton Co Surveyor  
 By Adna Robson Deputy

The foregoing subdivision of a strip 306 1/2 wide off the South side of the NW 1/4 of NW 1/4 of Section 19 T. 10 N. R. 7 E. heretofore known as Blocks 7 & 8 in East Park Addition and the SE 1/4 of the NE 1/4 of the NE 1/4 and the E 1/2 SW 1/4 of the NE 1/4 of the NE 1/4 of Section 24 T. 10 N. R. 6 E. of the 6<sup>th</sup> P.M. as the same appears on the annexed plat is with the free consent and in accordance with the desire of the undersigned owners and proprietors Signed this 17<sup>th</sup> day of March 1887  
 In presence of  
Frank L. Sheldon

The State of Nebraska, ss On this 17<sup>th</sup> day of March A.D. 1887 before me the subscriber a Notary Public duly commissioned and qualified for and residing in said county, personally came Frank L. Sheldon and Clara B. Sheldon husband and wife. Some persons known to be the identical persons who executed the foregoing instrument and they acknowledged the same to be their voluntary act and deed. Witness my hand and Notarial Seal the day and year last above written.  
Hal C. Young  
 Notary Public.