

MENARDS SUBDIVISION

(LOTS 1 THRU 10 INCLUSIVE AND OUTLOT "A" AND OUTLOT "B")
PART OF THE SE1/4 OF SECTION 13, T15N, R10E AND A REPLAT OF
LOT 3, SKYLINE COUNTRY 4TH ADDITION TO THE CITY OF
ELKHORN, DOUGLAS COUNTY, NEBRASKA

DEDICATION

KNOW ALL MEN BY THESE PRESENTS:

THAT I, MARK PROCHASKA, VICE PRESIDENT/REAL ESTATE OF MENARD, INC., OWNER AND PROPRIETOR OF THE LAND EMBRACED WITHIN THIS PLAT AND DESCRIBED HEREON, HAVE CAUSED THE SAME TO BE SUBDIVIDED INTO LOTS AND STREETS, SAID SUBDIVISION TO BE KNOWN AS MENARDS SUBDIVISION, AND I APPROVE THE DISPOSITION OF THE PROPERTY AS SHOWN ON THIS PLAT AND I HEREBY DEDICATE TO THE PUBLIC FOR PUBLIC USE THE STREETS AS SHOWN HEREON AND I DO ALSO GRANT THE EASEMENTS SHOWN ON THIS PLAT TO THE AGENCIES DESIGNATED AND THEIR ASSIGNS FOR THE PURPOSES NOTED. I DO FURTHER GRANT A PERPETUAL EASEMENT IN FAVOR OF AND GRANTING TO OMAHA PUBLIC POWER DISTRICT, AND ANY COMPANY WHICH HAS BEEN GRANTED A FRANCHISE TO PROVIDE A CABLE TELEVISION SYSTEM WITHIN THE BOUNDARIES OF THIS PLAT, AND QUEST COMMUNICATIONS, THEIR SUCCESSORS AND ASSIGNS, TO ERECT AND OPERATE, MAINTAIN, REPAIR, AND RENEW UNDERGROUND CABLES OR CONDUITS, POLES WITH NECESSARY SUPPORTS, SUSPENDING WIRES, CROSS ARMS, GUYS AND ANCHORS AND OTHER INSTRUMENTALITIES, AND EXTEND THEREON WIRE FOR THE CARRYING AND TRANSMISSION OF ELECTRIC CURRENT FOR LIGHT, HEAT, POWER AND THE TRANSMISSION OF SIGNALS AND SOUNDS FOR ALL KINDS INCLUDING SIGNALS PROVIDED BY A CABLE TELEVISION SYSTEM, AND THE RECEPTION ON, OVER, THROUGH, UNDER AND ACROSS A FIVE (5) FEET WIDE STRIP OF LAND ABUTTING THE FRONT AND THE SIDE BOUNDARY LINES OF ALL LOTS; AN EIGHT (8) FEET WIDE STRIP OF LAND ABUTTING THE REAR BOUNDARY LINES OF ALL INTERIOR LOTS; AND A SIXTEEN (16) FEET WIDE STRIP OF LAND ABUTTING THE REAR BOUNDARY LINES OF ALL EXTERIOR LOTS THAT ARE NOT ADJACENT TO PRESENTLY PLATTED AND RECORDED LOTS. THE SIXTEEN (16) FEET WIDE EASEMENT WILL BE REDUCED TO AN EIGHT (8) FEET WIDE STRIP WHEN THE ADJACENT LAND IS SURVEYED, PLATTED, AND RECORDED, DO FURTHER GRANT A PERPETUAL EASEMENT TO THE METROPOLITAN UTILITIES DISTRICT OF OMAHA, THEIR SUCCESSORS AND ASSIGNS, TO ERECT, INSTALL, OPERATE, MAINTAIN, REPAIR AND RENEW FIRELINES, HYDRANTS, VALVES, AND OTHER RELATED FACILITIES, AND TO EXTEND THEREON PIPES FOR THE TRANSMISSION OF NATURAL GAS AND WATER ON, OVER, THROUGH, UNDER AND ACROSS A FIVE (5) FOOT WIDE STRIP OF LAND ABUTTING ALL SIDES, WHETHER PUBLIC OR PRIVATE, NO PERMANENT BUILDINGS OR RETAINING WALLS SHALL BE PLACED IN THE ABOVE DESCRIBED EASEMENT WAYS, BUT THE SAME MAY BE USED FOR GARDENS, SHRUBS, LANDSCAPING AND OTHER PURPOSES THAT DO NOT THEN OR LATER INTERFERE WITH THE FORESAID USES OR RIGHTS HEREIN GRANTED.

IN WITNESS WHEREOF, WE DO HEREBY SET OUR HANDS:

MENARD, INC.

BY: Mark Prochaska
MARK PROCHASKA
VICE PRESIDENT/REAL ESTATE

2-23-06

DATE

CORPORATION ACKNOWLEDGEMENT

STATE OF NE
COUNTY OF Douglas SS

ON THIS 23 DAY OF Feb, 2006, A.D., BEFORE ME A NOTARY PUBLIC IN FOR SAID COUNTY PERSONALLY CAME THE ABOVE, MARK PROCHASKA, VICE PRESIDENT/REAL ESTATE OF MENARD, INC., WHO IS PERSONALLY KNOWN TO ME TO BE THE IDENTICAL PERSONS WHOSE NAMES ARE AFFIXED TO THE INSTRUMENT, AND THEY ACKNOWLEDGE THE EXECUTION THEREFORE TO BE THEIR VOLUNTARY ACT AND DEED AS SUCH OFFICER AND VOLUNTARY ACT AND DEED OF SAID CORPORATION AND THE CORPORATE SEAL OF SAID CORPORATION WAS HERETO AFFIXED BY ITS AUTHORITY.

Julia M. Swanson
NOTARY PUBLIC

MY COMMISSION EXPIRES ON THE 8 DAY OF October, 2007, A.D.



SURVEYOR'S CERTIFICATE

I, CHAD W. MARSH, A REGISTERED LAND SURVEYOR IN THE STATE OF NEBRASKA, HEREBY CERTIFY THAT MENARDS SUBDIVISION (LOTS 1 THRU 10, INCLUSIVE AND OUTLOT "A" AND OUTLOT "B"), WAS SURVEYED UNDER MY DIRECT SUPERVISION AND THAT SAID PLAT IS CORRECT TO THE BEST OF MY KNOWLEDGE AND BELIEF. 5/8" X 24" REELS WITH PLASTIC CAPS WILL BE PLACED AT ALL LOTS CORNERS AS SHOWN HEREON UPON COMPLETION OF IMPROVEMENTS.

Chad W. Marsh
CHAD W. MARSH, L.S. #560
FEBRUARY 14, 2006



ELKHORN CITY COUNCIL ACCEPTANCE

THIS PLAT OF MENARDS SUBDIVISION WAS APPROVED AND ACCEPTED BY THE CITY COUNCIL OF ELKHORN, NEBRASKA THIS 12 DAY OF October, 2006, A.D.

Phillip E. Higgins
CITY CLERK

Chad W. Marsh
CITY CLERK

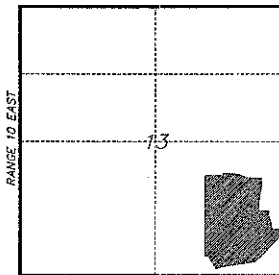
APPROVAL OF CITY PLANNING BOARD

THIS PLAT OF MENARDS SUBDIVISION WAS APPROVED BY THE CITY PLANNING COMMISSION OF THE CITY OF ELKHORN, NEBRASKA THIS 12 DAY OF October, 2006, A.D.

Phil Higgins
CHAIRPERSON



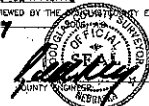
VICINITY SKETCH



TOWNSHIP 15 NORTH

COUNTY ENGINEER'S CERTIFICATE

THIS PLAT OF MENARDS SUBDIVISION WAS REVIEWED BY THE COUNTY ENGINEER'S OFFICE ON THIS 12 DAY OF October, 2006, A.D.



COUNTY TREASURER'S CERTIFICATE

THIS IS TO CERTIFY THAT I FIND NO REGULAR OR SPECIAL TAXES DUE OR DELINQUENT AGAINST THE PROPERTY DESCRIBED IN THE SURVEYOR'S CERTIFICATE AND EMBRACED IN THIS PLAT AS

SHOWN BY THE RECORDS OF THIS OFFICE DATED THIS 12 DAY OF October, 2006, A.D.

COUNTY TREASURER

KIRKHAM
MICHAEL

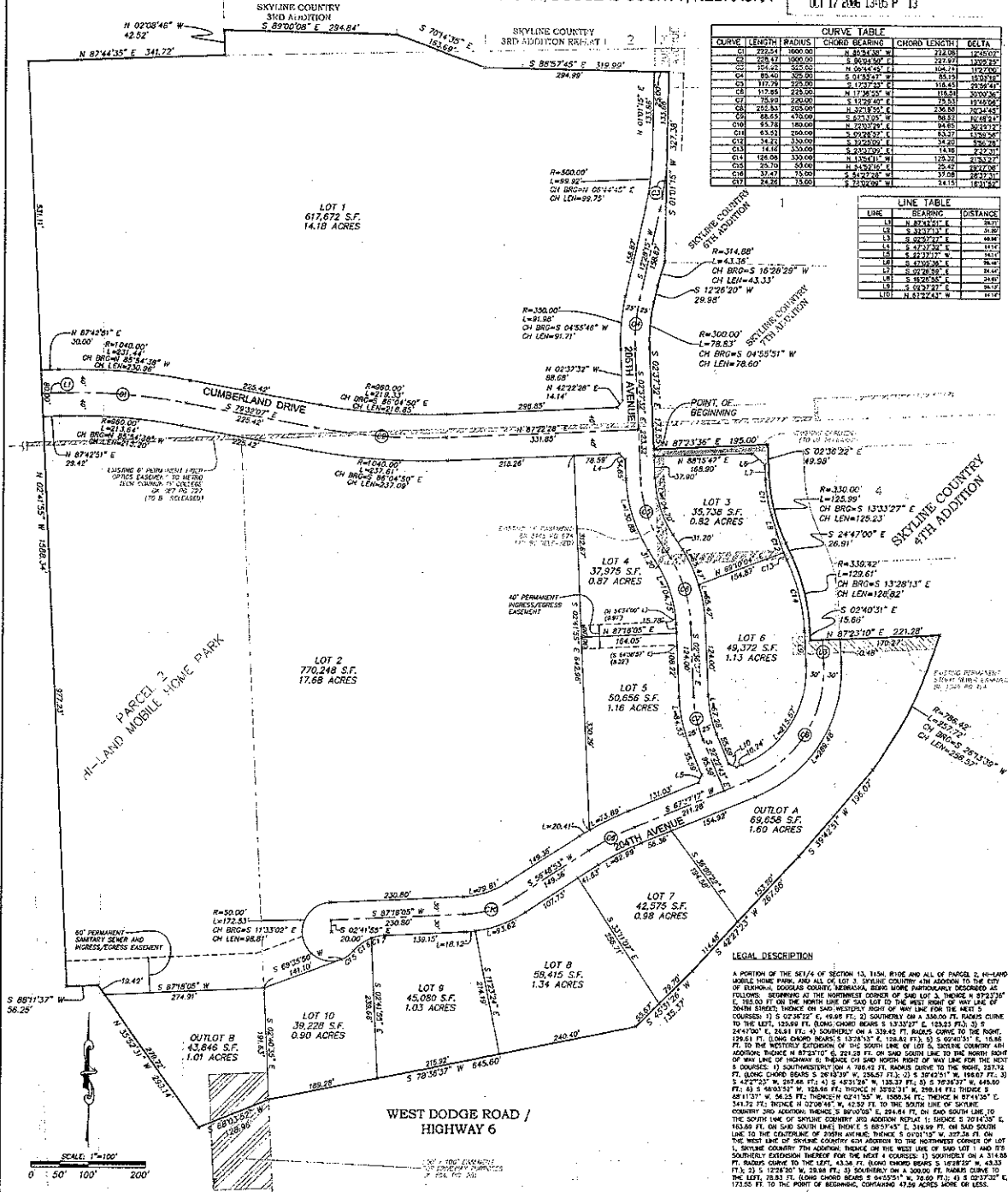
FINAL PLAT
PART OF THE MENARDS SUBDIVISION
LOT 1, MENARDS SUBDIVISION, DOUGLAS COUNTY, NEBRASKA

MENARDS SUBDIVISION

MENARDS SUBDIVISION

(LOTS 1 THRU 10 INCLUSIVE AND OUTLOT "A" AND OUTLOT "B") PART OF THE SE 1/4 OF SECTION 13, T15N, R10E AND A REPLAT OF PARCEL 2, HI-LAND MOBILE HOME PARK AND A REPLAT OF LOT 3, SKYLINE COUNTRY 4TH ADDITION TO THE CITY OF ELKHORN, DOUGLAS COUNTY, NEBRASKA

DEED 2006.15561
OCT 17 2006 13:05 P 13



CURVE	LENGTH	RADIUS	CHORD BEARING	CHORD LENGTH	DELTA
C1	222.54	1600.00	N 84°31'30" E	212.08	12°40'00"
C2	105.11	800.00	S 84°31'30" E	102.97	12°40'00"
C3	105.11	800.00	N 84°31'30" E	102.97	12°40'00"
C4	89.40	600.00	S 84°31'30" E	86.79	10°20'00"
C5	117.79	700.00	N 84°31'30" E	114.83	10°20'00"
C6	117.85	700.00	S 84°31'30" E	114.83	10°20'00"
C7	78.89	600.00	N 84°31'30" E	76.82	12°40'00"
C8	222.54	1600.00	S 84°31'30" E	212.08	12°40'00"
C9	88.65	450.00	N 84°31'30" E	86.71	16°48'24"
C10	85.16	380.00	S 84°31'30" E	82.81	16°48'24"
C11	63.31	250.00	N 84°31'30" E	61.37	13°30'00"
C12	114.10	350.00	S 84°31'30" E	110.20	13°30'00"
C13	128.06	350.00	N 84°31'30" E	123.27	13°30'00"
C14	25.70	240.00	S 84°31'30" E	24.72	13°30'00"
C15	37.47	150.00	N 84°31'30" E	36.28	13°30'00"
C16	34.80	150.00	S 84°31'30" E	33.71	13°30'00"

LINE	BEARING	DISTANCE
L1	S 84°31'30" E	26.00
L2	S 84°31'30" E	51.80
L3	S 84°31'30" E	48.84
L4	S 84°31'30" E	11.11
L5	S 84°31'30" E	14.11
L6	S 84°31'30" E	78.44
L7	S 84°31'30" E	14.47
L8	S 84°31'30" E	24.87
L9	S 84°31'30" E	22.47
L10	S 84°31'30" E	11.11