

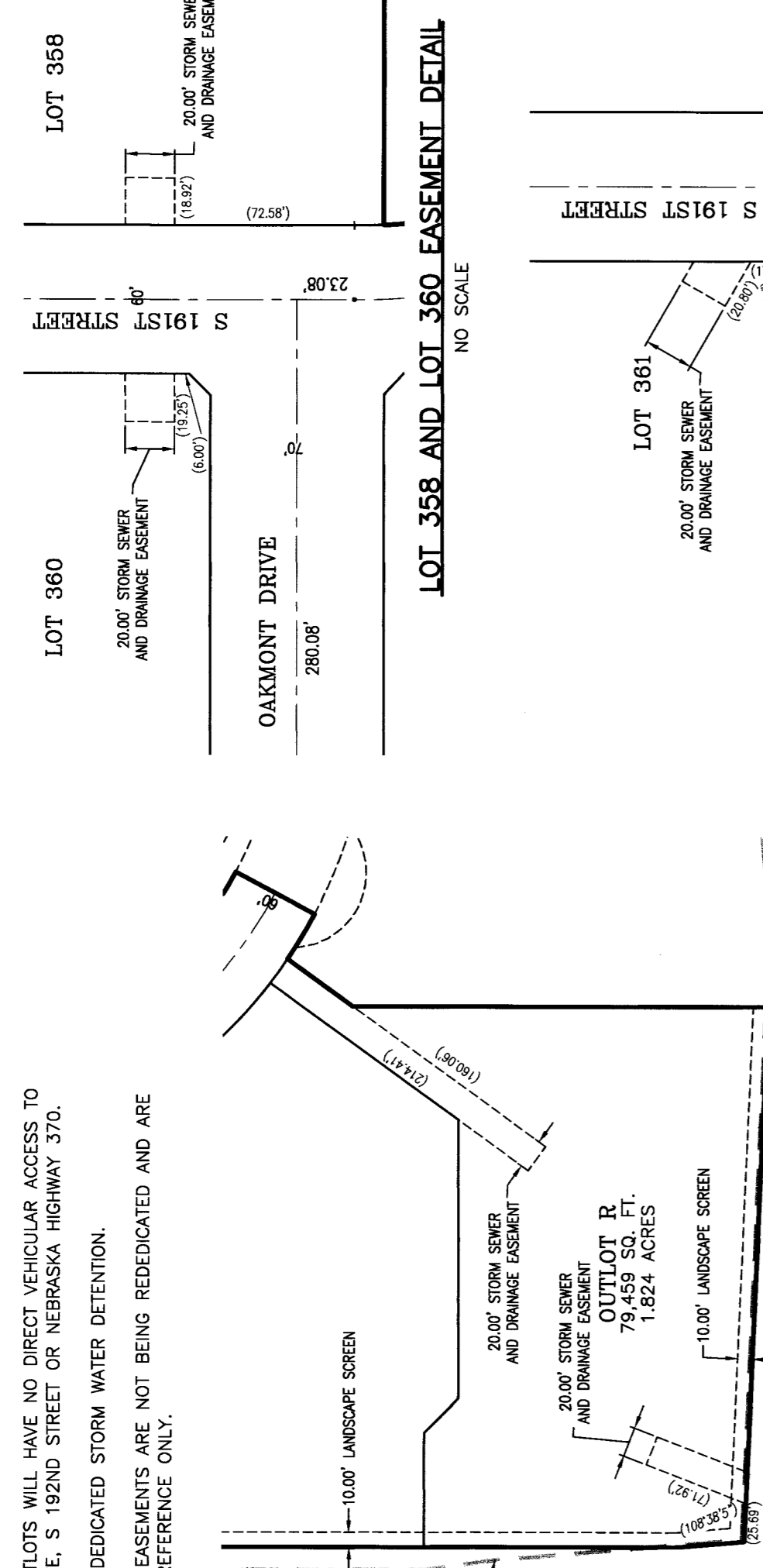
NOTES

- 1. ALL DISTANCES ARE SHOWN IN DECIMAL FEET.
2. ALL DISTANCES SHOWN ALONG CURVES ARE ARC DISTANCES NOT CHORD DISTANCES.
3. ALL ANGLES ARE 90 UNLESS OTHERWISE NOTED.
4. ALL LOT LINES ON CURVED STREETS ARE RADIAL UNLESS OTHERWISE NOTED WITH AN ANGLE ADJACENT TO THE CURVE.
5. DISTANCES AND ANGLES SHOWN IN PARENTHESES REFER TO EASEMENTS.
6. LOTS AND OUTLOTS WILL HAVE NO DIRECT VEHICULAR ACCESS TO CYPRESS DRIVE, S 192ND STREET OR NEBRASKA HIGHWAY 370.
7. OUTLOT R IS DEDICATED STORM WATER DETENTION.
8. ALL EXISTING EASEMENTS ARE NOT BEING REDEDICATED AND ARE SHOWN FOR REFERENCE ONLY.

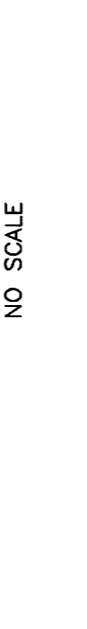
SECTION CORNER TIES

SECTION CORNER TIES: SECTION SW 1/4, R11E SURVEY SHOWN IN THIS SURVEY SHOWN IN THIS SURVEY...

TYPICAL CORNER LOT CHANGES DETAIL



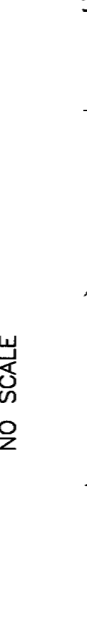
OUTLOT R EASEMENT DETAIL



LOT 361 EASEMENT DETAIL



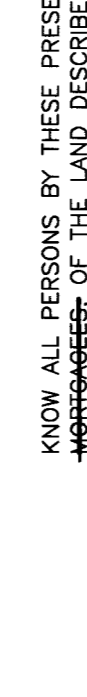
LOT 358 AND LOT 360 EASEMENT DETAIL



LOT 362 EASEMENT DETAIL



LOT 363 EASEMENT DETAIL

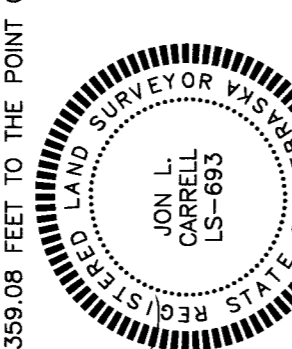


ASPEN CREEK

LOTS 358 THROUGH 363, INCLUSIVE, AND OUTLOT R, BEING A PLATTING OF THAT PART OF THE WEST HALF OF THE SOUTHWEST QUARTER, SECTION 29, TOWNSHIP 14 NORTH, RANGE 11 EAST OF THE 6TH P.M., SARY COUNTY, NEBRASKA

LAND SURVEYOR'S CERTIFICATE

I HEREBY CERTIFY THAT I HAVE MADE A BOUNDARY SURVEY OF THE SUBDIVISION HEREIN AND THAT PERMANENT MONUMENTS HAVE BEEN PLACED AT ALL CORNERS, ANGLE POINTS AND ENDS OF CURVES ON THE BOUNDARY ON THE PLAT AND THAT PERMANENT MONUMENTS WILL BE PLACED AT ALL CORNERS, ANGLE POINTS AND ENDS OF CURVES ON ALL LOTS AND STREETS WITHIN THE SUBDIVISION TO BE KNOWN AS ASPEN CREEK, LOTS 358 THROUGH 363, INCLUSIVE, AND OUTLOT R, BEING A PLATTING OF THAT PART OF THE WEST HALF OF THE SOUTHWEST QUARTER, SECTION 29, TOWNSHIP 14 NORTH, RANGE 11 EAST OF THE 6TH P.M., SARY COUNTY, NEBRASKA, DESCRIBED AS FOLLOWS:



DEDICATION

KNOW ALL PERSONS BY THESE PRESENTS: THAT WE, 192ND & CYPRESS LLC, A NEBRASKA LIMITED LIABILITY COMPANY, OWNERS AND GREAT WESTERN BANK, KNOWINGLY AND VOLUNTARILY GRANT TO THE CITY OF GRETTA, NEBRASKA, THE PERPETUAL RIGHT OF WAY FOR THE CONSTRUCTION AND MAINTENANCE OF ENTRANCE MARKERS AND LANDSCAPING TO SANITARY AND IMPROVEMENT DISTRICT NUMBER 288 AND THE HOME OWNERS ASSOCIATION, ITS SUCCESSOR AND ASSIGNS.

Table with 4 columns: CURVE #, RADIUS, ARC LENGTH, CHORD LENGTH, DELTA ANGLE. Row 1: C1, 300.00, 324.33, 308.77, 91.19434°



Table with 2 columns: SECTION LINE, BOUNDARY CORNER. Row 1: SECTION LINE, BOUNDARY CORNER

LEGEND: SECTION LINE, BOUNDARY CORNER, BOUNDARY LINE, LOT LINE, EXISTING LOT LINE, EASEMENT LINE, NO INGRESS/ EGRESS LINE

FOR POWER AND COMMUNICATIONS GRANTED TO THE OMAHA PUBLIC POWER DISTRICT AND ANY TELECOMMUNICATIONS ENTITY OR OTHER CORPORATION TRANSMITTING AND RECEIVING TELEPHONE, TELEVISION, CABLE, AND OTHER SIGNALS TO USE THE CITY STREETS, TO ELECT, OPERATE, MAINTAIN, REPAIR AND RENEW POLES, WIRES, CABLES, CONDUITS, AND OTHER RELATED FACILITIES, AND TO EXTEND THEREON WIRES OR CABLES FOR THE CARPING AND TRANSMISSION OF ELECTRIC CURRENT FOR LIGHT, HEAT AND POWER, AND TO INSTALL AND MAINTAIN UNDER AND ABOVE A FIVE-FOOT-WIDE STRIP OF LAND ABUTTING ALL CURVE-SAC STREETS AND ALONG ALL STREET STRIPS OF LAND ABUTTING ALL FRONT AND SIDE BOUNDARY LOT LINES, AND AN EIGHT-FOOT-WIDE STRIP OF LAND ABUTTING THE REAR BOUNDARY LINES OF ALL INTERIOR LOTS, AND A FIVE-FOOT-WIDE STRIP OF LAND ABUTTING THE REAR BOUNDARY LINES OF ALL EXTERIOR LOTS, THE TERM 'EXTERIOR LOT' IS HEREIN DEFINED AS A LOT THAT ADJACENTS TO A STREET OR HIGHWAY AND IS NOT ADJACENT TO ANOTHER LOT OR LOTS.

FOR WATER AND GAS SERVICE TO BE OBTAINED BY THE CITY OF GRETTA, NEBRASKA, AND TO INSTALL, OPERATE, MAINTAIN, REPAIR AND RENEW PIPES, MAINS, AND OTHER FACILITIES FOR THE TRANSMISSION OF GAS AND WATER ON, THROUGH, UNDER AND ABOVE A FIVE-FOOT-WIDE STRIP OF LAND ABUTTING ALL CURVE-SAC STREETS AND ALONG ALL STREET STRIPS OF LAND ABUTTING ALL FRONT AND SIDE BOUNDARY LOT LINES, AND AN EIGHT-FOOT-WIDE STRIP OF LAND ABUTTING THE REAR BOUNDARY LINES OF ALL INTERIOR LOTS, AND A FIVE-FOOT-WIDE STRIP OF LAND ABUTTING THE REAR BOUNDARY LINES OF ALL EXTERIOR LOTS, THE TERM 'EXTERIOR LOT' IS HEREIN DEFINED AS A LOT THAT ADJACENTS TO A STREET OR HIGHWAY AND IS NOT ADJACENT TO ANOTHER LOT OR LOTS.

FOR DRAINAGE AND STORM SEWERS AND SANITARY SEWERS WE DO HEREBY GRANT THE PERPETUAL STORM SEWER AND DRAINAGE EASEMENTS AND THE PERPETUAL SANITARY SEWER EASEMENTS SHOWN HEREON FOR THE CONSTRUCTION AND MAINTENANCE OF ENTRANCE MARKERS AND LANDSCAPING TO SANITARY AND IMPROVEMENT DISTRICT NUMBER 288 AND THE HOME OWNERS ASSOCIATION, ITS SUCCESSOR AND ASSIGNS.

FOR ENTRANCE MARKERS AND LANDSCAPING WE DO HEREBY GRANT ENTRANCE MARKER AND LANDSCAPE EASEMENTS SHOWN HEREON FOR THE CONSTRUCTION AND MAINTENANCE OF ENTRANCE MARKERS AND LANDSCAPING TO SANITARY AND IMPROVEMENT DISTRICT NUMBER 288 AND THE HOME OWNERS ASSOCIATION, ITS SUCCESSOR AND ASSIGNS.

192ND & CYPRESS LLC, A NEBRASKA LIMITED LIABILITY COMPANY, OWNER

ACKNOWLEDGEMENT OF NOTARIES: STATE OF NEBRASKA, COUNTY OF SARPY, THE FOREGOING INSTRUMENT WAS ACKNOWLEDGED BEFORE ME THIS 4 DAY OF October, 2019.

BY: GERALD L. TORZCON, PRESIDENT OF 192ND & CYPRESS LLC, A NEBRASKA LIMITED LIABILITY COMPANY, ON BEHALF OF SAID COMPANY.

REVIEW BY SARY COUNTY PUBLIC WORKS: THIS PLAT OF ASPEN CREEK, LOTS 358 THROUGH 363, INCLUSIVE AND OUTLOT R, WAS REVIEWED BY THE SARY COUNTY SURVEYOR'S OFFICE THIS 27th DAY OF October, 2019.

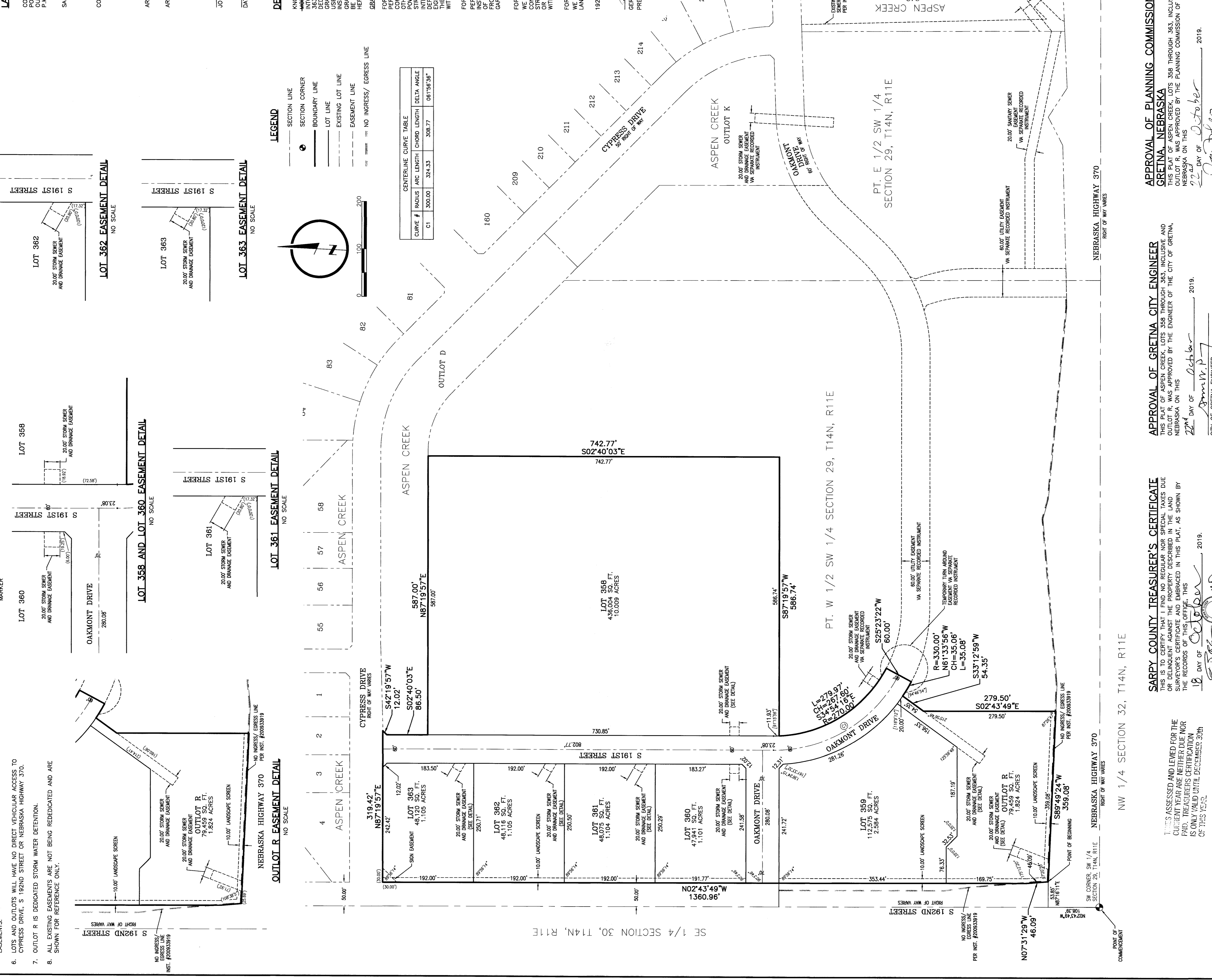
APPROVAL OF GRETTA CITY COUNCIL: THIS PLAT OF ASPEN CREEK, LOTS 358 THROUGH 363, INCLUSIVE AND OUTLOT R, WAS APPROVED BY THE PLANNING COMMISSION OF GRETTA, NEBRASKA ON THIS 22nd DAY OF October, 2019.

APPROVAL OF GRETTA CITY ENGINEER: THIS IS TO CERTIFY THAT I HAVE REVIEWED THIS PLAT AND THE SURVEYOR'S CERTIFICATE AND EMBRACED IN THIS PLAT, AS SHOWN BY THE RECORDS OF THIS OFFICE, THIS 18th DAY OF October, 2019.

APPROVAL OF GRETTA CITY ENGINEER: THIS IS TO CERTIFY THAT I HAVE REVIEWED THIS PLAT AND THE SURVEYOR'S CERTIFICATE AND EMBRACED IN THIS PLAT, AS SHOWN BY THE RECORDS OF THIS OFFICE, THIS 18th DAY OF October, 2019.

APPROVAL OF GRETTA CITY ENGINEER: THIS IS TO CERTIFY THAT I HAVE REVIEWED THIS PLAT AND THE SURVEYOR'S CERTIFICATE AND EMBRACED IN THIS PLAT, AS SHOWN BY THE RECORDS OF THIS OFFICE, THIS 18th DAY OF October, 2019.

APPROVAL OF GRETTA CITY ENGINEER: THIS IS TO CERTIFY THAT I HAVE REVIEWED THIS PLAT AND THE SURVEYOR'S CERTIFICATE AND EMBRACED IN THIS PLAT, AS SHOWN BY THE RECORDS OF THIS OFFICE, THIS 18th DAY OF October, 2019.



LOCATED IN: NW 1/4 SW 1/4 SEC. 29, T14N, R11E SW 1/4 SW 1/4 SEC. 29, T14N, R11E INSTRUMENT NUMBER: 2019-27362 DATE: 11/05/2019 12:51:50 PM COUNTY: SARY COUNTY, NEBRASKA

FILED SARY COUNTY NEBRASKA INSTRUMENT NUMBER: 2019-27362 DATE: 11/05/2019 12:51:50 PM COUNTY: SARY COUNTY, NEBRASKA