



BK 2228 PG 111-156



DEED 2002 17315

Nebr Doc
Stamp Tax

12-3-02

Date

\$ 5.44

By JWC

RICHARD M. TAYLOR
REGISTER OF DEEDS
STATE OF NEBRASKA

2002 DEC -3 AM 8:16

RECEIVED

THIS PAGE INCLUDED FOR INDEXING
PAGE DOWN FOR BALANCE OF INSTRUMENT

deed D- *New-07-399206*
 FEE 429.00 *03-80000-old*
46 BKP 15-15-13010 COMP yr *FB01-60000-old*
398 DEL MD SCAN CR FV MD
BK 15-15-13010

UNION PACIFIC PLACE

Lots 3 through 13, inclusive being a resubdivision of Blocks 2, 3, 4, 5, 30, 31, 35, 36, 64, 94, 296, 300, 311, 312, 313, 314, 315, 316, 322, 323, 324, 325, 326, 327, 329, 330, 331, 332, 333, 334, 354, 355, 356, 357, 358, and 359, ORIGINAL CITY OF OMAHA, a subdivision, as surveyed, lithographed and recorded in Douglas County, Nebraska; TOGETHER WITH Part of Blocks 1, 6, 28, 29, 63, 65, 69, 70, 95, 266, 317, 321, 328, 335, 360, C, M, N, O, P, and Q, ORIGINAL CITY OF OMAHA; AND ALSO TOGETHER WITH Part of 7th, 8th, 9th, 10th, 11th, 12th, 13th, 14th, Dodge, Capitol, Davenport, Chicago, Coas, California, Webster, Burt, Cuming, Izard, Nicholas, Napoleon, Chestnut and Elm Streets and the alleys through the aforesaid blocks, as dedicated in the ORIGINAL CITY OF OMAHA AND ALSO TOGETHER WITH part of Abbott Drive as acquired for right of way; AND ALSO TOGETHER WITH Tax Lot 4, in the Northeast Quarter of Section 15, Township 15 North, Range 13 East of the 6th P.M., Douglas County, Nebraska.

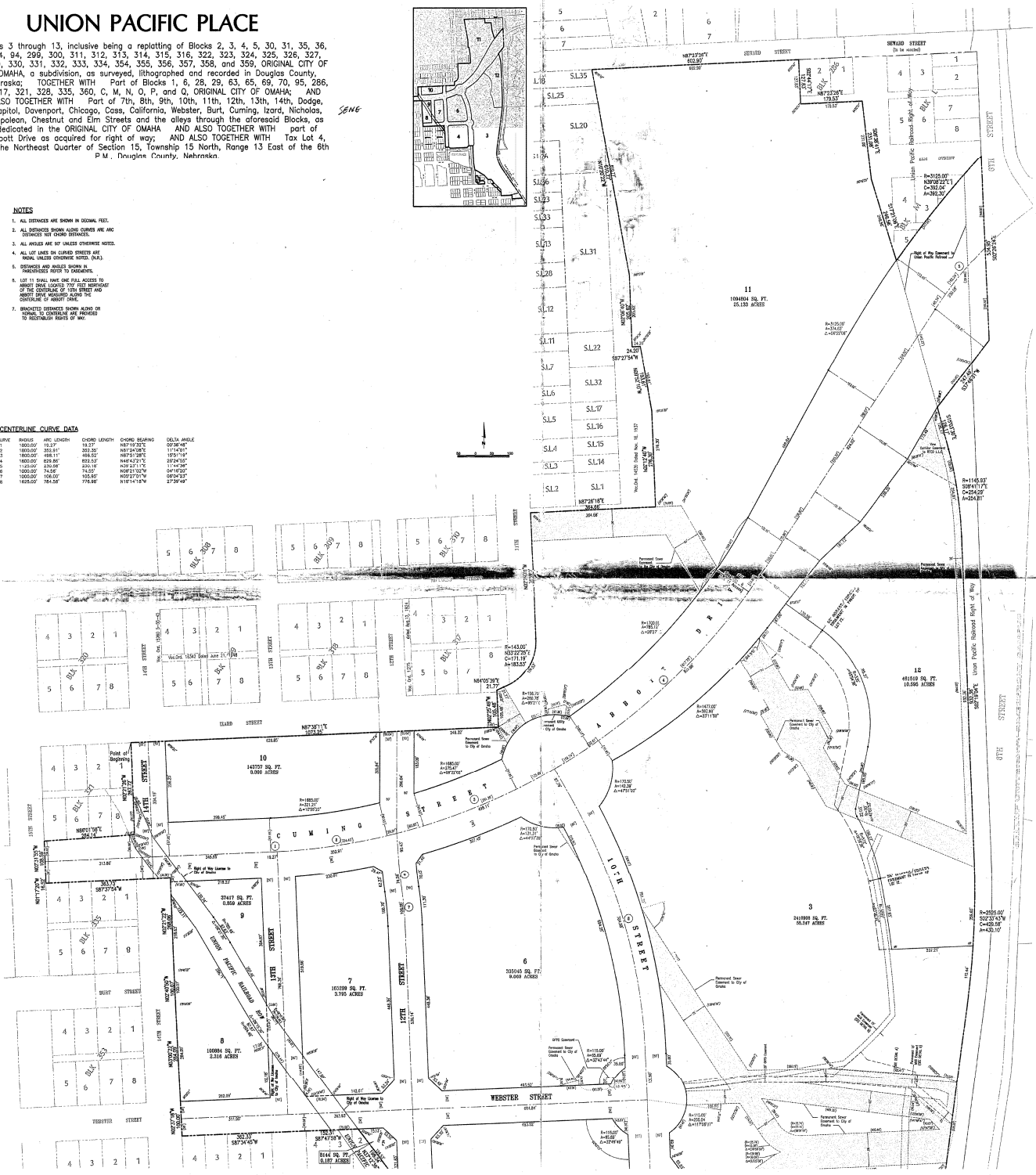


NOTES

1. ALL DIMENSIONS ARE SHOWN IN DECIMAL FEET.
2. ALL DIMENSIONS SHOW ADJACENT CORNER ARE AND DIMENSIONS NOT SHOWN OTHERWISE.
3. ALL ANGLES ARE OF UNLESS OTHERWISE NOTED.
4. ALL LOT LINES ON CURVED STREETS ARE SHOWN UNLESS OTHERWISE NOTED.
5. DIMENSIONS AND ANGLES SHOWN IN THIS INSTRUMENT ARE TO BE CONSIDERED AS THE CORNER OF THE PROPERTY AND NOT THE CENTERLINE OF ANY STREET.
6. LOT 11 SHALL HAVE ONE FULL ACCESS TO THE PUBLIC HIGHWAY FROM THE NORTHWEST CORNER OF THE LOT.
7. DIMENSIONS BETWEEN SHOWN HEREIN ARE NORMAL TO CENTERLINE OF ROAD OR PROVIDED TO RECEIVERS POINTS OF WAY.

CENTERLINE CURVE DATA

CURVE	RADIUS	ARC LENGTH	CHORD LENGTH	CHORD BEARING	DELTA ANGLE
C1	1800.00'	183.37'	183.37'	N87°12'37" E	90°00'00"
C2	1800.00'	355.81'	355.81'	N87°12'37" E	171°42'17"
C3	1800.00'	488.11'	488.11'	N87°12'37" E	197°10'18"
C4	1800.00'	620.41'	620.41'	N87°12'37" E	212°42'17"
C5	1800.00'	752.71'	752.71'	N87°12'37" E	219°10'18"
C6	1800.00'	885.01'	885.01'	N87°12'37" E	225°42'17"
C7	1800.00'	1017.31'	1017.31'	N87°12'37" E	232°10'18"
C8	1800.00'	1149.61'	1149.61'	N87°12'37" E	238°42'17"
C9	1800.00'	1281.91'	1281.91'	N87°12'37" E	245°10'18"
C10	1800.00'	1414.21'	1414.21'	N87°12'37" E	251°42'17"



Drawn by	Checked by
Designed by	Reviewed by
Field notes	Field notes
Survey notes	Survey notes
As-built notes	As-built notes

lamp, ryanerson & associates, inc.
 1475 W. 10th Street, Suite 100
 Omaha, Nebraska 68104
 Phone: 402.442.2121
 Fax: 402.442.2122

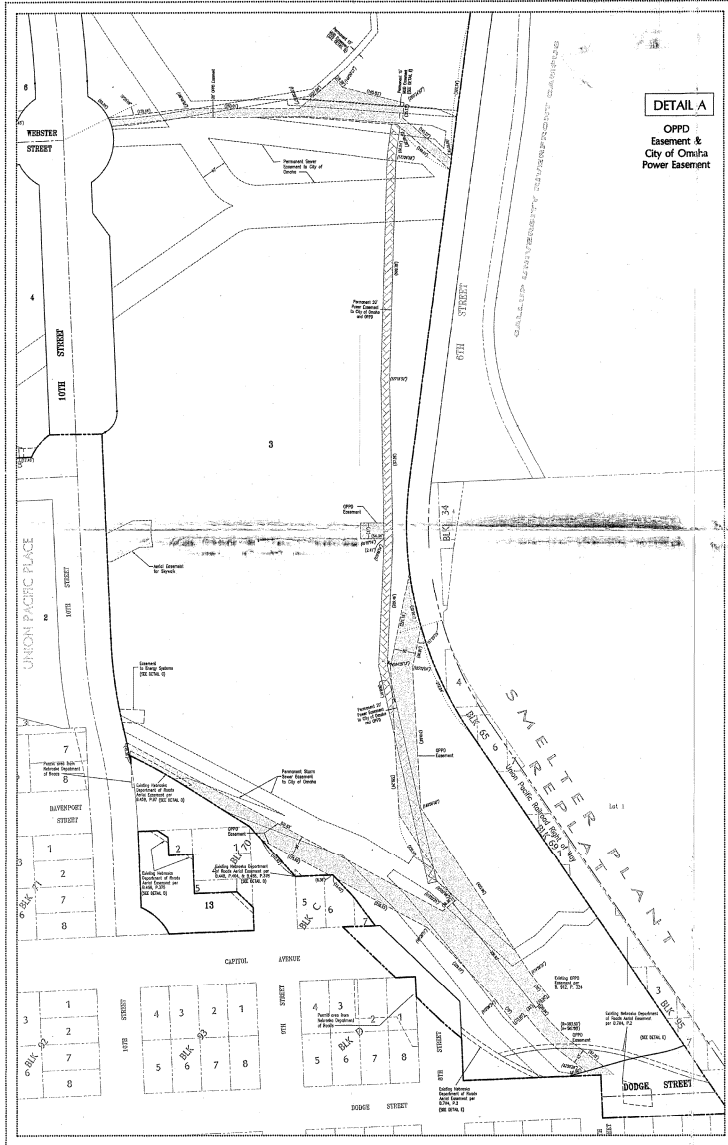
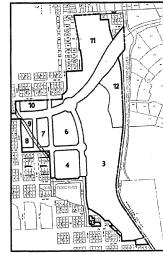
UNION PACIFIC PLACE (LOTS 3 THROUGH 13)
 DODGE COUNTY, NEBRASKA
 CITY OF OMAHA, DOUGLAS COUNTY, NEBRASKA

UNION PACIFIC PLACE

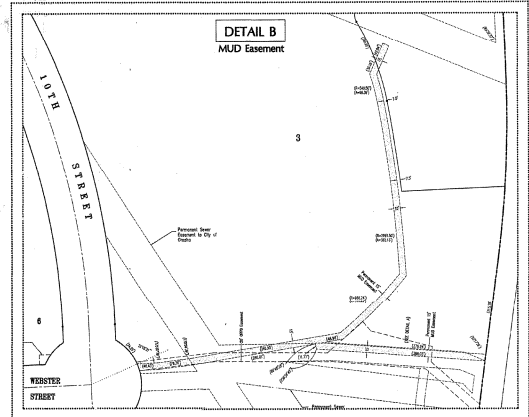
Lots 3 through 13, inclusive being a replatting of Blocks 2, 3, 4, 5, 30, 31, 35, 36, 64, 94, 299, 300, 311, 312, 313, 314, 315, 316, 322, 323, 324, 325, 326, 327, 329, 330, 331, 332, 333, 334, 354, 355, 356, 357, 358, and 359, ORIGINAL CITY OF OMAHA, a subdivision, as surveyed, lithographed and recorded in Douglas County, Nebraska; TOGETHER WITH Part of Blocks 1, 6, 28, 29, 63, 65, 69, 70, 95, 286, 317, 321, 328, 335, 360, C, M, N, O, P, and Q, ORIGINAL CITY OF OMAHA; AND ALSO TOGETHER WITH Part of 7th, 8th, 9th, 10th, 11th, 12th, 13th, 14th, Dodge, Capitol, Davenport, Chicago, Coss, California, Webster, Burt, Curming, Izora, Nicholas, Napoleon, Chestnut and Elm Streets and the alleys through the aforesaid Blocks, as dedicated in the ORIGINAL CITY OF OMAHA AND ALSO TOGETHER WITH part of Abbott Drive as acquired for right of way; AND ALSO TOGETHER WITH Tax Lot 4, in the Northeast Quarter of Section 15, Township 15 North, Range 13 East of the 6th P.M., Douglas County, Nebraska.



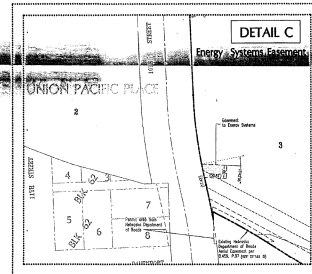
EASEMENT DETAILS



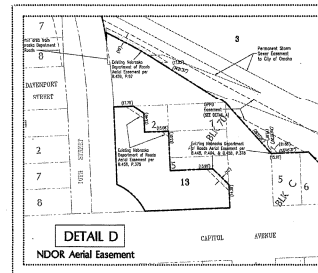
DETAIL A
OPFD
Easement &
City of Omaha
Power Easement



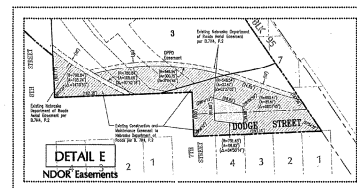
DETAIL B
MUD Easement



DETAIL C
Energy Systems Easement



DETAIL D
NDOR Aerial Easement



DETAIL E
NDOR Easements

drawn by	SET
designed by	PKC
reviewed by	PKC
path/trace	0000_0000_0000_0000
version	
revision	
date	
sheet	

lamp rynearson & associates, inc.
 1515 West Dodge Street, Suite 100
 Omaha, Nebraska 68102
 Phone: 402.466.2240
 Fax: 402.466.2242

UNION PACIFIC PLACE (LOTS 3 THROUGH 13)
 CITY OF OMAHA, DOUGLAS COUNTY, NEBRASKA

FINAL
PLAT

job number-tasks
000001-01-215
book page
date
10/20/02
sheet
3 of 3

