

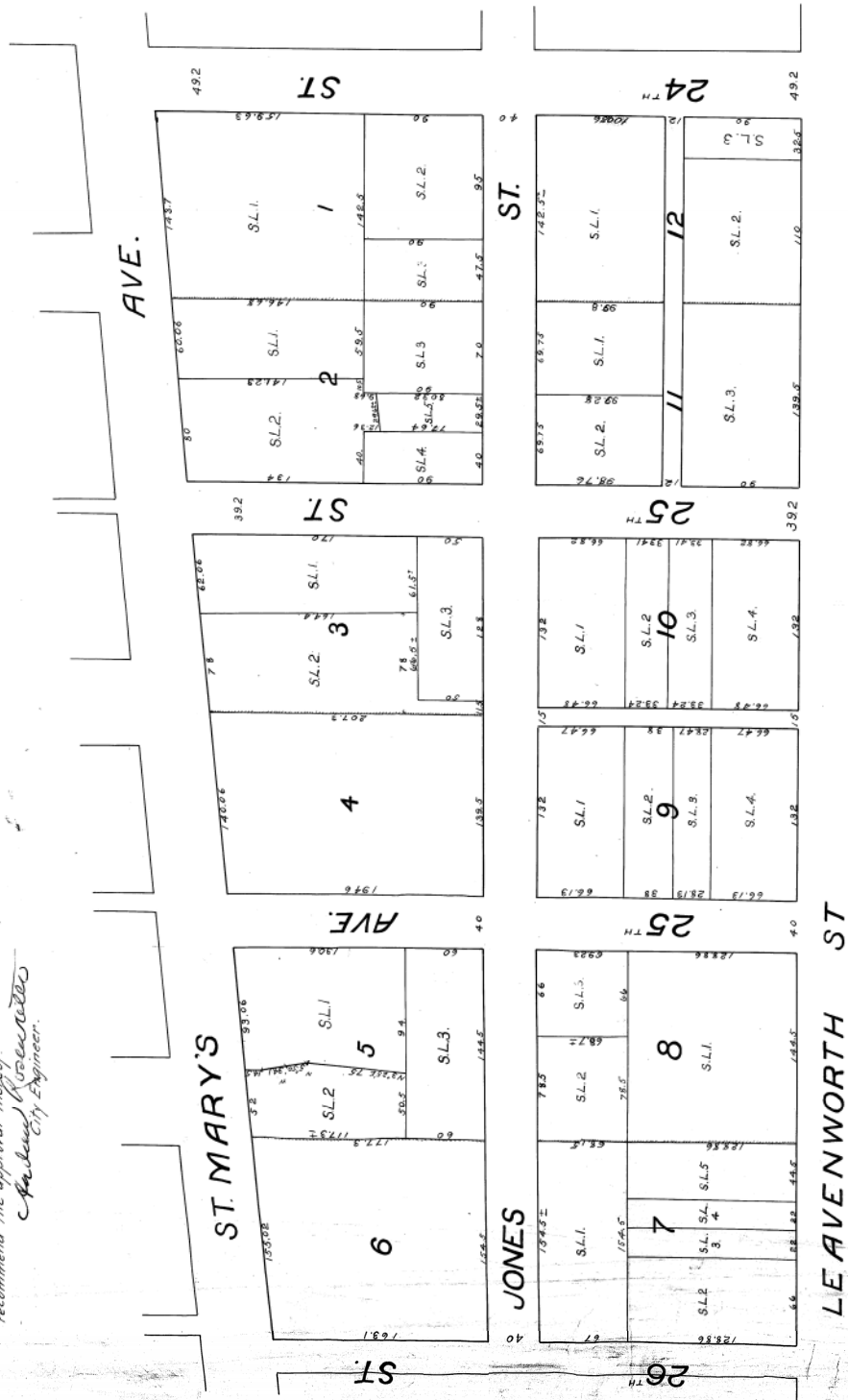
REPLAT JOHNSON'S ADDITION CITY OF OMAHA.

SCALE 50 FT. = 1 IN.

Oct. 23^d 1900

I hereby certify that the within
Replat of Johnson's Addition corresponds
with the actual existing dimensions of
lots, subdivision of lots, and streets, and
recommend the approval thereof.

Andrew K. Kiser
City Engineer.



W. K. Johnson
Myron S. Kew
Dated 10/25/1900
Frank C. Meard

996