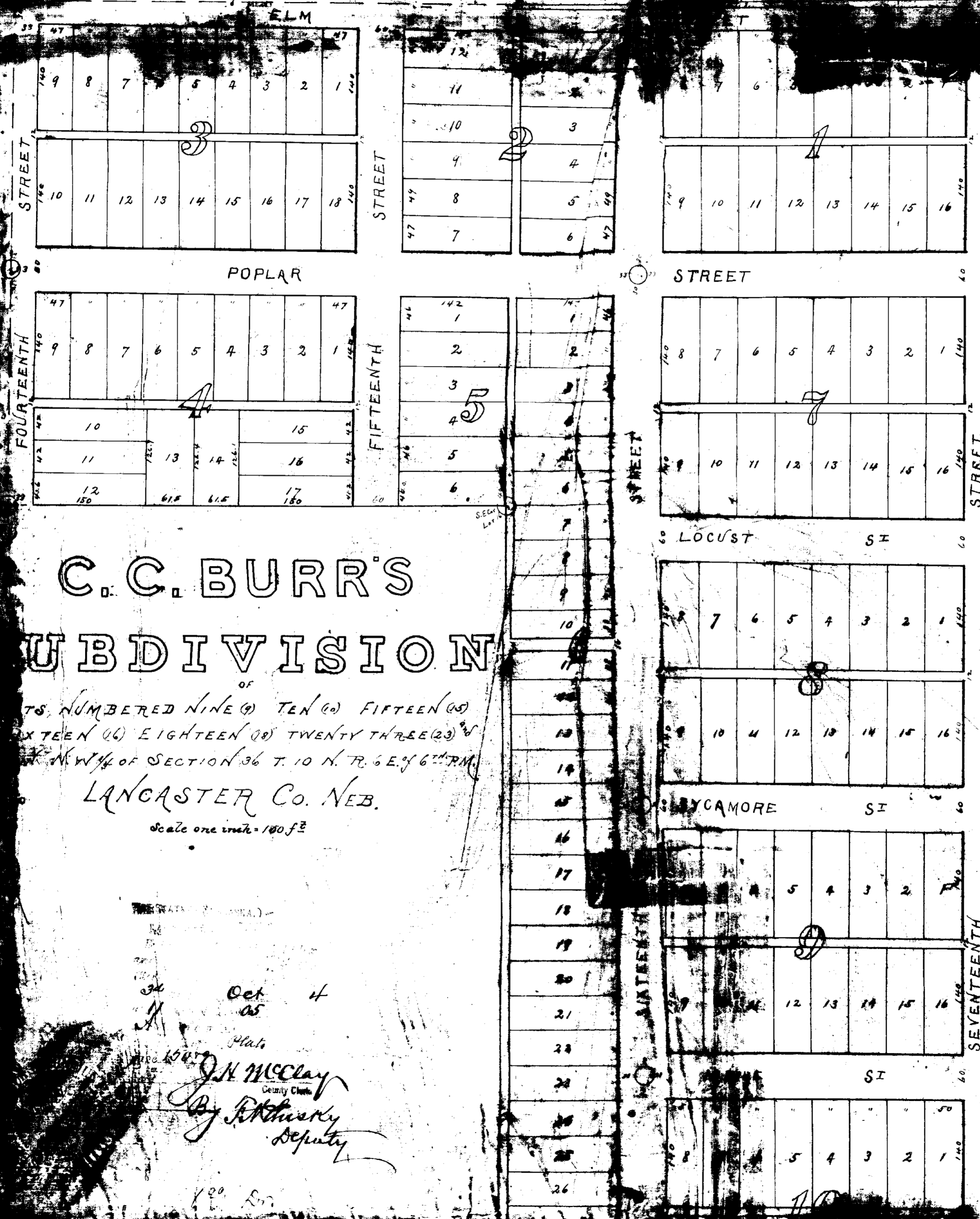


NUMERICAL INDEX, LANCASTER COUNTY
BLOCK NO. CITY OF LINCOLN

GRANTEE



C. C. BURR'S SUBDIVISION

LOTS NUMBERED NINE (9) TEN (10) FIFTEEN (15)
SIXTEEN (16) EIGHTEEN (18) TWENTY THREE (23) &
N.W. 1/4 OF SECTION 36 T. 10 N. R. 6 E. OF 6TH P.M.
LANCASTER CO. NEB.

Scale one inch = 100 f^{ts}

Oct 4
 1884
 J. N. McClay
 County Clerk
 By *[Signature]*
 Deputy

LEGEND.

C. C. Burr's Subdivision consists of the
 South half of the N.W. 1/4 of the N.W. 1/4, the N.E. 1/4
 of the S.W. 1/4 of the N.W. 1/4 and the North half of
 the S.E. 1/4 of the S.W. 1/4 of the N.W. 1/4 of Section
 36 T. 10 N. R. 6 E. of the 6TH P.M. in Lancaster
 County Nebraska. Otherwise known as lots
 numbered Nine (9) Ten (10) Fifteen (15) Sixteen (16)
 Eighteen (18) Twenty three (23) and Twenty six (26)
 in the North West quarter of Section 36 T. 10 N.
 R. 6 E. as shown by plat in Book D of deeds
 in County Clerk's office of said County at
 page 347
 The survey of this Subdivision is based on the
 line from the N.W. corner to the West quarter
 corner of said Section 36 North & South Streets
 are parallel with East & West streets are at
 right angles to this line.
 The Streets alleys & lots have dimensions as
 indicated in feet and decimals by red figures
 on this plat.
 Measurements were made with a steel tape.
 Oak stakes are driven to the ground at the front
 corners of all lots & at the alley corners on
 the block lines.
 Stones are set at points marked thus \odot on the plat.
 Oct. 3 1884.
J. P. Mattou

We hereby certify that the foregoing Subdivision
 of the South half of the N.W. 1/4 of the N.W. 1/4, the N.E. 1/4
 of the S.W. 1/4 of the N.W. 1/4 and the North half of the S.E. 1/4
 of the S.W. 1/4 of the N.W. 1/4 of Section 36 T. 10 N. R. 6 E.
 of the 6TH P.M. in Lancaster County Nebraska
 Otherwise known as lots numbered Nine (9) Ten
 Fifteen (15) Sixteen (16) Eighteen (18) Twenty three
 (23) and Twenty six (26) in the North West quarter of
 Section 36 T. 10 N. R. 6 E. as shown by plat in County
 Clerk's office of said county at page 347
 appears on this plat is with the free consent
 in accordance with the desire of the undivided
 owners & proprietors.
 Signed this 3rd day of October A.D. 1884
 In presence of
 B. F. Burr Carlos C. Burr
 Mary E. Burr

The State of Nebraska
 Lancaster County ss On this 3rd day
 of October A.D. 1884; before me the subscriber
 a Notary Public, duly commissioned & qualified
 for & residing in said County personally came
 Carlos C. Burr & Mary E. Burr his wife to me
 known to be the identical persons who executed
 the foregoing plat & certificate and they ack-
 nowledged the same to be their voluntary act &
 deed.
 Witness my hand and Notary Seal at Lincoln
 in said county the day & year last above written
 B. F. Burr
 Notary Public