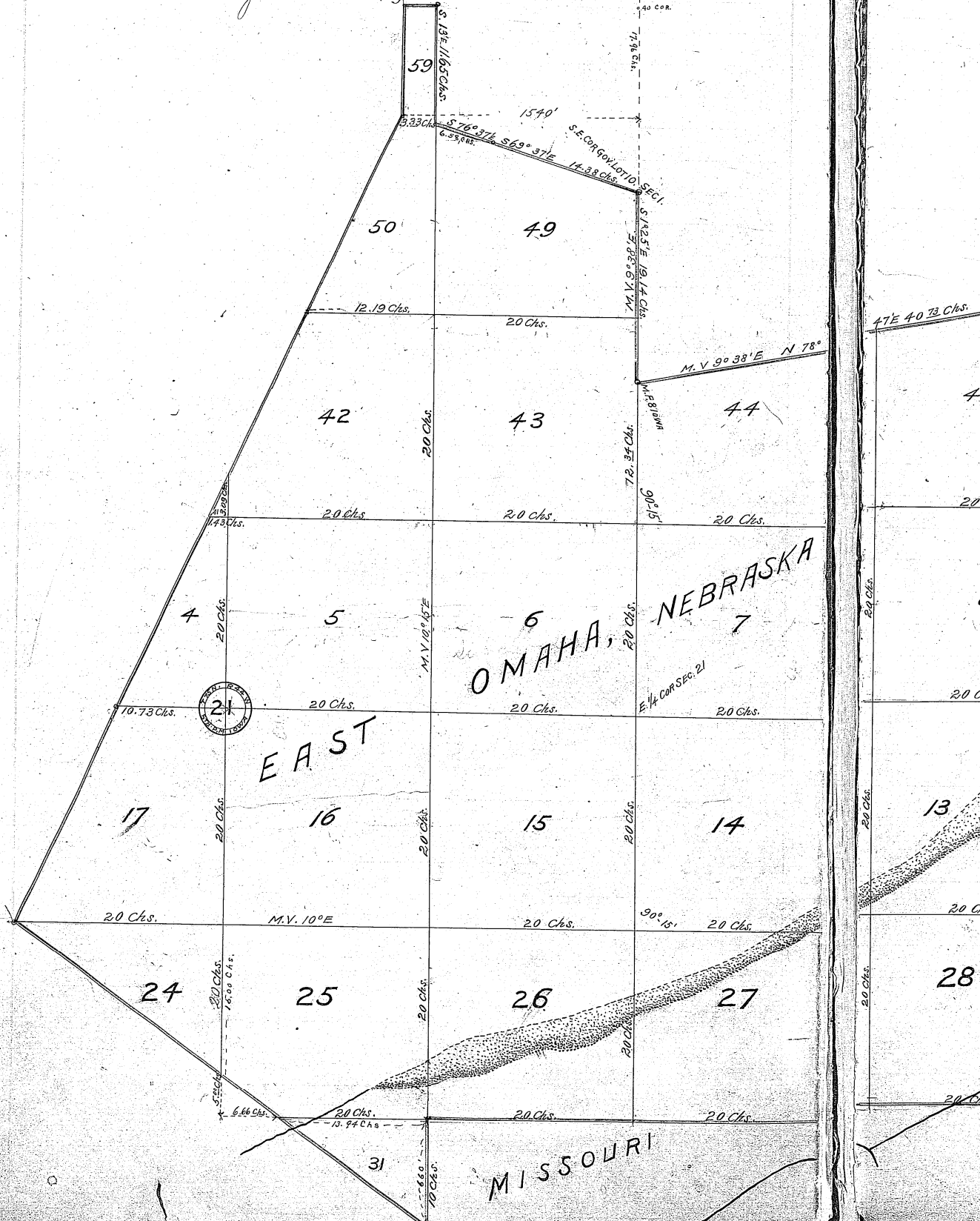




East Omaha Land Co.  
To  
Whom it may concern.



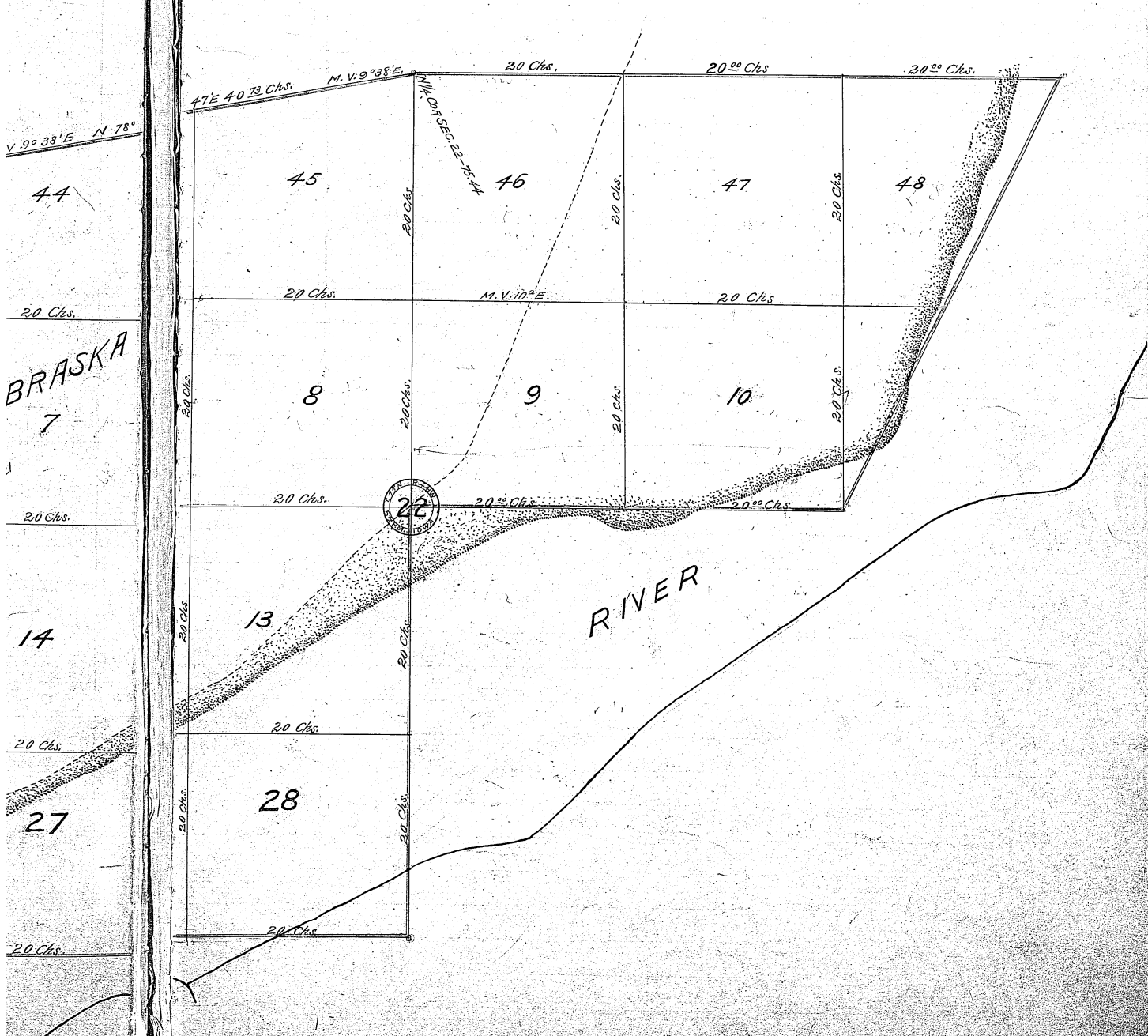
EAST

OMAHA, NEBRASKA

MISSOURI

MAP  
 SHOWING PROPERTY OF EAST OMAHA LAND CO.  
 OF  
 OMAHA, NEBRASKA.

SCALE: 8 Chains to 1 INCH.



Omaha, Nebraska.

Thereby certify that the tracing upon which this certified statement is written correctly represents the out boundaries and sub-divisions of the lands of the east Omaha Land Co; according to surveys made by Engineers in the employ of said Company and according to plats, descriptions & field notes, furnished by said company. Said surveys were made during the months of February, July and October A.D. 1887, and October, November and December A.D. 1890.

I also certify that the Missouri River line as shown on said tracing surveyed by the engineers of the said East Omaha Land Company, in October 1892 is correct, and that the inter-state boundary line; as decided by the United States Supreme Court is hereon correctly represented.

A. B. Ross Chief Engr. East Om. Land Co.

The undersigned hereby certify that the sub-division of the following described real estate to-wit:  
Commencing at a point where the center of section twenty-two (22) township seventy five (75) N. Range forty four (44) west of the 5<sup>th</sup> P. M. Iowa, was originally located by the U. S. Government, thence south forty (40) chains, thence west <sup>sixty</sup> (60) chains, thence south ten (10) chains, thence in a northwesterly direction to the S. W. corner of the N. E. 1/4 of the S. W. 1/4 of section twenty one (21) township seventy five (75) N. range forty four (44) west 5<sup>th</sup> P. M. Iowa, thence northeasterly to a point twenty three and thirty four (23.34) chains west, and thirty one and six hundred (31.06) chains south of the center of section one (1) township fifteen (15) N. range thirteen (13) east 6<sup>th</sup> P. M. Nebraska, thence north, eleven and six hundred (11.06) chains, more or less to the east & west forty line of section 1 township 15 R. 13 E 6<sup>th</sup> P. M. Nebraska, thence east along said line three and thirty five (3.35) chains to the north & south forty line of section 1 township 15

n. R. 13 E 6<sup>th</sup> P. M. Nebraska, thence south thir-  
 teen (13) minutes east eleven & sixty-five (11.65) chains  
 thence south seventy six degrees & thirty seven  
 minutes (76°-37') east, six and fifty eight (6.58)  
 chains, thence south sixty nine degrees and  
 thirty seven minutes (69° 37') east fourteen and  
 thirty eight (14.38) chains to the south east  
 corner of Government lot ten (10) section 1  
 twp 15 N. R. 13 E 6<sup>th</sup> P. M. Nebraska, thence  
 south one degree & twenty five minutes (1° 25')  
 east nineteen and fourteen (19.14) chains thence  
 north seventy eight degrees & forty seven minutes  
 (78° 47') east nineteen and fourteen (19.14) chains  
 thence north seventy eight degrees & forty  
 seven minutes (78° 47') east forty & seventy  
 three (40.73) chains, to the north quarter  
 corner section 22 twp 75 R 44 W 5<sup>th</sup> P. M.  
 Iowa, thence east sixty (60) chains, thence  
 south westerly to the south east corner of  
 the north east quarter of section 22 twp 75  
 N. R. 44 W 5<sup>th</sup> P. M. Iowa, thence west forty  
 (40) chains to place of beginning - as appears on this  
 plat indicated by pink color is with the free  
 consent & in accordance with the desires  
 of the undersigned owners & proprietors.

In presence of

Theodore Miller



East Omaha Land Company  
 George W. Haldrege, President  
 Arthur S. Potter, Secretary

The State of Nebraska } ss. On this 29<sup>th</sup> day of  
 County of Douglas. } April A.D. 1893, before me,  
 a notary Public in and for  
 said County personally came the above named  
 George W. Haldrege, President, and Arthur S.  
 Potter Secretary of, <sup>the East Omaha</sup> Land Company and who are  
 personally known to me to be the identical  
 persons whose names are affixed to the above  
 statement as President & Secretary of said  
 Company and who are personally known to me  
 to be such officers, and they acknowledge the  
 execution of the instrument, to be their volun-

this  
 cents  
 the  
 ding  
 lay of  
 scrip-  
 npany.  
 ouths  
 7, and  
 1890.  
 line  
 of the  
 that  
 d by  
 correct-

division  
 with:  
 etion  
 Range  
 was  
 nt,  
 ty (60)  
 ce in  
 ner of  
 ne (21)  
 A west  
 st and  
 's of  
 7 N.  
 rec.  
 more  
 etion!  
 st.  
 hains  
 twp 15

