

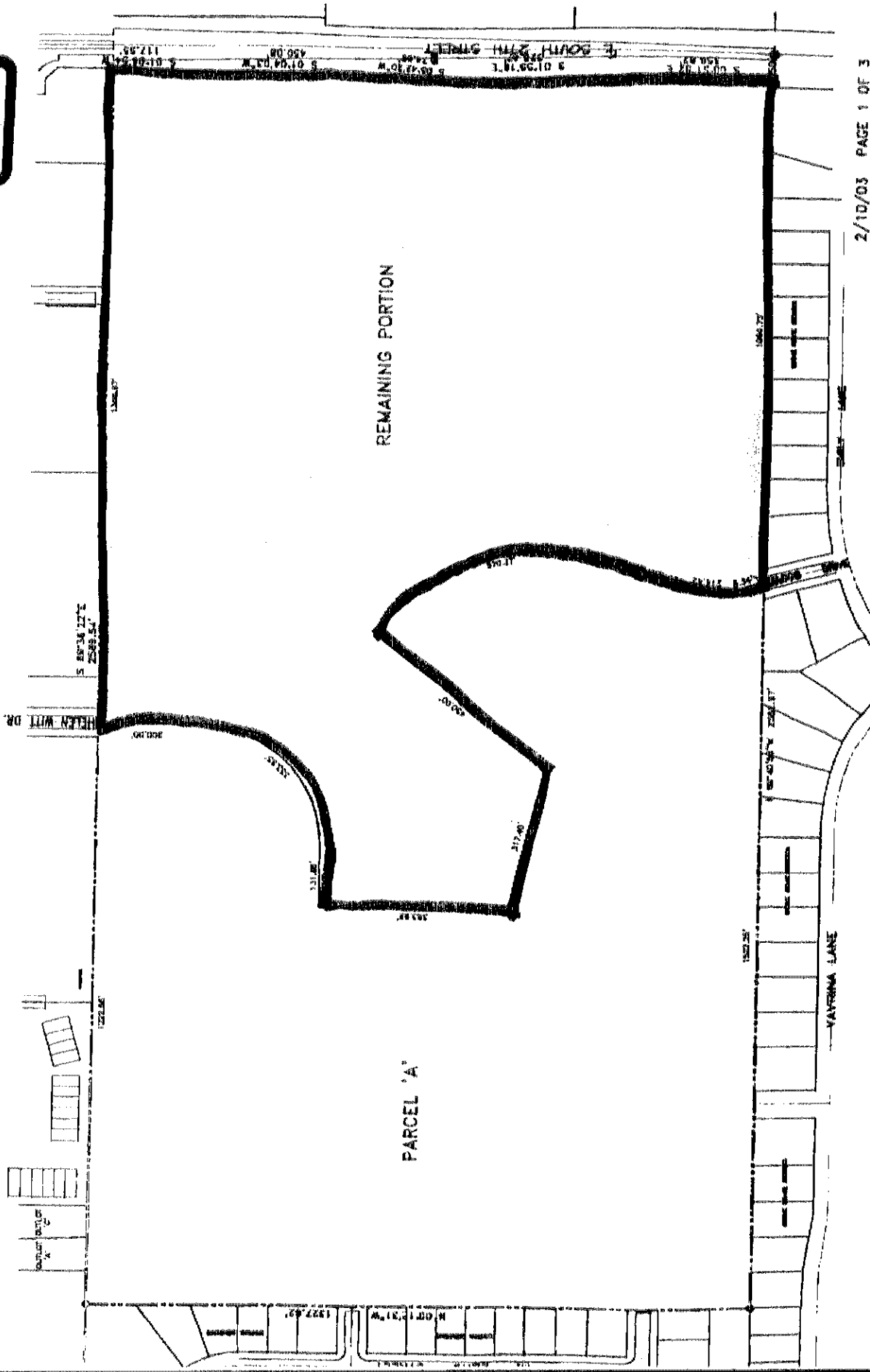


Bank Nebraska, N.A. (a national banking association organized and existing under and by virtue of the United States of America and successor-in-interest to National Bank of Commerce Trust & Saving Association, Lincoln, Nebraska), Trustee.

  
\_\_\_\_\_  
Notary Public



EXHIBIT  
A



## REMAINING PORTION LEGAL DESCRIPTION

---

A portion of Lot 32 of Irregular Tracts located in the Northeast Quarter of Section 24, Township 9 North, Range 6 East of the 6th P.M., Lancaster County, Nebraska, more particularly described as follows:

Beginning at the Northeast corner of Lot 32 Irregular Tract, thence in an Southerly direction along the westerly Right-of-way of South 27th Street and on an assumed bearing of S 01°06'54" W a distance of 117.55 feet, Thence S 01°04'03" W a distance of 450.08 feet, Thence S 05°42'20" W a distance of 74.08 feet; Thence S 01°55'16" E a distance of 326.47 feet; Thence S 00°51'52" E a distance of 356.62 feet to southeast corner of Lot 32 Irregular Tract; Thence along the south line of Lot 32 Irregular Tract on a bearing of N 89°40'59" W a distance of 1060.73 feet; Thence N 15°13'31" W a distance of 8.34 feet; Thence on a curve to the right having a radius of 300.00 feet, a central angle of 41°52'40", on a chord bearing of N 05°42'49" E a chord distance of 214.42 feet to a point of reverse curve; Thence on a curve to the right having a radius of 450.00 feet, a central angle of 78°39'13", on a chord bearing of N12°40'28"W a chord distance of 570.37 feet; Thence S 37°59'56"W a distance of 450.00 feet; Thence N 76°41'15" W a distance of 317.40'; Thence N 00°23'38" E a distance of 383.92 feet; Thence S 89°36'22" E a distance of 131.66 feet to a point of curvature; Thence on a curve to the left having a radius of 250.00 feet, a central angle of 90°00'00", on a chord bearing of N 45°23'38" E a chord distance of 353.55 feet to the point of tangency; Thence N 00°23'38" E a distance of 200.00 feet to a point on the North property line of Lot 32 Irregular Tract; Thence S 89°36'22" E a distance of 1366.97 feet to the Northeast corner of Lot 32 Irregular Tract to the Point of Beginning and containing a calculated area of 1,750,442.18 Square Feet or 40.184 acres more or less.

2/10/03