

Sec.5-T8N-R6E

Centerville

Scale: 1 inch = 200 feet

THIS PLAT IS INTENDED TO SHOW AS ACCURATELY AS POSSIBLE THE RELATIONSHIP OF TRACTS OF LAND BUT IS NOT INTENDED TO BE CONSTRUED AS SURVEY ACCURATE IN ANY MANNER.

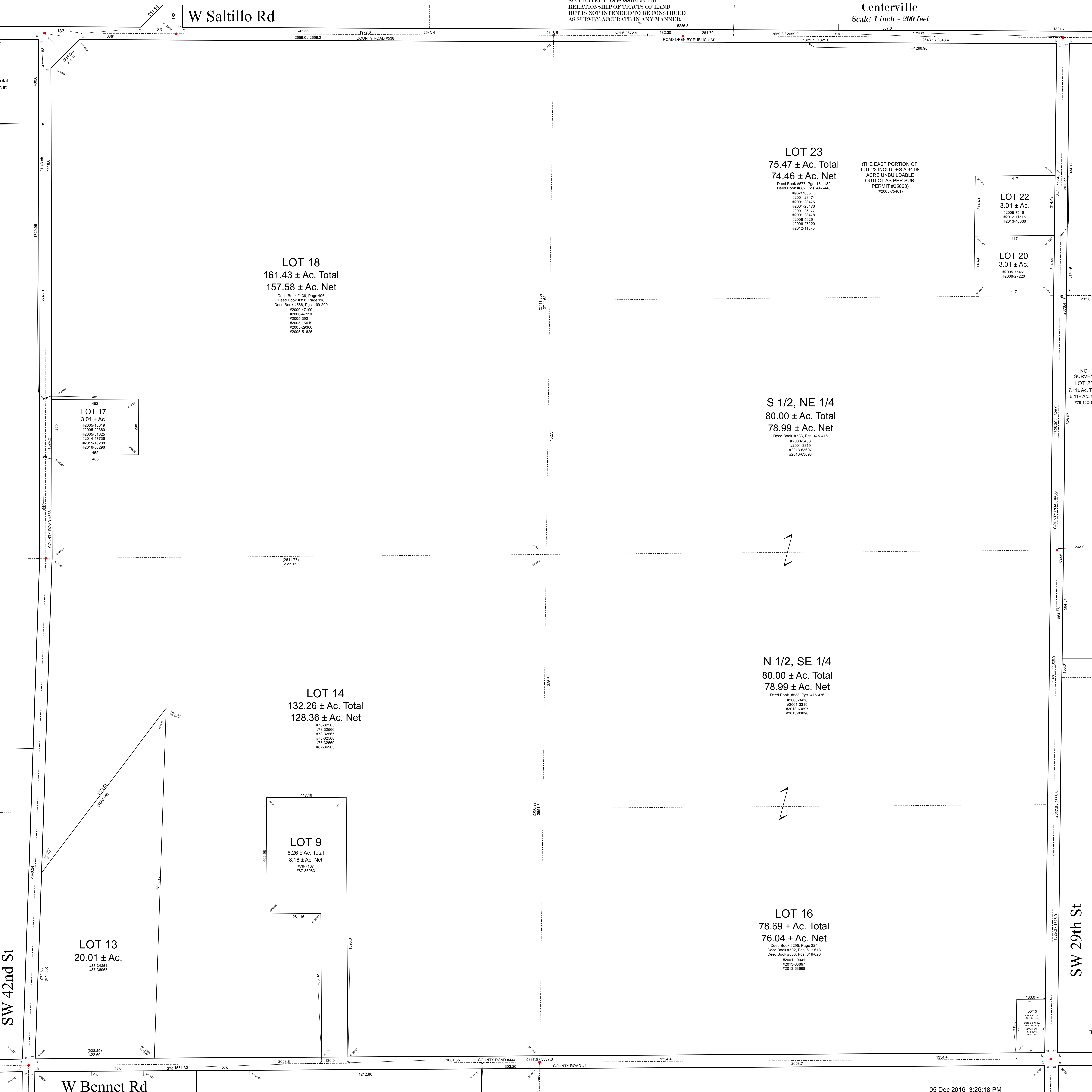
W Saltillo Rd

Total Net

SW 42nd St

W Bennet Rd

SW 29th St



LOT 18
161.43 ± Ac. Total
157.58 ± Ac. Net
Deed Book #139, Page 496
Deed Book #318, Page 118
Deed Book #586, Pgs. 199-200
#2000-47109
#2000-47110
#2005-392
#2005-15019
#2005-29360
#2005-51625

LOT 17
3.01 ± Ac.
#2005-15019
#2005-29360
#2005-51625
#2014-47726
#2015-16226
#2016-52226

LOT 14
132.26 ± Ac. Total
128.36 ± Ac. Net
#78-32565
#78-32566
#78-32567
#78-32568
#78-32569
#87-36963

LOT 9
8.26 ± Ac. Total
8.16 ± Ac. Net
#78-7137
#87-36963

LOT 13
20.01 ± Ac.
#85-34251
#87-36963

LOT 23
75.47 ± Ac. Total
74.46 ± Ac. Net
Deed Book #677, Pgs. 181-182
Deed Book #682, Pgs. 447-448
#96-37835
#2001-23474
#2001-23475
#2001-23476
#2001-23477
#2001-23478
#2006-5929
#2006-27220
#2012-11575

(THE EAST PORTION OF LOT 23 INCLUDES A 34.98 ACRE UNBUILDABLE OUTLOT AS PER SUB. PERMIT #05023) (#2005-75461)

LOT 22
3.01 ± Ac.
#2005-75461
#2012-11575
#2013-46336

LOT 20
3.01 ± Ac.
#2005-75461
#2006-27220

S 1/2, NE 1/4
80.00 ± Ac. Total
78.99 ± Ac. Net
Deed Book #533, Pgs. 475-476
#2000-3438
#2001-3319
#2013-63697
#2013-63698

N 1/2, SE 1/4
80.00 ± Ac. Total
78.99 ± Ac. Net
Deed Book #533, Pgs. 475-476
#2000-3438
#2001-3319
#2013-63697
#2013-63698

LOT 16
78.69 ± Ac. Total
76.04 ± Ac. Net
Deed Book #295, Page 224
Deed Book #502, Pgs. 617-618
Deed Book #683, Pgs. 618-620
#2001-16041
#2013-63697
#2013-63698

NO SURVEY LOT 2: 7.11 ± Ac. T 6.11 ± Ac. T #78-16241