

SCHEWE FARMS REPLAT 2

LOTS 1 & 2, SCHEWE FARMS REPLAT 2, BEING A SMALL SUBDIVISION OF LOT 3, SCHEWE FARMS, A SUBDIVISION AS SURVEYED, PLATTED AND RECORDED IN SARY COUNTY, NEBRASKA.

LOCATED IN:
NW 1/4 SE 1/4 SEC. 30-14-12
NE 1/4 SE 1/4 SEC. 30-14-12
SW 1/4 SE 1/4 SEC. 30-14-12
SE 1/4 SE 1/4 SEC. 30-14-12

FILED SARY COUNTY NEBRASKA
INSTRUMENT NUMBER
2016-32393

12/13/2016 2:40:22 PM

Randy Doolittle
REGISTER OF DEEDS

ZONING NOTE

THIS INSTRUMENT IS FILED UNDER THE ZONING ACT AND IS SUBJECT TO THE ZONING ORDINANCES OF THE CITY OF PAVILLION, NEBRASKA. THE CITY ENGINEER HAS REVIEWED THIS INSTRUMENT AND HAS DETERMINED THAT IT IS IN ACCORDANCE WITH THE ZONING ORDINANCES OF THE CITY OF PAVILLION, NEBRASKA. THE CITY ENGINEER'S REVIEW IS LIMITED TO THE TECHNICAL ASPECTS OF THE INSTRUMENT AND DOES NOT CONSTITUTE AN ENDORSEMENT OR GUARANTEE OF THE ACCURACY OF THE INFORMATION CONTAINED HEREIN. THE CITY ENGINEER'S REVIEW IS LIMITED TO THE TECHNICAL ASPECTS OF THE INSTRUMENT AND DOES NOT CONSTITUTE AN ENDORSEMENT OR GUARANTEE OF THE ACCURACY OF THE INFORMATION CONTAINED HEREIN.

SECTION CORNER TIES

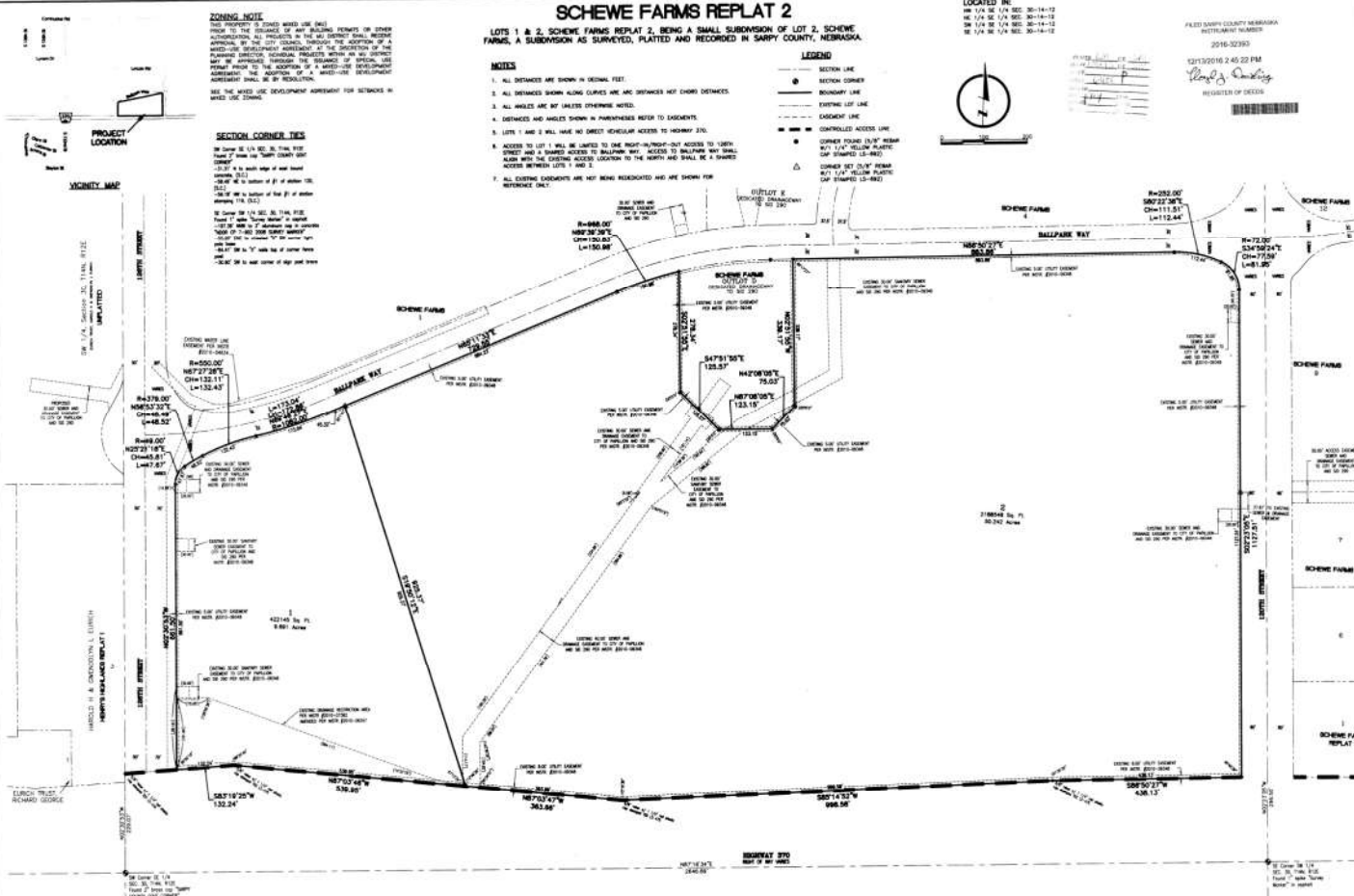
ON CORNER OF 1/4 SEC. 30-14-12, T12N, R12E, S47°12'30"W, DIST. 132.24' TO CORNER OF 1/4 SEC. 30-14-12, T12N, R12E, S47°12'30"W, DIST. 132.24'.
ON CORNER OF 1/4 SEC. 30-14-12, T12N, R12E, S47°12'30"W, DIST. 132.24' TO CORNER OF 1/4 SEC. 30-14-12, T12N, R12E, S47°12'30"W, DIST. 132.24'.
ON CORNER OF 1/4 SEC. 30-14-12, T12N, R12E, S47°12'30"W, DIST. 132.24' TO CORNER OF 1/4 SEC. 30-14-12, T12N, R12E, S47°12'30"W, DIST. 132.24'.

NOTES

1. ALL DISTANCES ARE SHOWN IN DECIMAL FEET.
2. ALL WALLS ARE NOT SHOWN OTHERWISE NOTED.
3. LOTS 1 AND 2 WILL HAVE NO DIRECT SCHEDULED ACCESS TO HIGHWAY 210.
4. ACCESS TO LOT 1 WILL BE LIMITED TO ONE RIGHT-IN/RIGHT-OUT ACCESS TO HIGHWAY 210 FROM THE EAST AND ACCESS TO BALDWIN WAY FROM THE WEST.
5. ACCESS TO LOT 2 WILL BE LIMITED TO ONE RIGHT-IN/RIGHT-OUT ACCESS TO HIGHWAY 210 FROM THE EAST AND ACCESS TO BALDWIN WAY FROM THE WEST.
6. ACCESS TO LOT 1 WILL BE LIMITED TO ONE RIGHT-IN/RIGHT-OUT ACCESS TO HIGHWAY 210 FROM THE EAST AND ACCESS TO BALDWIN WAY FROM THE WEST.
7. ALL EXISTING EASEMENTS ARE NOT BEING RECORDED AND ARE SHOWN FOR REFERENCE ONLY.

LEGEND

- SECTION LINE
- SECTION CORNER
- BOUNDARY LINE
- FORMER LOT LINE
- EXISTING LOT LINE
- EXISTING EASEMENT
- CONTROLLED ACCESS LINE
- CORNER POINT (1/4" REBAR OR 1/4" YELLOW PLASTIC OR STAMPED 15-942)
- CORNER SET BACK MARK (1/4" YELLOW PLASTIC OR STAMPED 15-942)



SARY COUNTY TREASURER'S CERTIFICATE

I HEREBY CERTIFY THAT I HAVE MADE A RECAPITULATION OF THE TAXES DUE ON THE LAND DESCRIBED IN THIS INSTRUMENT AND THAT THE SAME ARE CORRECTLY STATED THEREIN. I HAVE ALSO MADE A RECAPITULATION OF THE TAXES PAID ON THE LAND DESCRIBED IN THIS INSTRUMENT AND THAT THE SAME ARE CORRECTLY STATED THEREIN. I HAVE ALSO MADE A RECAPITULATION OF THE TAXES PAID ON THE LAND DESCRIBED IN THIS INSTRUMENT AND THAT THE SAME ARE CORRECTLY STATED THEREIN.

APPROVAL OF PAVILLION CITY PLANNING DIRECTOR

I HEREBY CERTIFY THAT I HAVE REVIEWED THIS INSTRUMENT AND THAT IT IS IN ACCORDANCE WITH THE ZONING ORDINANCES OF THE CITY OF PAVILLION, NEBRASKA. I HAVE ALSO REVIEWED THE INSTRUMENT AND THAT IT IS IN ACCORDANCE WITH THE ZONING ORDINANCES OF THE CITY OF PAVILLION, NEBRASKA. I HAVE ALSO REVIEWED THE INSTRUMENT AND THAT IT IS IN ACCORDANCE WITH THE ZONING ORDINANCES OF THE CITY OF PAVILLION, NEBRASKA.

LAND SURVEYOR'S CERTIFICATE

I HEREBY CERTIFY THAT I HAVE MADE A RECAPITULATION OF THE TAXES DUE ON THE LAND DESCRIBED IN THIS INSTRUMENT AND THAT THE SAME ARE CORRECTLY STATED THEREIN. I HAVE ALSO MADE A RECAPITULATION OF THE TAXES PAID ON THE LAND DESCRIBED IN THIS INSTRUMENT AND THAT THE SAME ARE CORRECTLY STATED THEREIN. I HAVE ALSO MADE A RECAPITULATION OF THE TAXES PAID ON THE LAND DESCRIBED IN THIS INSTRUMENT AND THAT THE SAME ARE CORRECTLY STATED THEREIN.

APPROVAL OF PAVILLION CITY ADMINISTRATOR

I HEREBY CERTIFY THAT I HAVE REVIEWED THIS INSTRUMENT AND THAT IT IS IN ACCORDANCE WITH THE ZONING ORDINANCES OF THE CITY OF PAVILLION, NEBRASKA. I HAVE ALSO REVIEWED THE INSTRUMENT AND THAT IT IS IN ACCORDANCE WITH THE ZONING ORDINANCES OF THE CITY OF PAVILLION, NEBRASKA. I HAVE ALSO REVIEWED THE INSTRUMENT AND THAT IT IS IN ACCORDANCE WITH THE ZONING ORDINANCES OF THE CITY OF PAVILLION, NEBRASKA.

REVIEW BY SARY COUNTY PUBLIC WORKS

I HEREBY CERTIFY THAT I HAVE REVIEWED THIS INSTRUMENT AND THAT IT IS IN ACCORDANCE WITH THE ZONING ORDINANCES OF THE CITY OF PAVILLION, NEBRASKA. I HAVE ALSO REVIEWED THE INSTRUMENT AND THAT IT IS IN ACCORDANCE WITH THE ZONING ORDINANCES OF THE CITY OF PAVILLION, NEBRASKA. I HAVE ALSO REVIEWED THE INSTRUMENT AND THAT IT IS IN ACCORDANCE WITH THE ZONING ORDINANCES OF THE CITY OF PAVILLION, NEBRASKA.

PAVILLION CITY ENGINEER'S CERTIFICATE

I HEREBY CERTIFY THAT I HAVE REVIEWED THIS INSTRUMENT AND THAT IT IS IN ACCORDANCE WITH THE ZONING ORDINANCES OF THE CITY OF PAVILLION, NEBRASKA. I HAVE ALSO REVIEWED THE INSTRUMENT AND THAT IT IS IN ACCORDANCE WITH THE ZONING ORDINANCES OF THE CITY OF PAVILLION, NEBRASKA. I HAVE ALSO REVIEWED THE INSTRUMENT AND THAT IT IS IN ACCORDANCE WITH THE ZONING ORDINANCES OF THE CITY OF PAVILLION, NEBRASKA.

DEDICATION

I HEREBY DEDICATE TO THE PUBLIC THE LAND DESCRIBED IN THIS INSTRUMENT AND THAT THE SAME ARE CORRECTLY STATED THEREIN. I HAVE ALSO DEDICATED THE LAND DESCRIBED IN THIS INSTRUMENT AND THAT THE SAME ARE CORRECTLY STATED THEREIN. I HAVE ALSO DEDICATED THE LAND DESCRIBED IN THIS INSTRUMENT AND THAT THE SAME ARE CORRECTLY STATED THEREIN.

ACKNOWLEDGEMENT OF NOTARY

I HEREBY CERTIFY THAT I HAVE REVIEWED THIS INSTRUMENT AND THAT IT IS IN ACCORDANCE WITH THE ZONING ORDINANCES OF THE CITY OF PAVILLION, NEBRASKA. I HAVE ALSO REVIEWED THE INSTRUMENT AND THAT IT IS IN ACCORDANCE WITH THE ZONING ORDINANCES OF THE CITY OF PAVILLION, NEBRASKA. I HAVE ALSO REVIEWED THE INSTRUMENT AND THAT IT IS IN ACCORDANCE WITH THE ZONING ORDINANCES OF THE CITY OF PAVILLION, NEBRASKA.



FILED	12/13/2016	2:40:22 PM
REGISTER OF DEEDS		
SARY COUNTY, NEBRASKA		

LAMP RYNEARSON & ASSOCIATES
14710 West Dodge Road, Suite 100
Omaha, Nebraska 68134-2027
www.LRA-NE.com
402-496-2488
402-496-2700

SMALL SUBDIVISION
SCHEWE FARMS REPLAT 2 (LOTS 1 AND 2)
PAVILLION, SARY COUNTY, NEBRASKA

2016-32393