

2010-09348

SCHEWE FARMS

Lots 1 through 13 and Outside A through G, SECTION 20, T24N, R12E, being a plat of the Northeast Quarter of Section 20, Township 24 North, Range 12 East of the 9th P.M., Sarpy County, Nebraska, TOGETHER WITH Part of the Northeast Quarter of Section 20, Township 24 North, Range 12 East of the 9th P.M., Sarpy County, Nebraska, AND ALSO TOGETHER WITH the West Half of the Southwest Quarter of Section 20, Township 24 North, Range 12 East of the 9th P.M., Sarpy County, Nebraska, EXCEPT that part taken for Highway Right of Way



LOCKED IN
This instrument is a plat of land and is subject to the provisions of the Nebraska Plat Act, Chapter 79, R.S., which require that the instrument be recorded in the public records of the county in which the land is located within a certain time after recording in the office of the county clerk.

THIS INSTRUMENT HAS BEEN ASSESSED AND LEVIED FOR THE CURRENT YEAR AND NEITHER HAS BEEN PAID. TREASURER'S CERTIFICATION IS ONLY VALID UNTIL DECEMBER 31ST OF THIS YEAR.

SARPY COUNTY TREASURER'S CERTIFICATE
I, **Thomas A. L. Burdick**, Treasurer of Sarpy County, Nebraska, do hereby certify that the amount of \$40.00 has been assessed and levied for the current year and has not been paid.



SARPY COUNTY SURVEYOR'S CERTIFICATE
I, **Thomas A. L. Burdick**, Surveyor of Sarpy County, Nebraska, do hereby certify that the above described land is situated within the boundaries of Sarpy County, Nebraska.

APPROVAL OF CITY OF PAVILLION PLANNING COMMISSION
I, **Thomas A. L. Burdick**, Mayor of the City of Pavillion, Nebraska, do hereby approve this instrument.

CITY ENGINEER'S CERTIFICATE
I, **Thomas A. L. Burdick**, City Engineer of the City of Pavillion, Nebraska, do hereby certify that the above described land is situated within the boundaries of the City of Pavillion, Nebraska.

APPROVAL OF CITY COUNCIL OF PAVILLION
I, **Thomas A. L. Burdick**, Mayor of the City of Pavillion, Nebraska, do hereby approve this instrument.

ACKNOWLEDGMENT OF NOTARIES
I, **Margaret Langman**, Notary Public for the State of Nebraska, do hereby certify that the above described land is situated within the boundaries of Sarpy County, Nebraska.

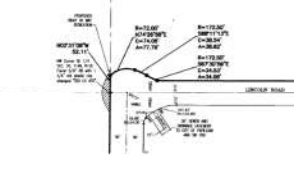


ACKNOWLEDGMENT OF NOTARIES
I, **Elizabeth McCarty**, Notary Public for the State of Nebraska, do hereby certify that the above described land is situated within the boundaries of Sarpy County, Nebraska.



FILED SARPY COUNTY NEBRASKA
INSTRUMENT NUMBER
2010-09348
04/16/2010 11:19:20 AM
Roy J. Runking
REGISTER OF DEEDS

COUNTY **SARPY** STATE **NE**
FEE \$ **40.00**
CHECK OR CASH **40.00**
REFUND CREDIT NONE



NOTES

1. ALL INTERESTS ARE SHOWN BY RECORD.
2. ALL INTERESTS ARE SHOWN BY RECORD.
3. ALL INTERESTS ARE SHOWN BY RECORD.
4. ALL INTERESTS ARE SHOWN BY RECORD.
5. ALL INTERESTS ARE SHOWN BY RECORD.
6. ALL INTERESTS ARE SHOWN BY RECORD.
7. ALL INTERESTS ARE SHOWN BY RECORD.
8. ALL INTERESTS ARE SHOWN BY RECORD.
9. ALL INTERESTS ARE SHOWN BY RECORD.
10. ALL INTERESTS ARE SHOWN BY RECORD.
11. ALL INTERESTS ARE SHOWN BY RECORD.
12. ALL INTERESTS ARE SHOWN BY RECORD.
13. ALL INTERESTS ARE SHOWN BY RECORD.
14. ALL INTERESTS ARE SHOWN BY RECORD.
15. ALL INTERESTS ARE SHOWN BY RECORD.
16. ALL INTERESTS ARE SHOWN BY RECORD.
17. ALL INTERESTS ARE SHOWN BY RECORD.
18. ALL INTERESTS ARE SHOWN BY RECORD.
19. ALL INTERESTS ARE SHOWN BY RECORD.
20. ALL INTERESTS ARE SHOWN BY RECORD.

CENTRALINE CORNER DATA

LINE	BEARING	DISTANCE	COORDINATES
1	N 89° 59' 59" W	100.00	100.00, 0.00
2	S 89° 59' 59" E	100.00	100.00, -100.00
3	S 00° 00' 00" E	100.00	100.00, -200.00
4	N 89° 59' 59" W	100.00	100.00, -300.00
5	N 89° 59' 59" W	100.00	100.00, -400.00
6	N 89° 59' 59" W	100.00	100.00, -500.00
7	N 89° 59' 59" W	100.00	100.00, -600.00
8	N 89° 59' 59" W	100.00	100.00, -700.00
9	N 89° 59' 59" W	100.00	100.00, -800.00
10	N 89° 59' 59" W	100.00	100.00, -900.00
11	N 89° 59' 59" W	100.00	100.00, -1000.00
12	N 89° 59' 59" W	100.00	100.00, -1100.00
13	N 89° 59' 59" W	100.00	100.00, -1200.00
14	N 89° 59' 59" W	100.00	100.00, -1300.00
15	N 89° 59' 59" W	100.00	100.00, -1400.00
16	N 89° 59' 59" W	100.00	100.00, -1500.00
17	N 89° 59' 59" W	100.00	100.00, -1600.00
18	N 89° 59' 59" W	100.00	100.00, -1700.00
19	N 89° 59' 59" W	100.00	100.00, -1800.00
20	N 89° 59' 59" W	100.00	100.00, -1900.00

ZONING
MIXED USE (MU)
This instrument is subject to the provisions of the Nebraska Plat Act, Chapter 79, R.S., which require that the instrument be recorded in the public records of the county in which the land is located within a certain time after recording in the office of the county clerk.

LAND SURVEYOR'S CERTIFICATE
I, **Thomas A. L. Burdick**, Surveyor of Sarpy County, Nebraska, do hereby certify that the above described land is situated within the boundaries of Sarpy County, Nebraska.

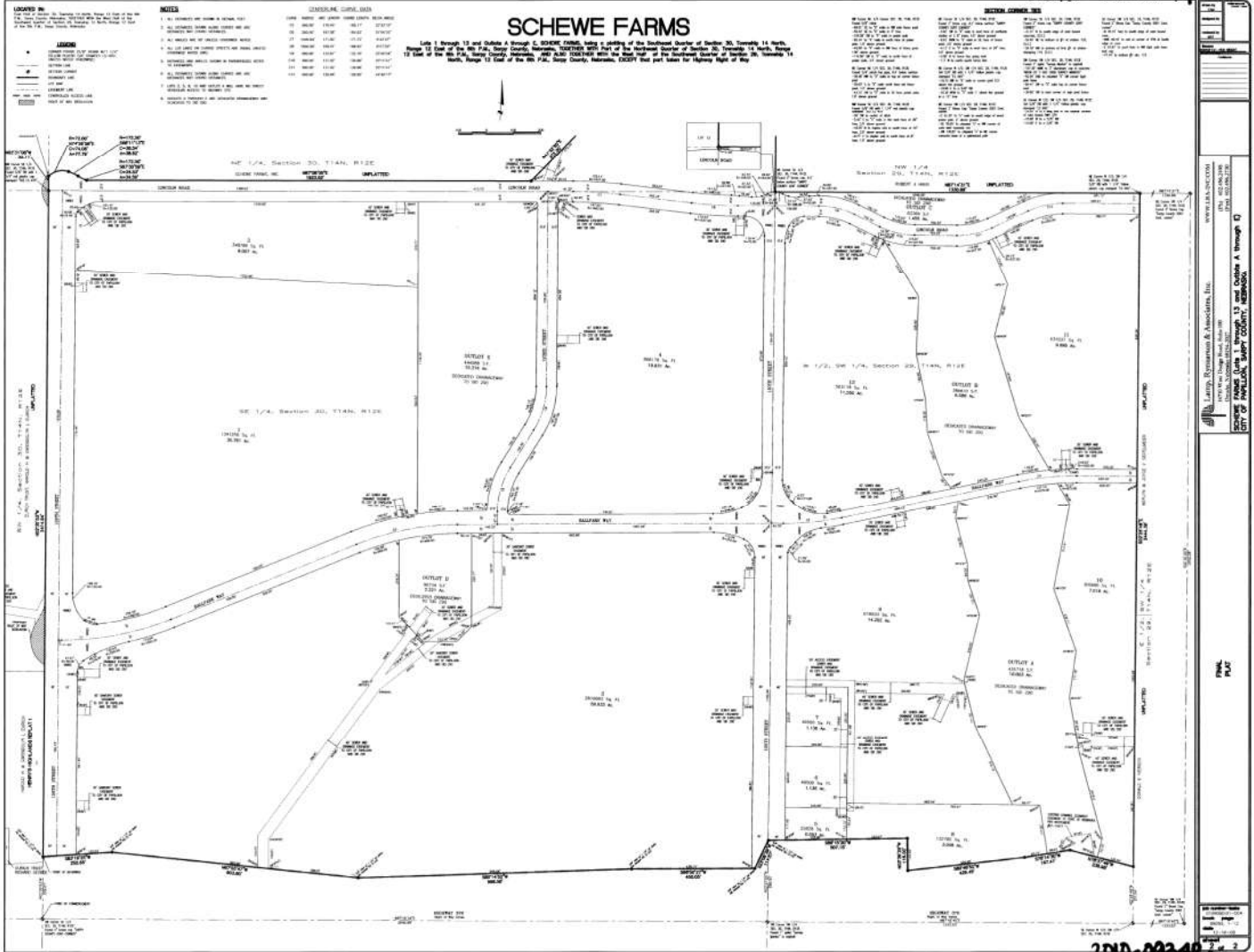
GENERAL NOTES
1. ALL INTERESTS ARE SHOWN BY RECORD.
2. ALL INTERESTS ARE SHOWN BY RECORD.
3. ALL INTERESTS ARE SHOWN BY RECORD.
4. ALL INTERESTS ARE SHOWN BY RECORD.
5. ALL INTERESTS ARE SHOWN BY RECORD.
6. ALL INTERESTS ARE SHOWN BY RECORD.
7. ALL INTERESTS ARE SHOWN BY RECORD.
8. ALL INTERESTS ARE SHOWN BY RECORD.
9. ALL INTERESTS ARE SHOWN BY RECORD.
10. ALL INTERESTS ARE SHOWN BY RECORD.
11. ALL INTERESTS ARE SHOWN BY RECORD.
12. ALL INTERESTS ARE SHOWN BY RECORD.
13. ALL INTERESTS ARE SHOWN BY RECORD.
14. ALL INTERESTS ARE SHOWN BY RECORD.
15. ALL INTERESTS ARE SHOWN BY RECORD.
16. ALL INTERESTS ARE SHOWN BY RECORD.
17. ALL INTERESTS ARE SHOWN BY RECORD.
18. ALL INTERESTS ARE SHOWN BY RECORD.
19. ALL INTERESTS ARE SHOWN BY RECORD.
20. ALL INTERESTS ARE SHOWN BY RECORD.

2010-09348

PLAT
2

PLAT
2

2010-09348 A



Surveyed and Platted by
 Larry W. Williams & Associates, Inc.
 1200 S. 10th Street, Suite 100
 Independence, MO 64220
 City of Independence, Cass County, Missouri

PLAT

2010-09348 A