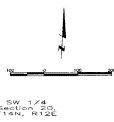


2010-09348

# SCHEWE FARMS

Lots 1 through 13 and Outside A through C, SCHEWE FARMS, being a plat of the Southeast Quarter of Section 30, Township 14 North, Range 12 East of the 9th P.M., Sarpy County, Nebraska, TOGETHER WITH Part of the Northeast Quarter of Section 30, Township 14 North, Range 12 East of the 9th P.M., Sarpy County, Nebraska, AND ALSO TOGETHER with the West half of the Southeast Quarter of Section 26, Township 14 North, Range 12 East of the 9th P.M., Sarpy County, Nebraska, EXCEPT that part taken for Highway Right of Way



LOCATED IN

SECTION CORNER

ADJACENT CORNER

SECTION CENTER

ADJACENT CORNER

SECTION CORNER

ADJACENT CORNER

SECTION CORNER

ADJACENT CORNER

ALL TAXES ASSESSED AND PAID UNTIL THE END OF THE CURRENT YEAR ARE NEITHER DELINQUENT NOR PAID. TREASURER'S CERTIFICATION IS ONLY VALID UNTIL DECEMBER 31ST OF THIS YEAR.

## SARPY COUNTY TREASURER'S CERTIFICATE

I HEREBY CERTIFY THAT ALL TAXES ASSESSED AND PAID UNTIL THE END OF THE CURRENT YEAR ARE NEITHER DELINQUENT NOR PAID. TREASURER'S CERTIFICATION IS ONLY VALID UNTIL DECEMBER 31ST OF THIS YEAR.

*5 April*



## SARPY COUNTY SURVEYOR'S CERTIFICATE

I HEREBY CERTIFY THAT THE ABOVE DESCRIBED PROPERTY IS THE PROPERTY OF SCHEWE FARMS, INC. AS SHOWN ON THE PLAT HEREON. I HAVE BEEN AWARE OF THE LOCATION OF THE PROPERTY SINCE I WAS FIRST EMPLOYED BY THE SURVEYOR GENERAL OF SARPY COUNTY, NEBRASKA, IN 1983.

*23 March*

## APPROVAL OF CITY OF PAVILLION PLANNING COMMISSION

I HEREBY APPROVE THE ABOVE DESCRIBED PROPERTY FOR THE CITY OF PAVILLION.

*12 April*

## CITY ENGINEER'S CERTIFICATE

I HEREBY CERTIFY THAT THE ABOVE DESCRIBED PROPERTY IS THE PROPERTY OF SCHEWE FARMS, INC. AS SHOWN ON THE PLAT HEREON. I HAVE BEEN AWARE OF THE LOCATION OF THE PROPERTY SINCE I WAS FIRST EMPLOYED BY THE SURVEYOR GENERAL OF SARPY COUNTY, NEBRASKA, IN 1983.

*12 April*

## APPROVAL OF CITY COUNCIL OF PAVILLION

I HEREBY APPROVE THE ABOVE DESCRIBED PROPERTY FOR THE CITY OF PAVILLION.

*14 April*

DESCRIPTION: THE PROPERTY HEREIN DESCRIBED IS THE PROPERTY OF SCHEWE FARMS, INC. AS SHOWN ON THE PLAT HEREON. I HAVE BEEN AWARE OF THE LOCATION OF THE PROPERTY SINCE I WAS FIRST EMPLOYED BY THE SURVEYOR GENERAL OF SARPY COUNTY, NEBRASKA, IN 1983.

**Witness my hand and the seal of the County of Sarpy, Nebraska, this 23rd day of March, 2010.**

**Witness my hand and the seal of the County of Sarpy, Nebraska, this 12th day of April, 2010.**

**Witness my hand and the seal of the County of Sarpy, Nebraska, this 14th day of April, 2010.**

**Witness my hand and the seal of the County of Sarpy, Nebraska, this 12th day of April, 2010.**

**Witness my hand and the seal of the County of Sarpy, Nebraska, this 12th day of April, 2010.**

ACKNOWLEDGEMENT OF NOTARIES

**Witness my hand and the seal of the County of Sarpy, Nebraska, this 23rd day of March, 2010.**

**Witness my hand and the seal of the County of Sarpy, Nebraska, this 12th day of April, 2010.**

**Witness my hand and the seal of the County of Sarpy, Nebraska, this 14th day of April, 2010.**

**Witness my hand and the seal of the County of Sarpy, Nebraska, this 12th day of April, 2010.**

**Witness my hand and the seal of the County of Sarpy, Nebraska, this 12th day of April, 2010.**

## NOTES

1. ALL BOUNDARIES ARE SHOWN IN COLOUR FEET.
2. ALL BOUNDARIES ARE SHOWN IN COLOUR FEET.
3. ALL BOUNDARIES ARE SHOWN IN COLOUR FEET.
4. ALL BOUNDARIES ARE SHOWN IN COLOUR FEET.
5. ALL BOUNDARIES ARE SHOWN IN COLOUR FEET.
6. ALL BOUNDARIES ARE SHOWN IN COLOUR FEET.
7. ALL BOUNDARIES ARE SHOWN IN COLOUR FEET.
8. ALL BOUNDARIES ARE SHOWN IN COLOUR FEET.
9. ALL BOUNDARIES ARE SHOWN IN COLOUR FEET.
10. ALL BOUNDARIES ARE SHOWN IN COLOUR FEET.

## CENTERS LINE CURVE DATA

CURVE	BEARING	ARC LENGTH	CHORD LENGTH	CHORD BEARING
01	102.000°	178.407'	180.177'	325.057°
02	102.000°	265.000'	265.000'	270.000°
03	102.000°	178.407'	177.772'	63.236°
04	102.000°	104.647'	104.647'	63.236°
05	102.000°	104.647'	104.647'	63.236°
06	102.000°	104.647'	104.647'	63.236°
07	102.000°	104.647'	104.647'	63.236°
08	102.000°	104.647'	104.647'	63.236°
09	102.000°	104.647'	104.647'	63.236°
10	102.000°	104.647'	104.647'	63.236°
11	102.000°	104.647'	104.647'	63.236°
12	102.000°	104.647'	104.647'	63.236°
13	102.000°	104.647'	104.647'	63.236°
14	102.000°	104.647'	104.647'	63.236°
15	102.000°	104.647'	104.647'	63.236°
16	102.000°	104.647'	104.647'	63.236°
17	102.000°	104.647'	104.647'	63.236°
18	102.000°	104.647'	104.647'	63.236°
19	102.000°	104.647'	104.647'	63.236°
20	102.000°	104.647'	104.647'	63.236°

## LAND SURVEYOR'S CERTIFICATE

I HEREBY CERTIFY THAT THE ABOVE DESCRIBED PROPERTY IS THE PROPERTY OF SCHEWE FARMS, INC. AS SHOWN ON THE PLAT HEREON. I HAVE BEEN AWARE OF THE LOCATION OF THE PROPERTY SINCE I WAS FIRST EMPLOYED BY THE SURVEYOR GENERAL OF SARPY COUNTY, NEBRASKA, IN 1983.

**Witness my hand and the seal of the County of Sarpy, Nebraska, this 23rd day of March, 2010.**

**Witness my hand and the seal of the County of Sarpy, Nebraska, this 12th day of April, 2010.**

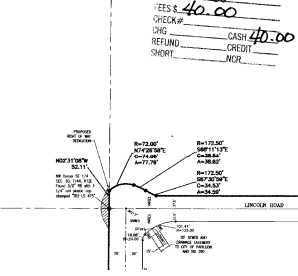
**Witness my hand and the seal of the County of Sarpy, Nebraska, this 14th day of April, 2010.**

**Witness my hand and the seal of the County of Sarpy, Nebraska, this 12th day of April, 2010.**

**Witness my hand and the seal of the County of Sarpy, Nebraska, this 12th day of April, 2010.**

FILED SARPY COUNTY NEBRASKA  
INSTRUMENT NUMBER  
2010-09348  
04/16/2010 11:19:20 AM  
REGISTER OF DEEDS

COUNTY: SARPY COUNTY NEBRASKA  
VERIFY: [initials] S, C, E, R  
FEES: \$40.00  
CHECK: [initials]  
REFUND: CASH 40.00  
SHORT: [initials]



NE 1/4, Section 30, T14N, R12E

SCHEWE FARMS, INC.

NE 1/4, Section 30, T14N, R12E

NE 1/4, Section 30, T14N, R12E

ZONING: MIXED-FAMILY RESIDENTIAL (R-4)

MIXED USE (MU)

NEBRASKA PROFESSIONAL SURVEYORS BOARD

NEBRASKA PROFESSIONAL ENGINEERS BOARD

NEBRASKA PROFESSIONAL LAND SURVEYORS BOARD

NEBRASKA PROFESSIONAL ARCHITECTS BOARD

NEBRASKA PROFESSIONAL PLANNERS BOARD

NEBRASKA PROFESSIONAL ACCOUNTANTS BOARD

NEBRASKA PROFESSIONAL SOCIAL WORKERS BOARD

NEBRASKA PROFESSIONAL NURSES BOARD

NEBRASKA PROFESSIONAL PHARMACEUTICAL MANAGERS BOARD

NEBRASKA PROFESSIONAL VETERINARIAN BOARD

NEBRASKA PROFESSIONAL JUDICIAL OFFICERS BOARD

NEBRASKA PROFESSIONAL POLICE OFFICERS BOARD

NEBRASKA PROFESSIONAL FIRE FIGHTERS BOARD

NEBRASKA PROFESSIONAL CHINESE MEDICINE BOARD

NEBRASKA PROFESSIONAL DENTISTRY BOARD

NEBRASKA PROFESSIONAL OPTOMETRY BOARD

NEBRASKA PROFESSIONAL PODIATRY BOARD

NEBRASKA PROFESSIONAL SPEECH LANGUAGE PATHOLOGISTS BOARD

NEBRASKA PROFESSIONAL OCCUPATIONAL THERAPISTS BOARD

NEBRASKA PROFESSIONAL AUDIOVISUAL COMMUNICATIONS BOARD

NEBRASKA PROFESSIONAL ART THERAPISTS BOARD

NEBRASKA PROFESSIONAL COUNSELORS BOARD

NEBRASKA PROFESSIONAL EDUCATION LEADERSHIP BOARD

NEBRASKA PROFESSIONAL HUMAN RESOURCES BOARD

NEBRASKA PROFESSIONAL INTERIOR DESIGN BOARD

NEBRASKA PROFESSIONAL JOURNALISM BOARD

NEBRASKA PROFESSIONAL LIBRARIAN BOARD

NEBRASKA PROFESSIONAL MANAGEMENT BOARD

NEBRASKA PROFESSIONAL MARKETING BOARD

NEBRASKA PROFESSIONAL PUBLIC RELATIONS BOARD

NEBRASKA PROFESSIONAL RECREATION BOARD

NEBRASKA PROFESSIONAL SECURITY BOARD

NEBRASKA PROFESSIONAL TRANSPORTATION BOARD

NEBRASKA PROFESSIONAL TRAVEL BOARD

NEBRASKA PROFESSIONAL VISUAL ARTS BOARD

NEBRASKA PROFESSIONAL WEDDING BOARD

NEBRASKA PROFESSIONAL YOUTH SERVICES BOARD

NEBRASKA PROFESSIONAL ZOOLOGICAL BOARD

NEBRASKA PROFESSIONAL ZOOLOGICAL BOARD

NEBRASKA PROFESSIONAL ZOOLOGICAL BOARD

2010-09348

2010-09348 A

# SCHEWE FARMS

Lots 1 through 11 and Outlets A through G, SCHEWE FARMS, being a portion of the Southeast Quarter of Section 30, Township 14 North, Range 13 East of the 9th P.M., Sarpy County, Nebraska, TOGETHER WITH Part of the Northeast Quarter of Section 30, Township 14 North, Range 13 East of the 9th P.M., Sarpy County, Nebraska, AND ALSO TOGETHER WITH the West Half of the Southwest Quarter of Section 29, Township 14 North, Range 12 East of the 9th P.M., Sarpy County, Nebraska, EXCEPT that part taken for Highway Right of Way

**NOTES**

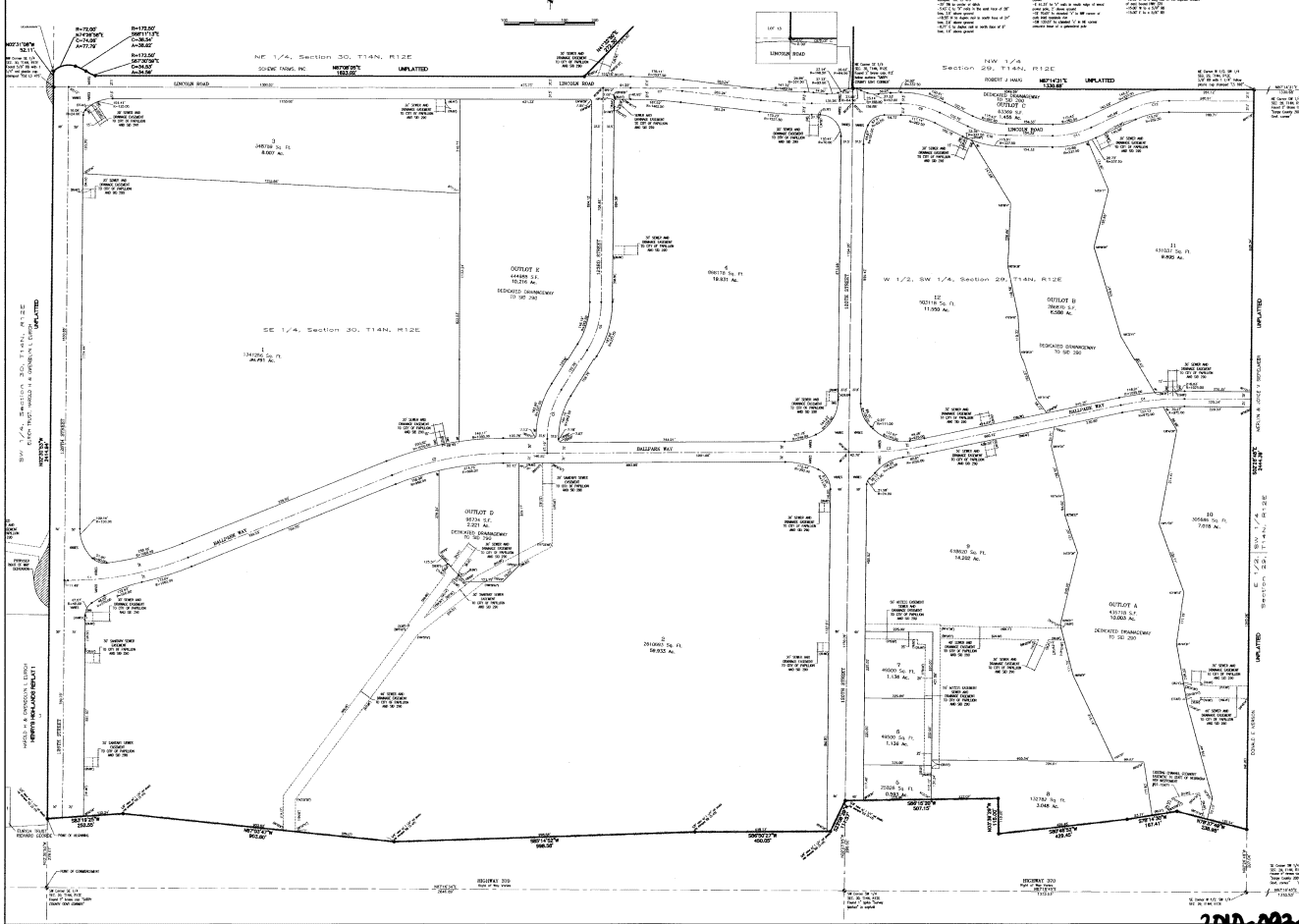
1. ALL DISTANCES ARE SHOWN IN FEET AND INCHES.
2. ALL DISTANCES GIVEN IN FEET AND INCHES ARE TO BE CONSIDERED AS MEASUREMENTS TO THE CENTER OF THE ROAD.
3. ALL DISTANCES ARE TO BE MEASURED ALONG THE CENTER LINE OF THE ROAD.
4. ALL DISTANCES ARE TO BE MEASURED ALONG THE CENTER LINE OF THE ROAD.
5. ALL DISTANCES ARE TO BE MEASURED ALONG THE CENTER LINE OF THE ROAD.
6. ALL DISTANCES ARE TO BE MEASURED ALONG THE CENTER LINE OF THE ROAD.
7. ALL DISTANCES ARE TO BE MEASURED ALONG THE CENTER LINE OF THE ROAD.
8. ALL DISTANCES ARE TO BE MEASURED ALONG THE CENTER LINE OF THE ROAD.
9. ALL DISTANCES ARE TO BE MEASURED ALONG THE CENTER LINE OF THE ROAD.
10. ALL DISTANCES ARE TO BE MEASURED ALONG THE CENTER LINE OF THE ROAD.

**GENERAL CURVE DATA**

STATION	PI	PC	PT	TS	SC	LC	EA	EB	EC	ED	EA	EB	EC	ED
0+00	10+00	10+00	10+00	10+00	10+00	10+00	10+00	10+00	10+00	10+00	10+00	10+00	10+00	10+00

**SECTION CORNER DATA**

SECTION CORNER	STATION	PC	PT	TS	SC	LC	EA	EB	EC	ED
SECTION CORNER 1	0+00	10+00	10+00	10+00	10+00	10+00	10+00	10+00	10+00	10+00



**PLAT**

LARRY W. RYAN & ASSOCIATES, INC.  
 1000 N. 10th Street, Omaha, Nebraska 68102  
 Phone: (402) 442-1234  
 Fax: (402) 442-1235

DATE: 10/15/2010

PROJECT: SCHEWE FARMS

SCALE: AS SHOWN

BY: LARRY W. RYAN

CHECKED: JEFFREY L. RYAN

APPROVED: LARRY W. RYAN

STATE OF NEBRASKA  
 COUNTY OF SARPY

2010-09348 A