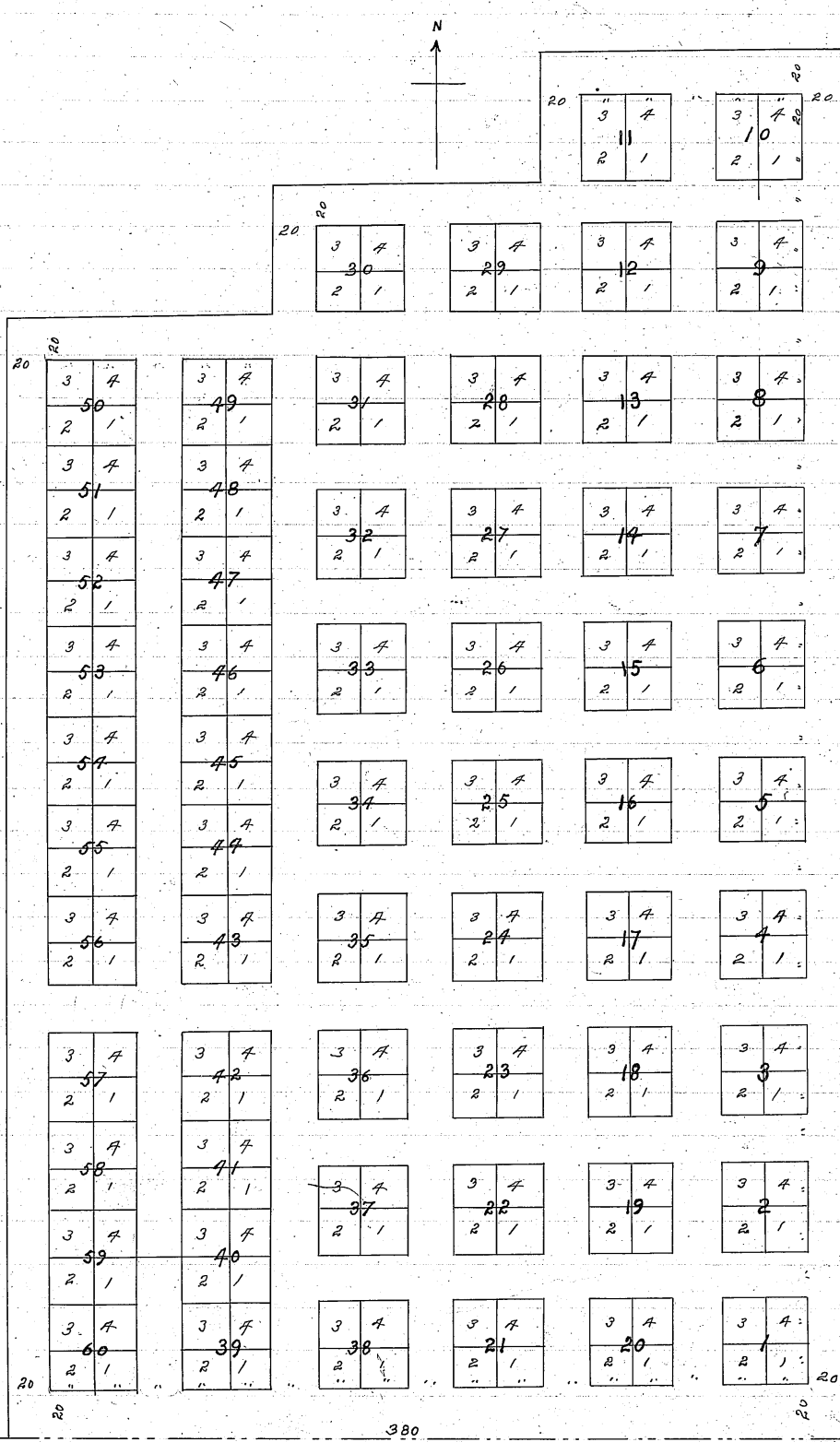


1.

Bohemian Cemetery BOHEMIAN CEMETERY



SE corner of
NE 1/4 SW 1/4 of
S880-15-13

I hereby certify that I have accurately surveyed the lots and blocks of Bohemian Cemetery

as shown on this plat, the blocks from 1 to 38 inclusive are staked at the centers, the remaining blocks from 39 to 60 together with lots therein are staked at the corners.

Said Bohemian Cemetery is located on the N. E. 1/4 of the S. W. 1/4 of Sec. 30-15-13. This plat is made to correct an error in a former plat dated Feb. 27th 1889.

July 9th 1893

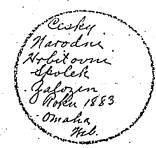
J. H. Black
Surveyor

We the undersigned duly authorized by the Board of Directors and Trustees of the Bohemian Cemetery of Omaha Nebraska, owners and proprietors of the land described by J. H. Black Surveyor on the accompanying plat, do approve and ratify the same, and dedicate the same for Cemetery purposes under the laws of the State of Nebraska as in such cases made and provided.

Signed this 18th day of July 1893.

Václav Engelthaler
President
John V. Vacet
Secy.

In Presence of J
John Rosicky

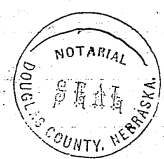


State of Nebraska J. S.
County of Douglas

On this 18th day of July 1893 before me John Rosicky a Notary Public in and for said County personally appeared the above named Václav Engelthaler President and John V. Vacet Secy. officers of the Bohemian Cemetery Association who are personally known to me to be the identical persons whose names are affixed to the above Instrument as grantors and who acknowledged the Instrument to be their voluntary act and deed.

Witness my hand and notarial seal this 18th day of July 1893.

John Rosicky
Notary Public



Entered in Numerical Index and Recorded Aug. 3rd ad 1893 at 9²⁰ o'clock A. M.

J. A. Fitzgerald
Register of Deeds