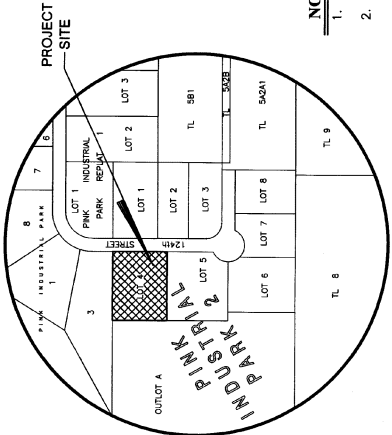


PINK INDUSTRIAL PARK 2 REPLAT 1

LOT 1 AND OUTLOT "A"
BEING A REPLATING OF LOT 4, PINK INDUSTRIAL PARK 2, A SUBDIVISION IN PART OF THE NW 1/4
OF THE SE 1/4 OF SECTION 19, T14N, R12E OF THE 6TH P.M., SARPY COUNTY, NEBRASKA.



VICINITY MAP

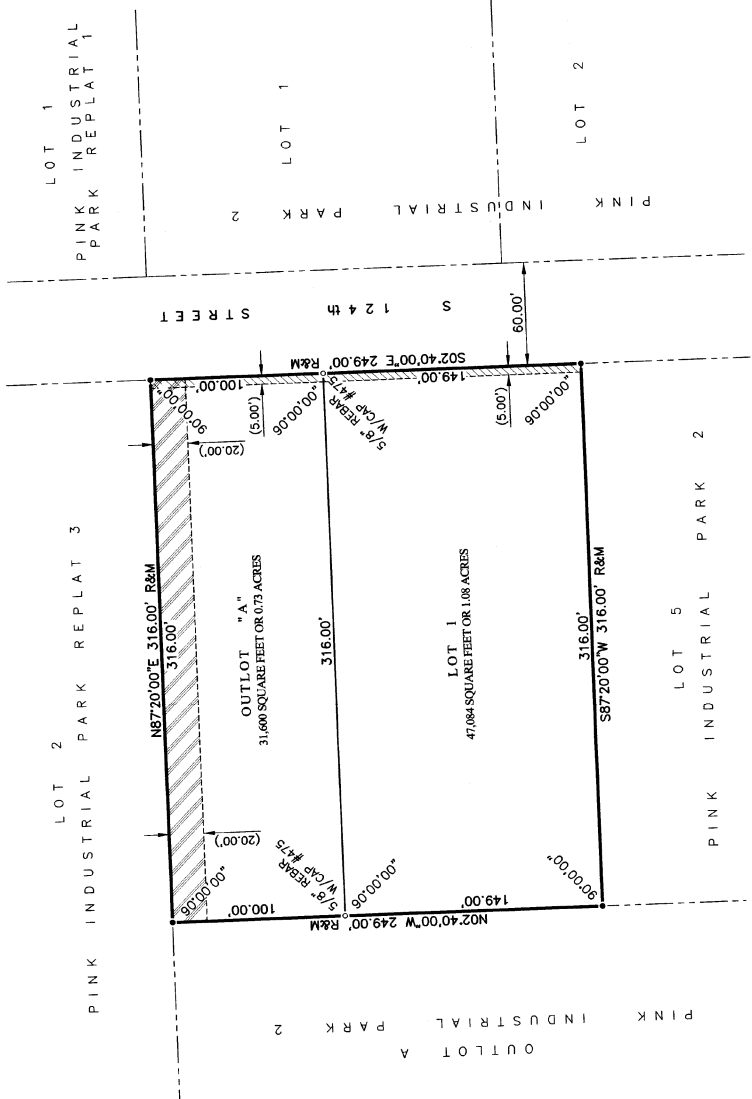
- LEGEND**
- CORNERS FOUND
 - (5/8" REBAR W/CAP #475)
 - CORNERS SET
 - RECORDED DISTANCE
 - MEASURED DISTANCE

NOTES

1. DIMENSIONS IN PARENTHESIS PERTAIN TO EASEMENTS.
2. THE PROPERTY IS ZONED LI (LIMITED INDUSTRIAL DISTRICT) AND HAS THE FOLLOWING MINIMUM SETBACK REQUIREMENTS:
FRONT YARD..... 15 FEET
SIDE YARD..... 10 FEET
REAR YARD..... 10 FEET
3. EXISTING EASEMENTS ARE SHOWN FOR REFERENCE ONLY AND ARE NOT BEING REDEDICATED.
4. OUTLOT "A" WILL BE FOR SEWER AND DRAINAGE AND WILL BE OWNED AND MAINTAINED BY PINK INDUSTRIAL PARK 2 PROPERTY OWNERS ASSOCIATION, INC.

5.00 FOOT WIDE UTILITY EASEMENT GRANTED TO OMAHA, PUBLIC POWER DISTRICT, QWEST CORPORATION METROPOLITAN UTILITIES DISTRICT OF OMAHA, AQUILA AND ANY FUTURE CABLE TELEVISION SYSTEM IN THE FINAL PLAT OF PINK INDUSTRIAL PARK 2 RECORDED AS INSTRUMENT NO. 2007-37017 OF THE SARPY COUNTY RECORDS.

20.00 FOOT WIDE ACCESS AND DRAINAGE EASEMENT AS SHOWN ON THE FINAL PLAT OF PINK INDUSTRIAL PARK 2 RECORDED AS INSTRUMENT NO. 2007-37017 OF THE SARPY COUNTY RECORDS.



APPROVAL OF PAPILLION CITY ENGINEER
THIS PLAT OF PINK INDUSTRIAL PARK 2 REPLAT 1 WAS APPROVED BY THE PAPILLION CITY ENGINEER
THIS 14 DAY OF FEBRUARY, 2017.

Jeffrey L. Thompson, PE CPESC, CFM
JEFFREY L. THOMPSON, PE CPESC, CFM
COUNTY SURVEYOR/ENGINEER

REVIEW BY SARPY COUNTY PUBLIC WORKS
THIS PLAT OF PINK INDUSTRIAL PARK 2 REPLAT 1 WAS REVIEWED BY THE SARPY COUNTY SURVEYOR'S OFFICE
THIS 14 DAY OF FEBRUARY, 2017.

[Signature]
COUNTY SURVEYOR/ENGINEER



SURVEYOR'S CERTIFICATE

I HEREBY CERTIFY THAT I HAVE MADE A BOUNDARY SURVEY OF THE SUBDIVISION DESCRIBED HEREIN AND THAT THE CORNERS AND BOUNDARIES SHOWN ON THE PLAT AT ALL CORNERS OF SAID BOUNDARY AND AT ALL CORNERS WITHIN SAID BOUNDARY TO BE KNOWN AS PINK INDUSTRIAL PARK 2 REPLAT 1, BEING A SUBDIVISION IN SARPY COUNTY, NEBRASKA.

JANUARY 23, 2017

DAVID H. NEET
NEBRASKA RLS #715

OWNERS CERTIFICATION
KNOW ALL MEN BY THESE PRESENTS, THAT WE, PINK FAMILY INVESTMENTS, LLC, A NEBRASKA LIMITED LIABILITY COMPANY, BEING THE OWNERS OF THE LAND DESCRIBED WITHIN THE SURVEYOR'S CERTIFICATE AND EMBRACED WITHIN THIS PLAT, HAVE CAUSED SAID LAND TO BE SUBDIVIDED INTO A LOT AND OUTLOT TO BE NUMBERED AS PINK INDUSTRIAL PARK 2 REPLAT 1 AND OUTLOT "A" AND APPROVED OF THE DISPOSITION OF OUR PROPERTY AS SHOWN ON THIS PLAT AND WE HEREBY GRANT PERPETUAL EASEMENT TO THE OMAHA PUBLIC POWER DISTRICT, CENTURYLINK QWEST CORPORATION, QWEST CORPORATION METROPOLITAN UTILITIES DISTRICT OF OMAHA, AQUILA AND ANY FUTURE CABLE TELEVISION SYSTEM IN THE FINAL PLAT OF PINK INDUSTRIAL PARK 2 AND CABLE TELEVISION SYSTEM IN THE FINAL PLAT OF PINK INDUSTRIAL PARK 2, A SUBDIVISION IN SARPY COUNTY, NEBRASKA, TO PROVIDE A CABLE TELEVISION SYSTEM TO THE SAID FRANCHISE TO PROVIDE A CABLE ASSIGNMENT, TO ERECT, OPERATE, MAINTAIN, REPAIR, AND RENEW POLES, WIRES, CROSSARMS, DOWN GUYS AND ANCHORS, CONDUITS AND OTHER RELATED ACCESSORIES AND TO EXTEND THEREON WIRES OR CABLES FOR THE CARRYING AND TRANSMISSION OF SIGNALS AND SOUNDS OF ALL KINDS AND THE RECEPTION THEREOF, INCLUDING SIGNALS PROVIDED BY A CABLE TELEVISION SYSTEM AND STRIP OF LAND ABUTTING EAST LINES OF LOT 1 AND OUTLOT "A".

NO PERMANENT BUILDINGS, TREES, RETAINING WALLS OR LOOSE ROCK WALLS SHALL BE PLACED IN SAID EASEMENT WAYS, BUT THE SAME MAY BE USED FOR GARDENS, SHRUBS, LANDSCAPING, SIDEWALKS, DRIVEWAYS AND OTHER PURPOSES THAT DO NOT THEN OR LATER INTERFERE WITH THE ADDRESSAD USES OR RIGHTS HEREBY GRANTED.

PINK FAMILY INVESTMENTS, LLC,
A NEBRASKA LIMITED LIABILITY COMPANY

BY: *[Signature]*
GARY C. PINK, MANAGER

ACKNOWLEDGEMENT OF NOTARY

STATE OF NEBRASKA)
COUNTY OF DOUGLAS)
THE FOREGOING OWNER'S CERTIFICATION WAS ACKNOWLEDGED BEFORE ME THIS 20TH DAY OF JANUARY, 2017 BY GARY C. PINK, MANAGER OF PINK FAMILY INVESTMENTS, LLC, A NEBRASKA LIMITED LIABILITY COMPANY, ON BEHALF OF SAID COMPANY.

[Signature]
NOTARY PUBLIC



SARPY COUNTY TREASURER'S CERTIFICATE

I HEREBY CERTIFY THAT THE PROPERTY DESCRIBED IN THIS PLAT OF PINK INDUSTRIAL PARK 2 REPLAT 1 WAS RECEIVED AND EMBRACED WITHIN THIS PLAT AS SHOWN ON THE RECORDS OF THIS OFFICE THIS 14 DAY OF FEBRUARY, 2017.

[Signature]
SARPY COUNTY TREASURER

TAXES ASSESSED AND LEVIED FOR THE CURRENT YEAR ARE SET FORTH IN THE PAID TREASURER'S CERTIFICATION IS ONLY VALID UNTIL DECEMBER 31ST OF THIS YEAR.

APPROVAL OF PAPILLION CITY ADMINISTRATOR

THIS PLAT OF PINK INDUSTRIAL PARK 2 REPLAT 1 WAS APPROVED BY THE PAPILLION CITY ADMINISTRATOR THIS 14 DAY OF FEBRUARY, 2017.

[Signature]
DAY HOINS

APPROVAL OF PAPILLION CITY PLANNING DIRECTOR

THIS PLAT OF PINK INDUSTRIAL PARK 2 REPLAT 1 WAS APPROVED BY THE PAPILLION CITY PLANNING DIRECTOR THIS 14 DAY OF FEBRUARY, 2017.

[Signature]
MARK A. STURSMAN, ACP



1100 South 16th Street, Suite 100
Omaha, NE 68154
P: 402.330.8880 F: 402.330.8886
td2.com

FILED SARPY COUNTY NEBRASKA
INSTRUMENT NUMBER
2017-03871
02/14/2017 4:30:47 PM
[Signature]
REGISTER OF DEEDS



PINK INDUSTRIAL PARK 2 REPLAT 1
LOT 1 AND OUTLOT "A"



No.	Description	MM-DD-YY
1		
2		
3		
4		

Job No: A1049-17-1A
Drawn By: RJC
Reviewed By: DAIN
Date: JANUARY 23, 2017
Book:
Page:

CITY OF PAPILLION
SMALL SUBDIVISION

SHEET NUMBER
SHEET 1 OF 1