



DEED 2004167309



DEC 28 2004 13:38 P 13

Received - RICHARD TAKECHI
Register of Deeds, Douglas County, NE
12/28/2004 13:38:29.19



2004167309

THIS PAGE INCLUDED FOR INDEXING
PAGE DOWN FOR BALANCE OF INSTRUMENT

Deed *y*
FEE *73.50* FB *OC-43331-new*
BKP *21-15-11* C/O *✓* COMP *✓*
13 DEL *MS* SCAN *✓* FV *PV*
FB

BKPS 12-29-04

TOO E 1

WEST VILLAGE POINTE

LOTS 1 to 11, INCLUSIVE, AND
OUTLOTS A to D, INCLUSIVE

BEING A PLATTING OF PART OF THE NW 1/4 OF SECTION 21,
T15N, R11E OF THE 6th P.M., DOUGLAS COUNTY, NEBRASKA.

WEST VILLAGE POINTE

FINAL PLAT

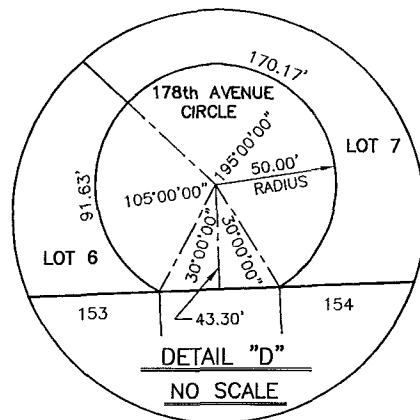
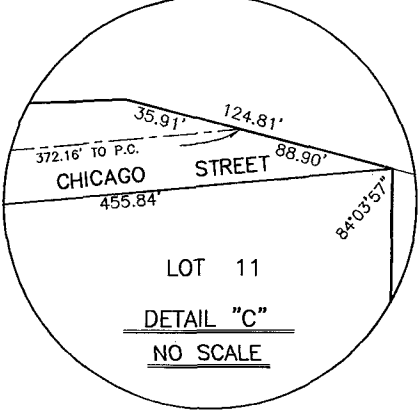
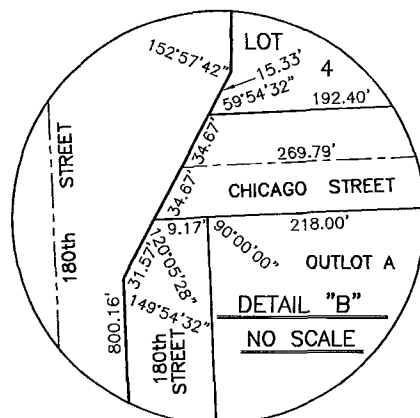
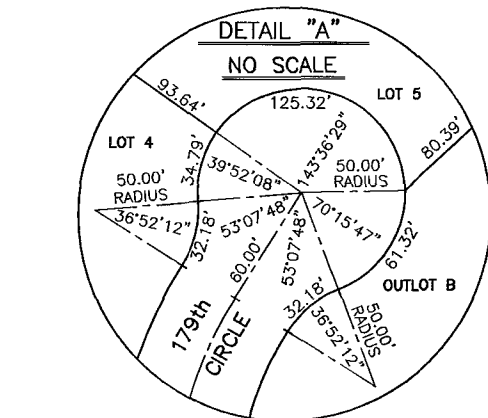
THOMPSON, DREESSEN & DORNER, INC.
Consulting Engineers & Land Surveyors
10836 OLD MILL ROAD OMAHA, NEBRASKA 68154
TEL: (402) 330-8860 FAX: (402) 330-5866
EMAIL: TD2MAIL@TD2CO.COM WEB: WWW.TD2CO.COM



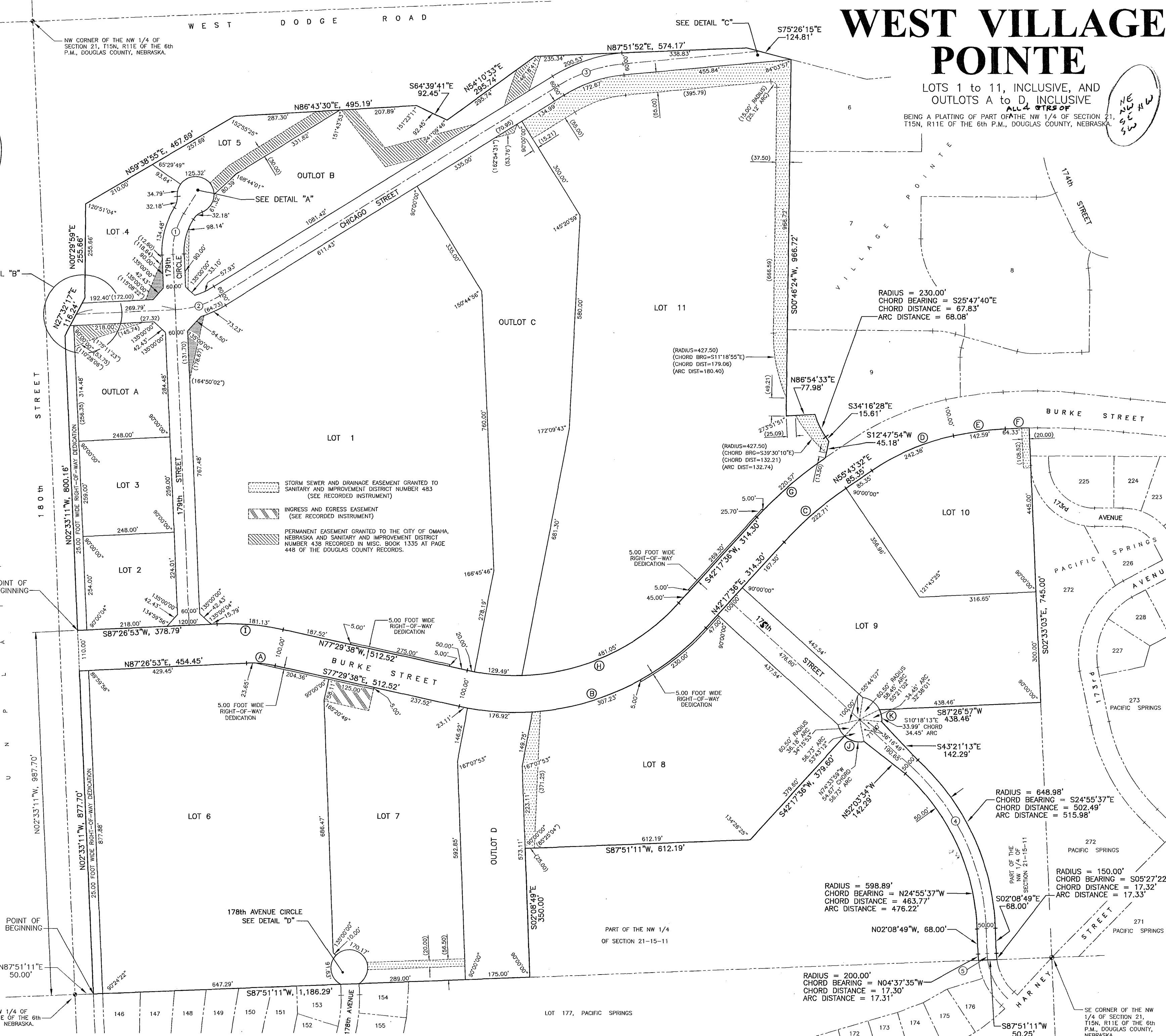
SHEET 1 OF 2

738-134

A738134A1.DWG



| CURVE | DELTA | TANGENT | LENGTH | RADIUS |
|-------|------------|---------|---------|---------|
| 1 | 34°42'00" | 60.00' | 116.31' | 192.09' |
| 2 | 29°12'49" | 65.00' | 127.17' | 249.42' |
| 3 | 26°36'25" | 95.01' | 186.60' | 401.82' |
| 4 | 45°33'35" | 262.00' | 496.09' | 623.89' |
| 5 | 5°40'10" | 8.67' | 17.32' | 175.00' |
| 6 | 105°03'33" | 213.96' | 300.72' | 164.00' |



SW CORNER OF THE NW 1/4 OF
SECTION 21, T15N, R11E OF THE 6th
P.M., DOUGLAS COUNTY, NEBRASKA.
(COMMENCING POINT)

PART OF THE NW 1/4
OF SECTION 21-15-11

SE CORNER OF THE NW
1/4 OF SECTION 21,
T15N, R11E OF THE 6th
P.M., DOUGLAS COUNTY,
NEBRASKA.

