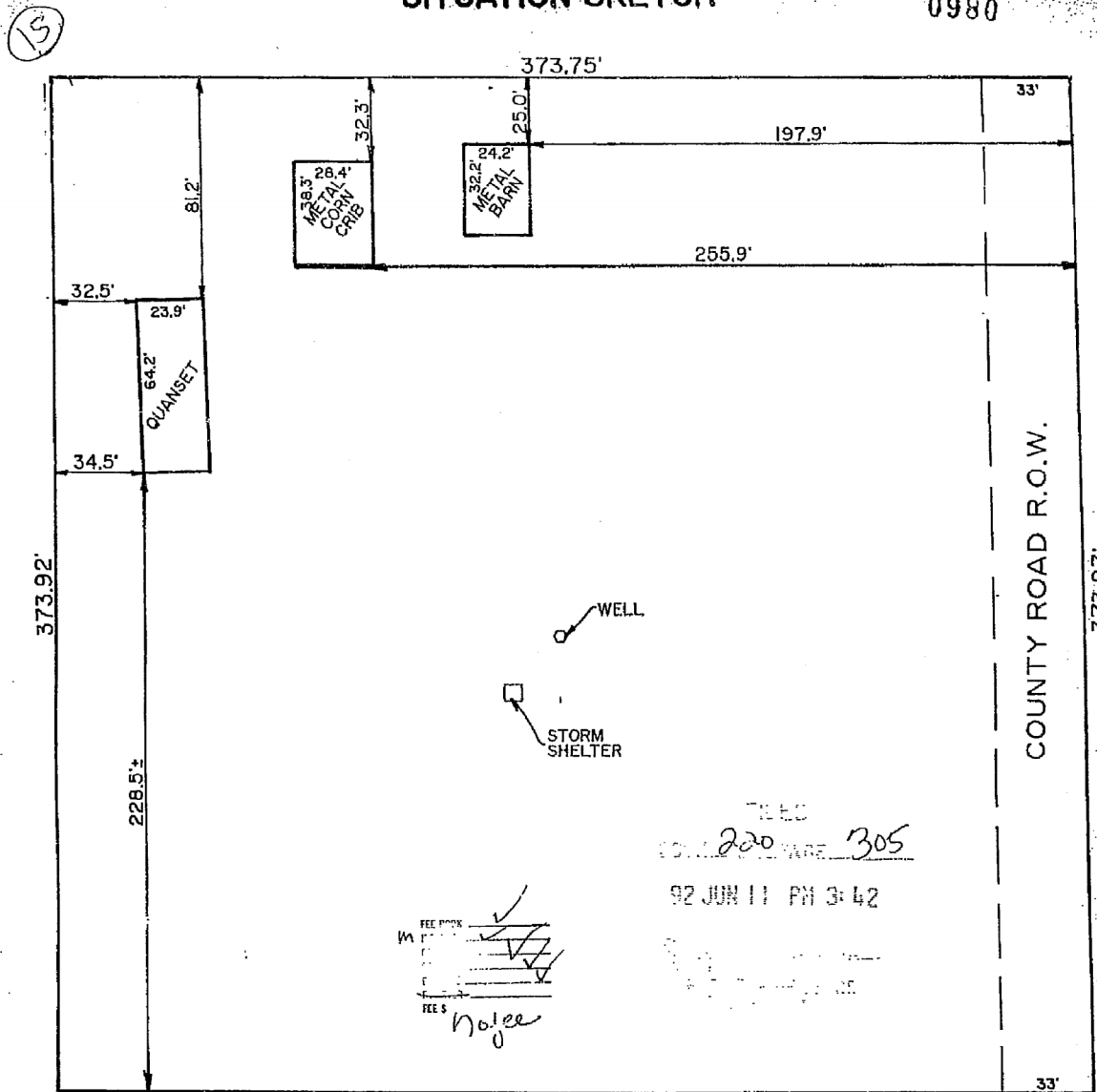


SITUATION SKETCH

0980



Approved by the Dodge County Board of Adjustments on May 21, 1992 and received and placed on file by the Dodge County Board of Supervisors on June 10, 1992.

U.S. HIGHWAY #30

CORNER TIES

SE COR SEC 5-T17N-R5E

Found a spike nail in washer flush with asphalt surface as recorded.
SW 64.55' to nail and disc in power pole
NW 68.44' to top Southeast Corner R-O-W marker
NE 59.51' to nail and disc telephone drop box post
SE 86.39' County Surveyor aluminum cap stamped "R.M. 1992"
S 0.5' to centerline east-west Hwy #30
N 60.00' to 5/8" x 24" rebar
On centerline county road north

SW COR SE1/4 SEC 5-T17N-R5E

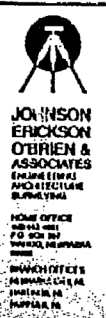
Found a 1/2" rebar 1.0' below asphalt surface
NNW 61.60' to nail "x" in telephone back pole
N 60.60' to nail in top of fence post
NNE 64.91' to nail in top of end fence post
SSW 61.05' to nail "x" in power pole
W 29.5' to centerline dirt road south
On centerline of Hwy #30

NE COR SE1/4 SEC 5-T17N-R5E

Found aluminum cap stamped "Dodge County Surveyor G.C. 1992" 0.6' deep
SE 21.02' to Southwest Corner bridge rail post
NE 60.15' to aluminum cap stamped "R.M. 1992"
N 0.3' South edge of deck armor angle
NW 23.01' to Southeast Corner bridge rail post
W 41.32' Aluminum cap stamped "R.M. 1992"
E 1.5' centerline north-south county road



DATE: 04/17/92	
SCALE: 1" = 50'	
DRAWN: CLE	
JOB NO: SU-1547	
FIELD BK: DODGE CO. #8	
FIELD WK: JS/DF	
SHEET: 2 OF	
FILE NO: 17A-118	



Approved by the Dodge County Board of Adjustments on May 21, 1992 and received and placed on file by the Dodge County Board of Supervisors on June 10, 1992.

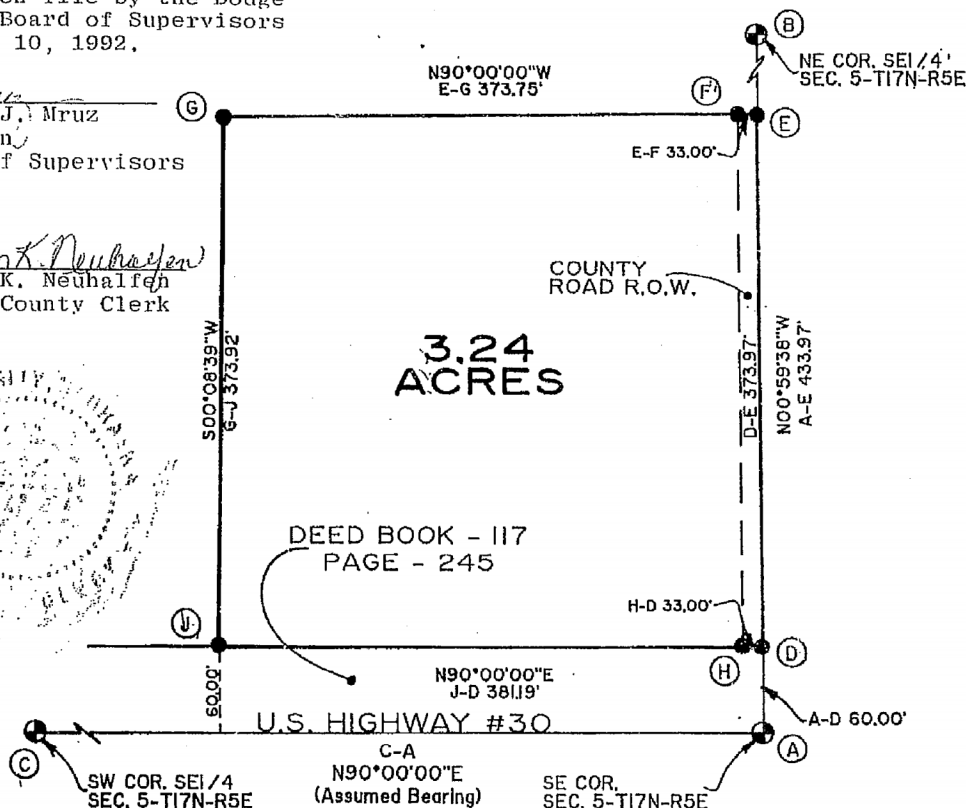
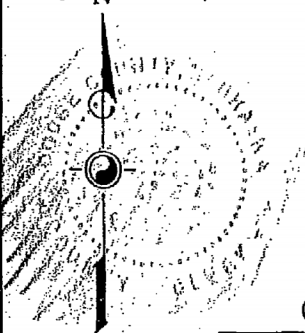
SURVEY RECORD **REZNICEK SURVEY**

0981

Walter J. Mruz
Walter J. Mruz
Chairman
Board of Supervisors

ATTEST:

Sharon K. Neuhalfen
Sharon K. Neuhalfen
Deputy County Clerk



LEGAL DESCRIPTION:

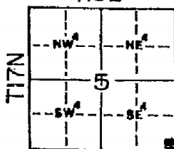
A parcel of land located in the Southeast Quarter of Section 5, Township 17 North, Range 5 East of the Sixth P.M., Dodge County, Nebraska being described as follows: Commencing at the Southeast Corner of said Section 5, and assuming the South Line of said Southeast Quarter to have a bearing of N90°00'00\"E; thence N00°59'38\"W on the East Line of said Southeast Quarter, 60.00 feet to a point on the North Right-of-Way Line of U.S. Highway #30 (recorded in deed book 117, page 245), said point being the true point of beginning; thence continuing N00°59'38\"W on said East Line, 373.97 feet; thence N90°00'00\"W parallel with said South Line, 373.75 feet; thence S00°08'39\"W, 373.92 feet to a point on said North Right-of-Way Line, said point being 60.00 feet north of said South Line; thence N90°00'00\"E on said North Right-of-Way Line parallel with said South Line, 381.19 feet to the true point of beginning, containing 3.24 acres.

FIELD NOTES:

Found existing monuments of record at points A, B and C. Assumed line CA to have a bearing of N90°00'00\"E. Produced line AB N00°59'38\"W setting points D and E on line 60.00 feet and 433.97 feet from point A respectively. Produced a line from point E N90°00'00\"W setting points F and G on line 33.00 feet and 373.75 feet from point E respectively. Produced a line from point D N90°00'00\"W setting points H and J on line 33.00 feet and 381.19 feet from point D respectively.

Produced and measured all lines as shown on the plat. Set a 5/8 inch by 24 inch rebar at points D, E, F, G, H and J. All lines produced and angles and distances measured with a Lietz Set 3C Total Station Serial Number D20824 and a 100 foot steel tape. Fieldwork for this survey was completed on April 14, 1992.

DODGE COUNTY
R5E

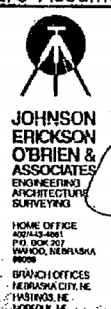


VICINITY SKETCH

NOTE: All Bearings are Assumed.

- ◆ Corner Found
- Corner Set
- Temporary Point
- R Recorded Distance
- M Measured Distance

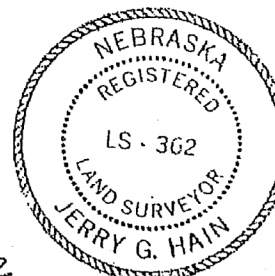
DATE: 04/17/92
SCALE: 1\" = 100'
DRAWN: JS/CLE
JOB NO: SU-1547
FIELD BK: DODGE CO. #8
FIELD WK: JS/DF
SHEET 1 OF
FILE NO: 17A-118



SURVEYOR'S CERTIFICATE:

I hereby certify that this plat of a survey was made by me or under my supervision and is true and accurate to the best of my knowledge, and that I am a duly Registered Land Surveyor under the laws of the State of Nebraska.

Jerry G. Hain
Jerry G. Hain, RLS 362



4-20-92