

THIS PLAT IS INTENDED TO SHOW AS ACCURATELY AS POSSIBLE THE RELATIONSHIP OF TRACTS OF LAND BUT IS NOT INTENDED TO BE CONSTRUED AS SURVEY ACCURATE IN ANY MANNER.

Princeton Rd

No. 43

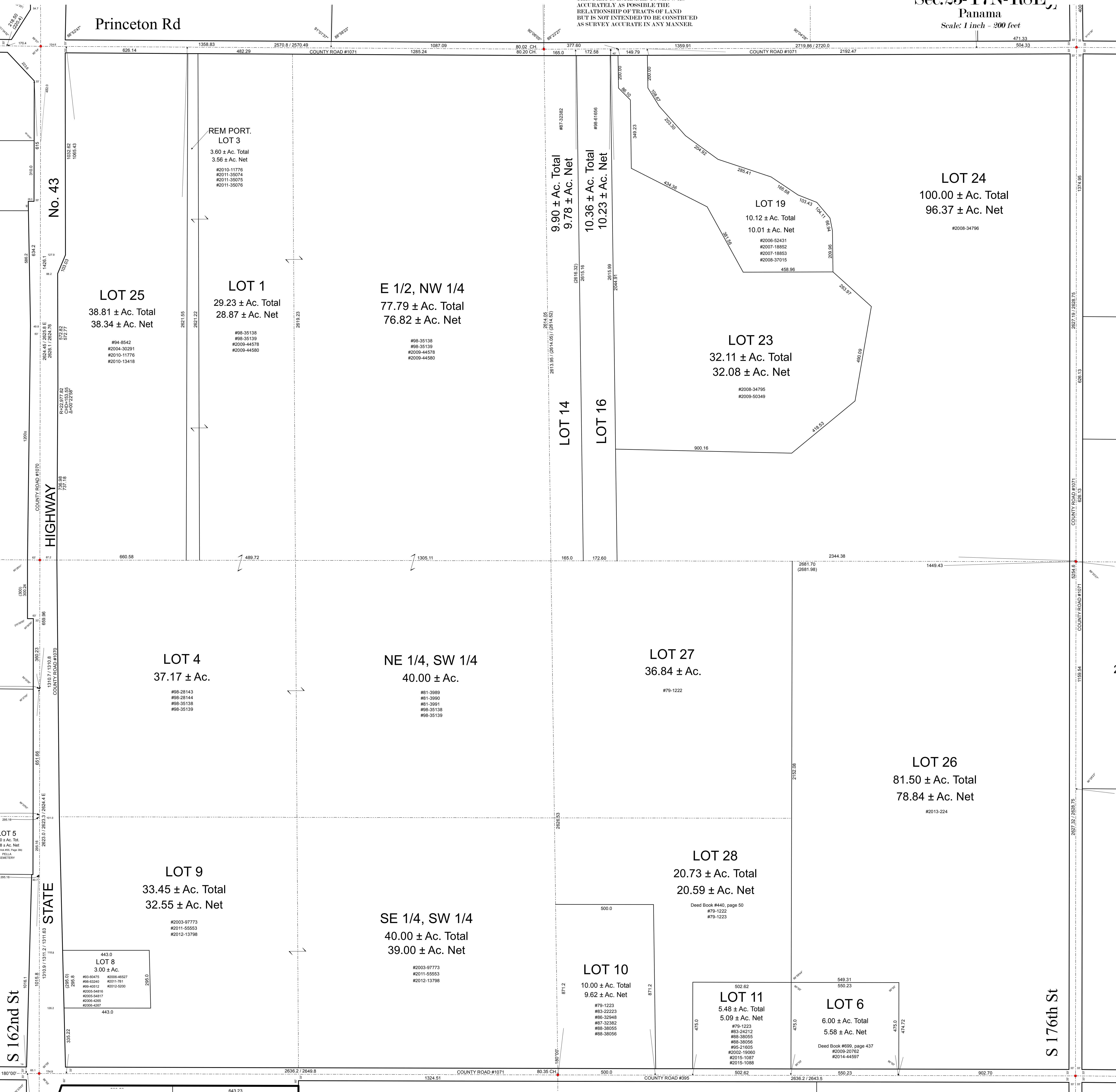
HIGHWAY

STATE

S 162nd St

Pella Rd

S 176th St



LOT 25
38.81 ± Ac. Total
38.34 ± Ac. Net
#94-8542
#2004-30291
#2010-11776
#2010-13418

LOT 1
29.23 ± Ac. Total
28.87 ± Ac. Net
#98-35138
#98-35139
#2009-44578
#2009-44580

E 1/2, NW 1/4
77.79 ± Ac. Total
76.82 ± Ac. Net
#98-35138
#98-35139
#2009-44578
#2009-44580

LOT 14
9.90 ± Ac. Total
9.78 ± Ac. Net
#87-32832

LOT 16
10.36 ± Ac. Total
10.23 ± Ac. Net
#98-61656

LOT 19
10.12 ± Ac. Total
10.01 ± Ac. Net
#2008-52431
#2007-18852
#2007-18853
#2008-37015

LOT 23
32.11 ± Ac. Total
32.08 ± Ac. Net
#2008-34795
#2008-50349

LOT 24
100.00 ± Ac. Total
96.37 ± Ac. Net
#2008-34796

LOT 4
37.17 ± Ac.
#98-28143
#98-28144
#98-35138
#98-35139

NE 1/4, SW 1/4
40.00 ± Ac.
#81-3989
#81-3990
#81-3991
#98-35138
#98-35139

LOT 27
36.84 ± Ac.
#79-1222

LOT 26
81.50 ± Ac. Total
78.84 ± Ac. Net
#2013-224

LOT 9
33.45 ± Ac. Total
32.55 ± Ac. Net
#2003-97773
#2011-55553
#2012-13798

SE 1/4, SW 1/4
40.00 ± Ac. Total
39.00 ± Ac. Net
#2003-97773
#2011-55553
#2012-13798

LOT 28
20.73 ± Ac. Total
20.59 ± Ac. Net
Deed Book #440, page 50
#79-1222
#79-1223

LOT 10
10.00 ± Ac. Total
9.62 ± Ac. Net
#79-1223
#83-22223
#86-32948
#87-32362
#88-38055
#88-38056

LOT 11
5.48 ± Ac. Total
5.09 ± Ac. Net
#79-1223
#83-24212
#88-38055
#88-38056
#95-21605
#2002-19060
#2015-1087
#2015-1088

LOT 6
6.00 ± Ac. Total
5.58 ± Ac. Net
Deed Book #699, page 437
#2009-20762
#2014-44597

LOT 8
3.00 ± Ac.
#93-65475 #2006-46527
#98-63240 #2011-781
#99-40512 #2012-52000
#2005-54816
#2005-54817
#2006-4265
#2006-4267
443.0