

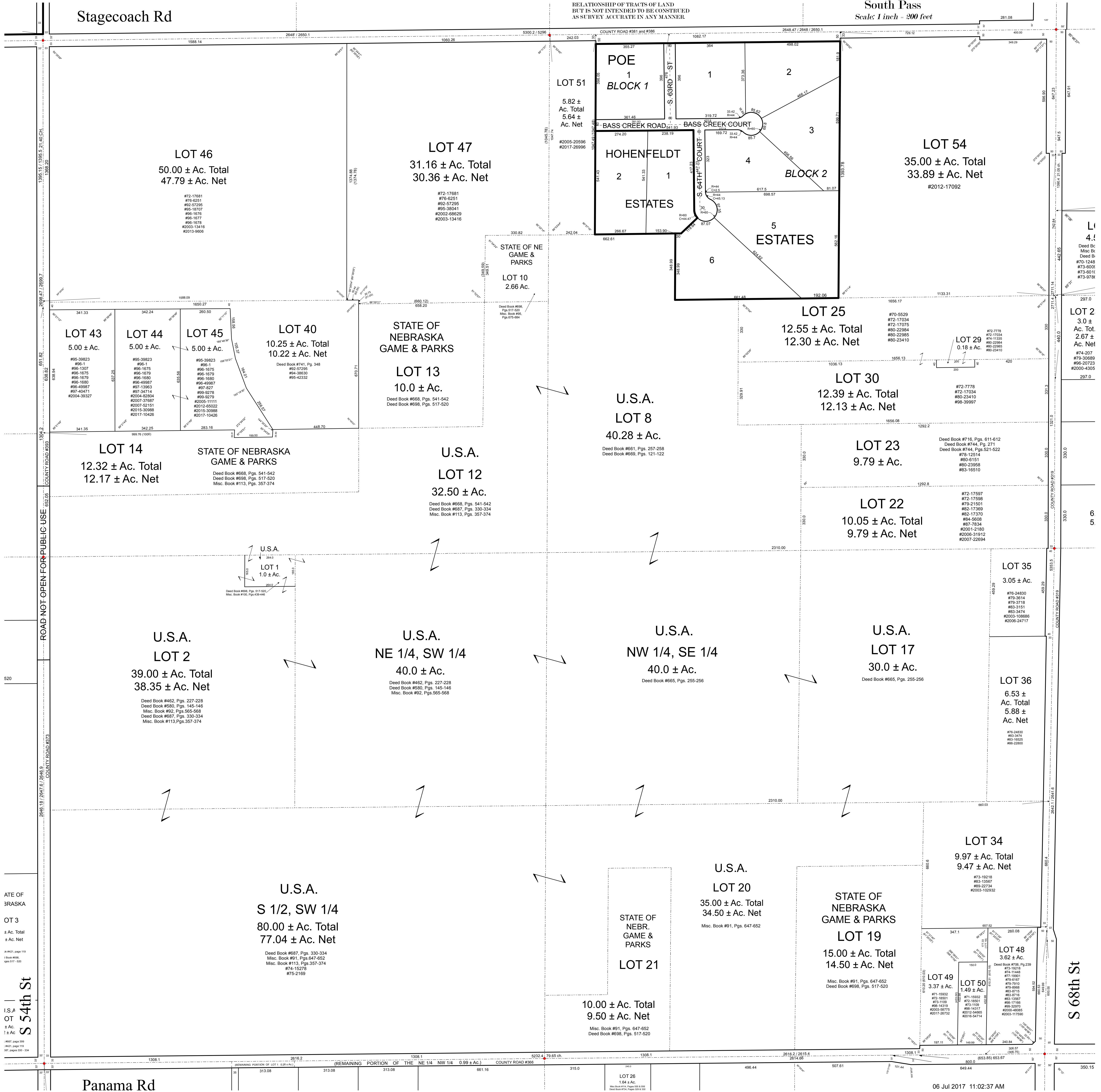
Sec. 4-T7N-R7E

South Pass

Scale: 1 inch = 200 feet

Stagecoach Rd

THIS PLAT IS INTENDED TO SHOW AS ACCURATELY AS POSSIBLE THE RELATIONSHIP OF TRACTS OF LAND BUT IS NOT INTENDED TO BE CONSTRUED AS SURVEY ACCURATE IN ANY MANNER

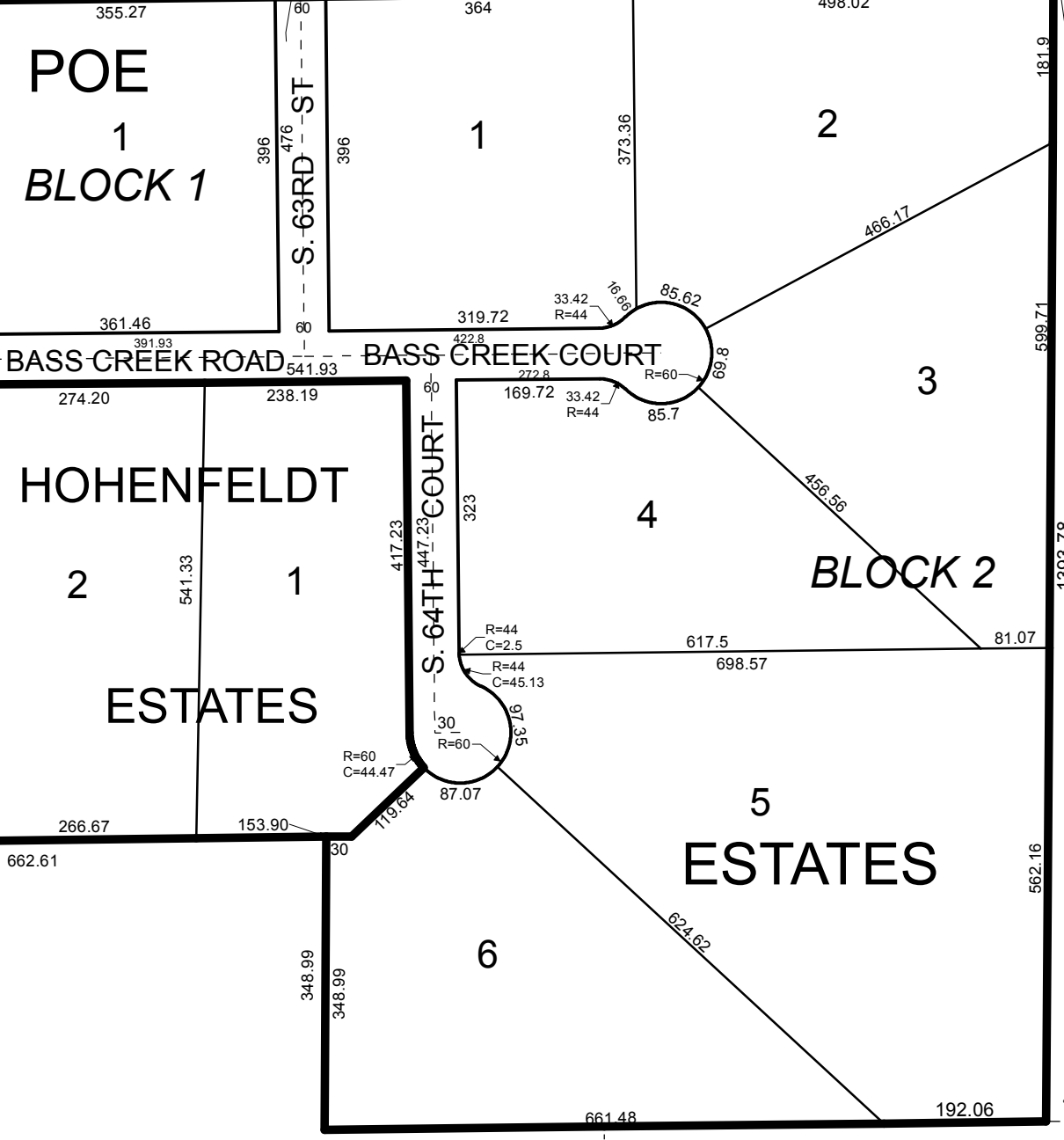


LOT 46  
50.00 ± Ac. Total  
47.79 ± Ac. Net

LOT 47  
31.16 ± Ac. Total  
30.36 ± Ac. Net

LOT 54  
35.00 ± Ac. Total  
33.89 ± Ac. Net  
#2012-17092

LOT 51  
5.82 ± Ac. Total  
5.64 ± Ac. Net



LOT 43  
5.00 ± Ac.

LOT 44  
5.00 ± Ac.

LOT 45  
5.00 ± Ac.

LOT 40  
10.25 ± Ac. Total  
10.22 ± Ac. Net

LOT 13  
10.0 ± Ac.

STATE OF NEBRASKA  
GAME & PARKS

LOT 25  
12.55 ± Ac. Total  
12.30 ± Ac. Net

LOT 30  
12.39 ± Ac. Total  
12.13 ± Ac. Net

U.S.A.  
LOT 8  
40.28 ± Ac.

LOT 14  
12.32 ± Ac. Total  
12.17 ± Ac. Net

STATE OF NEBRASKA  
GAME & PARKS

U.S.A.  
LOT 12  
32.50 ± Ac.

LOT 23  
9.79 ± Ac.

LOT 22  
10.05 ± Ac. Total  
9.79 ± Ac. Net

U.S.A.  
LOT 1  
1.0 ± Ac.

U.S.A.  
LOT 2  
39.00 ± Ac. Total  
38.35 ± Ac. Net

U.S.A.  
NE 1/4, SW 1/4  
40.0 ± Ac.

U.S.A.  
NW 1/4, SE 1/4  
40.0 ± Ac.

U.S.A.  
LOT 17  
30.0 ± Ac.

LOT 35  
3.05 ± Ac.

LOT 36  
6.53 ± Ac. Total  
5.88 ± Ac. Net

U.S.A.  
S 1/2, SW 1/4  
80.00 ± Ac. Total  
77.04 ± Ac. Net

STATE OF NEBR.  
GAME & PARKS  
LOT 21  
10.00 ± Ac. Total  
9.50 ± Ac. Net

U.S.A.  
LOT 20  
35.00 ± Ac. Total  
34.50 ± Ac. Net

STATE OF NEBRASKA  
GAME & PARKS  
LOT 19  
15.00 ± Ac. Total  
14.50 ± Ac. Net

LOT 34  
9.97 ± Ac. Total  
9.47 ± Ac. Net

LOT 49  
1.49 ± Ac.

LOT 48  
3.62 ± Ac.

Panama Rd

S 54th St

S 68th St