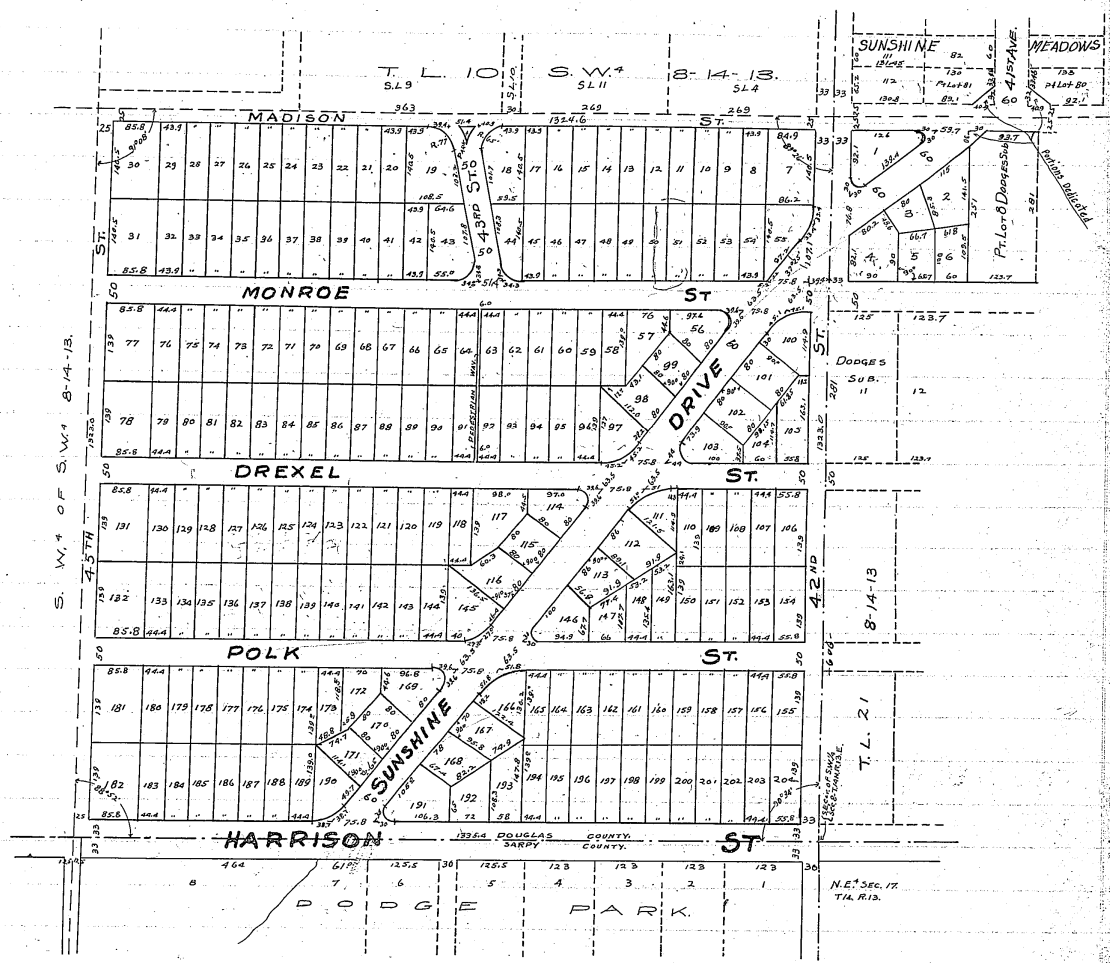


# SUNSHINE FARMS

9.

AN ADDITION IN DOUGLAS COUNTY NEBR.

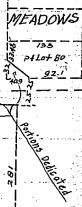


S. W. 1/4 OF S. W. 1/4 8-14-13.

I, hereby certify that I have accurately surveyed and staked with Gas Pipe corners, the Lots, streets, Portions of Streets, Pedestrian Way, Drive and Park of "Sunshine Farms" An Addition in Douglas County, Nebraska, more fully described as follows, Beginning at the south East Corner of the Southwest one Quarter of Section 8, Township 14 N, Range 13 East. Thence in a Westerly direction along the south line of said Section 8, 1335.4 feet, to the north and south 40 Acre line, in the South West 1/4 of Section 8, thence in a Northerly direction along said North & South 40 Acre line 1323.0 feet, to the East and West 40 Acre line in the said South West 1/4 of Section 8, thence in an easterly direction along said 40 Acre line 1324.6 feet to the North and South Center line of said Section 8, thence in a southerly direction along the North and South center line of Section 8, a distance of 1323.0 ft. to the place of beginning.

Also a parcel of land, formerly known as Lots 9 and 10 of Dodge's Subdivision as Surveyed, Platted and Recorded situated in the S.W. 1/4 of the S.E. 1/4 of Section 8, Township 14 north, Range 13 East in Douglas County, Nebraska.

W.E. Standeven.  
Surveyor.



KNOW ALL MEN BY THESE PRESENCE, That REAL ESTATE CONSTRUCTION AND FINANCE CO. a Corporation, owners and Proprietors of the Property described in the Engineers Certificate, have caused the same to be subdivided into Lots, Streets, Portions of Streets, Drive, Pedestrian Way and Park, and numbered and named as they appear on this Plat, and to be hereafter known as "Sunshine Farms"; and they do hereby ratify and approve of the disposition of their property as shown by this Plat, and they hereby dedicate for Public use the Streets, Portions of Streets, Drive, Pedestrian Way and Park as indicated on this Plat; Also we hereby dedicate to the Public for Street purposes, portions of Lots 80 and 81 of Sunshine Meadows, as surveyed, platted and recorded, and a portion of Lot 8 in Dodge Subdivision all said portions being as indicated on this Plat.

In Witness Whereof said Real Estate Construction and Finance Co. have hereto caused its Corporation Seal to be affixed and these presents, to be signed by its President this 29th day of December 1925.

In Presence of  
 R.D. Spooner  
 Witness

Real Estate Construction and Finance Co.  
 By Hugh H. Harper, President  
 Attest: W.P. Kuehner, Secretary

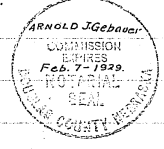


State of Nebraska }  
 Douglas County } ss.

On this 29th day of December, A.D. 1925, before me a Notary Public duly commissioned and Qualified in and for said County, personally appeared the above named Hugh H. Harper, President of Real Estate Construction and Finance Co. who is personally known by me, to be the identical person whose name is affixed to the Ownership Certificate as President of said Corporation, and he acknowledged the instrument to be his voluntary act and deed and the voluntary act and deed of said Corporation.

Witness my hand and Notarial Seal at Omaha, Douglas County, the date aforesaid.

Arnold J. Gebauer  
 Notary Public.  
 My Commission Expires February 7-1929.



State of Nebraska }  
 Douglas County } ss.

This is to Certify that I, find no Regular Taxes or Special Assessments due or unpaid upon the lands as indicated in these dedications and descriptions on this Plat, this 25th day of January, 1926.

Otto J. Bauman  
 City & County Treasurer.  
 By Fred J. Armbrust  
 Deputy

Approved and Accepted this 9 day of February A.D. 1926.  
 James P. Hootor  
 City Clerk.

James C. Dahlman  
 Mayor & Pres City Council.



Received Jan. 25-1926  
 Presented To Council  
 Jan. 26-1926.  
 P & P.  
 Feb. 9-1926  
 Approved.

James P. Hootor  
 City Clerk.

I hereby approve this Plat of "Sunshine Farms" this 29th day of Dec. A. D. 1925  
 Herman Beal  
 City Engineer.

FILED IN NEBRASKA }  
 Douglas County }  
 Entered on general index and filed for record in the Recorder of Deeds office of said County this 9th day of February 1926 at 12:30 o'clock P.M.  
 Wm. P. ...  
 Register of Deeds

Compared by M + W