

# RIDPATH ACRES

BEING A PLATTING OF TAXLOT 8B AND TAXLOT 9, LOCATED IN THE SOUTHEAST ONE-QUARTER OF SECTION 25, TOWNSHIP 14 NORTH, RANGE 10 EAST OF THE 6th. P.M., SARPY COUNTY, NEBRASKA.

## LOT 1 AND 2

FILED SARPY CO. NE

2001-41944

2001 DEC 14 P 3:11 P

REGISTER OF DEEDS

2001 DEC 14 P 3:11 P

2001 DEC 14 P 3:11 P

2001 DEC 14 P 3:11 P

2001 DEC 14 P 3:11 P

2001 DEC 14 P 3:11 P

2001 DEC 14 P 3:11 P

2001 DEC 14 P 3:11 P

2001 DEC 14 P 3:11 P

2001 DEC 14 P 3:11 P

2001 DEC 14 P 3:11 P

2001 DEC 14 P 3:11 P

2001 DEC 14 P 3:11 P

2001 DEC 14 P 3:11 P

2001 DEC 14 P 3:11 P

2001 DEC 14 P 3:11 P

2001 DEC 14 P 3:11 P

2001 DEC 14 P 3:11 P

2001 DEC 14 P 3:11 P

2001 DEC 14 P 3:11 P

2001 DEC 14 P 3:11 P

2001 DEC 14 P 3:11 P

2001 DEC 14 P 3:11 P

2001 DEC 14 P 3:11 P

2001 DEC 14 P 3:11 P

2001 DEC 14 P 3:11 P

2001 DEC 14 P 3:11 P

2001 DEC 14 P 3:11 P

2001 DEC 14 P 3:11 P

2001 DEC 14 P 3:11 P

2001 DEC 14 P 3:11 P

2001 DEC 14 P 3:11 P

2001 DEC 14 P 3:11 P

2001 DEC 14 P 3:11 P

2001 DEC 14 P 3:11 P

2001 DEC 14 P 3:11 P

2001 DEC 14 P 3:11 P

2001 DEC 14 P 3:11 P

2001 DEC 14 P 3:11 P

2001 DEC 14 P 3:11 P

2001 DEC 14 P 3:11 P

2001 DEC 14 P 3:11 P

2001 DEC 14 P 3:11 P

2001 DEC 14 P 3:11 P

2001 DEC 14 P 3:11 P

2001 DEC 14 P 3:11 P

2001 DEC 14 P 3:11 P

2001 DEC 14 P 3:11 P

2001 DEC 14 P 3:11 P

2001 DEC 14 P 3:11 P

2001 DEC 14 P 3:11 P

2001 DEC 14 P 3:11 P

2001 DEC 14 P 3:11 P

2001 DEC 14 P 3:11 P

2001 DEC 14 P 3:11 P

2001 DEC 14 P 3:11 P

2001 DEC 14 P 3:11 P

2001 DEC 14 P 3:11 P

2001 DEC 14 P 3:11 P

2001 DEC 14 P 3:11 P

2001 DEC 14 P 3:11 P

2001 DEC 14 P 3:11 P

FINAL PLAT  
RIDPATH ACRES

Hill-Farrell Associates, Inc.  
Architects, Engineers, Land Surveyors  
1008 Lincoln Rd., Bellevue, NE 68006 402-291-6100

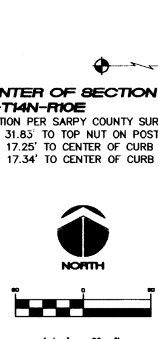


PROJECT NO.

01-93

SHEET NO.

1



LEGEND  
● SECTION CORNER FOUND  
○ PROPERTY CORNER FOUND  
○ PROPERTY CORNER SET (4th REBAR)  
△ COMPUTED CORNER (NO MONUMENT SET)

APPROVAL OF THE GRETA PLANNING COMMISSION

THIS PLAT OF "RIDPATH ACRES" WAS APPROVED BY THE GRETA PLANNING COMMISSION ON THIS 22nd DAY OF SEPTEMBER, 2001.

9/20/2001

CHAIRMAN, GRETA PLANNING COMMISSION

APPROVAL OF THE GRETA CITY COUNCIL

THIS PLAT OF "RIDPATH ACRES" WAS APPROVED BY THE GRETA CITY COUNCIL ON THIS 10th DAY OF SEPTEMBER, 2001.

10/16/2001

MAYOR

10/16/2001

CITY CLERK

COUNTY TREASURER'S CERTIFICATION

THIS IS TO CERTIFY THAT I FIND NO REGULAR OR SPECIAL TAXES DUE OR DELINQUENT AGAINST THE PROPERTY AS DESCRIBED WITHIN THIS PLAT AS SHOWN BY THE RECORDS OF THIS OFFICE.

12/14/2001

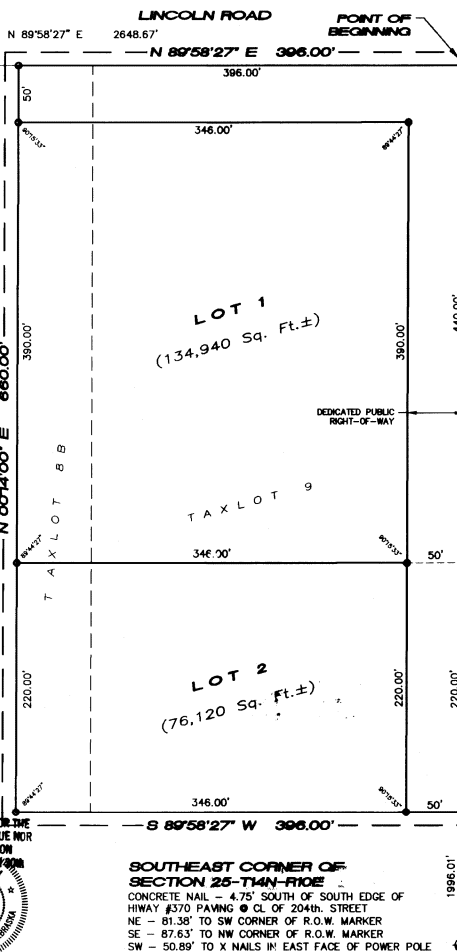
COUNTY TREASURER

REVIEW OF SARPY COUNTY SURVEYOR

I HAVE REVIEWED THIS PLAT OF "RIDPATH ACRES" OF THIS YEAR.

December 14, 2001

SARPY COUNTY SURVEYOR



EAST ONE-QUARTER CORNER OF SECTION 25-T14N-R10E  
1" IRON PIPE  
NE - 36.97' TO X NAILS IN GATE POST  
E - 37.13' TO X NAILS IN TOP OF CORNER POST  
SE - 55.83' TO X NAILS IN TOP OF 3rd. FENCE POST  
SOUTH OF FENCE CORNER



LAND SURVEYOR'S CERTIFICATE  
I, MICHAEL R. SHARP, THE UNDERSIGNED REGISTERED LAND SURVEYOR, DO HEREBY CERTIFY THAT I HAVE MADE AN ACCURATE SURVEY OF THE PROPERTY DESCRIBED HEREIN AND THAT PERMANENT MARKERS HAVE BEEN FOUND OR SET AT ALL CORNERS OF ALL LOTS IN RIDPATH ACRES, BEING A PLATTING OF TAXLOT 8B AND TAXLOT 9, LOCATED IN THE SOUTHEAST ONE-QUARTER OF SECTION 25, TOWNSHIP 14 NORTH, RANGE 10 EAST OF THE 6th. P.M., SARPY COUNTY, NEBRASKA, AND BEING MORE PARTICULARLY DESCRIBED AS FOLLOWS: BEGINNING AT THE EAST ONE-QUARTER CORNER OF SAID SECTION, THENCE S 00°14'00" W (ASSUMED BEARING) FOR 660.00 FEET ALONG THE EAST LINE OF SAID SOUTHEAST ONE-QUARTER, THENCE S 89°58'27" W FOR 396.00 FEET ALONG A LINE 660.00 FEET SOUTH OF AND PARALLEL WITH NORTH LINE OF SAID SOUTHEAST ONE-QUARTER, THENCE N 00°14'00" E FOR 660.00 FEET ALONG A LINE 396.00 FEET WEST OF AND PARALLEL WITH THE EAST LINE OF SAID SOUTHEAST ONE-QUARTER, THENCE N 89°58'27" E FOR 396.00 FEET ALONG THE NORTH LINE OF SAID SOUTHEAST ONE-QUARTER TO THE POINT OF BEGINNING. ABOVE DESCRIBED TRACT CONTAINS 8.00 ACRES, MORE OR LESS.

DATE 12-14-01

MICHAEL R. SHARP, R.L.S., NE REG. NO. 515

DEDICATION

KNOW ALL MEN BY THESE PRESENTS THAT WE, FRED E. AND VALERIE R. RIDPATH, BEING THE OWNER OF THE PROPERTY DESCRIBED WITHIN THE SURVEYOR'S CERTIFICATE AND EMBRACED WITHIN THIS PLAT HAVE CAUSED SAID LAND TO BE PLATTED INTO LOTS AS SHOWN HEREIN. SAID ADDITION TO BE HEREAFTER KNOWN AS "RIDPATH ACRES", AND WE DO HEREBY RATIFY AND APPROVE OF THE DISPOSITION OF OUR PROPERTY AS SHOWN ON THIS PLAT. IN WITNESS WHEREOF, WE DO HEREBY SET OUR NAMES.

12-14-01

FRED E. RIDPATH

12-14-01

VALERIE R. RIDPATH

ACKNOWLEDGMENT OF NOTARY

STATE OF NEBRASKA

COUNTY OF SARPY

ON THIS 14th DAY OF DECEMBER, 2001, BEFORE ME, THE UNDERSIGNED NOTARY PUBLIC, DULY QUALIFIED AND COMMISSIONED IN AND FOR SAID COUNTY AND STATE, PERSONALLY APPEARED FRED E. RIDPATH, PERSONALLY KNOWN BY ME TO BE THE IDENTICAL PERSON WHOSE NAME IS AFFIXED TO THE OWNER'S CERTIFICATION AND HE DID ACKNOWLEDGE THE EXECUTION THEREOF TO BE HIS VOLUNTARY ACT AND DEED.

12-14-01

NOTARY PUBLIC

ACKNOWLEDGMENT OF NOTARY

STATE OF NEBRASKA

COUNTY OF SARPY

ON THIS 14th DAY OF DECEMBER, 2001, BEFORE ME, THE UNDERSIGNED NOTARY PUBLIC, DULY QUALIFIED AND COMMISSIONED IN AND FOR SAID COUNTY AND STATE, PERSONALLY APPEARED VALERIE R. RIDPATH, PERSONALLY KNOWN BY ME TO BE THE IDENTICAL PERSON WHOSE NAME IS AFFIXED TO THE OWNER'S CERTIFICATION AND SHE DID ACKNOWLEDGE THE EXECUTION THEREOF TO BE HER VOLUNTARY ACT AND DEED.

12-14-01

NOTARY PUBLIC

12-14-01

NOTARY PUBLIC

12-14-01

NOTARY PUBLIC

12-14-01

NOTARY PUBLIC

12-14-01

NOTARY PUBLIC

12-14-01

NOTARY PUBLIC

12-14-01

NOTARY PUBLIC

12-14-01

NOTARY PUBLIC

12-14-01

NOTARY PUBLIC

12-14-01

NOTARY PUBLIC

12-14-01

NOTARY PUBLIC

12-14-01

NOTARY PUBLIC

October 12, 2001 4:08:28 PM  
Drawing: E:\WORK\2001\01-93\01-93.DWG