

LAND SURVEYOR'S CERTIFICATE

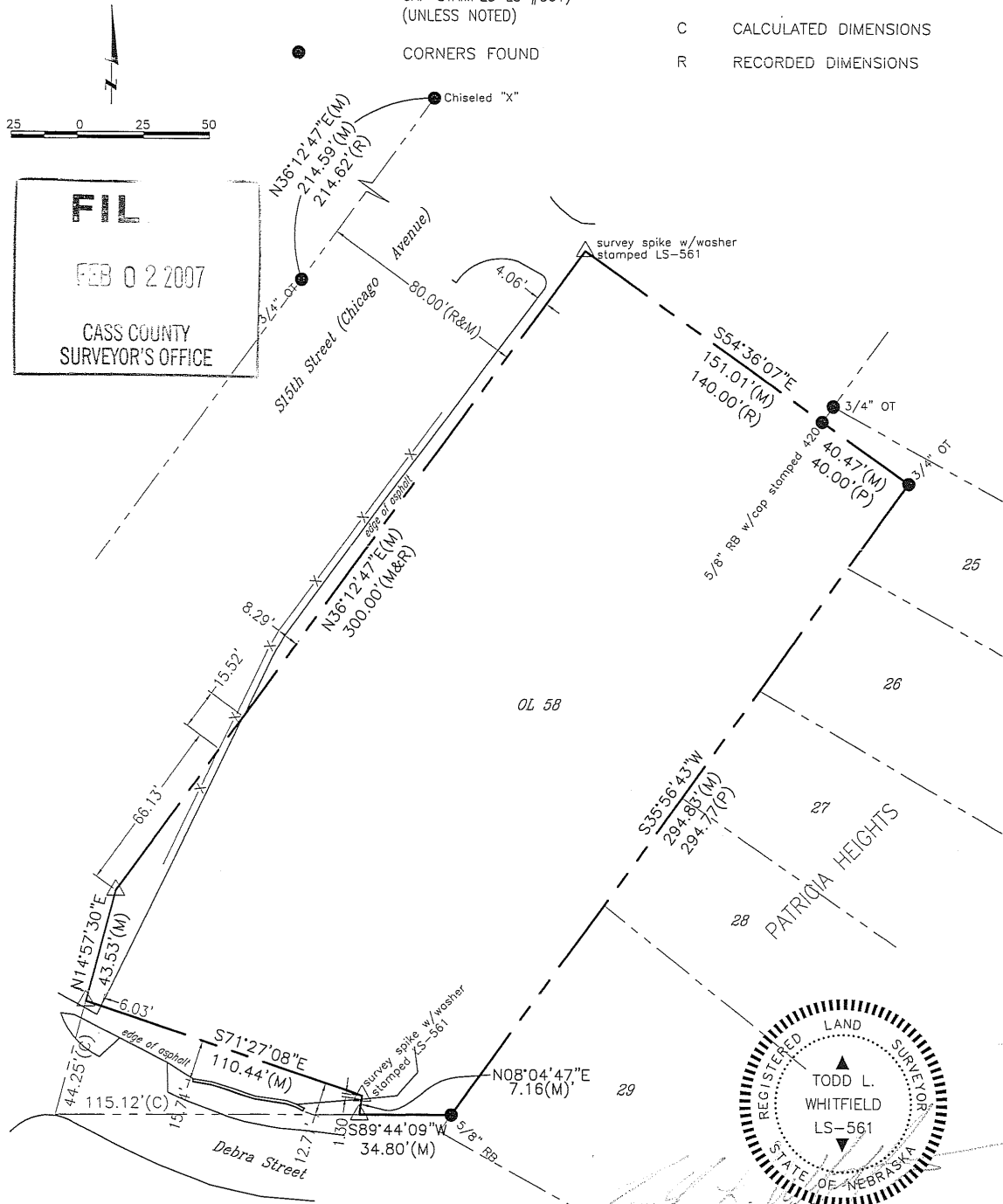
I hereby certify that this plat, map, survey or report was made by me or under my direct supervision and that I am a duly Registered Land Surveyor under the laws of the State of Nebraska.

LEGAL DESCRIPTION:

Lot 58, an outlot in the NE 1/4 NE 1/4 of Section 24, T12N, R13E of the 6th P.M., City of Plattsmouth, Cass County, Nebraska.

LEGEND

---	PROPERTY LINE	OT	OPEN TOP PIPE
—X—	CHAIN LINK FENCE	RB	REBAR
△	CORNERS SET (5/8" REBAR WITH 1 1/4", YELLOW PLASTIC CAP STAMPED LS #561) (UNLESS NOTED)	M	MEASURED DIMENSIONS
●	CORNERS FOUND	P	PLAT DIMENSIONS
		C	CALCULATED DIMENSIONS
		R	RECORDED DIMENSIONS



Date April 7, 2006

Book 06-1 Page 46

Path\Filename SURV\061039\DWG\061039TCERT.DWG

Signature of Land Surveyor

Job Number M061039



Lamp, Rynearson & Associates, Inc.

14710 West Dodge Road, Suite 100
Omaha, Nebraska 68154-2027

WWW.LRA-INC.COM

(Ph) 402.496.2498

(Fax) 402.496.2730