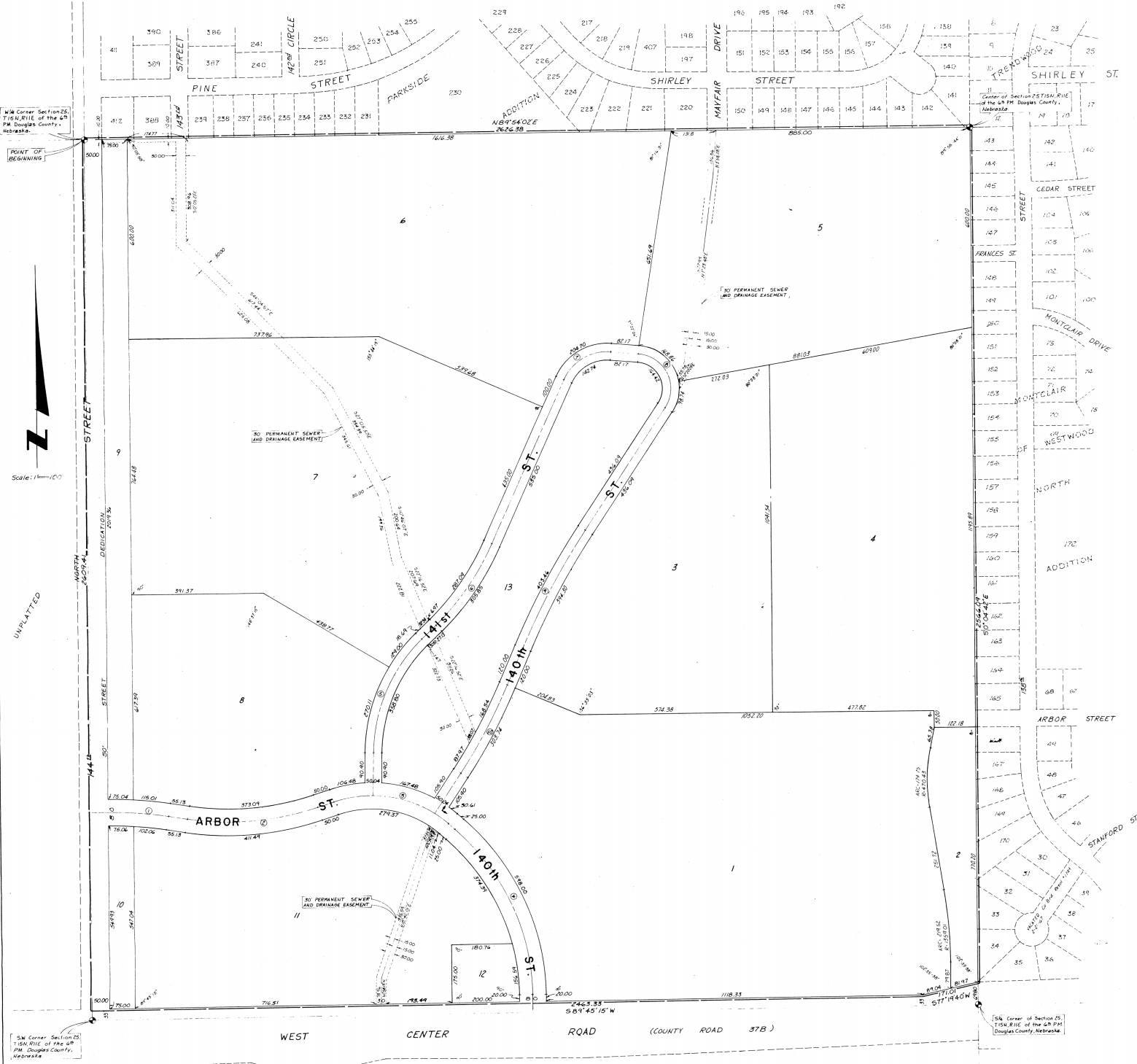


GEORGETOWNE

LOTS 1 THRU 13, INCLUSIVE.
BEING A PLATTING OF PART OF THE SW 1/4 OF SECTION 25, T 15 N, R 11 E, OF 6TH P.M.
DOUGLAS COUNTY, NEBRASKA.



CURVE DATA:

① Δ = 4° 15' 15"	② Δ = 27° 30' 00"	③ Δ = 40° 00' 00"	④ Δ = 80° 00' 00"	⑤ Δ = 44° 30' 00"
D = 506.064	D = 720.018	D = 116.596860	D = 8.503257	D = 11.700048
T = 41.99	T = 200.00	T = 200.00	T = 300.00	T = 200.00
L = 185.54	L = 362.59	L = 342.76	L = 554.88	L = 379.59
R = 1136.54	R = 817.53	R = 342.41	R = 473.81	R = 488.57
⑥ Δ = 21° 30' 00"	⑦ Δ = 71° 00' 00"	⑧ Δ = 118° 14' 37"	⑨ Δ = 10° 30' 00"	⑩ Δ = 101° 50' 00"
D = 220.000	D = 400.000	D = 54.09444	D = 1.62377	D = 150.005
T = 180.00	T = 100.00	T = 175.00	T = 200.00	T = 150.00
L = 296.87	L = 178.72	L = 216.01	L = 319.58	L = 379.16
R = 790.07	R = 140.14	R = 104.67	R = 274.58	R = 1632.44

NEWSPAPER'S CERTIFICATE

I HEREBY CERTIFY that I have made a boundary survey of the subdivision described herein, and that permanent monuments have been placed at all...

Date: Even D. Reid, Registered Land Surveyor #99

INDICATION

KNOW ALL MEN BY THESE PRESENTS: That we, REGIS INVESTMENT, INC. (a Nebraska Corporation), and FRANK KREJCI and JUDITH KREJCI (Husband and Wife)...

NORTHWESTERN NATIONAL BANK OF OMAHA, NEBRASKA

By: Frank Krejci, Judith Krejci, Emil Krejci, Mary Alice Krejci, Robert Schwartzbaugh, Rita Argambricht

ACKNOWLEDGMENT OF NOTARY

STATE OF NEBRASKA COUNTY OF DOUGLAS On this 22nd day of August, 1971, before me a Notary Public...

Witness my hand and official seal the date last aforesaid.

COUNTY TREASURER'S CERTIFICATE

THIS IS TO CERTIFY that I find no regular or special taxes due or delinquent against the property described in the newspaper's certificate and entered in this plat...

ACKNOWLEDGMENT OF NOTARY

STATE OF NEBRASKA COUNTY OF DOUGLAS On this day of 1971, before me, a Notary Public, duly commissioned and qualified...

Witness my hand and official seal the date last aforesaid.

ACKNOWLEDGMENT OF NOTARY

STATE OF NEBRASKA COUNTY OF DOUGLAS On this day of 1971, before me, a Notary Public, duly commissioned and qualified...

Witness my hand and official seal the date last aforesaid.

APPROVAL OF CITY ENGINEER

I HEREBY APPROVE the plat of GEORGETOWNE on this 22nd day of August, 1971.

APPROVAL OF CITY PLANNING BOARD

This plat of GEORGETOWNE was approved by the City Planning Board of the City of Omaha, this 22nd day of SEPTEMBER, 1971.

APPROVAL OF OMAHA CITY COUNCIL

This plat of GEORGETOWNE was approved and accepted by the City Council of Omaha on this 22nd day of September, 1971.

Mayor: [Signature]

City Clerk: [Signature]

FINAL PLAT GEORGETOWNE LAMP RYNEARSON AND TILLY ARCHITECTS ENGINEERS

REVISIONS SHEET 108 OMAHA 01-06-2102 0-21-71

