

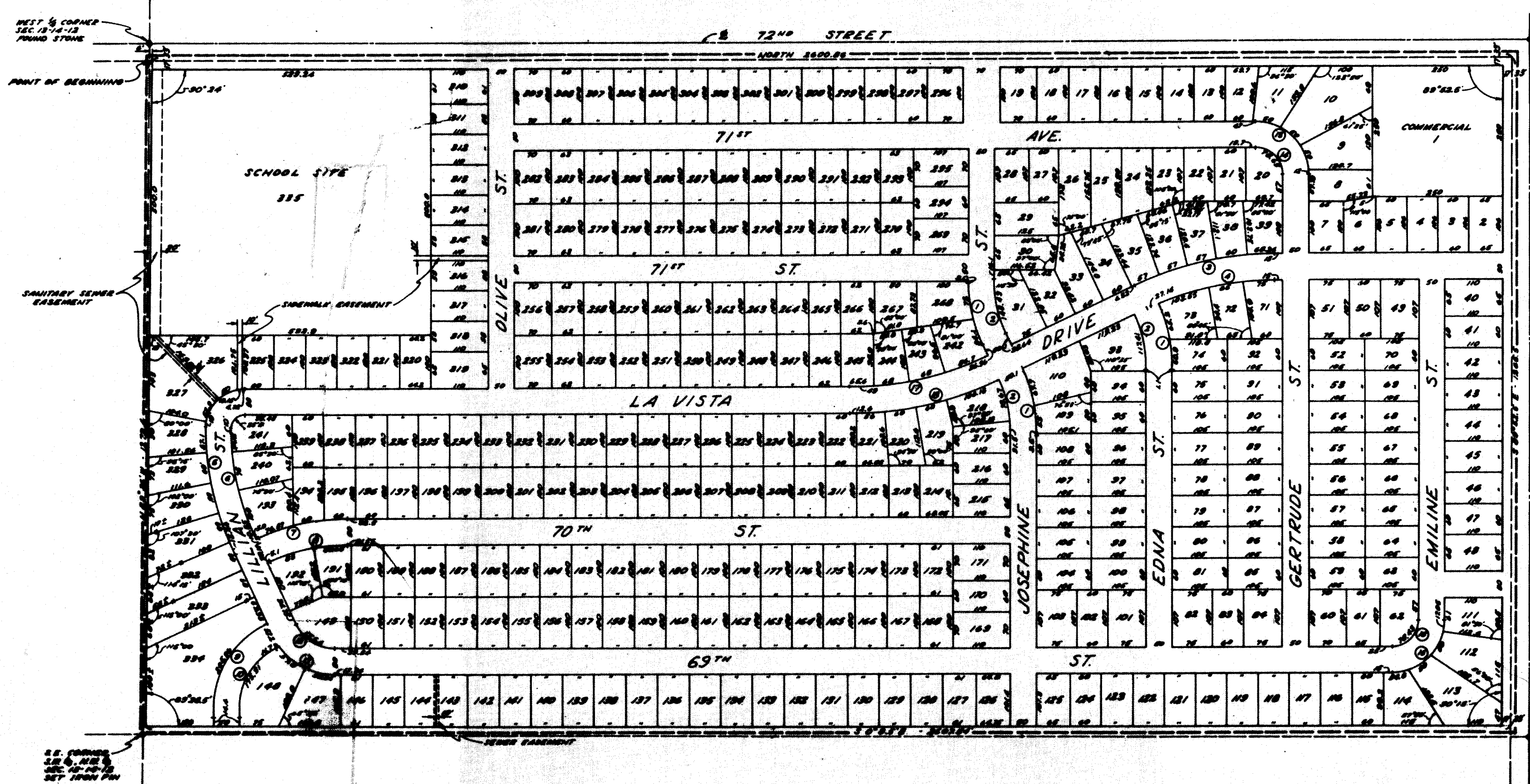
LA VISTA

A SUBDIVISION IN THE WEST HALF OF THE N.W. 1/4, SECTION 13, T-14-N, R-13-E OF THE 6TH P.M. SARPY COUNTY, NEBRASKA

REPLAT



SCALE: 1" = 100'



FOUND IRON PIN
N.W. CORNER, N.W. 1/4
SEC. 13-14-13

This is a Corrective
Plat See Note
Below.

NOTE
CORRECT LOT DIMENSIONS HAVE BEEN
CORRECTLY SHOWN AFFECTING LOTS 6, 31,
102, 147, 181, 182, 219, 340, 341, 342, 380, 386, 397,
REVISOR APRIL 3 1960
GILLESPIE & SCHNEIDER, INC.
CONSULTING ENGINEERS

CURVE DATA				
Δ	T	R	D	L
1 25°00'	64.16'	202.00'	202.00'	126.17'
2 25°00'	62.70'	202.00'	24.735'	102.70'
3 25°00'	61.31'	202.00'	3 174.8'	273.00'
4 25°00'	100.00'	274.01'	2 975'	262.00'
5 25°00'	100.00'	202.14'	14 81.03'	342.00'
6 25°00'	112.00'	202.14'	11 87.16'	202.00'
7 25°00'	60.00'	202.00'	16.324'	102.00'
8 25°00'	70.00'	202.00'	17 20.00'	102.00'
9 25°00'	102.00'	202.00'	21 20.00'	102.00'
10 25°00'	70.00'	202.00'	22 20.00'	102.00'
11 25°00'	61.25'	126.25'	44.324'	146.00'
12 25°00'	30.00'	70.25'	72.3075'	30.25'
13 25°00'	20.25'	102.00'	27.2000'	102.00'
14 25°00'	20.11'	20.00'	114.2016'	20.00'
15 25°00'	20.25'	102.00'	27.2000'	102.00'
16 25°00'	40.00'	20.00'	114.2016'	20.00'
17 25°00'	102.00'	70.00'	2 300'	202.00'
18 25°00'	170.00'	773.00'	2 700'	202.00'

DEDICATION

WE, ALL MEN OF MAJOR CREDIT...
DONOR: DECKER ENTERPRISES, INC.
...
IN WITNESS WHEREOF, WE DO HEREBY SET OUR HANDS THIS 21 DAY OF JULY A.D., 1960.
DONOR: DECKER ENTERPRISES, INC.
Signature: Don Decker, President

ACKNOWLEDGEMENT OF NOTARY

STATE OF NEBRASKA
COUNTY OF DODGE
ON THIS 21 DAY OF JULY, A.D. 1960, BEFORE ME, A NOTARY PUBLIC, DULY COMMISSIONED AND QUALIFIED IN AND FOR SAID COUNTY, PERSONALLY CAME DON DECKER AND HIS WIFE, MARGARET AND WIFE, WHO ARE PERSONALLY KNOWN TO ME TO BE THE IDENTICAL PERSONS WHOSE NAMES ARE AFFIXED TO THE DEDICATION OF THIS PLAT AND THEY ACKNOWLEDGED THE EXECUTION THEREOF TO BE THEIR VOLUNTARY ACT AND DEED; AND FURTHER CAME DON DECKER, PRESIDENT OF DECKER ENTERPRISES, INC. A CORPORATION WHO IS PERSONALLY KNOWN TO BE THE IDENTICAL PERSON WHOSE NAME IS AFFIXED TO THE DEDICATION OF THIS PLAT AND HE ACKNOWLEDGED HIS EXECUTION THEREOF TO BE HIS VOLUNTARY ACT AND DEED AS SUCH OFFICER AND THE VOLUNTARY ACT AND DEED OF SAID CORPORATION AND THE SEAL OF SAID CORPORATION AS THERE TO AFFIXED BY ITS AUTHORITY.
WITNESS MY HAND AND NOTORIAL SEAL AT OMAHA, NEBRASKA, IN SAID COUNTY, THE DATE LAST AFORESAID.
NOTARY PUBLIC: [Signature]
MY COMMISSION EXPIRES ON THE 21 DAY OF JULY, 1962

SURVEYOR'S CERTIFICATE

I HEREBY CERTIFY THAT I HAVE ACCURATELY SURVEYED AND STAKED WITH IRON PINS ALL CORNERS OF ALL LOTS, STREETS, AVENUES, ANGLEMENTS AND BEARS OF ALL CURVES IN LA VISTA, SAID ADDITION IS LOCATED IN THE WEST HALF OF THE N.W. 1/4 SECTION 13, TOWNSHIP 14 NORTH, RANGE 13 EAST OF THE 6TH PRINCIPAL MERIDIAN, SARPY COUNTY, NEBRASKA MORE PARTICULARLY DESCRIBED AS FOLLOWS:
BEGINNING AT A POINT 25' EAST OF THE WEST 1/4 CORNER OF SECTION 13-14-13;
THENCE NORTH (AS BEARINGS) AND PARALLEL WITH THE WEST LINE OF THE N.W. 1/4 OF SAID SEC. 13 FOR A DISTANCE OF 2600.06; THENCE S 89° 58.5' E FOR A DISTANCE OF 1200.5'; THENCE S 0° 30.5' E FOR A DISTANCE OF 2600.06; THENCE N 89° 36' E FOR A DISTANCE OF 1270.0 TO THE POINT OF BEGINNING.
DATE: July 20, 1960
E. K. GILLESPIE, CONSULTING ENGINEER

COUNTY TREASURER'S CERTIFICATE

THIS IS TO CERTIFY THAT I FIND NO REGULAR OR SPECIAL TAXES, DUE OR DELINQUENT AGAINST THE PROPERTY DESCRIBED IN THE SURVEYOR'S CERTIFICATE AND ENBRACED IN THIS PLAT AS SHOWN BY THE RECORDS OF THIS OFFICE.
DATE: July 21, 1960
COUNTY TREASURER: [Signature]

FILED 5-6-60

APPROVAL OF COUNTY SURVEYOR

I HEREBY APPROVE OF THIS PLAT OF LA VISTA, THIS 21 DAY OF JULY, 1960.
COUNTY SURVEYOR: [Signature]

STATE OF NEBRASKA }
SARPY COUNTY }
Filed for record May 6
A. D. 1960 at 10 o'clock A.M.
and recorded in Book # 23
of Plats at page 115
County Clerk
By: [Signature] Deputy