

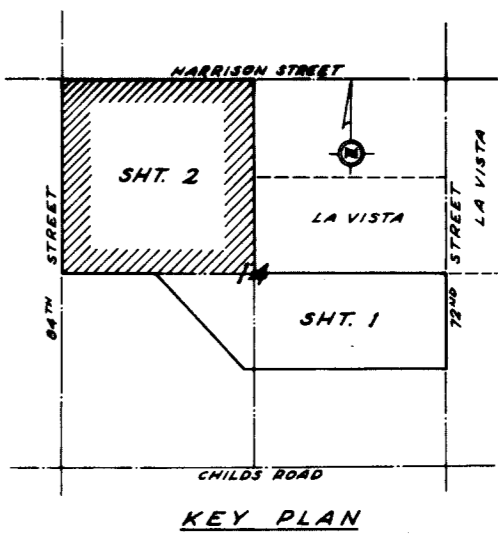
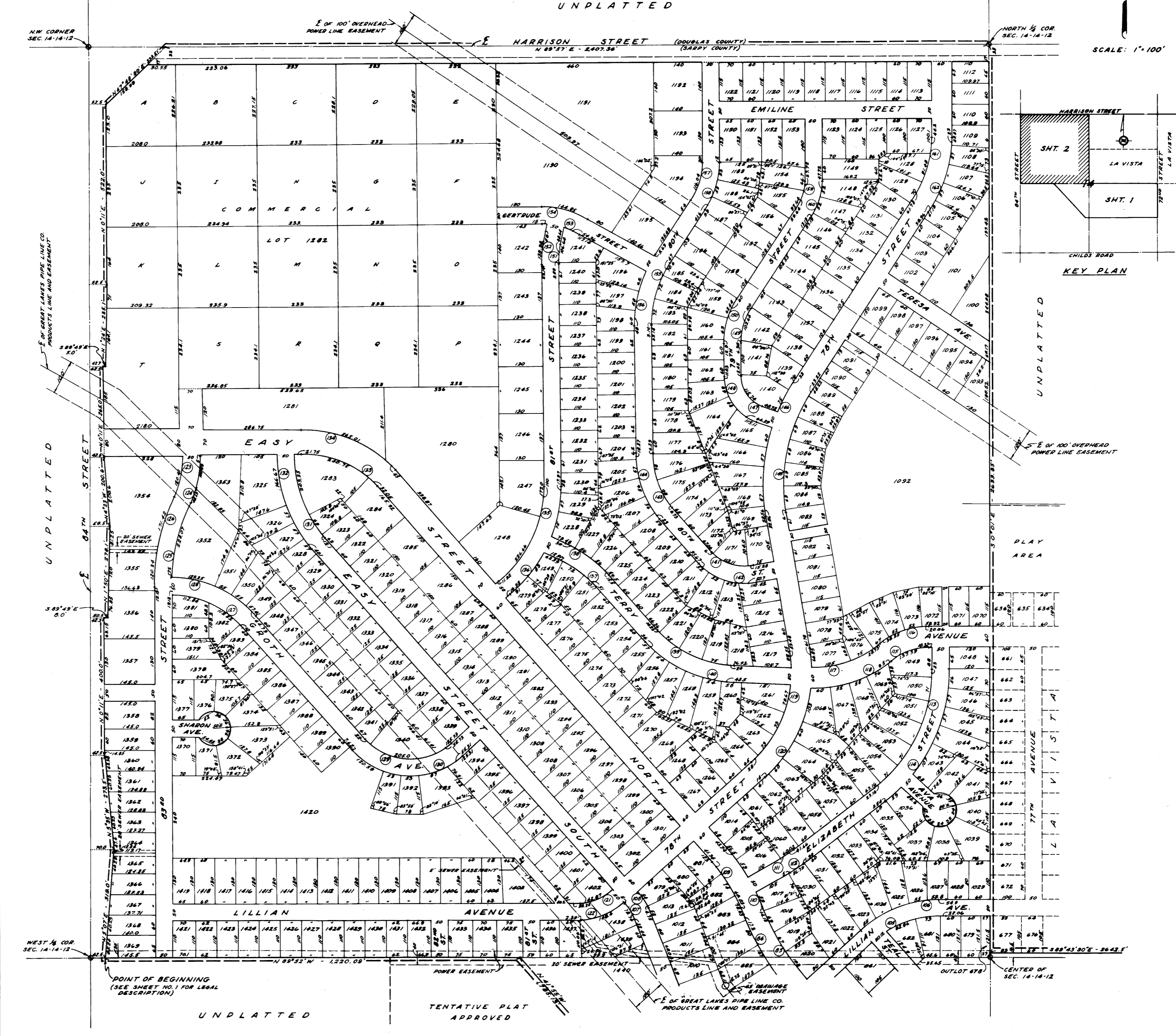


# LA VISTA

A SUBDIVISION LOCATED IN THE NORTH 1/4 OF THE S.E. 1/4, THE S.W. 1/4 AND THE N.W. 1/4 OF SEC. 14, TOWNSHIP 14 NORTH, RANGE 13 EAST OF THE 6TH RM., SARPY COUNTY, NEBRASKA

UNPLATTED

SCALE: 1" = 100'



STATE OF NEBRASKA  
COUNTY OF SARPY  
PLAT NO. 10 # 1  
Dated & Subscribed  
E. Ruff

POINT OF BEGINNING  
(SEE SHEET NO. 1 FOR LEGAL DESCRIPTION)

TENTATIVE PLAT APPROVED

Sheet # 2  
Page 1