

N.W. Cor. Sec. of SW 1/4
Sec. 21-16-12.

N.E. Cor. W 1/2 of SW 1/4
Sec. 21-16-12.

BOOK 502 PAGE 246

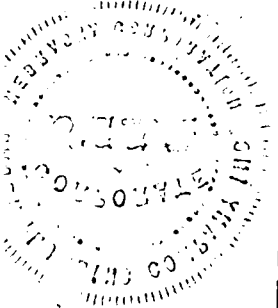
N

all in Douglas County, Nebraska.

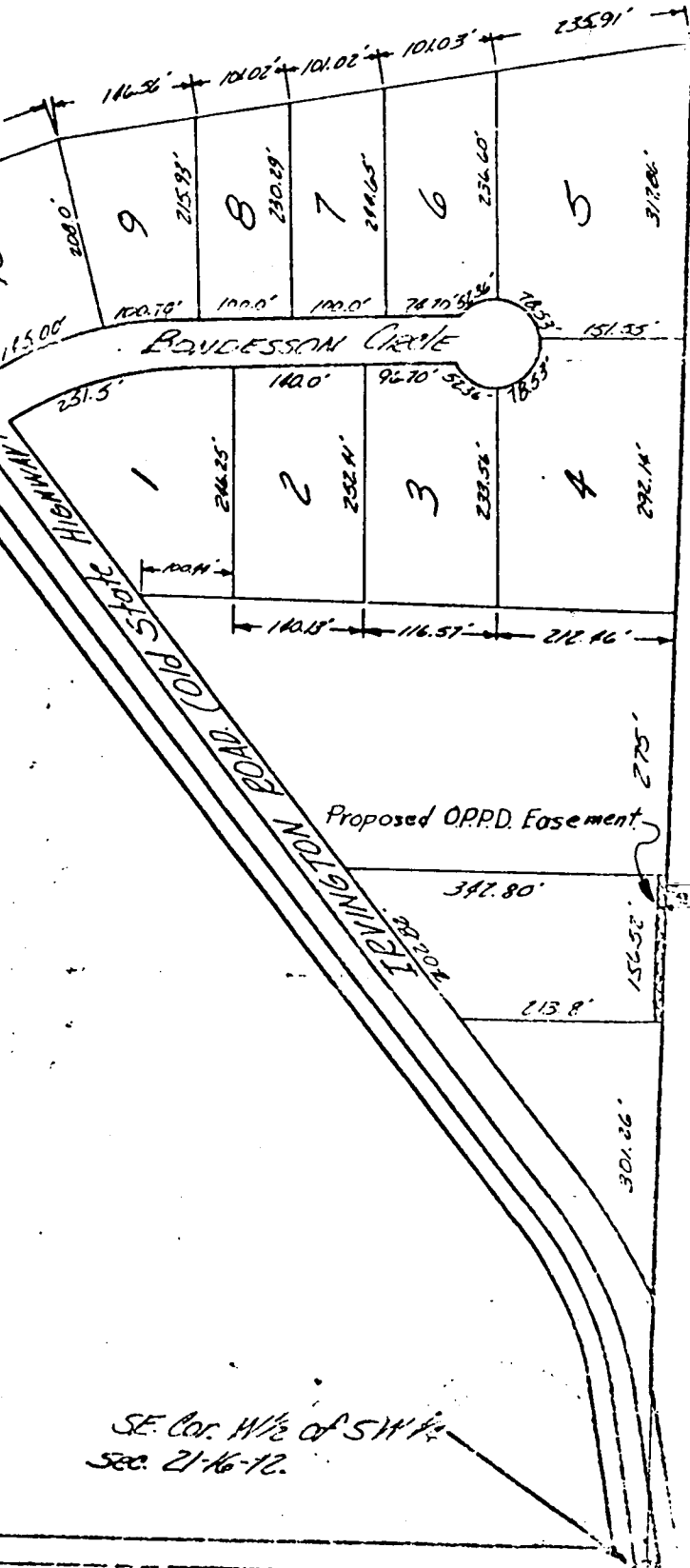
Scale - 1" = 200'

965' 1"

19
ENTERED IN NUMERICAL INDEX AND RECORDED IN THE REGISTER OF DEEDS OFFICE IN DOUGLAS COUNTY, NEBRASKA
ON THE 22 DAY OF August 1927 AT 2:45 P.M. C. HAROLD OSTLER, REGISTER



NEW STATE HIGHWAY #133



SW Cor. of SW 1/4 Sec.
21-16-12.

SE Cor. W 1/2 of SW 1/4
Sec. 21-16-12.