

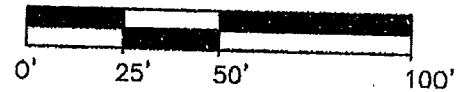
Utility Notes

1. This drawing includes observed evidence of services and utilities evident at the time of survey and those marked by "One Call" locators for the survey performed September 25, 2006. No responsibility or liability is assumed by the surveyor for the failure to show any buried service and/or utility lines even though they may exist. Contact "One Call" (344-3565) prior to any excavation on this site.

2. Utility lines illustrated hereon as solid lines represent field location (as per paint marks or other visible evidence). Utility lines illustrated as dashed or broken lines represent record utility line locations as per the utility company involved.



SCALE : 1" = 50'



Legend of Symbols & Abbreviations

	BUILDING		FIRE HYDRANT
	PROPERTY LINE		POST INDICATOR VALVE
	SANITARY SEWER		POWER RISER
	GAS		POWER TRANSFORMER
	WATER		TELEPHONE RISER
	OVERHEAD POWER		WELL
	TELEPHONE		MAILBOX
	STEEL PIPE FENCE		SPRINKLER VALVE BOX
	CHAIN LINK FENCE		FLARED END SECTION
	MANHOLE		TANKS (ALL SHAPES WITH {LIGHT} HATCH)
	GRATE INLET WITH HOOD		AIR CONDITIONER
	POWER POLE		HANDICAPPED
	STOP SIGN		COLUMN (ROUND)
	INFORMATION SIGN		COLUMN (RECTANGULAR)
	STREET LIGHT		GAS METER
	GROUND LIGHT		CORNERS FOUND (5/8" REBAR WITH 1 1/4" YELLOW PLASTIC CAP STAMPED LS #620 UNLESS NOTED OTHERWISE)
	FLAG POLE		COMPUTED DIMENSION
	GUARD POST		MEASURED DIMENSION
	CLEANOUT		PLAT DIMENSION
	GAS VALVE		RECORD DIMENSION
	GAS WARNING SIGN		RIGHT OF WAY
	GAS VENT		SPECIAL EXCEPTIONS NUMBER
	WATER VALVE		
	AUTO SPRINKLER		
	PRIVATE SIGN		
	80 SQUARE FEET		
	75 SQUARE FEET		419 SQUARE FEET
	UTILITY SHED 36 SQUARE FEET		

NOTE:

See page 1 of 2 for Title Commitment Special Exceptions and Notes.

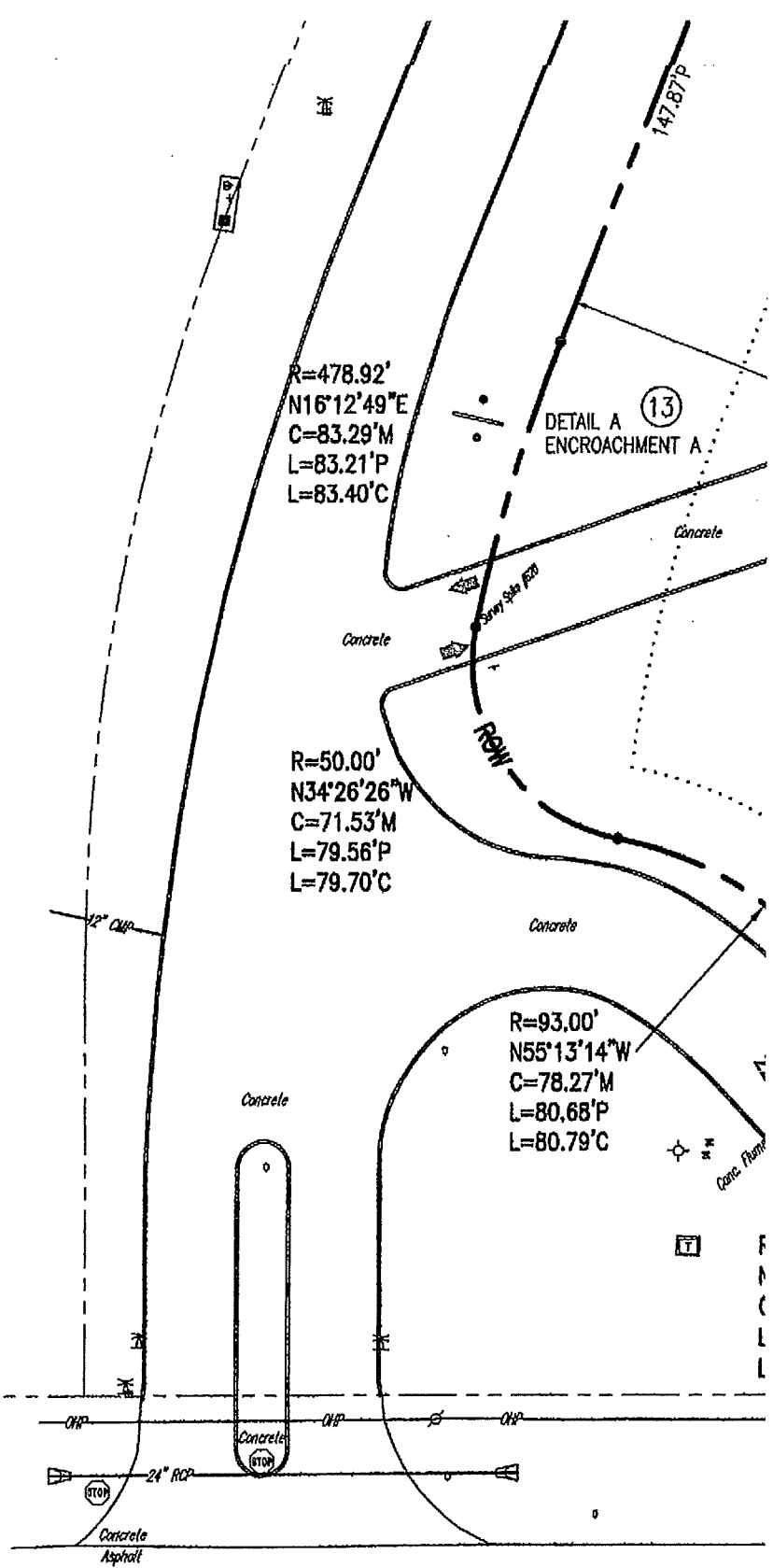
BLOCK 3

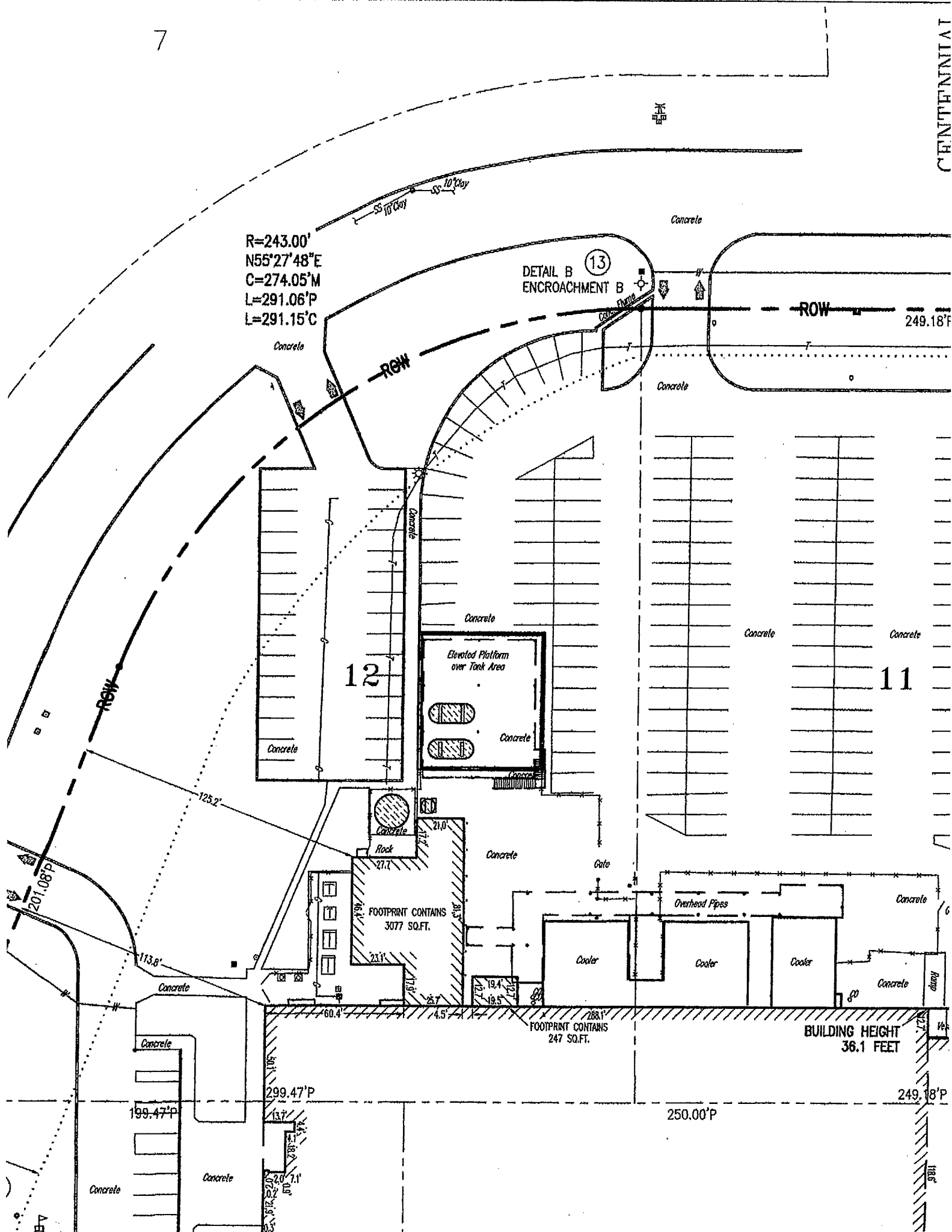
SUMMIT AVENUE
100' PUBLIC RIGHT OF WAY

N21°12'08"E
348.95'P
348.50'P

50' ROW

9





R=243.00'
 N55°27'48"E
 C=274.05'M
 L=291.06'P
 L=291.15'C

DETAIL B
 ENCROACHMENT B

12

11

FOOTPRINT CONTAINS
 3077 SQ.FT.

FOOTPRINT CONTAINS
 247 SQ.FT.

BUILDING HEIGHT
 36.1 FEET

199.47'P

299.47'P

250.00'P

249.18'P

Concrete

Concrete

ROW

ROW

249.18'P

Concrete

Concrete

Concrete

Concrete

Concrete

Concrete

Concrete

Cooler

Cooler

Cooler

Overhead Pipes

Gate

Concrete

Rock

Elevated Platform
 over Tank Area

Concrete

Concrete

Concrete

Concrete

Concrete

Concrete

Concrete

Concrete

Concrete

Concrete

Concrete

Concrete

Concrete

Concrete

Concrete

Concrete

Concrete

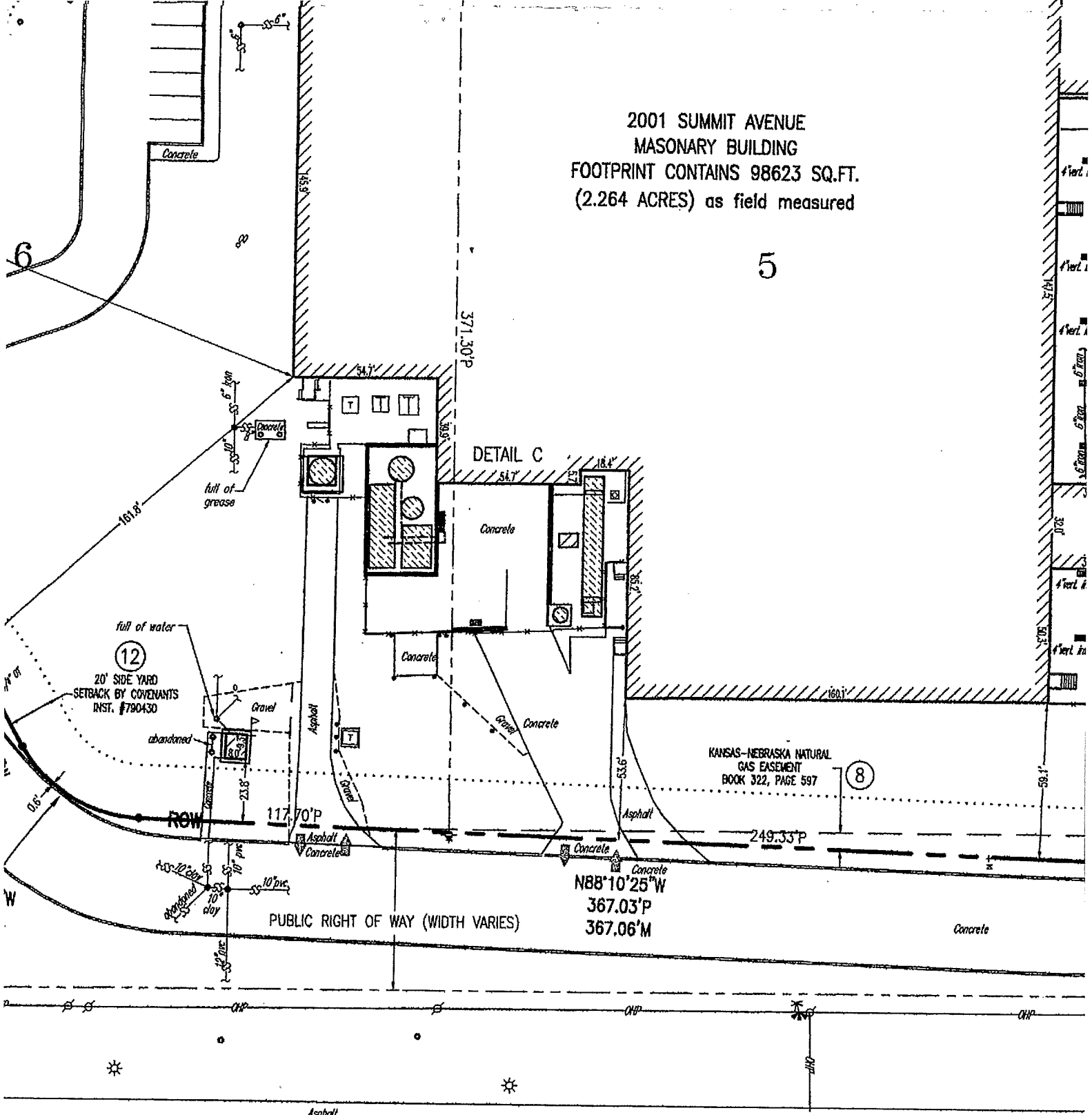
Concrete

Concrete

Concrete

2001 SUMMIT AVENUE
 MASONRY BUILDING
 FOOTPRINT CONTAINS 98623 SQ.FT.
 (2.264 ACRES) as field measured

5



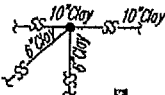
U.S. HIGHWAY #6

BLOCK 2

"I" STREET

100' PUBLIC RIGHT OF WAY

N89°50'28"E
499.18'P
499.12'M



(13)
ENCROACHMENT C

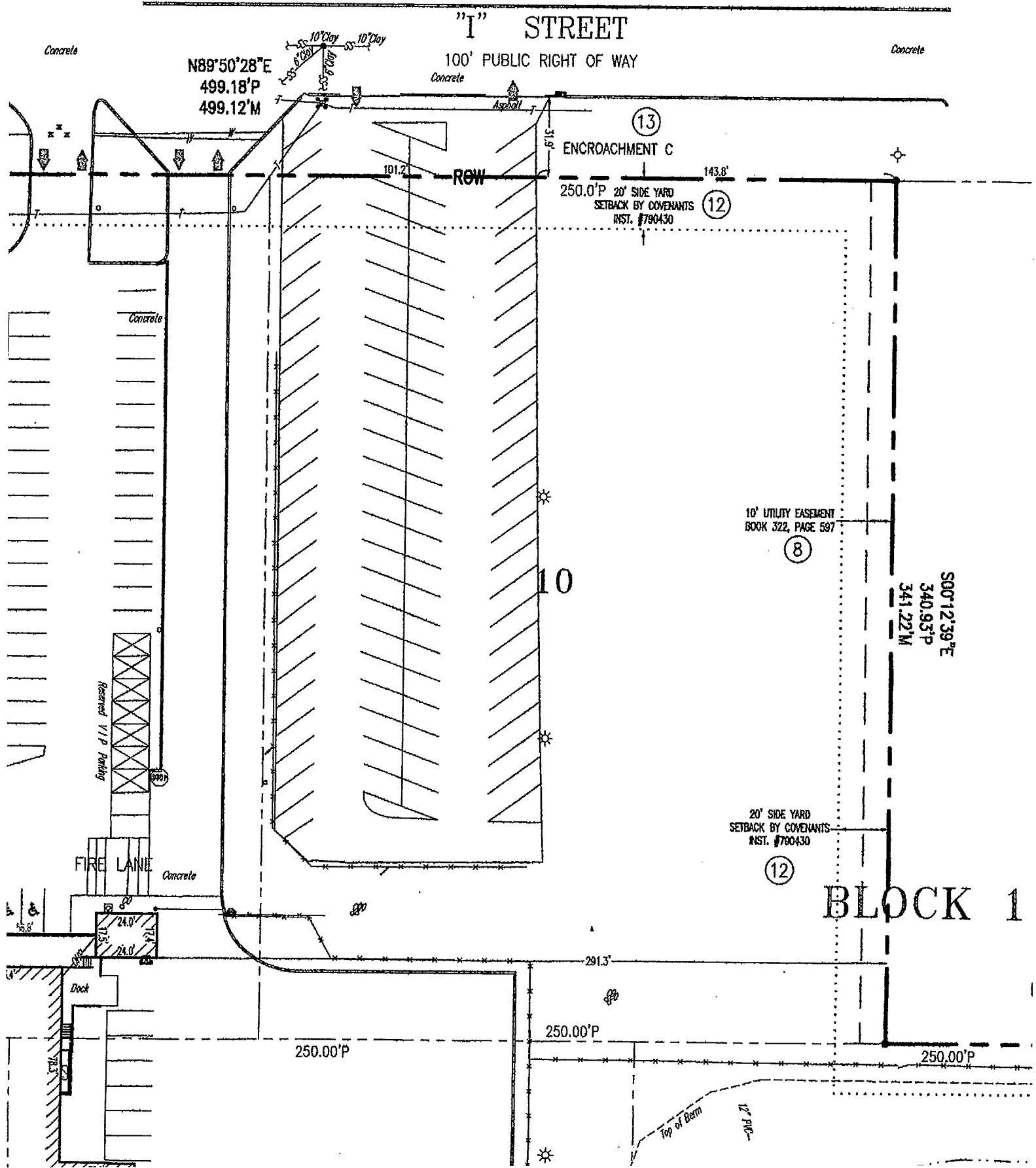
250.0'P 20' SIDE YARD
SETBACK BY COVENANTS
INST. #790430 (12)

10' UTILITY EASEMENT
BOOK 322, PAGE 597
(8)

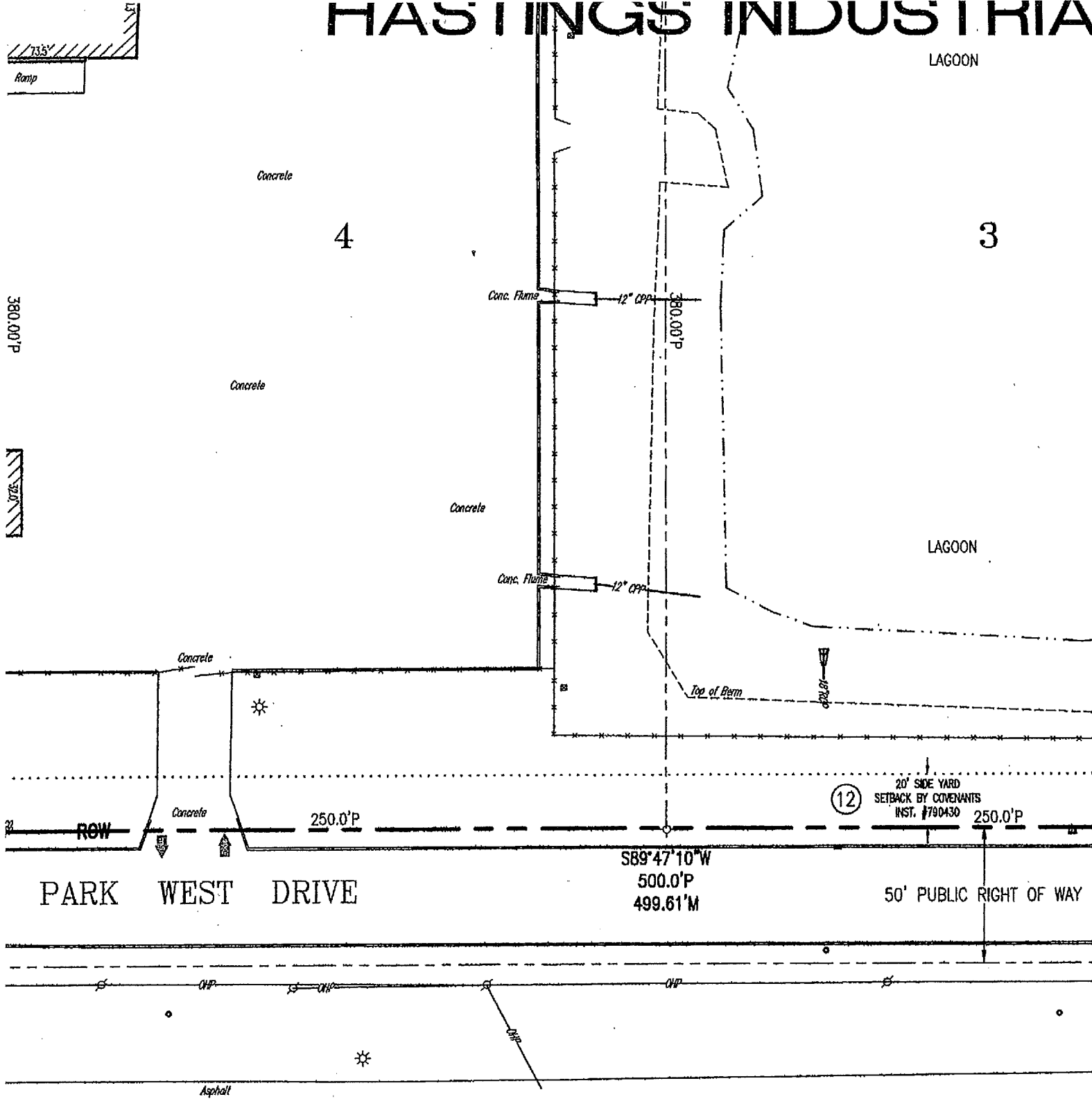
S00°12'39"E
340.93'P
341.22'M

20' SIDE YARD
SETBACK BY COVENANTS
INST. #790430
(12)

BLOCK 1



HASTINGS INDUSTRIA



Lamp, Rynearson & Associates, Inc.

WWW.LRA-INC.COM

14710 West Dodge Road, Suite 100
Omaha, Nebraska 68154-2027

(Ph) 402.496.2498
(Fax) 402.496.2730

LRA PROJ.#M091029
DWG 091029 ALTA

RECORD LEGAL DESCRIPTION

All of Lots Three (3), Four (4), Five (5), Six (6), Ten (10), Eleven (11) and Twelve (12), Block One (1), all in Hastings INDUSTRIAL PARK WEST, City of Hastings, Adams County, Nebraska, according to the recorded plat thereof.

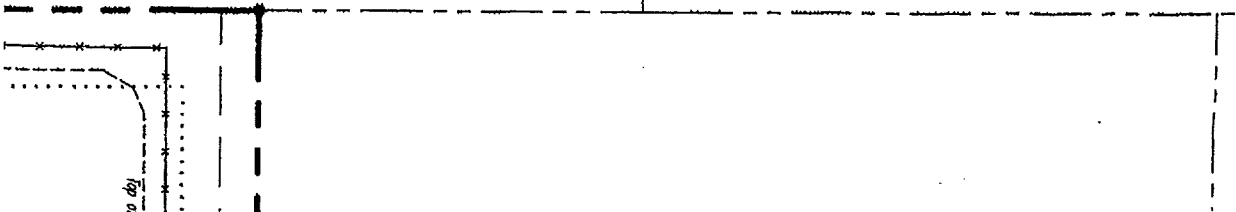
NOTE: The above described land is the same as described within the Old Republic National Title Insurance Company issued through Spence Title Services, Inc., File No. TA-56958 bearing an Effective Date of February 2, 2010 at 8:00 A.M. with a Revision Date of February 16, 2010 at 10:15 A.M.

9

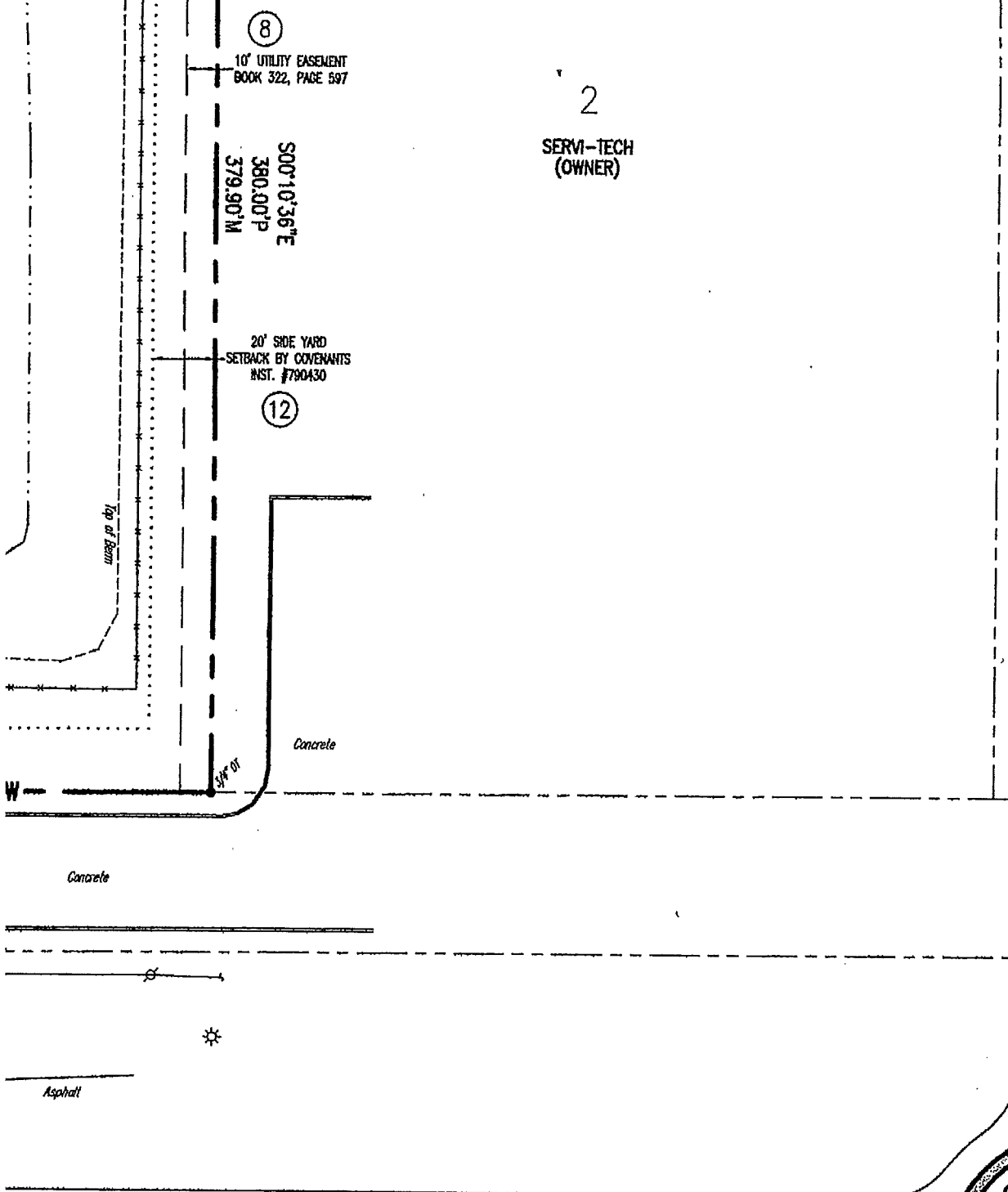
SCHERBARTH INC.
(OWNER)

8

3°E
P
M



PARK WEST

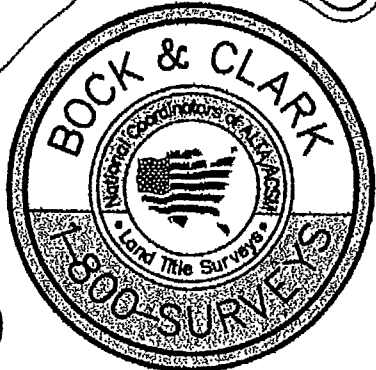


2

SERVI-TECH
(OWNER)

Bock & Clark's National Surveyors Network
National Coordinators of ALTA/ACSM Land Title Surveys

537 North Cleveland—Massillon Road Akron, Ohio 44333
Phone: (800) Surveys, Fax: (330) 666-3608 www.1800surveys.com



ALTA/ACSM LAND TITLE SURVEY
PREPARED FOR:

DATE: May 13, 2009
Project No. 200900451-1

Sheet 2 of 2