

NUM PAGES 3



ADAMS COUNTY, NE  
FILED

INST # **20064745**

DOC TAX PD CK#

FEES 80.50 PD 80.50 CK# 3061+

CHG ACCT#

'06 OCT 20 10:37

RETEES: CASH R.O.D. CK#

REC'D Tyler - Access Title

RETURN Access Title

Hastings NE 68901

*Janice O. Johnson*

REGISTER OF DEEDS

NUM: Hastings Industrial Park West

RD COMP: X 11:50

COMPARE: vg

CADAS: AO ✓

RESERVED FOR REGISTER OF DEEDS RECORDING SPACE  
ADAMS COUNTY NE

**Filmed**

**on**

**35 m. m.**



**RECORD LEGAL DESCRIPTION**

All of Lots Three (3), Four (4), Five (5), Six (6), Ten (10), Eleven (11) and Twelve (12), Block One (1), sit in Hastings Industrial Park West, City of Hastings, Adams County, Nebraska, according to the recorded plat thereon.

NOTE: The above described land is the same as described within the Lanyon's Title Corporation File No. 004-033 bearing an effective date of March 30, 2005 at 8:00 A.M.

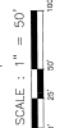
**BLOCK 2**

**BLOCK 3**

**Utility Notes**

1. Utility locations are shown as of the date of this survey. It is the responsibility of the user of this survey to verify the location of all utilities shown on this survey. It is the responsibility of the user of this survey to verify the location of all utilities shown on this survey. It is the responsibility of the user of this survey to verify the location of all utilities shown on this survey.

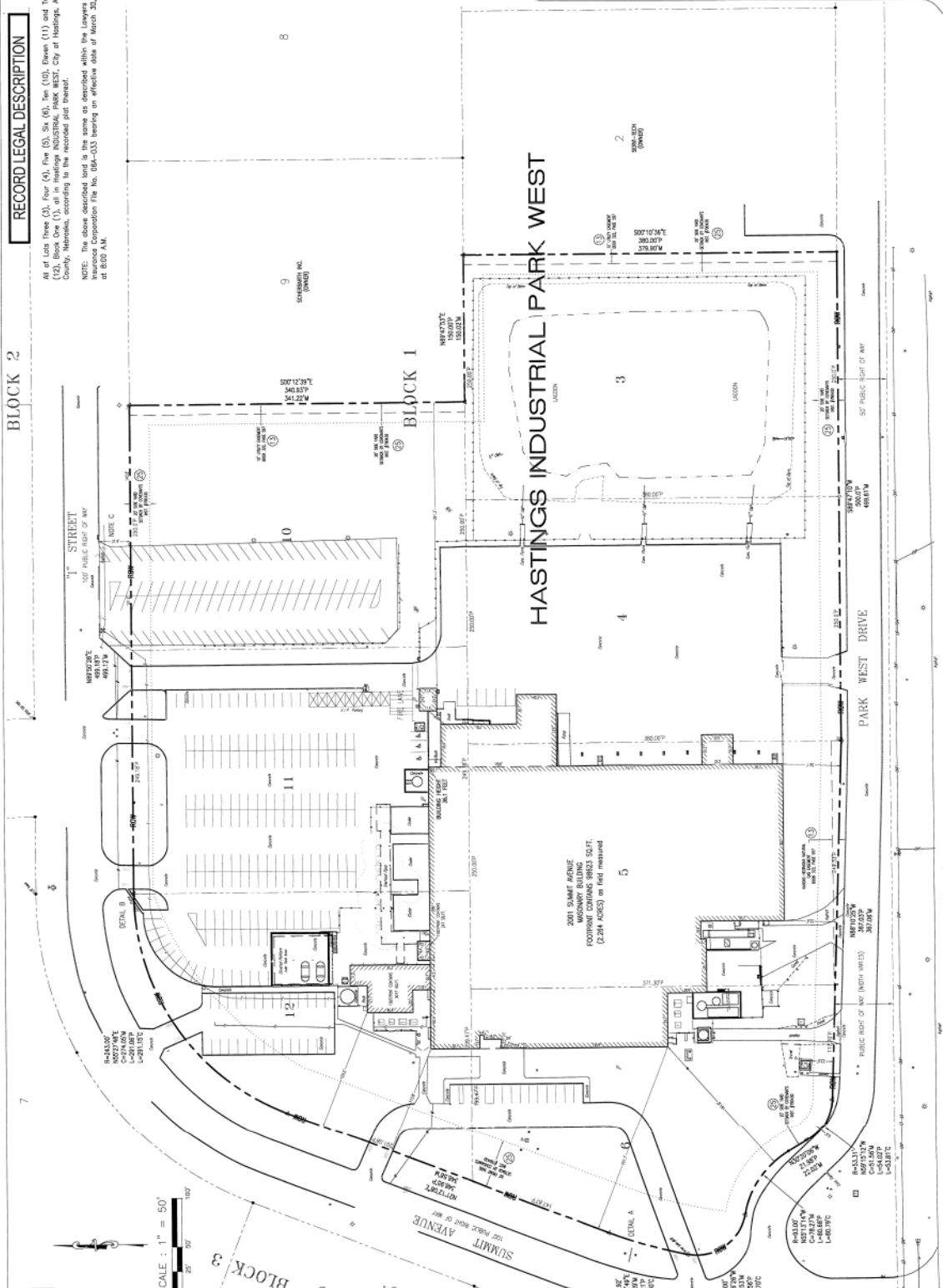
2. Utility lines indicated herein to add line represent field location (in part) records or other utility records. Utility lines indicated as shown or broken lines represent record utility lines.



**Legend of Symbols & Abbreviations**

—	PROPOSED LINE
—	EXISTING LINE
—	UNDERGROUND POWER
—	OVERHEAD POWER
—	3" IRON PIPE EMBASE
—	6" IRON PIPE EMBASE
—	12" IRON PIPE EMBASE
—	18" IRON PIPE EMBASE
—	24" IRON PIPE EMBASE
—	30" IRON PIPE EMBASE
—	36" IRON PIPE EMBASE
—	42" IRON PIPE EMBASE
—	48" IRON PIPE EMBASE
—	54" IRON PIPE EMBASE
—	60" IRON PIPE EMBASE
—	66" IRON PIPE EMBASE
—	72" IRON PIPE EMBASE
—	78" IRON PIPE EMBASE
—	84" IRON PIPE EMBASE
—	90" IRON PIPE EMBASE
—	96" IRON PIPE EMBASE
—	102" IRON PIPE EMBASE
—	108" IRON PIPE EMBASE
—	114" IRON PIPE EMBASE
—	120" IRON PIPE EMBASE
—	126" IRON PIPE EMBASE
—	132" IRON PIPE EMBASE
—	138" IRON PIPE EMBASE
—	144" IRON PIPE EMBASE
—	150" IRON PIPE EMBASE
—	156" IRON PIPE EMBASE
—	162" IRON PIPE EMBASE
—	168" IRON PIPE EMBASE
—	174" IRON PIPE EMBASE
—	180" IRON PIPE EMBASE
—	186" IRON PIPE EMBASE
—	192" IRON PIPE EMBASE
—	198" IRON PIPE EMBASE
—	204" IRON PIPE EMBASE
—	210" IRON PIPE EMBASE
—	216" IRON PIPE EMBASE
—	222" IRON PIPE EMBASE
—	228" IRON PIPE EMBASE
—	234" IRON PIPE EMBASE
—	240" IRON PIPE EMBASE
—	246" IRON PIPE EMBASE
—	252" IRON PIPE EMBASE
—	258" IRON PIPE EMBASE
—	264" IRON PIPE EMBASE
—	270" IRON PIPE EMBASE
—	276" IRON PIPE EMBASE
—	282" IRON PIPE EMBASE
—	288" IRON PIPE EMBASE
—	294" IRON PIPE EMBASE
—	300" IRON PIPE EMBASE
—	306" IRON PIPE EMBASE
—	312" IRON PIPE EMBASE
—	318" IRON PIPE EMBASE
—	324" IRON PIPE EMBASE
—	330" IRON PIPE EMBASE
—	336" IRON PIPE EMBASE
—	342" IRON PIPE EMBASE
—	348" IRON PIPE EMBASE
—	354" IRON PIPE EMBASE
—	360" IRON PIPE EMBASE
—	366" IRON PIPE EMBASE
—	372" IRON PIPE EMBASE
—	378" IRON PIPE EMBASE
—	384" IRON PIPE EMBASE
—	390" IRON PIPE EMBASE
—	396" IRON PIPE EMBASE
—	402" IRON PIPE EMBASE
—	408" IRON PIPE EMBASE
—	414" IRON PIPE EMBASE
—	420" IRON PIPE EMBASE
—	426" IRON PIPE EMBASE
—	432" IRON PIPE EMBASE
—	438" IRON PIPE EMBASE
—	444" IRON PIPE EMBASE
—	450" IRON PIPE EMBASE
—	456" IRON PIPE EMBASE
—	462" IRON PIPE EMBASE
—	468" IRON PIPE EMBASE
—	474" IRON PIPE EMBASE
—	480" IRON PIPE EMBASE
—	486" IRON PIPE EMBASE
—	492" IRON PIPE EMBASE
—	498" IRON PIPE EMBASE
—	504" IRON PIPE EMBASE
—	510" IRON PIPE EMBASE
—	516" IRON PIPE EMBASE
—	522" IRON PIPE EMBASE
—	528" IRON PIPE EMBASE
—	534" IRON PIPE EMBASE
—	540" IRON PIPE EMBASE
—	546" IRON PIPE EMBASE
—	552" IRON PIPE EMBASE
—	558" IRON PIPE EMBASE
—	564" IRON PIPE EMBASE
—	570" IRON PIPE EMBASE
—	576" IRON PIPE EMBASE
—	582" IRON PIPE EMBASE
—	588" IRON PIPE EMBASE
—	594" IRON PIPE EMBASE
—	600" IRON PIPE EMBASE
—	606" IRON PIPE EMBASE
—	612" IRON PIPE EMBASE
—	618" IRON PIPE EMBASE
—	624" IRON PIPE EMBASE
—	630" IRON PIPE EMBASE
—	636" IRON PIPE EMBASE
—	642" IRON PIPE EMBASE
—	648" IRON PIPE EMBASE
—	654" IRON PIPE EMBASE
—	660" IRON PIPE EMBASE
—	666" IRON PIPE EMBASE
—	672" IRON PIPE EMBASE
—	678" IRON PIPE EMBASE
—	684" IRON PIPE EMBASE
—	690" IRON PIPE EMBASE
—	696" IRON PIPE EMBASE
—	702" IRON PIPE EMBASE
—	708" IRON PIPE EMBASE
—	714" IRON PIPE EMBASE
—	720" IRON PIPE EMBASE
—	726" IRON PIPE EMBASE
—	732" IRON PIPE EMBASE
—	738" IRON PIPE EMBASE
—	744" IRON PIPE EMBASE
—	750" IRON PIPE EMBASE
—	756" IRON PIPE EMBASE
—	762" IRON PIPE EMBASE
—	768" IRON PIPE EMBASE
—	774" IRON PIPE EMBASE
—	780" IRON PIPE EMBASE
—	786" IRON PIPE EMBASE
—	792" IRON PIPE EMBASE
—	798" IRON PIPE EMBASE
—	804" IRON PIPE EMBASE
—	810" IRON PIPE EMBASE
—	816" IRON PIPE EMBASE
—	822" IRON PIPE EMBASE
—	828" IRON PIPE EMBASE
—	834" IRON PIPE EMBASE
—	840" IRON PIPE EMBASE
—	846" IRON PIPE EMBASE
—	852" IRON PIPE EMBASE
—	858" IRON PIPE EMBASE
—	864" IRON PIPE EMBASE
—	870" IRON PIPE EMBASE
—	876" IRON PIPE EMBASE
—	882" IRON PIPE EMBASE
—	888" IRON PIPE EMBASE
—	894" IRON PIPE EMBASE
—	900" IRON PIPE EMBASE
—	906" IRON PIPE EMBASE
—	912" IRON PIPE EMBASE
—	918" IRON PIPE EMBASE
—	924" IRON PIPE EMBASE
—	930" IRON PIPE EMBASE
—	936" IRON PIPE EMBASE
—	942" IRON PIPE EMBASE
—	948" IRON PIPE EMBASE
—	954" IRON PIPE EMBASE
—	960" IRON PIPE EMBASE
—	966" IRON PIPE EMBASE
—	972" IRON PIPE EMBASE
—	978" IRON PIPE EMBASE
—	984" IRON PIPE EMBASE
—	990" IRON PIPE EMBASE
—	996" IRON PIPE EMBASE
—	1002" IRON PIPE EMBASE

NOTE: See page 2 of 2 for Title Commitment, Special Exceptions and Notes.



**Bock & Clark's National Surveyors Network**  
 National Coordinators of ALTA/ACSM Land Title Surveys  
 537 North Cleveland-Mission Road  
 Akron, Ohio 44333  
 Phone: (800) Surveys, Fax: (330) 666-2608 www.1800surveys.com



**ALTA/ACSM LAND TITLE SURVEY**  
 PREPARED FOR:  
 DATE: April 15, 2008  
 Project No.: 20080219 / 13  
 Sheet: 1 of 2