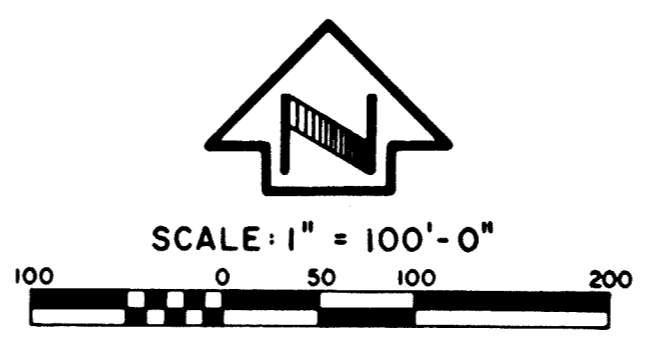
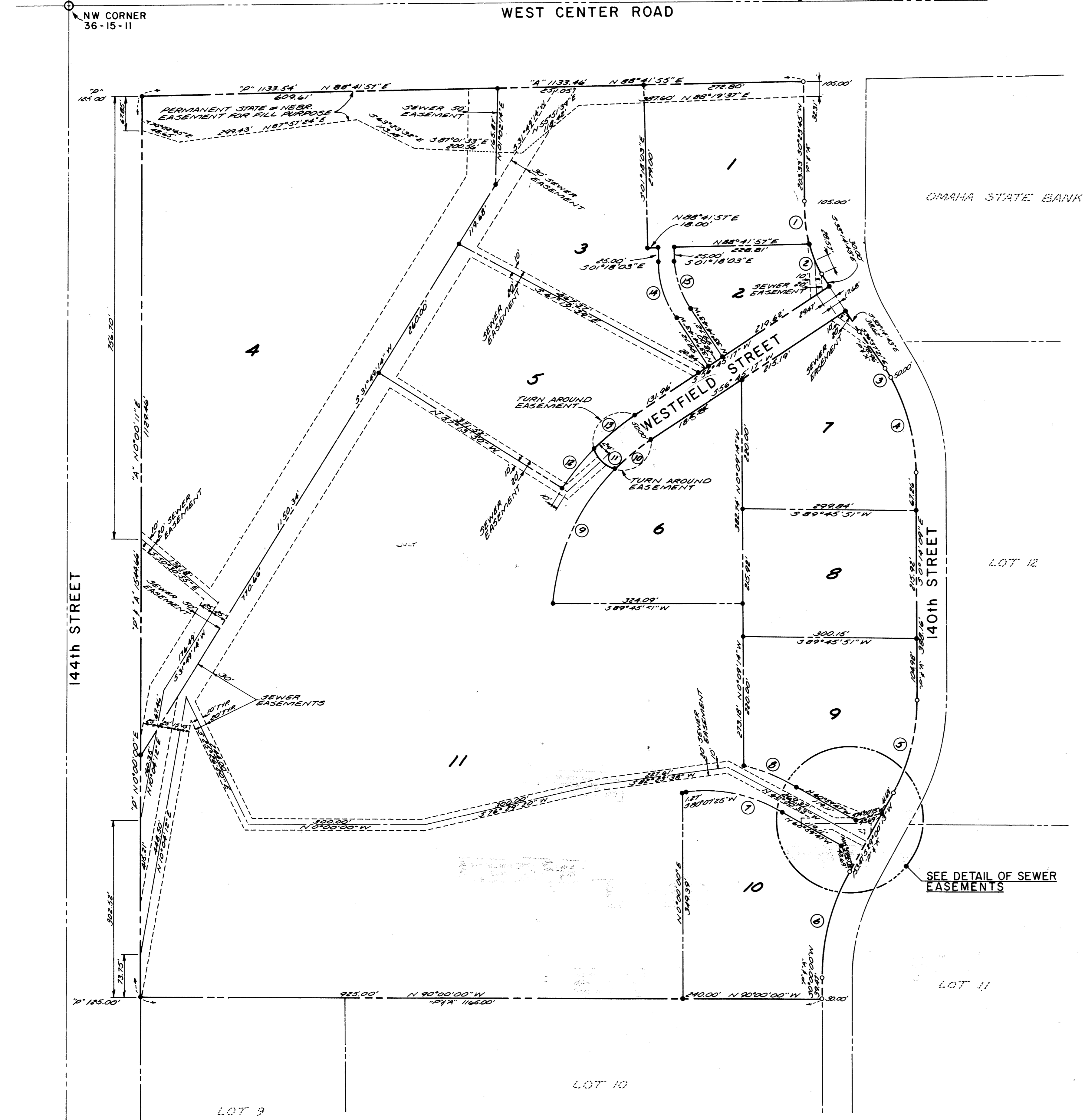
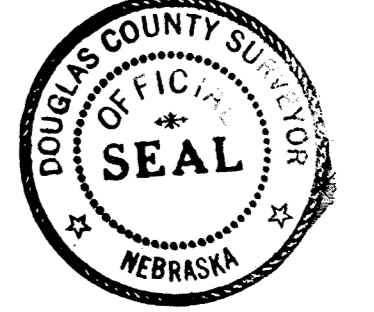


G767  
OMAHA IND. FOUND. REPLAT I

# OMAHA INDUSTRIAL FOUNDATION DISTRICT NO. 4 REPLAT I

A REPLAT OF LOT 13, OMAHA INDUSTRIAL FOUNDATION DISTRICT NO. 4, A SUBDIVISION IN THE WEST HALF OF SECTION 36,  
TOWNSHIP 15 NORTH, RANGE 11 EAST OF THE SIXTH PRINCIPAL MERIDIAN IN DOUGLAS COUNTY, NEBRASKA



LEGEND

---	SECTION LINE
---	PROPERTY LINE
---	EASEMENT
①	CURVE NUMBER
"P"	PLATTED
"A"	ACTUAL
○	PROPERTY CORNER FOUND
●	PROPERTY CORNER SET

COUNTY SURVEYOR'S CERTIFICATE

This plat of Omaha Industrial Foundation District No. 4, Replat I; was revised by the Douglas County Surveyor's Office on this 13th day of July, 1983, A.D.

Thomas D'Angelo  
Douglas County Surveyor

DEDICATION

KNOW ALL MEN BY THESE PRESENTS: That we, Dale Tekolste, President and R. Steven Thompson, Secretary, of Omaha Industrial Foundation, a Nebraska Corporation; and Virgil J. Haggart Jr., Trustee; being the sole owners and proprietors of the land embraced within this plat and described in the Surveyor's Certificate, have caused the same to be subdivided into lots and streets, said subdivision to be known as Omaha Industrial Foundation District No. 4, Replat I; the lots to be numbered as shown (Lots 1 through 11 inclusive), and we approve the disposition of the property as shown on this plat and we hereby dedicate to the public for the public use the streets, circles and avenues as shown herein and we do also grant the easements shown on the plat to the agencies designated and their assigns for the purposes noted. We do further grant a perpetual license in favor of and granting to the Omaha Public Power District, and any company which has been granted a franchise to provide a Cable Television System within the boundaries of this plat, and the Northwestern Bell Telephone Company their successors and assigns, to erect and operate, maintain, repair and, renew underground cables or conduits, poles with the necessary supports, sustaining wires, crossarms, guys and anchors and other instrumentalities, and extend thereon wire for the carrying and transmission of electric current for light, heat, power and for the transmission of signals and sounds of all kinds including signals provided by a Cable Television System, and the reception on, over, through, under and across a five (5) foot wide strip of land abutting the front and the side boundary lines of all lots; an eight (8) foot wide strip of land abutting the rear boundary lines of all interior lots and all exterior lot that are adjacent to presently platted and recorded lots; and a sixteen (16) foot wide strip of land abutting the rear boundary lines of all exterior lots that are not adjacent to presently platted and recorded lots. The term exterior lots is herein defined as those lots forming the outer perimeter of the described addition. The sixteen (16) foot wide easement will be reduced to an eight (8) foot wide strip when the adjacent land is surveyed, platted and recorded. We do further grant a perpetual easement to the Metropolitan Utilities District of Omaha, their successors and assigns to erect, install, operate, maintain, repair and renew pipelines, hydrants, and other related facilities; and to extend thereon pipes for the transmission of gas and water on, through, under and across a five (5) foot wide strip of land abutting all cul-de-sac streets. No permanent buildings or retaining walls shall be placed in the above described easement ways, but the same may be used for gardens, shrubs, landscaping and other purposes that do not then or later interfere with the aforesaid uses or rights herein granted.

IN WITNESS WHEREOF Omaha Industrial Foundation and Virgil J. Haggart Jr., Trustee, have caused the due execution of this Dedication this 3th day of July, 1983.

OMAHA INDUSTRIAL FOUNDATION By Dale Tekolste, President  
By R. Steven Thompson, Secretary

ACKNOWLEDGEMENT OF NOTARY

STATE OF NEBRASKA) COUNTY OF DOUGLAS) Before me, a notary public qualified in said county personally came Dale Tekolste, President and Secretary respectively of OMAHA INDUSTRIAL FOUNDATION, a corporation, known to me to be the President and Secretary, and the identical persons who signed the foregoing dedication, and each of them acknowledged the execution thereof to be his voluntary act and deed as such officer and the voluntary act and deed of said corporation, and that its corporate seal was thereto affixed by its authority.

WITNESS my hand and notary seal on this 3th day of July, 1983.

Notary Public  
My Commission expires 9 June 20, 1985

ACKNOWLEDGEMENT OF NOTARY

STATE OF NEBRASKA) COUNTY OF DOUGLAS) Before me, a notary public qualified in said county personally came Virgil J. Haggart Jr., known to me to be Trustee, and the identical person who signed the foregoing dedication, and he acknowledged the execution thereof to be his voluntary act and deed as such trustee.

WITNESS my hand and notary seal on this 8th day of July, 1983.

Notary Public  
My Commission expires July 31, 1982

COUNTY TREASURER'S CERTIFICATE

This is to certify that I find no regular or special taxes due or delinquent against the property described in the Surveyor's Certificate and embraced in this plat as shown by records of this office.

Dated this 4th day of AUGUST, 1983.  
Sam J. Howell, County Treasurer

APPROVALS OF CITY ENGINEER OF OMAHA

I hereby approve this plat of Omaha Industrial Foundation District No. 4, Replat I; (lots 1 through 11 inclusive) as to the Design Standards this 29th day of July, 1983.

Sam J. Deurmann  
City Engineer

I hereby certify that adequate provisions have been made for compliance with Chapter 53 of the Omaha Municipal Code this 13th day of October, 1983.

Sam J. Deurmann  
City Engineer

APPROVAL OF CITY PLANNING BOARD

This plat of Omaha Industrial Foundation District No. 4, Replat I; was approved by the City Planning Board of the City of Omaha this 10th day of AUGUST, 1983.

Leon F. Bled  
Chairman

OMAHA CITY COUNCIL ACCEPTANCE

This plat of Omaha Industrial Foundation District No. 4, Replat I; was approved and accepted by the City Council of Omaha this 9th day of September, 1983, A.D.

Michael Boyle  
Bernie Senior  
City Council President

SURVEYOR'S CERTIFICATE

I, Ronald F. Kratochvil, a Registered Land Surveyor in the State of Nebraska, so hereby certify that I have accurately surveyed the outer boundaries of this plat of Omaha Industrial Foundation District No. 4, Replat I; and I shall install permanent iron pins at the corners of all lots, streets, angle points, and the terminal points of all curves upon completion of the grading and that a bond has been furnished to the City of Omaha, Nebraska in order to insure that placing of permanent iron pins, as shown on this plat of Omaha Industrial Foundation District No. 4, Replat I the limits and boundaries of said subdivision are as follows:

Lot 13, Omaha Industrial Foundation District No. 4, a subdivision in the west half of Section 36, Township 15 North, Range 11 east of the Sixth Principal Meridian in Douglas County, Nebraska, containing 44.514 acres more or less.

Dated this 11th day of July, 1983



Ronald F. Kratochvil  
Registered Land Surveyor  
L.S. No. 363

ACKNOWLEDGEMENT OF GRADING

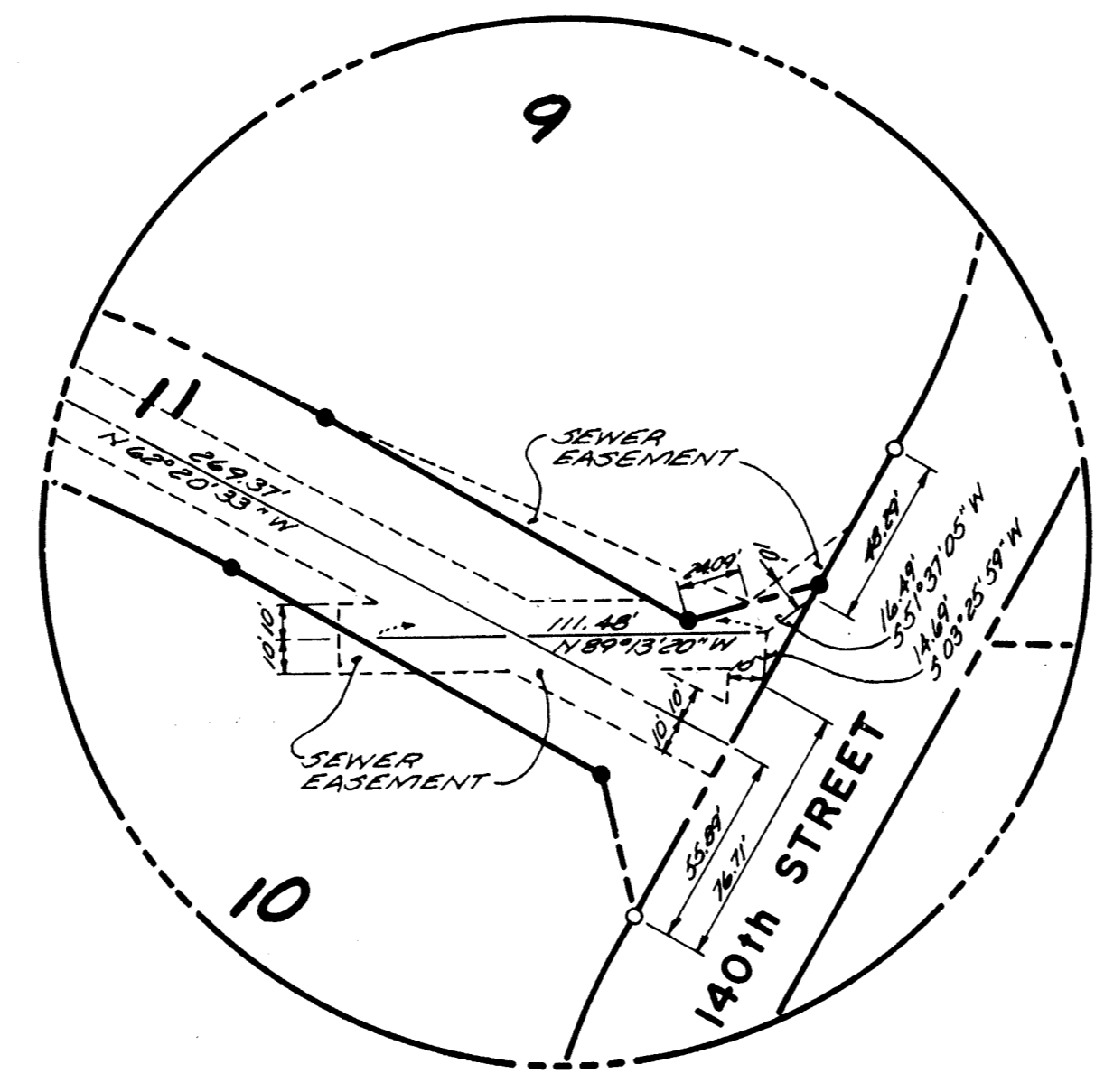
I hereby certify that a bond has been furnished the City of Omaha, Nebraska, in order to insure that the streets within this plat of Omaha Industrial Foundation District No. 4, Replat I; will be graded to the grades approved by the City Engineer and filed with the City of Omaha.

Dated this 11th day of July, 1983

Donald L. Peterson  
City Engineer



CURVE NO.	RADIUS	ARC LENGTH	CORD LENGTH	CORD BEARING
1	282.50'	76.42'	76.19'	S. 07° 21' 11" E.
2	282.50'	56.29'	56.20'	S. 20° 48' 43" E.
3	"P" & "A"	137.50'	16.42'	S. 33° 12' 04" E.
4	"P" & "A"	325.00'	167.58'	S. 19° 00' 28" E.
5	"P" & "A"	325.00'	165.86'	S. 14° 23' 02" N.
6	"P" & "A"	375.00'	189.93'	S. 14° 30' 07" W.
7	258.33'	175.30'	171.95'	N. 80° 26' 11" W.
8	308.33'	99.11'	98.68'	S. 70° 12' 16" E.
9	375.00'	254.31'	254.31'	S. 24° 34' 48" W.
10	375.00'	80.72'	80.72'	S. 50° 34' 45" E.
11	50.00'	50.00'	50.00'	S. 45° 35' 57" E.
12	425.00'	86.28'	86.13'	N. 38° 35' 06" E.
13	425.00'	91.66'	91.48'	N. 50° 34' 45" E.
14	188.69'	105.20'	103.84'	S. 17° 16' 23" W.
15	160.69'	89.59'	88.43'	N. 17° 16' 23" W.



SEWER EASEMENT DETAIL  
NO SCALE

48 Dead

RECEIVED  
1983 OCT 27 PM 2 33

Book 1717  
Page 32  
of 32

Fee 100  
Index  
Copied  
86th  
11-19  
15-1

ENGINEERING

ARCHITECTURE

PLANNING

LEO A DAILY