

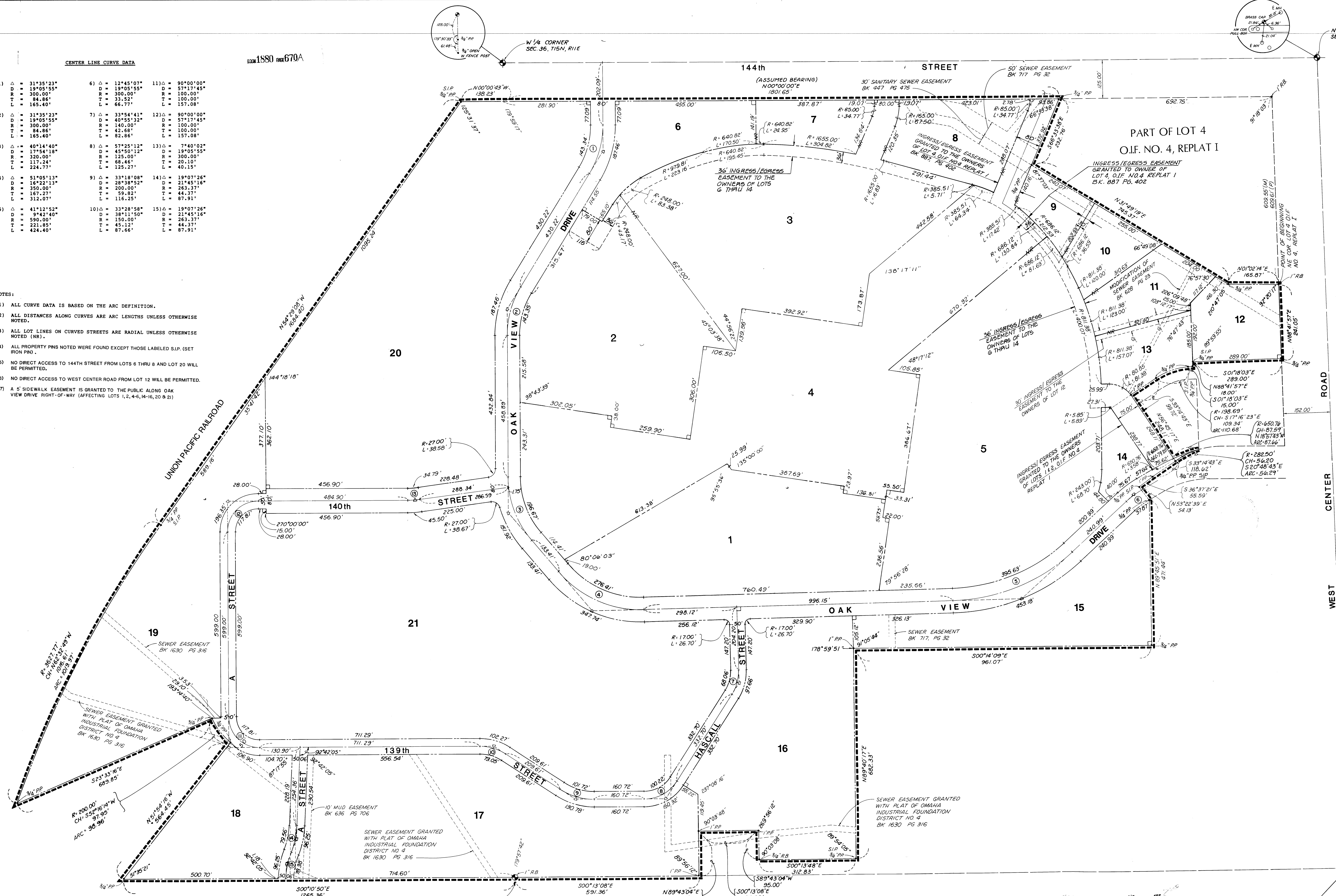
GS#46

CENTER LINE CURVE DATA

1) Δ = 31°35'23" D = 19°05'55" R = 300.00' T = 84.86' L = 165.40'	6) Δ = 12°45'07" D = 19°05'55" R = 300.00' T = 33.52' L = 66.77'	11) Δ = 90°00'00" D = 19°05'55" R = 100.00' T = 100.00' L = 157.08'
2) Δ = 31°35'23" D = 19°05'55" R = 300.00' T = 84.86' L = 165.40'	7) Δ = 33°54'41" D = 40°55'12" R = 140.00' T = 42.68' L = 82.86'	12) Δ = 90°00'00" D = 19°05'55" R = 100.00' T = 100.00' L = 157.08'
3) Δ = 40°14'40" D = 17°54'18" R = 320.00' T = 117.24' L = 224.77'	8) Δ = 57°25'12" D = 45°50'12" R = 125.00' T = 68.46' L = 125.27'	13) Δ = 7°40'02" D = 19°05'55" R = 300.00' T = 20.10' L = 40.15'
4) Δ = 51°05'13" D = 16°22'13" R = 350.00' T = 167.27' L = 312.07'	9) Δ = 33°18'08" D = 28°38'52" R = 200.00' T = 59.82' L = 116.25'	14) Δ = 19°07'26" D = 21°45'16" R = 263.37' T = 44.37' L = 87.91'
5) Δ = 41°12'52" D = 9°42'40" R = 590.00' T = 221.85' L = 424.40'	10) Δ = 33°28'58" D = 38°11'50" R = 150.00' T = 45.12' L = 87.66'	15) Δ = 19°07'26" D = 21°45'16" R = 263.37' T = 44.37' L = 87.91'

- NOTES:
- 1) ALL CURVE DATA IS BASED ON THE ARC DEFINITION.
 - 2) ALL DISTANCES ALONG CURVES ARE ARC LENGTHS UNLESS OTHERWISE NOTED.
 - 3) ALL LOT LINES ON CURVED STREETS ARE RADIAL UNLESS OTHERWISE NOTED (NR).
 - 4) ALL PROPERTY PINS NOTED WERE FOUND EXCEPT THOSE LABELED S.I.P. (SET IRON PIN).
 - 5) NO DIRECT ACCESS TO 144TH STREET FROM LOTS 6 THRU 8 AND LOT 20 WILL BE PERMITTED.
 - 6) NO DIRECT ACCESS TO WEST CENTER ROAD FROM LOT 12 WILL BE PERMITTED.
 - 7) A 5' SIDEWALK EASEMENT IS GRANTED TO THE PUBLIC ALONG OAK VIEW DRIVE RIGHT-OF-WAY (AFFECTING LOTS 1, 2, 4-6, 14-16, 20 & 21)

201880 1886670A



OAK VIEW

LOTS 1 THRU 21, INCLUSIVE
 A REPLAT OF: LOTS 1, 2, 4 THRU 12, AND PART OF LOT 3,
 OMAHA INDUSTRIAL FOUNDATION NO. 4,
 TOGETHER WITH LOTS 5 THRU 11, AND PART OF LOTS 3 & 4
 OMAHA INDUSTRIAL FOUNDATION NO. 4 REPLAT I,
 ALL LOCATED IN THE WEST 1/2 OF
 SECTION 36, TOWNSHIP 15 NORTH, RANGE 11 EAST
 DOUGLAS COUNTY, NEBRASKA
 1989

