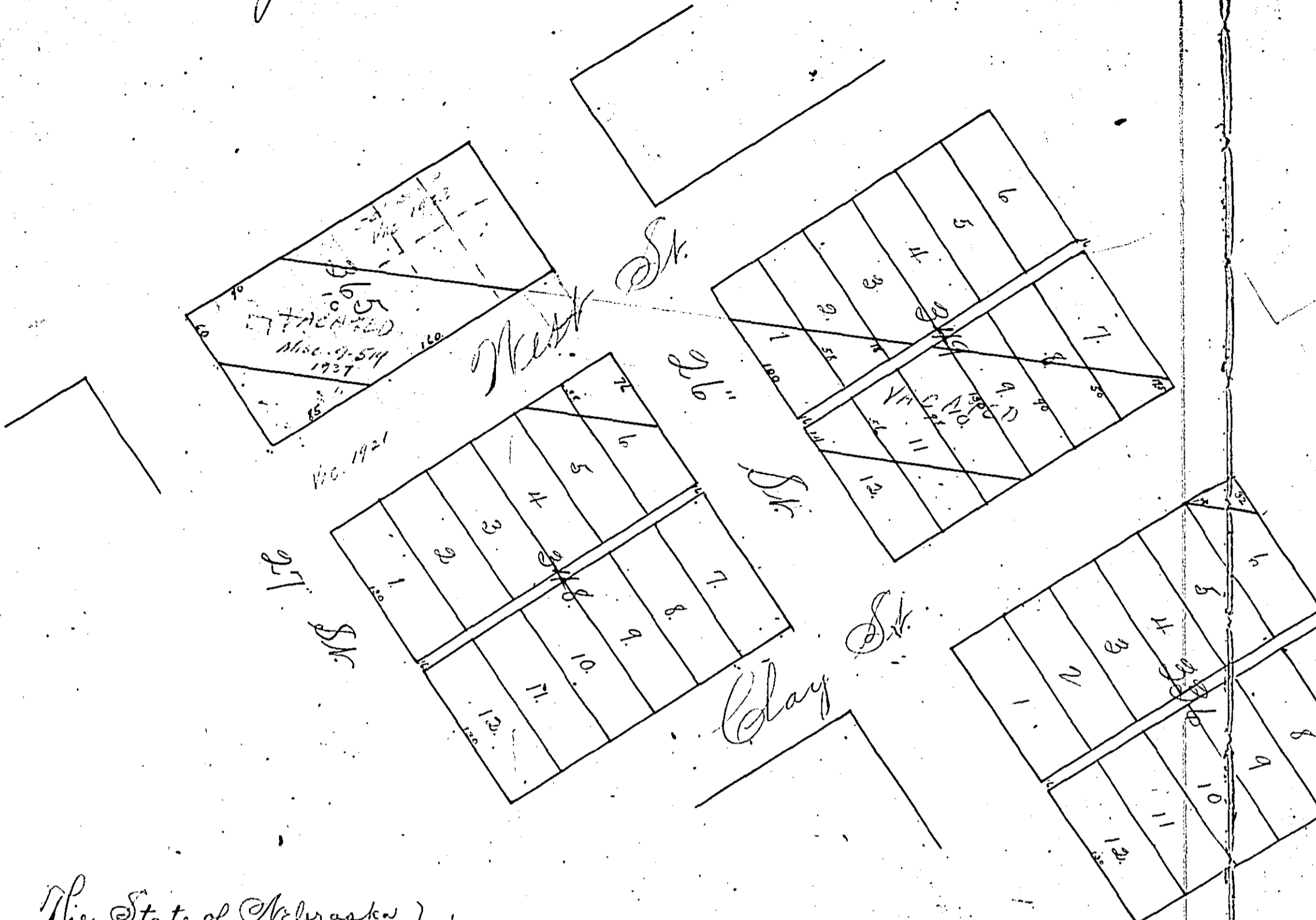


Fee 55°

# Belleve Boulevard

Filed July 17-1908. - Ernest L. Ireland, County Clerk.



The State of Nebraska }  
 County of Douglas } ss. Roy N. Fowl, being first, duly sworn,  
 deposes and says that this is a true and accurate copy  
 of Boulevard Avenue, at Belleve, Nebraska, as surveyed  
 and platted by him.

Roy N. Fowl.

Sworn to before me and subscribed in my presence this  
 14th day of July, A. D. 1908.

Notarial  
 Seal

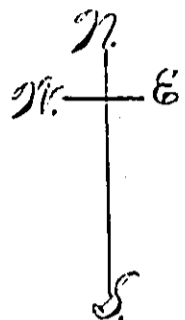
Dexter L. Thomas,  
 Notary Public.  
 Com. Exp. Sep. 17, 1912.

I hereby certify that this a true and correct copy  
 of Boulevard Avenue as established by ordinance No. 55,  
 on the 6th day of March, 1906.

(Belleve Village Seal)

Oscar Kayser,  
 Village Clerk

# Belleme Boulevard



46	6	136	7
50	5	120	8
46	4	97	9
38	3	70	10
3	2	17	11
46	1	136	12

136	6	130	7
5	5	18	8
4	4	7	9
3	3	10	10
2	2	14	11
15	1	12	12

14" St.

46	6	7
5	5	8
4	4	9
3	3	10
2	2	11
46	1	12

100	6	7
103.2	5	8
13.4	4	9
40	3	10
2	2	11
40	1	12

15" St.

46	6	7
5	5	8
4	4	9
3	3	10
2	2	11
46	1	12

84	6	7
5	5	8
4	4	9
3	3	10
2	2	11
84	1	12

16" St.

46	6	7
5	5	8
4	4	9
3	3	10
2	2	11
46	1	12

84	6	7
5	5	8
4	4	9
3	3	10
2	2	11
84	1	12

Washington St.