

FILED  
INSTRUMENT NUMBER  
~~92-01573~~  
92-01573  
92 JAN 28 AM 9:16

LAND SURVEYOR'S CERTIFICATE

92-01573

I hereby certify that this survey was made by me or under my direct personal supervision and that I am a duly Registered Land Surveyor under the laws of the State of Nebraska.

LEGAL DESCRIPTIONS

Unit 25A = Unit 25, Lite Industrial Limited Condo Park, a condominium as surveyed, platted and recorded in Sarpy County, Nebraska, except that part described as follows: Beginning at the SW corner of said Unit 25, thence North (assumed bearing) on the West line of said Unit 25 a distance of 426.99' to the NW corner of said Unit 25; thence S89°55'14"E on the North line of said Unit 25 a distance of 65.00'; thence S01°20'30"E a distance of 427.12' to the South line of said Unit 25 thence N89°55'14"W on the South line of said Unit 25 a distance of 75.00' to the point of beginning.

Unit 25B = That part of Unit 25, Lite Industrial Limited Condo, a condominium as surveyed, platted and recorded in Sarpy County, Nebraska described as follows: Beginning at the SW corner of said Unit 25; thence North (assumed bearing) on the West line of said Unit 25 a distance of 426.99' to the NW corner of said Unit 25; thence S89°55'14"E on the North line of said Unit 25 a distance of 65.00'; thence S01°20'30"E a distance of 427.12' to the South line of said Unit 25 thence N89°55'14"W on the South line of said Unit 25 a distance of 75.00' to the point of beginning.

Proof \_\_\_\_\_  
D.E. \_\_\_\_\_  
Verify \_\_\_\_\_  
Filmed \_\_\_\_\_  
Checked \_\_\_\_\_  
Fee \$ 6.50

*James Wanner*  
REGISTERED LAND SURVEYOR L.S. 308

DECEMBER 20, 1991  
DATE

REGISTERED LAND SURVEYOR L.S. 308

DEDICATION

Know all men by these presents: that we, Lite Industrial Storage Park, Ltd. and Bonn Fence Company, Inc., being the owners of the land as described in the above legal descriptions and embraced within this surveyor's certificate have caused said property to be divided as shown, and we do hereby approve of the disposition of our property as shown on this surveyor's certificate.

*Don G. Plankuck, Pres.*  
LITE INDUSTRIAL STORAGE PARK, LTD.

*Bob R. Bonn, Pres.*  
BONN FENCE COMPANY, INC.

ACKNOWLEDGEMENT OF NOTARY

STATE OF Ne. )  
                          ) SS  
COUNTY OF Douglas )

The foregoing dedication was acknowledged before me this 20<sup>th</sup> day of December, 1991 by Don G. Plankuck, of Lite Industrial Storage Park, Ltd., on behalf of said Lite Industrial Storage Park, Ltd.

GENERAL NOTARY-STATE OF NEBRASKA  
ELAINE HANSON  
My Comm. Exp. Oct. 18, 1993

*Elaine Hanson*  
NOTARY PUBLIC

ACKNOWLEDGEMENT OF NOTARY

STATE OF Ne. )  
                          ) SS  
COUNTY OF Douglas )

The foregoing dedication was acknowledged before me this 20<sup>th</sup> day of December, 1991 by Bob R. Bonn, of Bonn Fence Company, Inc., on behalf of said Bonn Fence Company, Inc.

GENERAL NOTARY-STATE OF NEBRASKA  
ELAINE HANSON  
My Comm. Exp. Oct. 18, 1993

*Elaine Hanson*  
NOTARY PUBLIC

APPROVAL OF SARPY COUNTY BOARD OF COMMISSIONERS

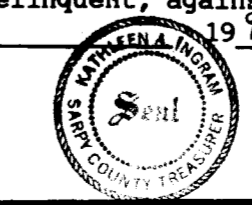
The lot split of the above-mentioned unit in Lite Industrial Limited Condo Park was approved by the Sarpy County Board of Commissioners this \_\_\_\_\_ day of \_\_\_\_\_, 1992.



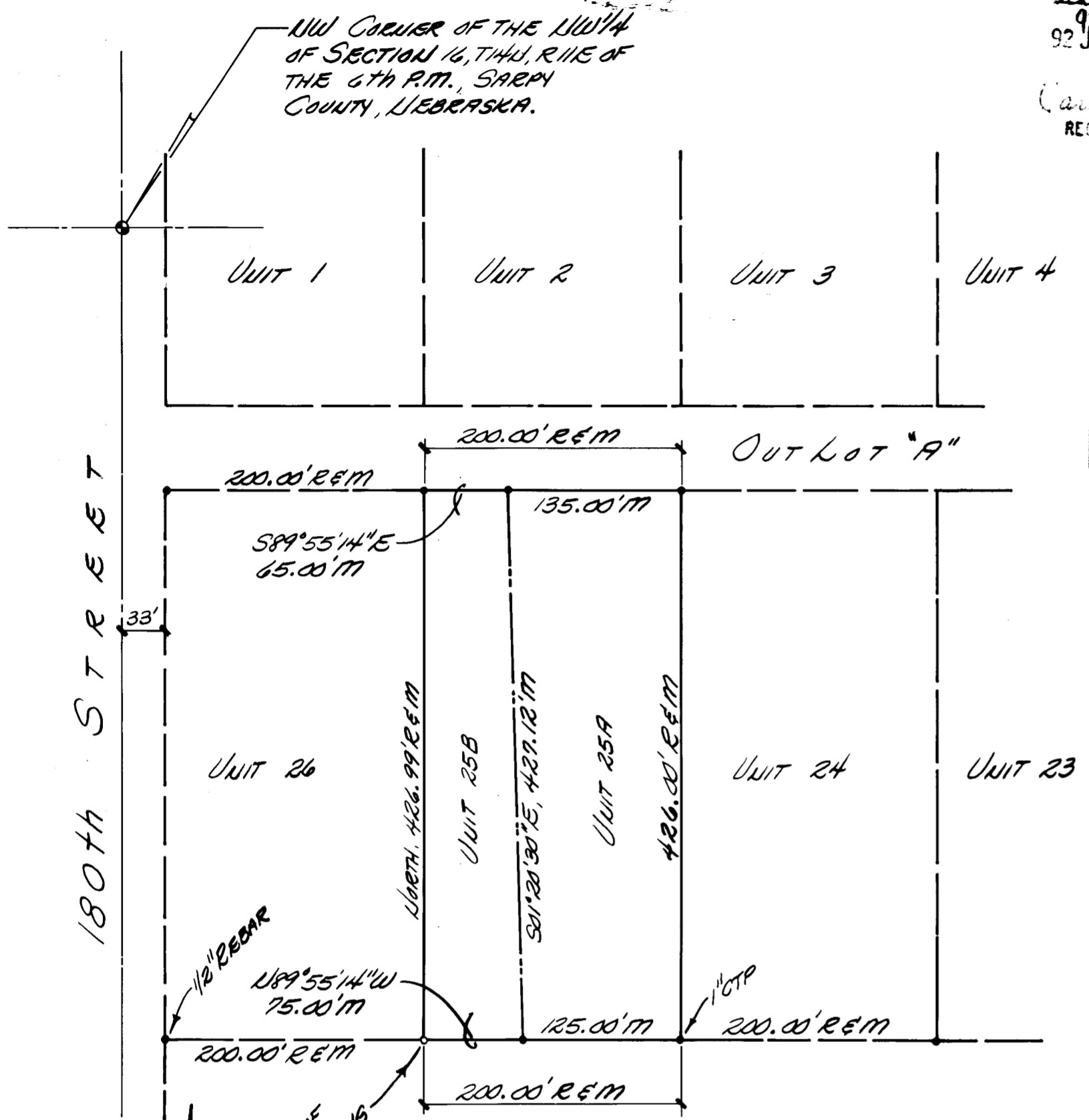
*Bob Woodman*  
CHAIRMAN

COUNTY TREASURERS CERTIFICATE

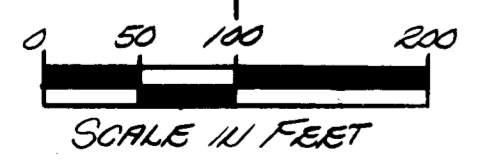
This is to certify that I find no regular or special taxes, due or delinquent, against the units described in the above legal descriptions, as shown by the records of this office, this 17<sup>th</sup> day of January, 1992.



*Kathleen A. Ingram*  
*By Doris Larsen, Deputy*  
SARPY COUNTY TREASURER Book 85-Chart 2, Pages 79



LEGEND  
CORNERS FOUND (3/4" CTP UNLESS NOTED) •  
RECORDED DISTANCE R  
MEASURED DISTANCE M  
CRIMPED TOP PIPE CTP



LITE INDUSTRIAL LIMITED CONDO PARK

UNITS 25A AND 25B

2 THOMPSON, DRESSEN & DORNER  
Consulting Engineers & Land Surveyors  
OMAHA, NEBRASKA 68154  
TELEPHONE: (402) 330-8860



DEC. 20, 1991

JOB NUMBER

200-184-170

01573  
01573