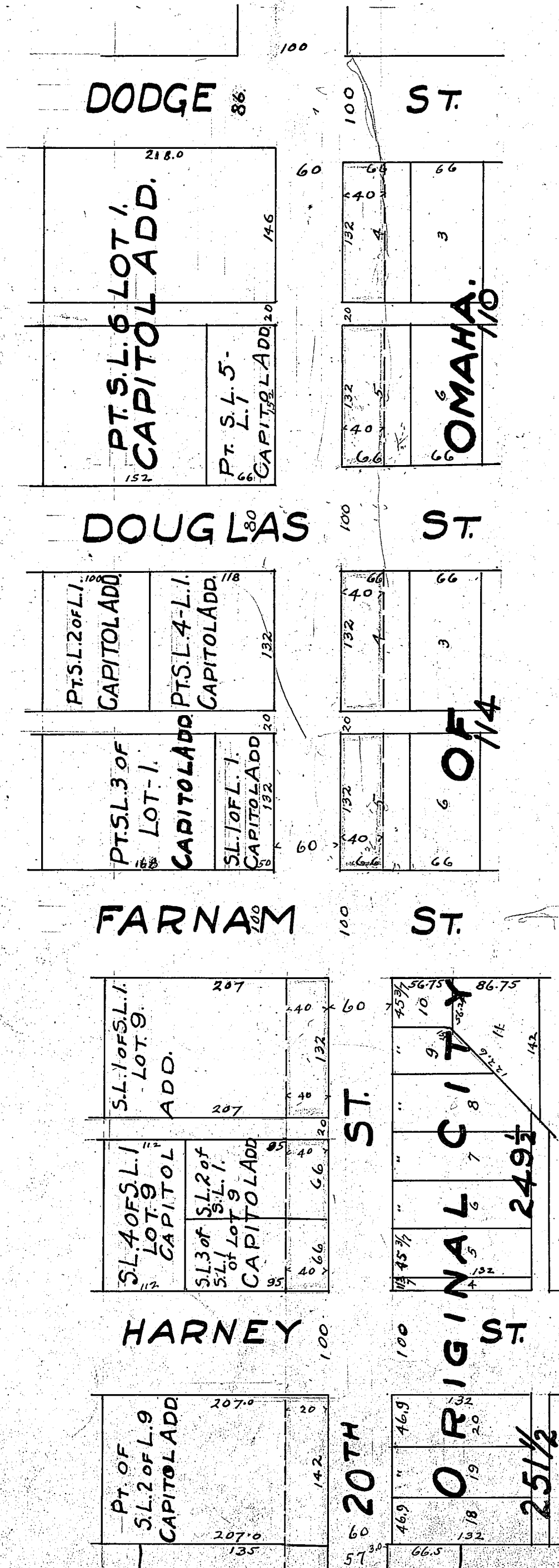


# MISCELLANEOUS RECORD, No. 83

242066-OMAHA PRINTING CO., OMAHA

## 9. WIDENING OF 20th St., FROM DODGE ST. TO LEAVENWORTH ST.



### DESCRIPTION OF PROPERTY ACQUIRED:

West 40 Feet of Lots 4 & 5, Blk 110;  
 The West 40 feet of Lots 4 & 5, Blk. 114, Original City.  
 East 40 feet of Sub Lots 1, 2 & 3 of Sub Lot 1; and the East 20 feet of Sub Lot 2, except Part taken for Harney St.; All in Lot 9, Capitol Addition.  
 The West 3 feet of Lots 40, 41, 42, 43, 44, 45, 46, 47, 50, 51, 52, The West 3 feet of that part of Lot 39, except that part taken for St. Mary's Ave., the West 3 feet of the South 32.38 feet of Lot 48, the West 3 feet of the North 49.12 feet of Lot 49; all in Replat of Blk 3, E. Kountze's Reserve.  
 East 20 feet of Lots 1, 2, 10, 11 & 12, and the East 20 feet of the North 38 feet of Lot 3, and the East 20 feet of Lot 13, Except Part taken for St. Mary's Avenue, Oak Knoll Addition.



# MISCELLANEOUS RECORD, No. 83

242066-OMAHA PRINTING CO., OMAHA

NECESSITY ORDINANCE NO. 12973 Mch. 30-1926  
FINAL ORDINANCE-NO.13445 Dec. 13-1927.

DEPARTMENT OF PUBLIC IMPROVEMENTS, OMAHA.  
OFFICE OF CITY ENGINEER.

WIDENING OF 20th ST. FROM DODGE ST. TO  
LEAVENWORTH ST.

Made by J.W.F. Scale 1"-  
Checked by Ed.S. 100' Jan. 5-1928  
Drawing No.109460

State of Nebraska, )  
Douglas County, ) ss.

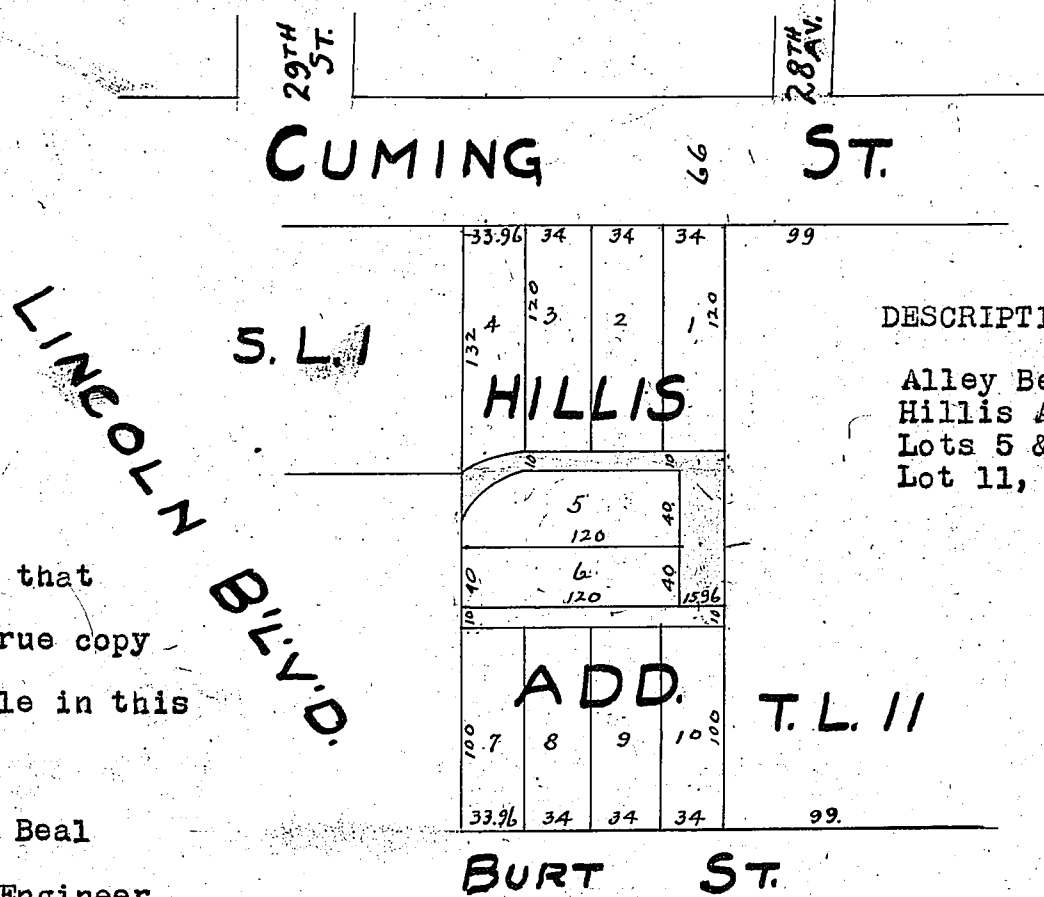
Entered in Numerical Index and filed for Record in  
the Register of Deeds' Office of said County, 11th  
day of January, A.D., 1928, at 2:40 o'clock P.M.

Harry Pearce,

Register of Deeds.

Compared by *M+W.*

6. VACATING ALLEYS BET. CUMING & BURT STS. 27th Ave. & Lincoln B'L'V'D.



DESCRIPTION OF PROPERTY:-

Alley Between Lots 1,2,3,4 & 5,  
Hillis Add. and Alley Between  
Lots 5 & 6, Hillis Add. & Tax  
Lot 11, of Section 16-15-13.

I hereby certify that  
this plat is a true copy  
of Records on file in this  
office.

Herman Beal  
City Engineer.

FINAL ORDINANCE No. 13460 Jan. 24, 1928.  
NECESSITY ORDINANCE No. 13426, Oct. 4-1927.

DEPARTMENT OF PUBLIC IMPROVEMENTS, OMAHA, NEBR.  
OFFICE OF CITY ENGINEER.

VACATING ALLEYS BET. CUMING & BURT STS.  
27th Ave. & LINCOLN B'L'V'D.

Made by J.W.F. Scale 1"-  
Checked by Ed.S. 100 ft. Nov. 5-1927.  
Drawing No. 144352

State of Nebraska, )  
Douglas County, ) ss.

Entered in Numerical Index and filed for Record in  
the Register of Deeds' Office of said County, the 31st  
day of January, A.D., 1928, at 4:05 o'clock P.M.

Harry Pearce,

Register of Deeds.

Compared by *M+W.*