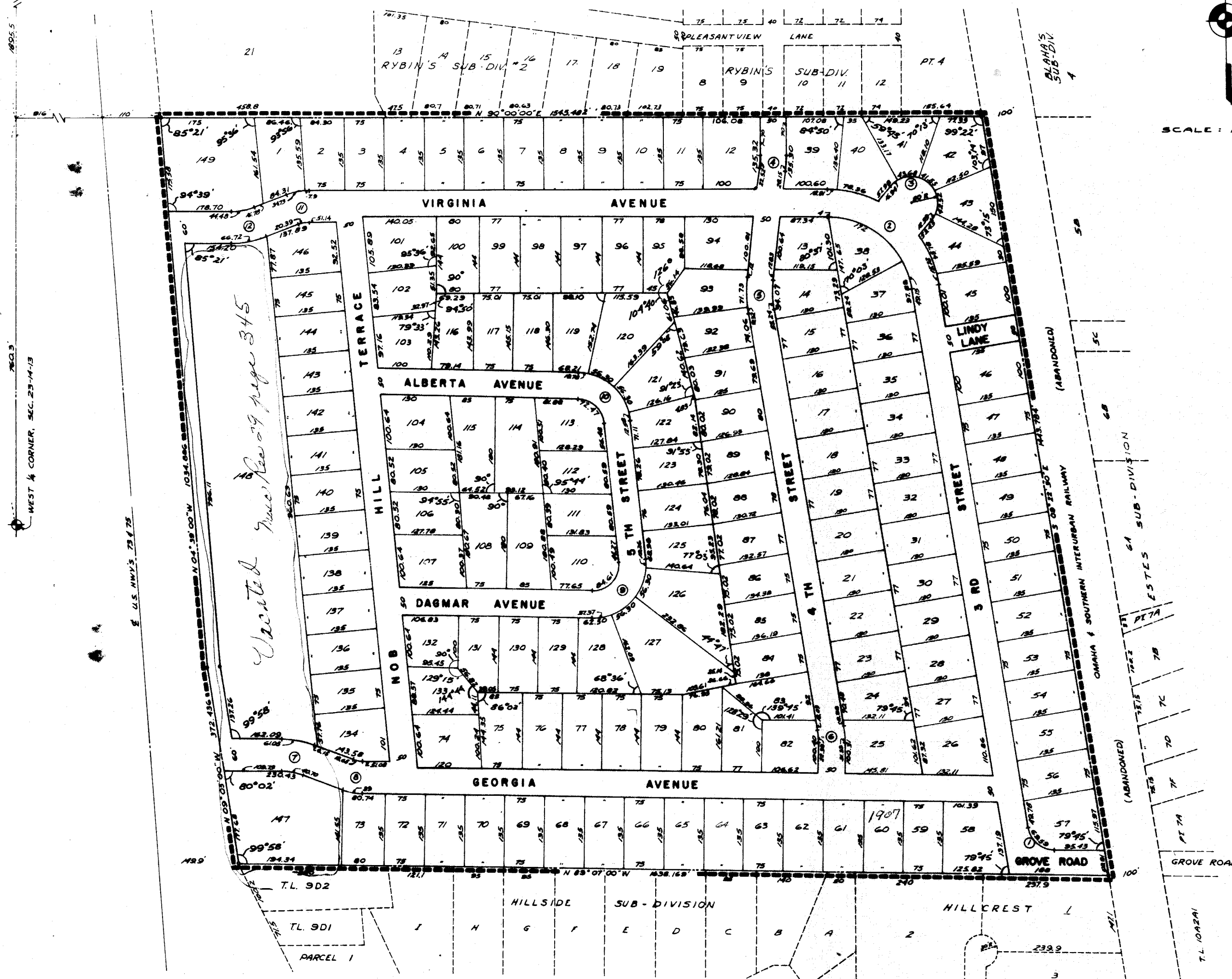


NOB HILL

A SUBDIVISION LOCATED IN THE WEST 1/2 OF SEC. 23, T-14-N,
R-13-E OF THE 6TH P.M., SARPY COUNTY, NEBRASKA
(LOTS 1 THRU 149)



SCALE: 1"=100'



CURVE DATA				
A	R	T	D	L
1. 78°44'30"	50.00	41.763	14.592	63.59
2. 60°37'30"	100.00	79.526	30.571	126.93
3. 100°00'00"	50.00	0.00	14.592	157.08
4. 4°27'06"	225.00	12.681	25.465	25.34
5. 18°49'30"	225.00	81.275	25.465	62.181
6. 10°15'31"	150.00	18.444	38.107	26.86
7. 19°25'24"	150.00	25.682	38.107	53.87
8. 19°25'24"	85.00	14.553	74.068	28.83
9. 36°37'36"	75.00	64.712	76.394	126.92
10. 83°02'24"	75.00	66.921	76.394	128.70
11. 21°14'17"	85.00	18.937	74.068	31.51
12. 21°14'17"	150.00	28.123	38.107	55.60

SURVEYOR'S CERTIFICATE

I HEREBY CERTIFY THAT I HAVE ACCURATELY SURVEYED AND STAKED WITH IRON PINS ALL CORNERS OF ALL LOTS, STREETS, AVENUES, ANGLE POINTS AND ENDS OF ALL CURVES IN NOB HILL SAID ADDITION IS LOCATED IN THE WEST HALF OF SECTION 23, TOWNSHIP 14 NORTH, RANGE 13 EAST OF THE 6TH P.M., SARPY COUNTY, NEBRASKA, MORE PARTICULARLY DESCRIBED AS FOLLOWS:

BEGINNING AT A POINT ON THE NORTH LINE OF LOT 10 ESTES SUBDIVISION AND THE EAST RIGHT-OF-WAY LINE OF HIGHWAY 79-75; THENCE EAST (ASSUMED BEARING) ALONG THE NORTH LINES OF LOTS 5 AND 10 ESTES SUBDIVISION A DISTANCE OF 1945.482 FEET; THENCE SOUTH 9° 22' 30" EAST ALONG THE WEST RIGHT-OF-WAY LINE OF THE OLD INTER-URBAN RAILROAD A DISTANCE OF 1940.784 FEET; THENCE NORTH 89° 07' WEST ALONG THE SOUTH LINE OF LOTS 7 AND 8 ESTES SUBDIVISION A DISTANCE OF 1638.169 FEET; THENCE NORTH 9° 05' WEST ALONG THE EAST RIGHT-OF-WAY LINE OF HIGHWAY 79-75 A DISTANCE OF 372.436 FEET; THENCE NORTH 4° 39' WEST ALONG THE EAST RIGHT-OF-WAY LINE OF HIGHWAY 79-75 A DISTANCE OF 1094.886 FEET TO THE POINT OF BEGINNING.

Collekony's Schrammer, Inc.
Date 7-13-61
Em. Sulekhan L.S. 134

APPROVAL OF COUNTY SURVEYOR

I HEREBY APPROVE OF THIS PLAT OF NOB HILL ON THIS 17 DAY OF July A.D., 1961
Frank W. Davis
COUNTY SURVEYOR

UTILITIES EASEMENT

AN EASEMENT IS HEREBY GRANTED TO OMAHA PUBLIC POWER DISTRICT AND NORTHWESTERN BELL TELEPHONE COMPANY TO INSTALL AND MAINTAIN ELECTRIC AND TELEPHONE UTILITIES ALONG, ACROSS, OVER AND UNDER THE REAR FIVE FEET (5') OF EACH LOT.

COUNTY TREASURER'S CERTIFICATE

EXCEPT SPECIAL ASSESSMENTS FOR SEWER ON LOTS 147
THIS IS TO CERTIFY THAT I FIND NO REGULAR OR SPECIAL TAXES DUE OR DELINQUENT AGAINST THE PROPERTY DESCRIBED
IN THE SURVEYOR'S CERTIFICATE AND EMBRACED IN THIS PLAT AS SHOWN BY THE RECORDS OF THIS OFFICE
DATE: 9-6-61
Frank W. Day
COUNTY TREASURER

APPROVAL OF THE COUNTY COMMISSIONERS OF SARPY COUNTY

THIS PLAT OF NOB HILL WAS APPROVED BY THE SARPY COUNTY BOARD OF COMMISSIONERS ON THIS 21 DAY OF August A.D., 1961
Frank W. Day
CHAIRMAN OF THE BOARD OF COMMISSIONERS

Frank W. Davis
COUNTY BUILDING INSPECTOR

APPROVAL OF SARPY COUNTY PLANNING COMMISSION

THIS PLAT OF NOB HILL WAS APPROVED BY THE SARPY COUNTY PLANNING COMMISSION ON THIS 18 DAY OF Aug, A.D., 1961
Frank W. Day
CHAIRMAN OF PLANNING COMMISSION

DEDICATION

KNOW ALL MEN BY THESE PRESENTS: THAT WE, BELTON R. LEGLER AND HILDA A. LEGLER, HUSBAND AND WIFE, MORTGAGEES, CORNHUSKER HOMES CO., OWNER, A NEBRASKA CORPORATION, DON DECKER, PRESIDENT, BEING SOLE OWNERS AND PROPRIETORS OF THE LAND DESCRIBED IN THE SURVEYOR'S CERTIFICATE AND EMBRACED WITHIN THIS PLAT HAVE CAUSED THE SAME TO BE SUBDIVIDED INTO LOTS AND STREETS, SAID SUBDIVISION TO BE KNOWN AS NOB HILL, THE LOTS NUMBERED AS SHOWN, AND WE HEREBY RATIFY AND APPROVE OF THE DISPOSITION OF OUR PROPERTY AS SHOWN ON THIS PLAT, AND WE HEREBY DEDICATE TO THE PUBLIC FOR PUBLIC USE, THE STREETS SHOWN HEREIN. THE ABOVE ON FOREGOING SUBDIVISION IN THE WEST HALF OF SECTION 23, TOWNSHIP 14 NORTH, RANGE 13 EAST AS APPEARS ON THE PLAT IS MADE WITH FREE CONSENT AND IN ACCORDANCE WITH THE DESIRE OF THE UNDERSIGNED OWNERS AND PROPRIETORS.

IN WITNESS WHEREOF, WE DO HEREBY SET OUR HANDS THIS 17th DAY OF Aug, A.D., 1961.

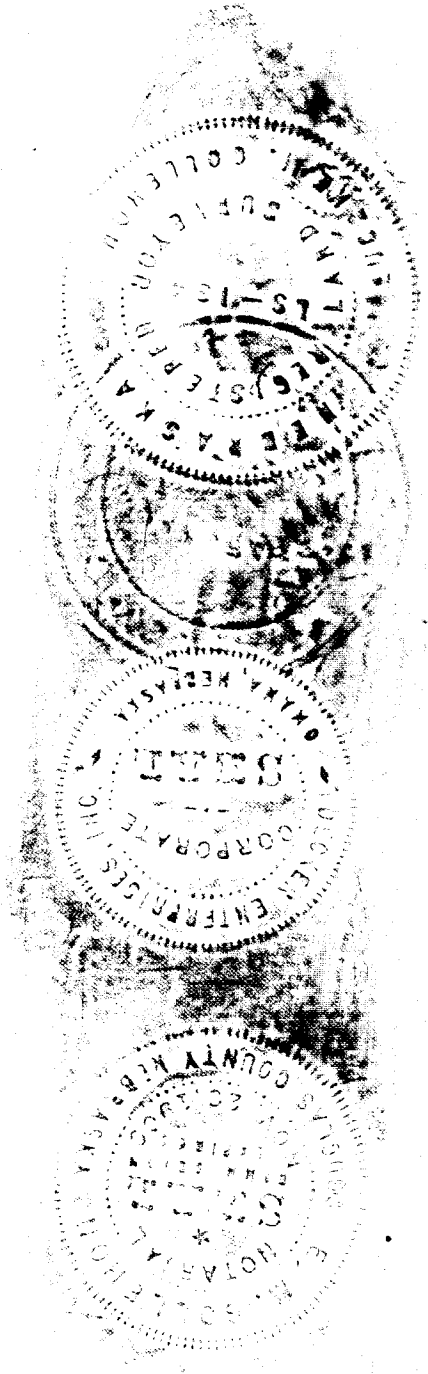
Belton R. Legler
BELTON R. LEGLER
Hilda A. Legler
HILDA A. LEGLER
Don Decker
DON DECKER, PRESIDENT
John W. Decker
SECRETARY

ACKNOWLEDGMENT OF NOTARY

STATE OF NEBRASKA) ss.
COUNTY OF DOUGLASS)
ON THIS 17th DAY OF Aug, A.D., 1961, BEFORE ME A NOTARY PUBLIC, DULY COMMISSIONED AND QUALIFIED IN AND FOR SAID COUNTY PERSONALLY CAME BELTON R. LEGLER AND HILDA A. LEGLER, HUSBAND AND WIFE, MORTGAGEES, WHO ARE PERSONALLY KNOWN TO ME TO BE THE IDENTICAL PERSONS WHOSE NAMES ARE AFFIXED TO THE DEDICATION OF THIS PLAT AND THEY ACKNOWLEDGED THE EXECUTION THEREOF TO BE THEIR VOLUNTARY ACT AND DEED; AND FURTHER CAME DON DECKER, PRESIDENT OF CORNHUSKER HOMES CO., A CORPORATION WHO IS PERSONALLY KNOWN TO BE THE IDENTICAL PERSON WHOSE NAME IS AFFIXED TO THE DEDICATION OF THIS PLAT AND HE ACKNOWLEDGED THE EXECUTION THEREOF TO BE HIS VOLUNTARY ACT AND DEED AS SUCH OFFICER AND THE VOLUNTARY ACT AND DEED OF SAID CORPORATION AND THE SEAL OF SAID CORPORATION WAS THEREBY AFFIXED BY ITS AUTHORITY.

WITNESS MY HAND AND NOTARIAL SEAL AT OMAHA, NEBRASKA, IN SAID COUNTY, THE DATE LAST ABOVE SAID.
Em. Sulekhan
NOTARY PUBLIC

MY COMMISSION EXPIRES ON THE 21st DAY OF Nov, 1965.



STATE OF NEBRASKA
SARPY COUNTY, NEB.
Filed for record
Sept. 6, 1961
A.D. 1961 at 4:00 P.M.
Notary Public
E. Sulekhan
By *E. Sulekhan*
4.00