

2005-39290

LAKEVIEW SOUTH II REPLAT 4

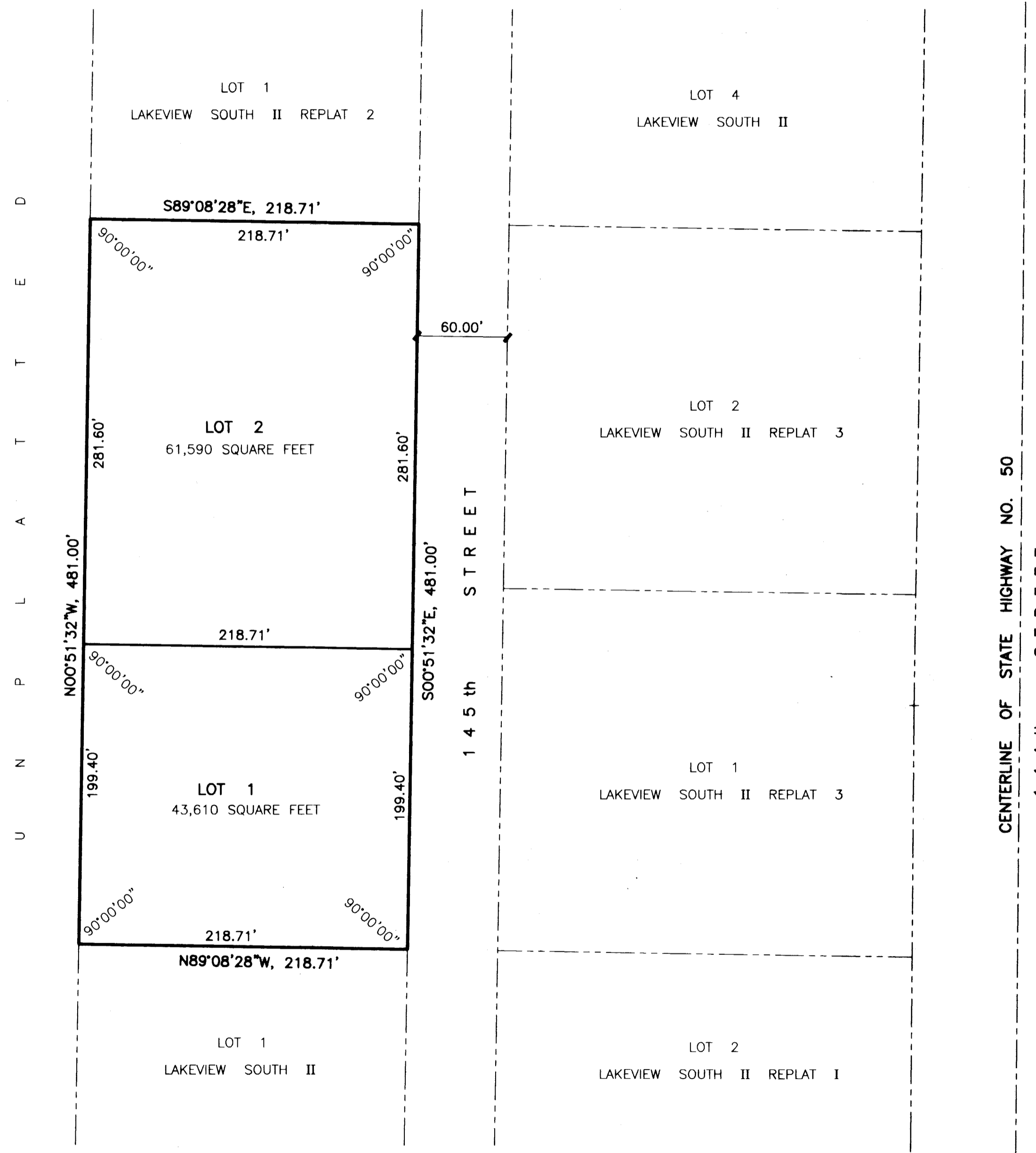
LOTS 1 and 2,

BEING A REPLATTING LOT 2, LAKEVIEW SOUTH II, A SUBDIVISION IN SARPY COUNTY, NEBRASKA

ACCEPTANCE BY SARPY COUNTY REGISTER OF DEEDS
 COUNTER PLS C.E. PLM FILED FOR RECORD 10-24-05 AT 1:40P
 VERIFY PLS D.E. PLM INSTRUMENT # 2005 - 39290
 PROOF P
 FEES \$ 16.50
 CHECK # 150093
 CHARGE _____ CASH _____
 REFUND _____ CREDIT _____
 SHORT _____ NCR _____

Lloyd J. Dowling
 LLOYD J. DOWLING
 REGISTER OF DEEDS SARPY COUNTY, NE

SCALE: 1" = 60'
DATE: OCT. 4, 2005
DRAWN BY: RJR
CHECKED BY: JDW
REVISION



SURVEYOR'S CERTIFICATE

I HEREBY CERTIFY THAT I HAVE MADE A BOUNDARY SURVEY OF THE SUBDIVISION DESCRIBED HEREON AND THAT PERMANENT MARKERS HAVE BEEN FOUND OR SET AT ALL CORNERS OF SAID BOUNDARY AND AT ALL LOT CORNERS WITHIN SAID SUBDIVISION TO BE KNOWN AS LAKEVIEW SOUTH II REPLAT 4, LOTS 1 AND 2, BEING A REPLATTING OF LOT 2, LAKEVIEW SOUTH II, A SUBDIVISION IN SARPY COUNTY, NEBRASKA.

OCTOBER 4, 2005
 DATE:

DEDICATION

KNOW ALL MEN BY THESE PRESENTS: THAT WE, SWN INVESTMENTS, LLC., A NEBRASKA LIMITED LIABILITY COMPANY, BEING THE OWNERS, OF THE LAND DESCRIBED WITHIN THE SURVEYOR'S CERTIFICATE AND EMBRACED WITHIN THIS PLAT, HAVE CAUSED SAID LAND TO BE SUBDIVIDED INTO A LOT TO BE NUMBERED AS SHOWN, SAID SUBDIVISION TO BE HEREAFTER KNOWN AS LAKEVIEW SOUTH II REPLAT 4, AND WE DO HEREBY RATIFY AND APPROVE OF THE DISPOSITION OF OUR PROPERTY AS SHOWN ON THIS PLAT AND WE HEREBY GRANT A PERPETUAL EASEMENT TO THE OMAHA PUBLIC POWER DISTRICT, QWEST CORPORATION, AND ANY COMPANY WHICH HAS BEEN GRANTED A FRANCHISE TO PROVIDE A CABLE TELEVISION SYSTEM IN THE AREA TO BE SUBDIVIDED, THEIR SUCCESSORS AND ASSIGNS, TO ERECT, OPERATE, MAINTAIN, REPAIR, AND RENEW POLES, WIRES, CROSSARMS, DOWN GUYS AND ANCHORS, CABLES, CONDUITS AND OTHER RELATED FACILITIES AND TO EXTEND THEREON WIRES OR CABLES FOR THE CARRYING AND TRANSMISSION OF ELECTRIC CURRENT FOR LIGHT, HEAT, AND POWER FOR THE TRANSMISSION OF SIGNALS AND SOUNDS OF ALL KINDS AND THE RECEPTION THEREOF, INCLUDING SIGNALS PROVIDED BY A CABLE TELEVISION SYSTEM AND THEIR RECEPTION, ON, OVER, THROUGH, UNDER AND ACROSS A FIVE (5') FOOT WIDE STRIP OF LAND ABUTTING THE FRONT AND SIDE LOT LINES; AND AN EIGHT (8) FOOT WIDE STRIP OF LAND ABUTTING THE REAR BOUNDARY LINE. NO PERMANENT BUILDINGS, TREES, RETAINING WALLS OR LOOSE ROCK WALLS SHALL BE PLACED IN SAID EASEMENT WAYS, BUT THE SAME MAY BE USED FOR GARDENS, SHRUBS, LANDSCAPING, SIDEWALKS, DRIVEWAYS, AND OTHER PURPOSES THAT DO NOT THEN OR LATER INTERFERE WITH THE AFORESAID USES OR RIGHTS HEREIN GRANTED.

SWN INVESTMENTS, LLC.,
 A NEBRASKA LIMITED LIABILITY COMPANY
 BY: *Lee H. Sapp*
 LEE H. SAPP, GENERAL PARTNER

James D. Warner
 NEBRASKA REGISTERED LAND SURVEYOR
 JAMES D. WARNER
 NEBRASKA RLS 308

ACKNOWLEDGMENT OF NOTARY

STATE OF NEBRASKA)
 COUNTY OF SARPY) ss

THE FOREGOING DEDICATION WAS ACKNOWLEDGED BEFORE ME THIS 13th DAY OF October, 2005 BY LEE H. SAPP, GENERAL PARTNER OF SWN INVESTMENTS, LLC., A NEBRASKA LIMITED LIABILITY COMPANY ON BEHALF OF SAID COMPANY.

GENERAL NOTARY STATE OF NEBRASKA
 STEVEN G. REEDER
 My Comm. Exp. 3-17-06

Steven Reeder
 NOTARY PUBLIC

SARPY COUNTY TREASURER'S CERTIFICATE

THIS IS TO CERTIFY THAT I FIND NO REGULAR OR SPECIAL TAXES DUE OR DELINQUENT AGAINST THE PROPERTY DESCRIBED IN THE SURVEYOR'S CERTIFICATE AND EMBRACED ON THIS PLAT AS OF THIS 17 DAY OF OCT, 2005.

TAXES ASSESSED AND LEVIED FOR THE CURRENT YEAR ARE NEITHER DUE NOR PAID. TREASURERS CERTIFICATION IS ONLY VALID UNTIL DECEMBER 30th

Debra DeWitt
 SARPY COUNTY TREASURER

APPROVAL OF SARPY COUNTY BUILDING INSPECTOR

THIS PLAT OF LAKEVIEW SOUTH II REPLAT 4 WAS APPROVED BY THE SARPY COUNTY BUILDING INSPECTOR THIS 17 DAY OF OCT, 2005.

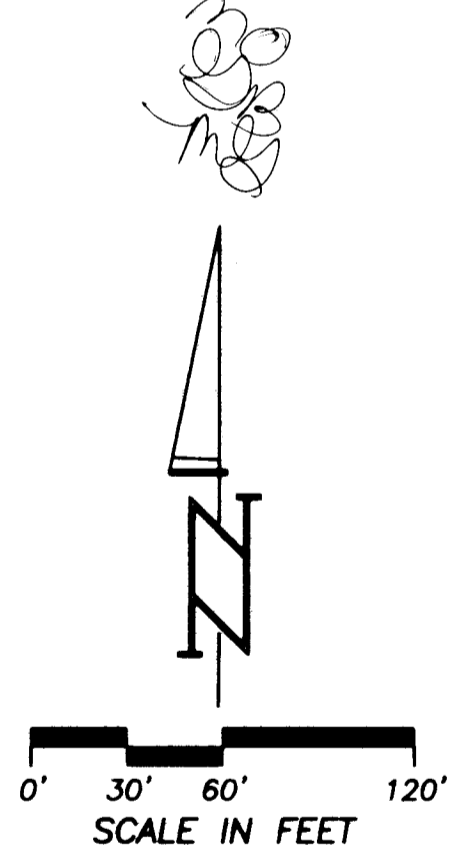
Ken Lee
 SARPY COUNTY BUILDING INSPECTOR

APPROVAL OF THE SARPY COUNTY SURVEYOR

THIS PLAT OF LAKEVIEW SOUTH II REPLAT 4 WAS APPROVED BY THE SARPY COUNTY SURVEYOR'S OFFICE THIS 13th DAY OF October, 2005.

THOMAS A. LYNAM
 SURVEYOR
 SARPY COUNTY, NEBRASKA

Thomas A. Lynam
 SARPY COUNTY SURVEYOR



LAKEVIEW SOUTH II REPLAT 4
 ADMINISTRATIVE REPLAT

THOMPSON, DRESSEN & DORNER, INC.
 Consulting Engineers & Land Surveyors
 10836 OLD MILL ROAD OMAHA, NEBRASKA 68154
 TEL: (402)330-8860 FAX: (402)330-8866
 EMAIL: TD2MAL@TD2CO.COM WEB: WWW.TD2CO.COM



549-176-7

A5491767A.DWG

2005-39290