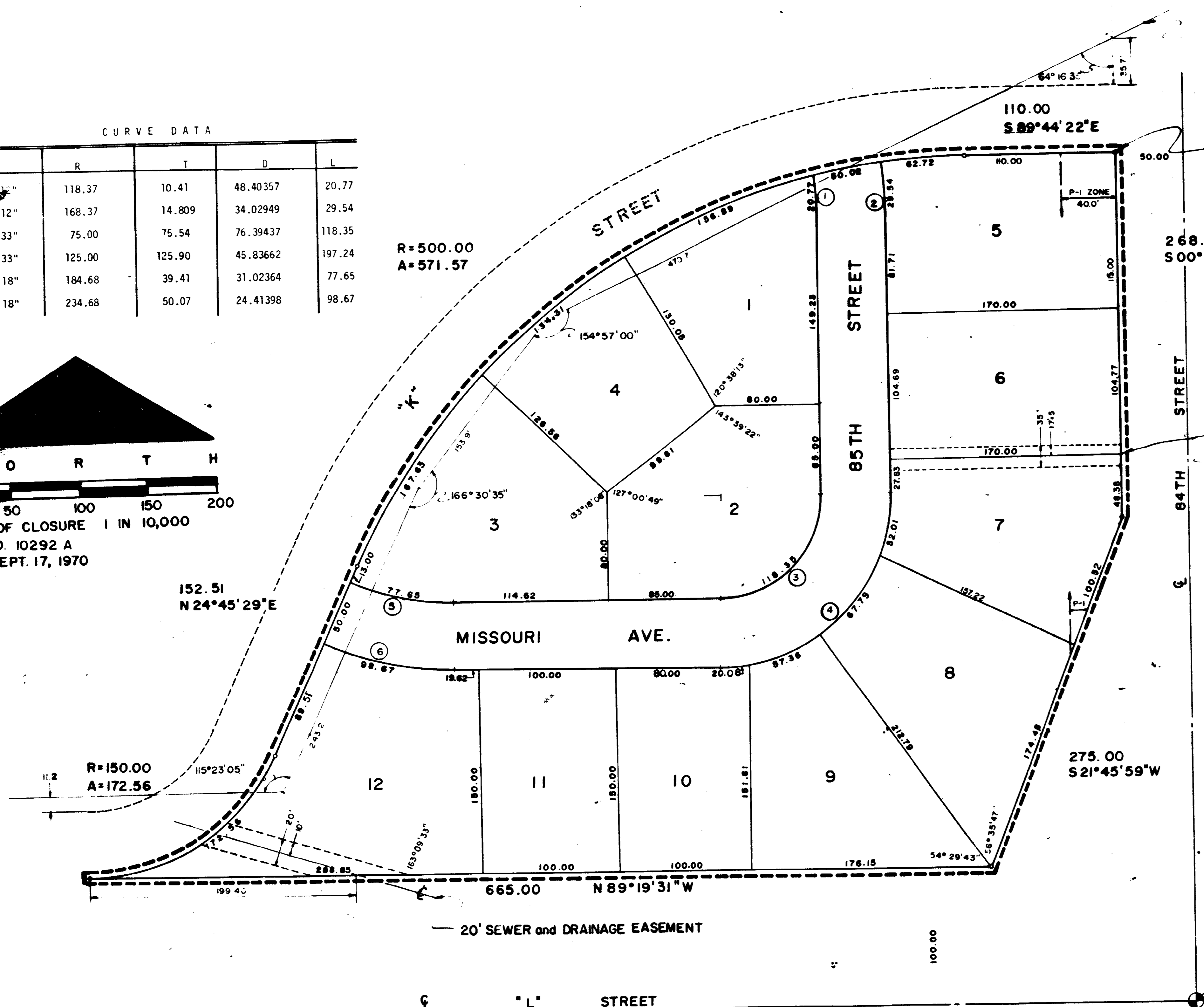
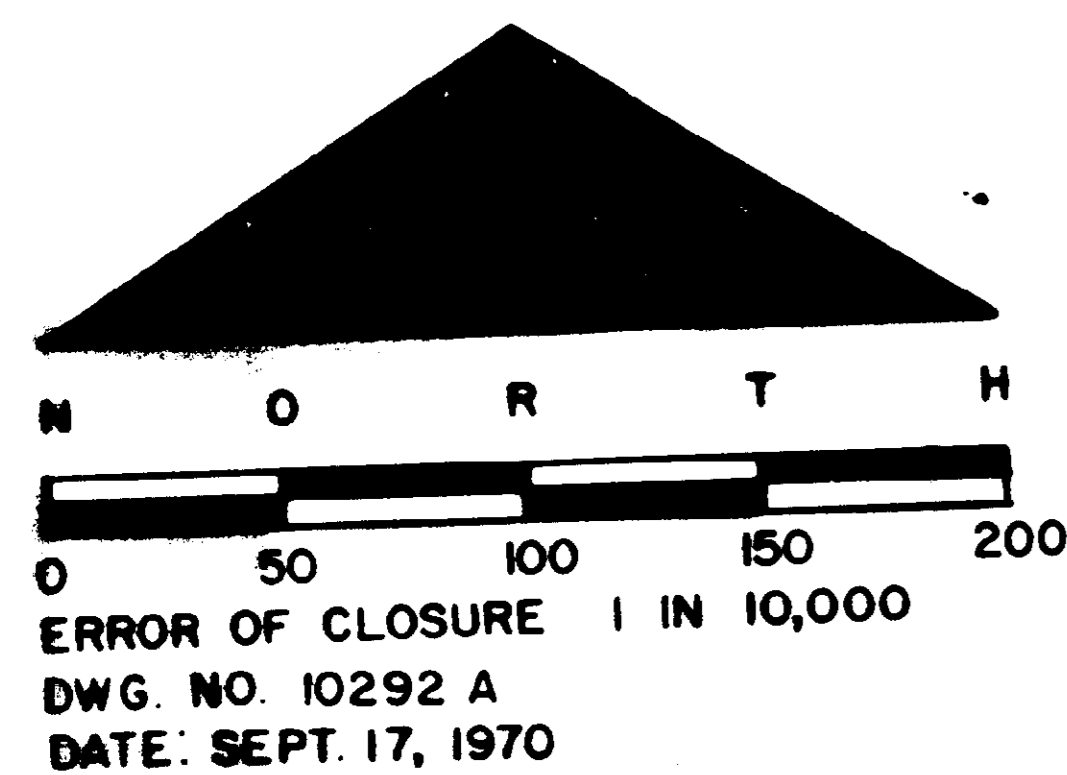


# SOUTHWEST INDUSTRIAL PARK

A REPLAT OF LOTS 6 & 7 BLOCK 5 CORNHUSKER INDUSTRIAL PARK A PLATTED AND RECORDED SUBDIVISION IN DOUGLAS COUNTY, NEBRASKA

CURVE DATA					
NO.		R	T	D	L
1	10° 31' 30"	118.37	10.41	48.40357	20.77
2	10° 3' 12"	168.37	14.809	34.02949	29.54
3	90° 24' 33"	75.00	75.54	76.39437	118.35
4	90° 24' 33"	125.00	125.90	45.83662	197.24
5	24° 5' 18"	184.68	39.41	31.02364	77.65
6	24° 5' 18"	234.68	50.07	24.41398	98.67



AT & T UNDERGROUND TRANSCONTINENTAL CABLE

POINT OF BEGINNING N.E. CORNER OF LOT 6 BLOCK 5 CORNHUSKER INDUSTRIAL PARK

268.15  
S 00° 15' 38" W

35' PRIVATE DRIVEWAY EASEMENT

S.W. COR., N.W. 1/4  
SEC. 2-14-12

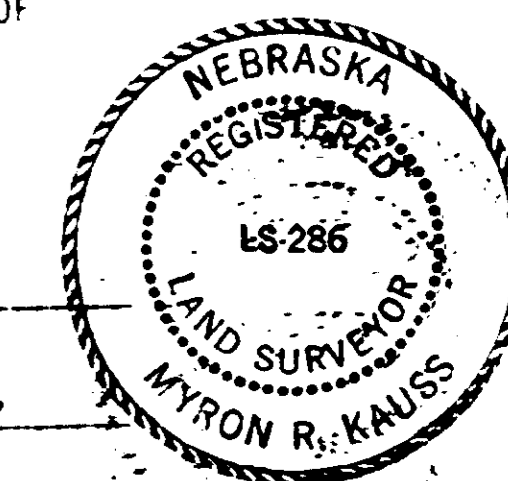
SURVEYOR'S CERTIFICATE

I HEREBY CERTIFY THAT I HAVE SURVEYED AND STAKED WITH IRON PIPE ALL CORNERS OF ALL LOTS, STREETS, AVENUES, AND ANGLE POINTS IN SOUTHWEST INDUSTRIAL PARK, A REPLAT OF LOTS 6 AND 7, BLOCK 5, CORNHUSKER INDUSTRIAL PARK, A PLATTED AND RECORDED SUBDIVISION IN DOUGLAS COUNTY, NEBRASKA MORE PARTICULARLY DESCRIBED AS FOLLOWS:

BEGINNING AT THE NORTHEAST CORNER OF LOT 6, BLOCK 5, IN CORNHUSKER INDUSTRIAL PARK THENCE SOUTH 00° 15' 38" WEST ALONG THE WESTERLY RIGHT OF WAY LINE OF 84TH STREET A DISTANCE OF 268.15 FEET; THENCE SOUTH 21° 45' 59" WEST ALONG SAID RIGHT OF WAY A DISTANCE OF 275.00 FEET TO A POINT ON THE NORTH RIGHT OF WAY LINE OF "L" STREET THENCE NORTH 89° 19' 31" WEST A DISTANCE OF 665.00 FEET; THENCE NORTHEASTERLY ALONG A 150.00 FOOT RADIUS CURVE TO THE LEFT (WHOSE CHORD BEARING IS NORTH 57° 42' 50" EAST AND WHOSE CHORD DISTANCE IS 163.20 FEET) AN ARC LENGTH OF 172.56 FEET TO A POINT OF TANGENCY SAID POINT BEING ON THE SOUTHEASTERLY RIGHT OF WAY LINE OF "K" STREET; THENCE NORTH 24° 45' 29" EAST A DISTANCE OF 152.51 FEET TO A POINT OF CURVATURE; THENCE NORTHEASTERLY ALONG A 500.00 FOOT RADIUS CURVE TO THE RIGHT A DISTANCE OF 571.57 FEET TO A POINT OF TANGENCY; THENCE SOUTH 89° 44' 22" EAST A DISTANCE OF 110.00 FEET TO THE POINT OF BEGINNING.

DATE: October 2, 1970

*Myron R. Kauss*  
LAND SURVEYOR



DEDICATION:

KNOW ALL MEN BY THESE PRESENTS THAT A. J. WHALEN (TRUSTEE) BEING THE SOLE OWNER AND PROPRIETOR OF THE LAND DESCRIBED IN THE SURVEYOR'S CERTIFICATE AND EMBRACED WITHIN THIS PLAT HAVE CAUSED THE SAME TO BE SUBDIVIDED INTO LOTS AND A STREET. SAID SUBDIVISION TO BE KNOWN AS SOUTHWEST INDUSTRIAL PARK THE LOTS NUMBERED AS SHOWN AND I HEREBY RATIFY AND APPROVE OF THE DISPOSITION OF THIS PROPERTY AS SHOWN ON THIS PLAT AND I HEREBY DEDICATE TO THE PUBLIC FOR PUBLIC USE THE STREET AND DRAINAGE AND STORM SEWER EASEMENTS SHOWN HEREIN.

THE ABOVE OR FOREGOING DESCRIBED SUBDIVISION BEING A REPLAT OF LOTS 6 AND 7, BLOCK 5, CORNHUSKER INDUSTRIAL PARK, A PLATTED AND RECORDED SUBDIVISION IN DOUGLAS COUNTY, NEBRASKA, AS APPEARS ON THIS PLAT IS MADE WITH FREE CONSENT AND IN ACCORDANCE WITH THE DESIRE OF THE UNDERSIGNED OWNER AND PROPRIETOR.

IN WITNESS WHEREOF, WE DO HERETO SET OUR HAND THIS 29 DAY OF September, 1970

*A. J. Whalen, Trustee*  
A. J. WHALEN, TRUSTEE

ACKNOWLEDGEMENT OF NOTARY:

STATE OF NEBRASKA )  
COUNTY OF DOUGLAS ) ss.  
ON THIS 29 DAY OF September, A.D., 1970, BEFORE ME A NOTARY PUBLIC DULY COMMISSIONED AND QUALIFIED IN AND FOR SAID COUNTY AND STATE PERSONALLY CAME A. J. WHALEN, TRUSTEE, WHO IS PERSONALLY KNOWN TO ME TO BE THE IDENTICAL PERSON WHO EXECUTED THE FOREGOING DEDICATION AS TRUSTEE, AND HE ACKNOWLEDGED THAT HE EXECUTED SAID DEDICATION AS HIS VOLUNTARY ACT AND DEED.  
WITNESS MY HAND AND NOTORIAL SEAL AT Omaha, NEBRASKA IN SAID COUNTY, THE DATE LAST AFORESAID.

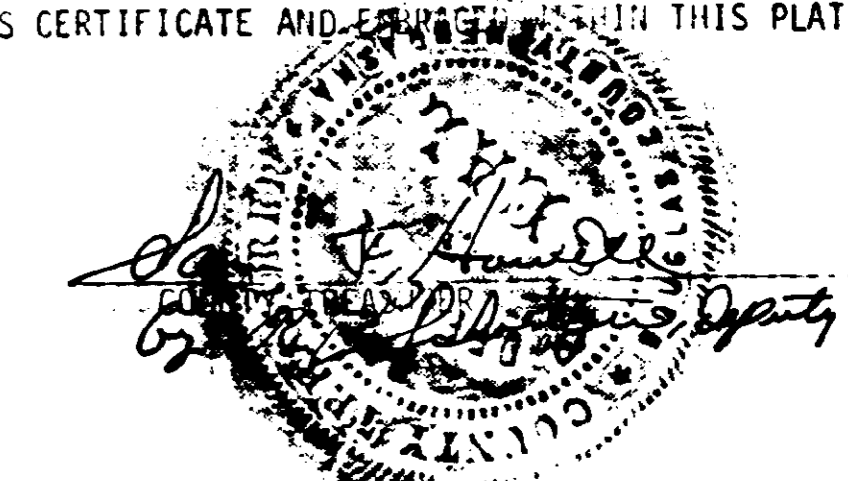
*Robert Anderson*  
NOTARY PUBLIC

MY COMMISSION EXPIRES ON THE 18 DAY OF November, 1971.

COUNTY TREASURER'S CERTIFICATE:

THIS IS TO CERTIFY THAT I FIND NO REGULAR OR SPECIAL TAXES DUE OR DELINQUENT AGAINST THE PROPERTY DESCRIBED IN THE SURVEYOR'S CERTIFICATE AND EMBRACED WITHIN THIS PLAT AS SHOWN BY THE RECORDS OF THIS OFFICE.

DATE: Sept 29, 1970



APPROVAL OF OMAHA CITY COUNCIL

THIS PLAT OF SOUTHWEST INDUSTRIAL PARK, LOTS 1 THROUGH 12, BOTH INCLUSIVE WAS APPROVED BY THE OMAHA CITY COUNCIL ON THIS 30 DAY OF October, A.D., 1970.

*Mayor*  
MAYOR  
*President*  
PRESIDENT  
ATTEST: *City Clerk*  
CITY CLERK

APPROVAL OF OMAHA CITY PLANNING BOARD

THIS PLAT OF SOUTHWEST INDUSTRIAL PARK, LOTS 1 THROUGH 12, BOTH INCLUSIVE WAS APPROVED BY THE OMAHA CITY PLANNING BOARD ON THIS 14TH DAY OF OCTOBER, A.D., 1970.

*Chairman*  
CHAIRMAN, OMAHA CITY PLANNING BOARD

APPROVAL OF CITY ENGINEER OF OMAHA

I HEREBY APPROVE OF THIS PLAT OF SOUTHWEST INDUSTRIAL PARK, LOTS 1 THROUGH 12, BOTH INCLUSIVE, ON THIS 15 DAY OF October, A.D., 1970.

*City Engineer*  
CITY ENGINEER

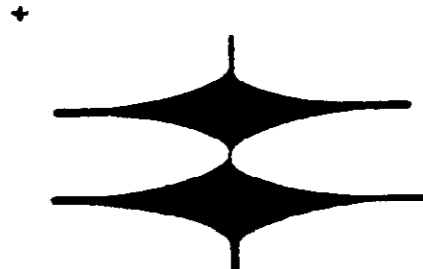
GRADING ACKNOWLEDGEMENT:

I CERTIFY THAT IN LIEU OF COMPLETION OF GRADING AND IN ACCORDANCE WITH CHAPTER 56.04 OF THE OMAHA MUNICIPAL CODE, A BOND HAS BEEN FURNISHED TO THE CITY OF OMAHA TO INSURE GRADING OF THE WITHIN SUBDIVISION AS REQUIRED BY SAID ORDINANCE.

DATE: SEPT 28, 1970

*Edward M. Bunker*  
E-2976  
PROFESSIONAL ENGINEER  
REGISTERED ENGINEER  
KAUSS  
E-2976  
STATE OF NEBRASKA

DOUGLAS COUNTY SURVEYOR'S OFFICE  
*Thos. P. Bunker*



GOLLEHON, SCHEMME & ASSOCIATES, INC.  
ARCHITECTS ENGINEERS PLANNERS  
OMAHA • DAVENPORT

15 2 1