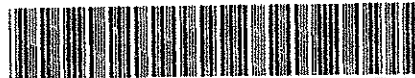


P.M.



1980 306 DEED



07546 94 306-321

RECEIVED

JUN 15 3 42 PM '94

GEORGE J. BUGLEWICZ  
REGISTER OF DEEDS  
PLAS COUNTY, NE

FEE	84.50	R	FB	New	4480
DEL	18	DE	COMP	OP	
LEGAL PG	SCAN		FV		

*Handwritten initials*

CORPORATION ACKNOWLEDGEMENT

ASKA }  
GLAS } SS

DAY OF March, 1994, A.D., BEFORE ME A NOTARY PUBLIC IN AND FOR SAID COUNTY PERSONALLY  
METE NAMED JUDITH ATKINS, TRUST OFFICER FOR THE UNITED STATES NATIONAL BANK OF OMAHA, TRUSTEE, NOW  
WEST BANK NEBRASKA, NATIONAL ASSOCIATION, TRUSTEE, WHO IS PERSONALLY KNOWN TO ME TO BE THE  
ON WHOSE NAME IS AFFIXED TO THE INSTRUMENT AS TRUST OFFICER OF SAID ASSOCIATION, AND SHE  
THE EXECUTION THEREFORE TO BE HER VOLUNTARY ACT AND DEED AS SUCH OFFICER AND VOLUNTARY ACT  
AND ASSOCIATION.

AND OFFICIAL SEAL THE LAST DATE AFORESAID

*Carol Richardson Cooper*  
NOTARY PUBLIC

EXPIRES ON THE 11 DAY OF Sept, 1996, A.D.



APPROVALS OF CITY ENGINEER OF OMAHA

GIVE THIS PLAT OF WORLD COMMUNICATIONS PARK ( LOTS 1 THRU 8, INCLUSIVE )  
CONFORMS TO CITY STANDARDS THIS 6<sup>th</sup> DAY OF April, 1994, A.D.

*George Abbe*  
CITY ENGINEER

STATE THAT ADEQUATE PROVISIONS HAVE BEEN MADE FOR COMPLIANCE WITH CHAPTER  
18A MUNICIPAL CODE THIS 14<sup>th</sup> DAY OF JUNE, 1994, A.D.

*M. DeSela*  
CITY ENGINEER

# COMMUNICATIONS PARK SECTION 23, T 16 N, R 12 E OF THE 6TH P.M. DOUGLAS COUNTY, NEBRASKA

## TREASURER'S CERTIFICATE

REGULAR OR SPECIAL TAXES DUE OR DELINQUENT  
IN THE SURVEYOR'S CERTIFICATE AND EMBRACED IN  
RECORDS OF THIS OFFICE.

1994 A.D.  
Louis R. Rontano  
COUNTY TREASURER

STATE OF NEBRASKA }  
COUNTY OF DOUGLAS } SS

ON THIS 14 DAY OF May  
CAME THE ABOVE NAMED JUDITH  
KNOWN AS NORWEST BANK NEB  
IDENTICAL PERSON WHOSE NAME  
ACKNOWLEDGES THE EXECUTION  
AND DEED OF SAID ASSOCIATION

WITNESS MY HAND AND OFFICIAL SEAL

MY COMMISSION EXPIRES ON THE

## RESOLUTION OF CITY PLANNING BOARD

COMMUNICATIONS PARK WAS APPROVED BY THE CITY PLANNING BOARD  
ON THE DAY OF April, 1994 A.D.

[Signature]  
CHAIRMAN


## APPROVALS

I HEREBY APPROVE THIS PLAT  
AS TO THE DESIGN STANDARDS

## ENGINEER'S CERTIFICATE

COMMUNICATIONS PARK WAS REVIEWED BY THE DOUGLAS COUNTY  
ON THE DAY OF April, 1994 A.D.

[Signature]  
COUNTY ENGINEER



I HEREBY CERTIFY THAT ADEQUATE  
CONSIDERATION HAS BEEN GIVEN TO ALL  
REQUIREMENTS OF THE OMAHA MUNICIPAL CODE

## COUNCIL ACCEPTANCE

COMMUNICATIONS PARK WAS APPROVED AND ACCEPTED BY THE  
COUNCIL ON THE DAY OF May, 1994 A.D.

[Signature]



# WORLD COMM PART OF THE SE 1/4, SECTION DOUGLAS CO

RECITE

OF NEBRASKA, DO HEREBY CERTIFY THAT A SURVEY  
S PARK HAS BEEN MADE BY ME OR UNDER MY DIRECT  
NCH X 24-INCH PINCHED PIPE) AT THE CORNERS OF  
L CURVES UPON COMPLETION OF THE GRADING, AND  
EKA IN ORDER TO INSURE THE PLACING OF PERMANENT  
K, THE LIMITS AND BOUNDARIES OF SAID PLAT ARE AS FOLLOWS:  
2E OF THE 6TH P.M., DOUGLAS COUNTY, NEBRASKA, MORE



COUNTY T

THIS IS TO CERTIFY THAT I FIND N:  
AGAINST THE PROPERTY DESCRIBED  
THIS PLAT AS SHOWN BY THE REC

DATED THIS 13 DAY OF JUNE

3 THE SOUTH LINE OF SAID SECTION 23, N89°48'56"W  
TO THE NORTH LINE OF STATE STREET, SAID POINT ALSO  
NE, N89°48'56"W, 2468.34 FEET TO THE EAST LINE OF  
MEET TO THE SOUTHERLY RIGHT OF WAY LINE OF  
E, THE FOLLOWING FIVE (5) COURSES;

CURVE TO THE RIGHT;  
ORD BEARING N79°19'07"E,

*Charles W. Ahern*  
CHARLES W. AHERN  
REGISTERED LAND SURVEYOR L.S. 112



APPRO

THIS PLAT OF WORLD COMMUNICAT  
OF THE CITY OF OMAHA THIS 4th

COUNTY EN

THIS PLAT OF WORLD COMMUNICAT  
ENGINEER'S OFFICE ON THIS 5th

NOW KNOWN AS NORWEST BANK NEBRASKA,  
THE LAND EMBRACED WITHIN THIS PLAT AND  
TO BE SUBDIVIDED INTO LOTS AND STREETS, SAID  
LOTS TO BE NUMBERED AS SHOWN (LOTS 1 THRU 8,  
SHOWN ON THIS PLAT AND WE HEREBY DEDICATE  
AND WE DO ALSO GRANT THE EASEMENTS SHOWN ON  
THE PURPOSES NOTED. WE DO FURTHER GRANT A  
PUBLIC POWER DISTRICT, AND ANY COMPANY WHICH  
SYSTEM WITHIN THE BOUNDARIES OF THIS PLAT, AND  
ELECT AND OPERATE, MAINTAIN, REPAIR, AND RENEW  
LINES, SUSTAINING WIRES, CROSS ARMS, GUYS AND  
POLES FOR THE CARRYING AND TRANSMISSION OF ELECTRIC  
SIGNALS AND SOUNDS OF ALL KINDS, INCLUDING  
TRAVELING ON, OVER, THROUGH, UNDER AND ACROSS A FIVE  
BOUNDARY LINES OF ALL LOTS; AN EIGHT (8) FEET WIDE  
STRIP LOTS; AND A SIXTEEN (16) FEET WIDE STRIP OF LAND  
WHICH ARE NOT ADJACENT TO PRESENTLY PLATTED AND  
WHICH ARE LOCATED TO AN EIGHT (8) FEET WIDE STRIP WHEN THE  
OWNER GRANT A PERPETUAL EASEMENT TO THE METROPOLITAN  
DISTRICT, INSTALL, OPERATE, MAINTAIN, REPAIR AND RENEW  
AND EXTEND TUBERCULAR PIPES FOR THE TRANSMISSION OF

OMAHA CITY

THIS PLAT OF WORLD COMMUNICAT  
CITY COUNCIL OF OMAHA THIS 3rd

*W. A. M.*

SURVEYOR'S CERTIFICATE

I, CHARLES W. AHERN, A REGISTERED LAND SURVEYOR IN THE STATE OF NEBRASKA, DO HEREBY CERTIFY THAT THE SURVEY OF THE OUTER BOUNDARIES OF THIS PLAT OF WORLD COMMUNICATIONS PARK HAS BEEN MADE UNDER MY SUPERVISION, AND THAT I SHALL INSTALL PERMANENT IRON PINS (1-INCH X 24-INCH PINK) AT ALL LOTS, STREETS, ANGLE POINTS, AND THE TERMINAL POINTS OF ALL CURVES UPON WHICH A BOND HAS BEEN FURNISHED TO THE CITY OF OMAHA, NEBRASKA IN ORDER TO INSTALL IRON PINS AS SHOWN ON THIS PLAT OF WORLD COMMUNICATIONS PARK, THE LIMITS AND EXTENT THEREOF.

A TRACT OF LAND LOCATED IN THE SE 1/4 OF SECTION 23, T16N, R12E OF THE 6TH P.M. PARTICULARLY DESCRIBED AS FOLLOWS:

COMMENCING AT THE SE CORNER OF SAID SECTION 23; THENCE ALONG THE SOUTH LINE (ASSUMED BEARING), 139.07 FEET; THENCE N00°11'04"E, 50.00 FEET TO THE NORTH LINE (BEING THE TRUE POINT OF BEGINNING; THENCE ALONG SAID NORTH LINE, N89°48'56"W, 244.78 FEET TO THE WEST LINE OF 78TH STREET; THENCE ALONG SAID EAST LINE, N00°01'37"E, 717.66 FEET TO THE SOUTHERLY RIGHT OF WAY LINE, THE FOLLOWING FINISH COURSES:

- 1) N68°27'39"E, 1389.29 FEET;
- 2) N60°15'53"E, 74.94 FEET;
- 3) N60°18'56"E, 182.50 FEET TO THE BEGINNING OF A NON-TANGENT CURVE TO THE RIGHT;
- 4) ALONG SAID CURVE, HAVING A RADIUS OF 718.51 FEET AND A CHORD BEARING N79°19'11"E, 249.71 FEET, AN ARC DISTANCE OF 250.98 FEET;
- 5) N89°19'11"E, 692.70 FEET TO THE WEST LINE OF 72ND STREET;

THENCE ALONG SAID WEST LINE, THE FOLLOWING THREE (3) COURSES:

- 1) S05°50'39"E, 501.00 FEET;
- 2) S00°08'59"E, 860.51 FEET;
- 3) S33°20'16"W, 70.39 FEET TO THE TRUE POINT OF BEGINNING,

CONTAINING AN AREA OF 67.232 ACRES, MORE OR LESS.

DATED THIS 14<sup>th</sup> DAY OF March, 1994 A.D.

  
CHARLES W. AHERN  
REGISTERED LAND SURVEYOR

DEDICATION

KNOW ALL MEN BY THESE PRESENTS:

THAT WE, THE UNITED STATES NATIONAL BANK OF OMAHA, TRUSTEE, NOW KNOWN AS NORWEL NATIONAL ASSOCIATION, TRUSTEE, JUDITH ATKINS, TRUST OFFICER, OF THE LAND EMBRACED AND DESCRIBED IN THE SURVEYOR'S CERTIFICATE, HAVE CAUSED THE SAME TO BE SUBDIVIDED IN SUBDIVISION TO BE KNOWN AS WORLD COMMUNICATIONS PARK, THE LOTS TO BE NUMBERED INCLUSIVE), AND WE APPROVE THE DISPOSITION OF THE PROPERTY AS SHOWN ON THIS PLAT TO THE PUBLIC, FOR PUBLIC USE, THE STREETS AS SHOWN HEREON AND WE DO ALSO GRANT THIS PLAT TO THE AGENCIES DESIGNATED AND THEIR ASSIGNS FOR THE PURPOSES NOTED. PERPETUAL EASEMENT IN FAVOR OF AND GRANTING TO THE OMAHA PUBLIC POWER DISTRICT HAS BEEN GRANTED A FRANCHISE TO PROVIDE A CABLE TELEVISION SYSTEM WITHIN THE BC U.S. WEST COMMUNICATIONS, THEIR SUCCESSORS AND ASSIGNS, TO ERECT AND OPERATE, MAINTAIN UNDERGROUND CABLES OR CONDUITS, POLES WITH NECESSARY SUPPORTS, SUSTAINING WIRE ANCHORS AND OTHER INSTRUMENTALITIES, AND EXTEND THEREON WIRE FOR THE CARRYING OF CURRENT FOR LIGHT, HEAT, POWER AND FOR THE TRANSMISSION OF SIGNALS AND SOUNDS. SIGNALS PROVIDED BY A CABLE TELEVISION SYSTEM, AND THE RECEPTION ON, OVER, THROUGH AND UNDER A (5) FEET WIDE STRIP OF LAND ABUTTING THE FRONT AND THE SIDE BOUNDARY LINES OF ALL LOTS; AND A SIXTEEN (16) FEET WIDE STRIP OF LAND ABUTTING THE REAR BOUNDARY LINES OF ALL INTERIOR LOTS; AND A SIXTEEN (16) FEET WIDE STRIP OF LAND ABUTTING THE REAR BOUNDARY LINES OF ALL EXTERIOR LOTS THAT ARE NOT ADJACENT TO RECORDED LOTS. THE SIXTEEN (16) FEET WIDE EASEMENT WILL BE REDUCED TO AN EIGHT (8) FEET WIDE EASEMENT IF ADJACENT LAND IS SURVEYED, PLATTED AND RECORDED. WE DO FURTHER GRANT A PERPETUAL EASEMENT TO THE UTILITIES DISTRICT OF OMAHA, THEIR SUCCESSORS AND ASSIGNS, TO ERECT, INSTALL, MAINTAIN, OPERATE AND REPAIR

COUNTY TREASURER

WITNESS MY HAND AND OFFICIAL SEAL

MY COMMISSION EXPIRES ON THE \_\_\_

OF CITY PLANNING BOARD

PARK WAS APPROVED BY THE CITY PLANNING BOARD  
OF April 1994 A.D.

CHAIRMAN

APPROVALS OF C

I HEREBY APPROVE THIS PLAT OF W  
AS TO THE DESIGN STANDARDS THIS

ER'S CERTIFICATE

PARK WAS REVIEWED BY THE DOUGLAS COUNTY  
OF April 1994 A.D.

I HEREBY CERTIFY THAT ADEQUATE I  
53 OF THE OMAHA MUNICIPAL CODE

COUNTY ENGINEER



MUNICIPAL ACCEPTANCE

PARK WAS APPROVED AND ACCEPTED BY THE  
OF April 1994 A.D.

CITY CLERK



**KIRKHAM** ARCHITECTS  
**MICHAEL** ENGINEERS  
AND ASSOCIATES PLANNERS

D - P.O. BOX 24129, OMAHA, NE 68124  
402 - 393 - 5830

GHT;  
19'07"E,

*W. A. Shuman*  
ERN  
D SURVEYOR L.S. 112.



APPROVAL OF CITY P

THIS PLAT OF WORLD COMMUNICATIONS PARK WAS AI  
OF THE CITY OF OMAHA THIS 4th DAY OF April.

COUNTY ENGINEER'S CERTI

THIS PLAT OF WORLD COMMUNICATIONS PARK WAS RE  
ENGINEER'S OFFICE ON THIS 5th DAY OF April.

*Frank*  
COUNTY E

ORWEST BANK NEBRASKA,  
CED WITHIN THIS PLAT AND  
J INTO LOTS AND STREETS, SAID  
ED AS SHOWN (LOTS 1 THRU 8,  
PLAT AND WE HEREBY DEDICATE  
RANT THE EASEMENTS SHOWN ON  
D. WE DO FURTHER GRANT A  
RICT, AND ANY COMPANY WHICH  
BOUNDARIES OF THIS PLAT, AND  
MAINTAIN, REPAIR, AND RENEW  
IRES, CROSS ARMS, GUYS AND  
IG AND TRANSMISSION OF ELECTRIC  
YS OF ALL KINDS, INCLUDING  
ROUGH, UNDER AND ACROSS A FIVE  
ALL LOTS; AN EIGHT (8) FEET WIDE  
XTEEN (16) FEET WIDE STRIP OF LAND  
TO PRESENTLY PLATTED AND  
T (8) FEET WIDE STRIP WHEN THE  
PETUAL EASEMENT TO THE METROPOLITAN  
ERATE, MAINTAIN, REPAIR AND RENEW  
N PIPES FOR THE TRANSMISSION OF  
ADE STRIP OF LAND ABUTTING ALL  
AINING WALLS SHALL BE PLACED IN  
HRUBS, LANDSCAPING AND OTHER  
ITS HEREIN GRANTED.

1974, A.D.

OMAHA CITY COUNCIL ACCE

THIS PLAT OF WORLD COMMUNICATIONS PARK WAS AF  
CITY COUNCIL OF OMAHA THIS 3rd DAY OF May

*John Mangan*  
MAYOR

*Bill Galbo*  
CITY COUNCIL PRESIDENT


78TH STREET; THENCE ALONG SAID EAST LINE, N00°01'37"E, 717.66 FEET TO THE SOUTHERLY RIGHT OF W. INTERSTATE 680; THENCE ALONG SAID SOUTHERLY RIGHT OF WAY LINE, THE FOLLOWING FIVE (5) COURSES:

- 1) N68°27'39"E, 1389.29 FEET;
  - 2) N60°15'53"E, 74.94 FEET;
  - 3) N60°18'58"E, 182.50 FEET TO THE BEGINNING OF A NON-TANGENT CURVE TO THE RIGHT;
  - 4) ALONG SAID CURVE, HAVING A RADIUS OF 718.51 FEET AND A CHORD BEARING N79°19'07"E, 249.71 FEET, AN ARC DISTANCE OF 250.98 FEET;
  - 5) N89°19'11"E, 692.70 FEET TO THE WEST LINE OF 72ND STREET;
- THENCE ALONG SAID WEST LINE, THE FOLLOWING THREE (3) COURSES:

- 1) S05°50'39"E, 501.00 FEET;
- 2) S00°06'59"E, 860.51 FEET;
- 3) S33°20'16"W, 70.39 FEET TO THE TRUE POINT OF BEGINNING,

CONTAINING AN AREA OF 67.232 ACRES, MORE OR LESS.

DATED THIS 14<sup>th</sup> DAY OF March, 1994 A.D.

  
CHARLES W. AHERN  
REGISTERED LAND SURVEYOR L.S.

#### DEDICATION

KNOW ALL MEN BY THESE PRESENTS:

THAT WE, THE UNITED STATES NATIONAL BANK OF OMAHA, TRUSTEE, NOW KNOWN AS NORWEST BANK NATIONAL ASSOCIATION, TRUSTEE, JUDITH ATKINS, TRUST OFFICER, OF THE LAND EMBRACED WITHIN THIS DESCRIBED IN THE SURVEYOR'S CERTIFICATE, HAVE CAUSED THE SAME TO BE SUBDIVIDED INTO LOTS AND SUBDIVISION TO BE KNOWN AS WORLD COMMUNICATIONS PARK, THE LOTS TO BE NUMBERED AS SHOWN (INCLUSIVE), AND WE APPROVE THE DISPOSITION OF THE PROPERTY AS SHOWN ON THIS PLAT AND WE HERETO THE PUBLIC, FOR PUBLIC USE, THE STREETS AS SHOWN HEREON AND WE DO ALSO GRANT THE EASEMENT THIS PLAT TO THE AGENCIES DESIGNATED AND THEIR ASSIGNS FOR THE PURPOSES NOTED. WE DO FURTHER PERPETUAL EASEMENT IN FAVOR OF AND GRANTING TO THE OMAHA PUBLIC POWER DISTRICT, AND ANY CITY HAS BEEN GRANTED A FRANCHISE TO PROVIDE A CABLE TELEVISION SYSTEM WITHIN THE BOUNDARIES OF U.S. WEST COMMUNICATIONS, THEIR SUCCESSORS AND ASSIGNS, TO ERECT AND OPERATE, MAINTAIN, REPAIR UNDERGROUND CABLES OR CONDUITS, POLES WITH NECESSARY SUPPORTS, SUSTAINING WIRES, CROSS ARM ANCHORS AND OTHER INSTRUMENTALITIES, AND EXTEND THEREON WIRE FOR THE CARRYING AND TRANSMISSION OF CURRENT FOR LIGHT, HEAT, POWER AND FOR THE TRANSMISSION OF SIGNALS AND SOUNDS OF ALL KINDS, SIGNALS PROVIDED BY A CABLE TELEVISION SYSTEM, AND THE RECEPTION ON, OVER, THROUGH, UNDER AND (5) FEET WIDE STRIP OF LAND ABUTTING THE FRONT AND THE SIDE BOUNDARY LINES OF ALL LOTS; AN EIGHT (8) FEET WIDE STRIP OF LAND ABUTTING THE REAR BOUNDARY LINES OF ALL INTERIOR LOTS; AND A SIXTEEN (16) FEET WIDE STRIP OF LAND ABUTTING THE REAR BOUNDARY LINES OF ALL EXTERIOR LOTS THAT ARE NOT ADJACENT TO PRESENTLY P RECORDED LOTS. THE SIXTEEN (16) FEET WIDE EASEMENT WILL BE REDUCED TO AN EIGHT (8) FEET WIDE EASEMENT ADJACENT LAND IS SURVEYED, PLATTED AND RECORDED. WE DO FURTHER GRANT A PERPETUAL EASEMENT TO THE UTILITIES DISTRICT OF OMAHA, THEIR SUCCESSORS AND ASSIGNS, TO ERECT, INSTALL, OPERATE, MAINTAIN, REPAIR PIPELINES, HYDRANTS, VALVES AND OTHER RELATED FACILITIES, AND TO EXTEND THEREON PIPES FOR THE NATURAL GAS AND WATER ON, OVER, THROUGH, UNDER AND ACROSS A FIVE (5) FEET WIDE STRIP OF LAND ABUTTING THE STREETS AND AVENUES, WHETHER PUBLIC OR PRIVATE. NO PERMANENT BUILDINGS OR RETAINING WALLS SHALL BE ERECTED ON THE ABOVE DESCRIBED EASEMENT WAYS, BUT THE SAME MAY BE USED FOR GARDENS, SHRUBS, LANDSCAPE PURPOSES THAT DO NOT THEN OR LATER INTERFERE WITH THE AFORESAID USES OR RIGHTS HEREIN GRANTED.

IN WITNESS WHEREOF, WE DO HEREBY SET OUR HANDS THIS 14<sup>th</sup> DAY OF March, 1994

FOR

  
JUDITH ATKINS, TRUST OFFICER  
NORWEST BANK NATIONAL ASSOCIATION

S OF CITY ENGINEER OF OMAHA

AT OF WORLD COMMUNICATIONS PARK ( LOTS 1 THRU 8, INCLUSIVE )  
ADS THIS 6<sup>th</sup> DAY OF April, 1944, A.D.

  
CITY ENGINEER

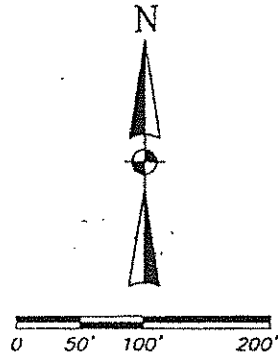
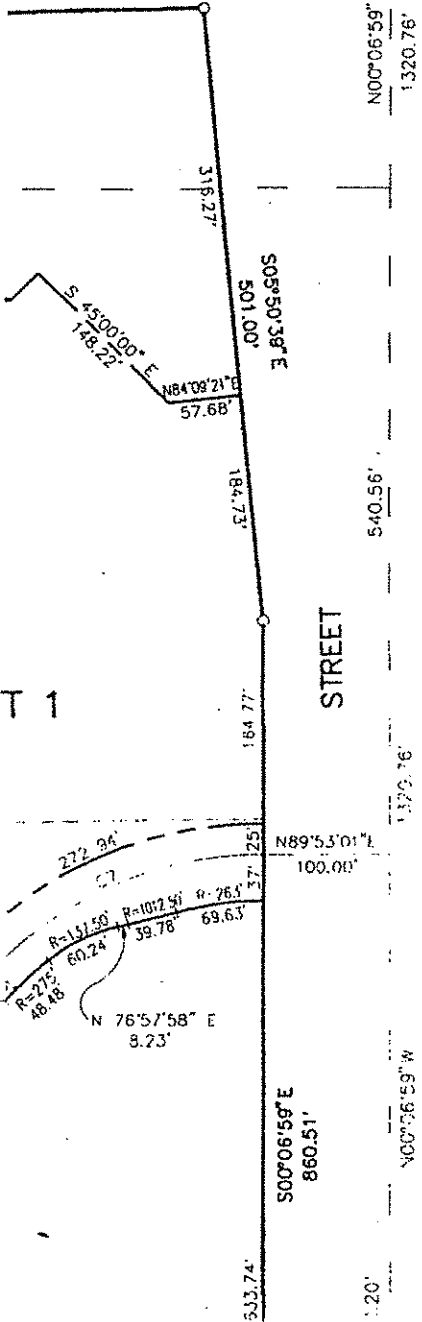
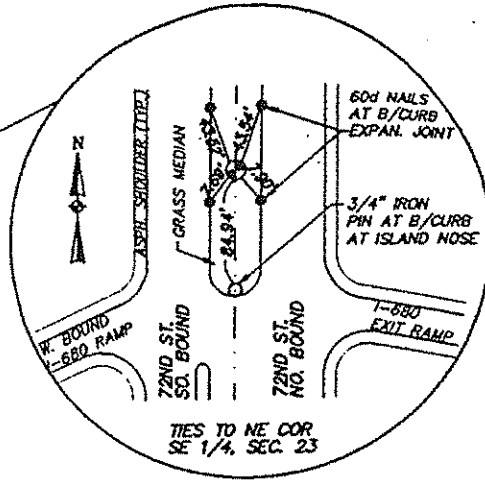
EQUATE PROVISIONS HAVE BEEN MADE FOR COMPLIANCE WITH CHAPTER  
AL CODE THIS 14<sup>th</sup> DAY OF JUNE, 1944, A.D.

  
CITY ENGINEER



P.M.

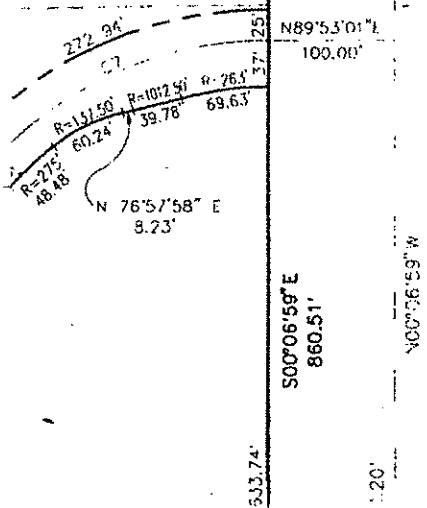
NE COR., SE 1/4  
SEC. 23, T16N, R12E



T 1

☉ CURVE DATA

CURVE	DELTA	RADIUS	ARC	TANGENT	BEARING	CHORD
C1	123°45'34"	310.00'	669.60'	580.08'	N 62°03'51" E	546.82'
C2	22°16'00"	300.00'	116.59'	59.04'	S 67°11'22" E	115.86'
C3	16°13'48"	300.00'	84.98'	42.78'	S 08°09'36" E	84.70'
C4	27°57'08"	300.00'	146.36'	74.67'	S 02°17'56" E	144.91'
C5	124°59'05"	300.00'	654.42'	576.11'	N 74°10'11" E	532.17'
C6	94°53'47"	300.00'	496.88'	326.80'	N 89°12'50" E	442.00'
C7	48°07'05"	300.00'	251.95'	133.94'	S 65°49'29" W	244.61'



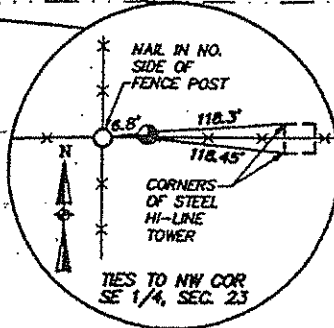




NW COR., SE 1/4  
SEC. 23, T16N, R12E

S89°57'12" E  
1310.33'

N00°01'37" E  
1317.60'



S89°53'04" E  
1311.98'

STREET

1317.60'

N68°27'39" E

10' ESMT. TO NORTHWESTERN BELL  
BK. 474, P. 529

N00°01'37" E

N00°01'37" E

78TH

717.66'

256.00'  
(233.76')

PERMANENT 40' SEWER  
AND DRAINAGE EASEMENT  
TO CITY OF OMAHA

10' ESMT. TO  
NORTHWESTERN BELL  
BK. 474, P. 529

LOT 5

S 47°30'01" E  
417.95'

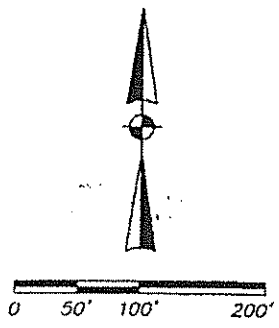
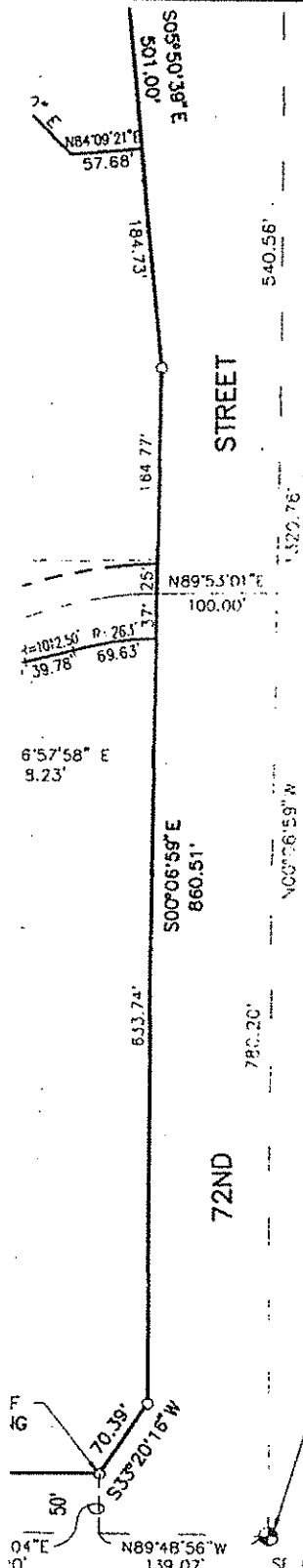
COMMUNICATIONS CI

WORLD

615.60'

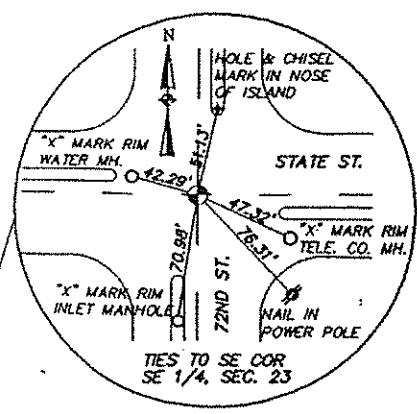
OUTSIDE ADVERTISING  
CONTROL LINE  
BK. 469, P. 519

(115.20')  
51' 04" 51'  
(95.28')

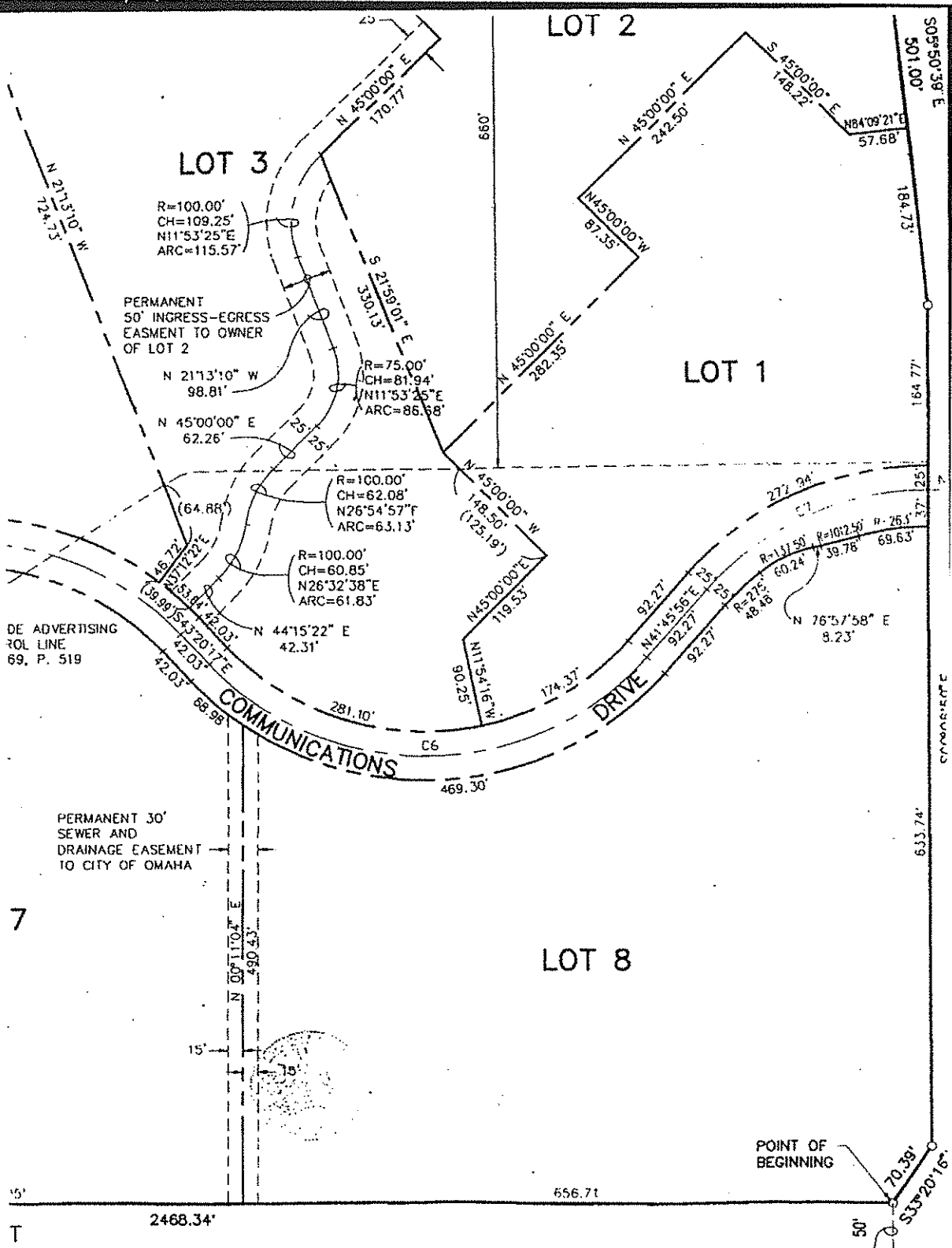


**CURVE DATA**

CURVE	DELTA	RADIUS	ARC	TANGENT	BEARING	CHORD
01	123°45'34"	310.00'	669.60'	580.08'	N 62°03'51" E	546.82'
02	22°16'00"	300.00'	116.59'	59.04'	S 67°11'22" E	115.86'
03	167°3'48"	300.00'	84.98'	42.78'	S 08°09'36" E	84.70'
04	27°57'08"	300.00'	146.36'	74.67'	S 02°17'56" E	144.91'
05	124°59'05"	300.00'	654.42'	576.11'	N 74°10'11" E	532.17'
06	94°53'47"	300.00'	496.88'	326.80'	N 89°12'50" E	442.00'
07	48°07'05"	300.00'	251.95'	133.94'	S 65°49'29" W	244.61'



SE. COR., SE 1/4  
 SEC. 23, T16N, R12E  
 (POINT OF COMMENCEMENT)



DE ADVERTISING  
 ROL LINE  
 69, P. 519

PERMANENT 30'  
 SEWER AND  
 DRAINAGE EASEMENT  
 TO CITY OF OMAHA

7

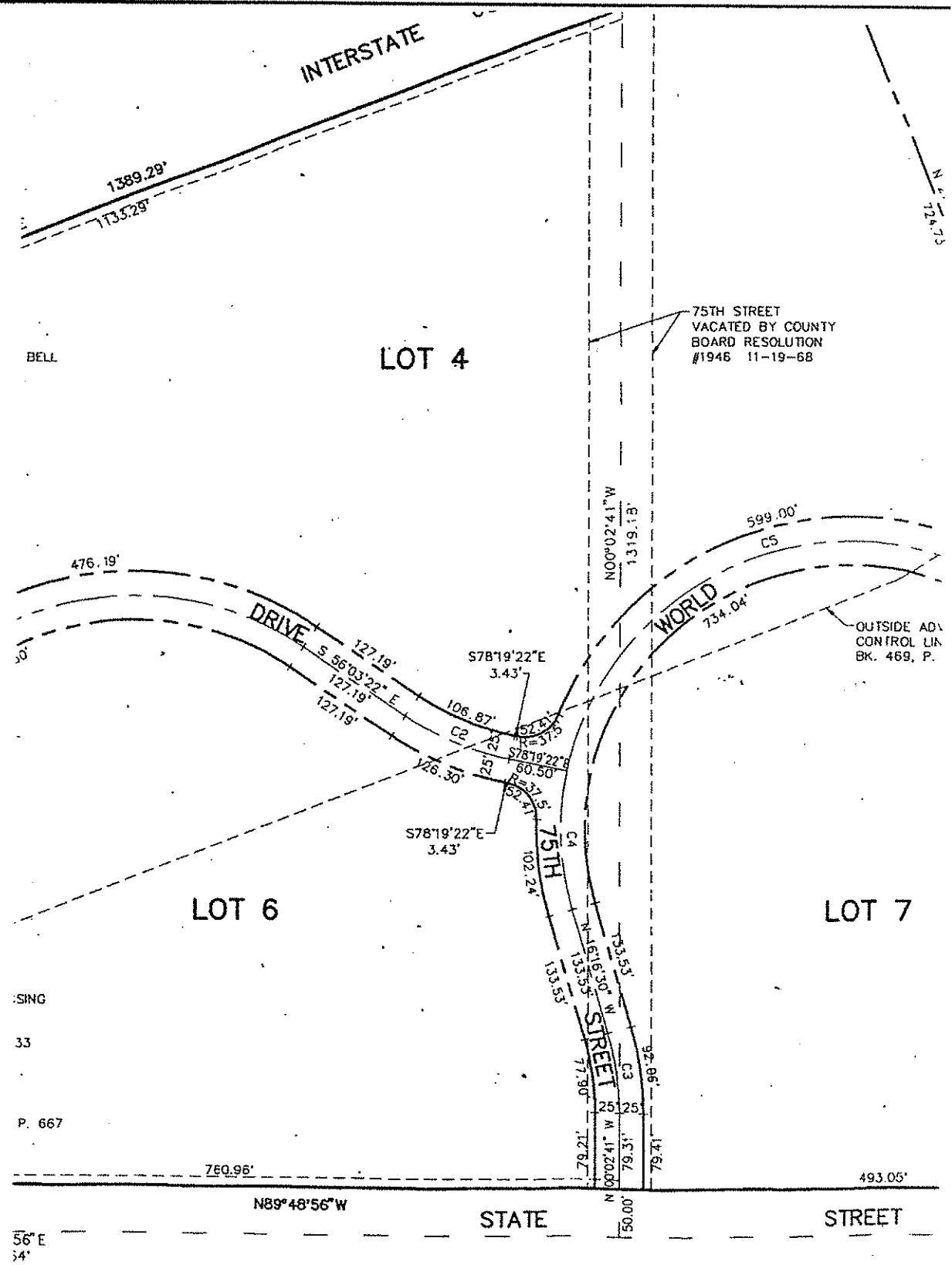
15'  
 T

**LEGEND**

- O PIN FOUND
- (45.00') DIMENSIONS IN PARENTHESES ARE EASEMENT DIMENSIONS.

**CHAM** ARCHITECTS  
**HAEL** ENGINEERS  
**ASSOCIATES** PLANNERS

OX 24129, OMAHA, NE 68124  
 5830

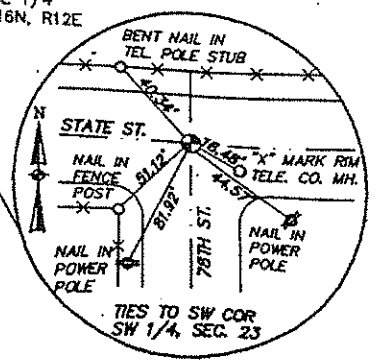
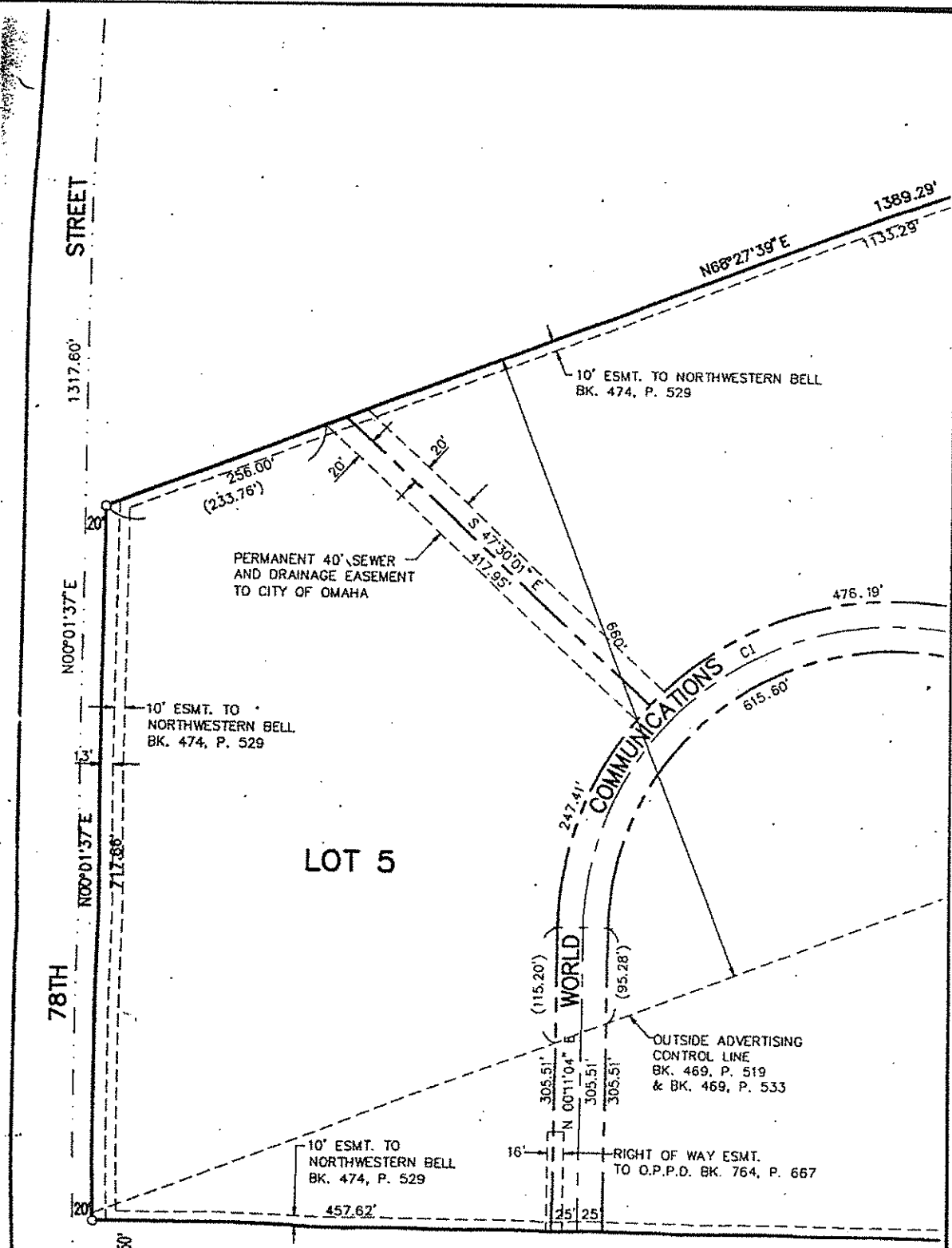


ACCESS FROM LOTS 2 THROUGH 5, INCLUSIVE, ONTO I-680, AND  
 AND 8 ONTO 72ND STREET WILL NOT BE ALLOWED.  
 ACCESS MAY BE ALLOWED VIA WORLD COMMUNICATIONS DRIVE ONTO 72ND STREET.  
 THIS IS BASED ON THE ARC DEFINITION.



**KIRKHAM  
 MICHAEL  
 AND ASSOCIATES**

9110 WEST DODGE ROAD - P.O. BOX 241  
 402 - 393 - 5630



**NOTES**

DIRECT VEHICULAR ACCESS FROM LOTS 2 FROM LOTS 1, 2 AND 8 ONTO 72ND STREET ACCESS WILL ONLY BE ALLOWED VIA WORLD

ALL CURVE DATA IS BASED ON THE ARC