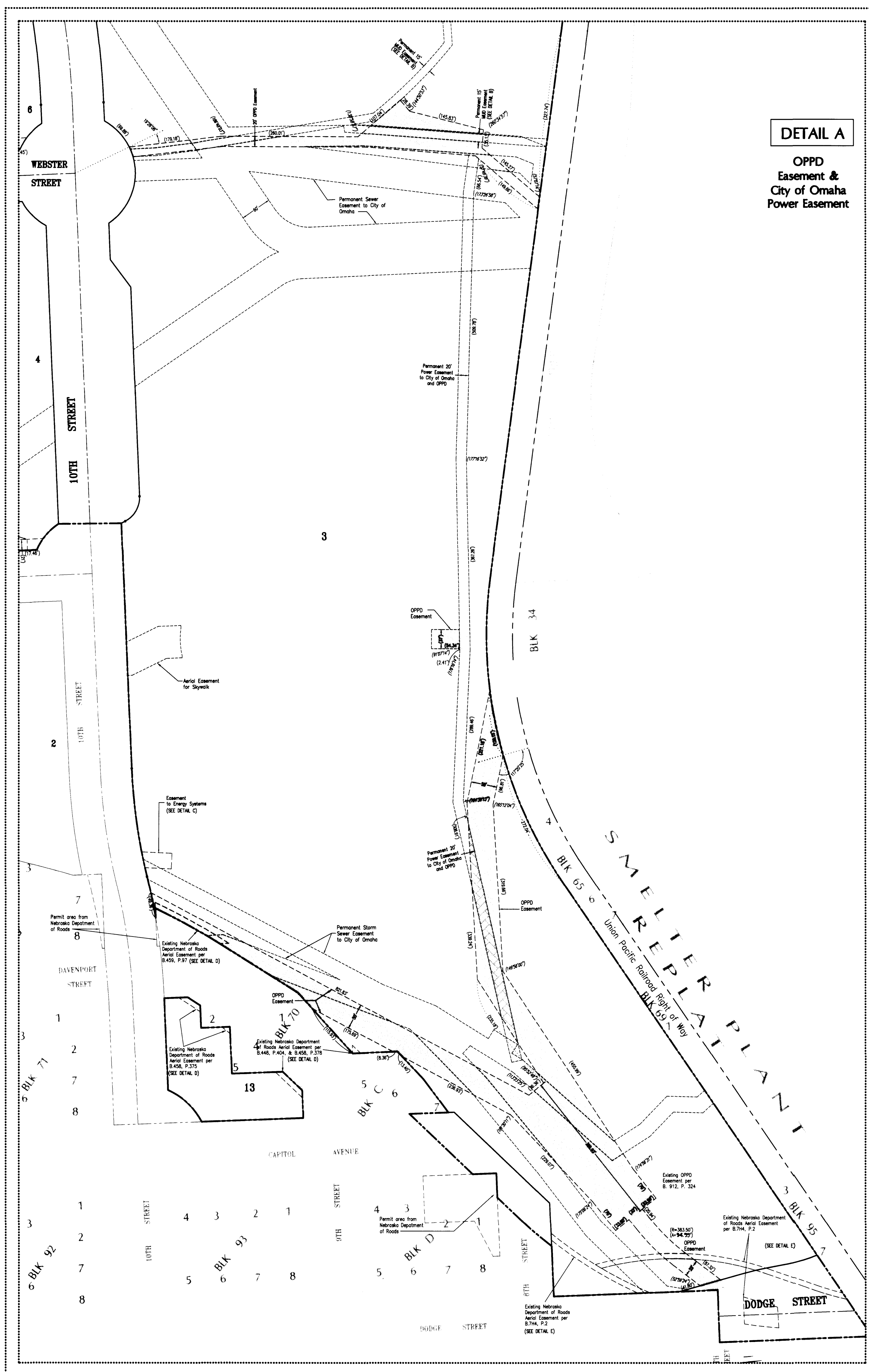


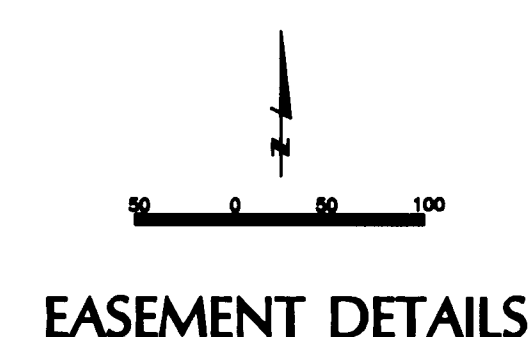
UNION PACIFIC PLACE

Lots 3 through 13, inclusive being a replatting of Blocks 2, 3, 4, 5, 30, 31, 35, 36, 64, 94, 299, 300, 311, 312, 313, 314, 315, 316, 322, 323, 324, 325, 326, 327, 329, 330, 331, 332, 333, 334, 354, 355, 356, 357, 358, and 359, ORIGINAL CITY OF OMAHA, a subdivision, as surveyed, lithographed and recorded in Douglas County, Nebraska; TOGETHER WITH Part of Blocks 1, 6, 28, 29, 63, 65, 69, 70, 95, 286, 317, 321, 328, 335, 360, C, M, N, O, P, and Q, ORIGINAL CITY OF OMAHA; AND ALSO TOGETHER WITH Part of 7th, 8th, 9th, 10th, 11th, 12th, 13th, 14th, Dodge, Capitol, Davenport, Chicago, Cass, California, Webster, Burt, Cumming, Izard, Nicholas, Napoleon, Chestnut and Elm Streets and the alleys through the aforesaid Blocks, as dedicated in the ORIGINAL CITY OF OMAHA AND ALSO TOGETHER WITH part of Abbott Drive as acquired for right of way; AND ALSO TOGETHER WITH Tax Lot 4, in the Northeast Quarter of Section 15, Township 15 North, Range 13 East of the 6th P.M., Douglas County, Nebraska.

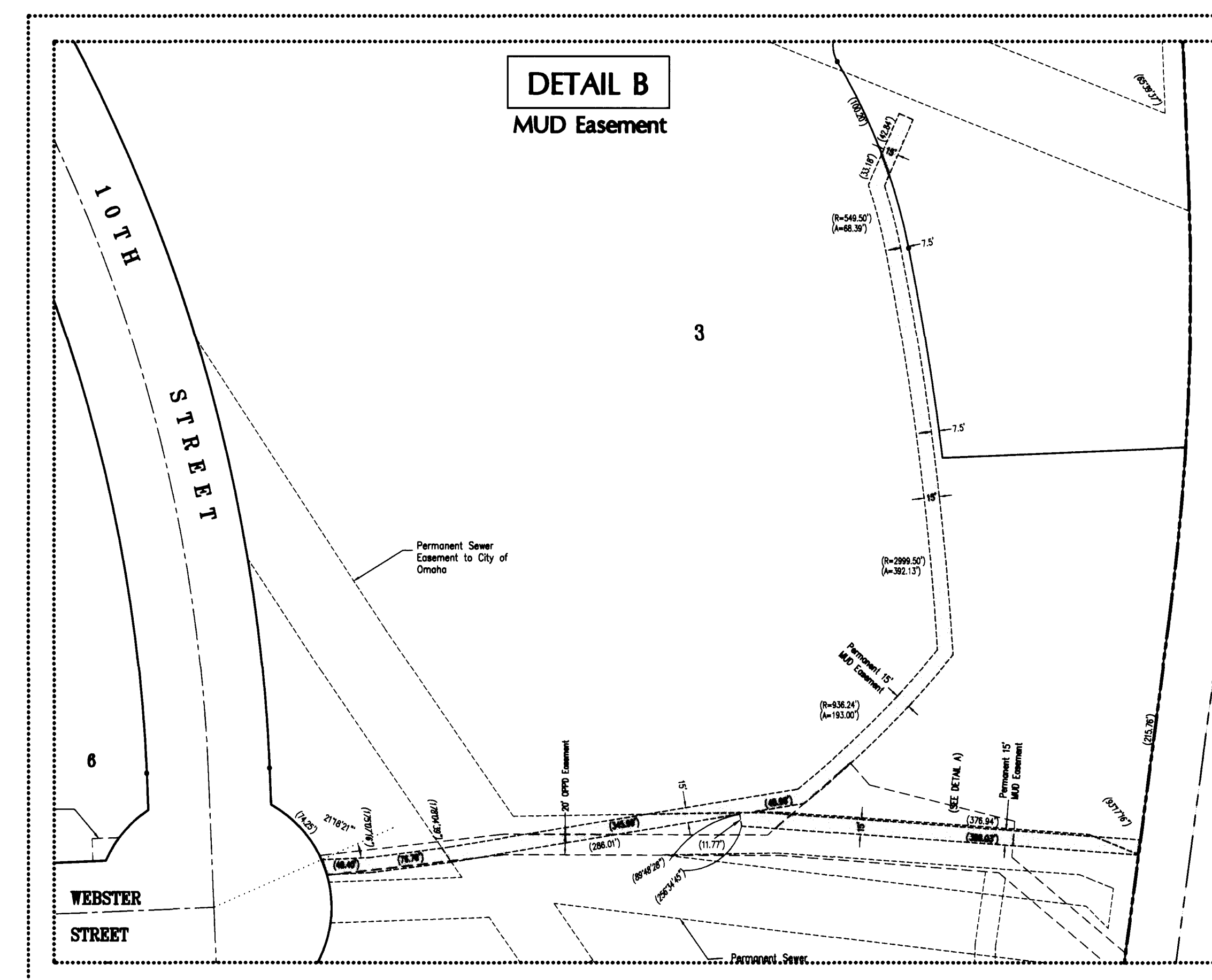
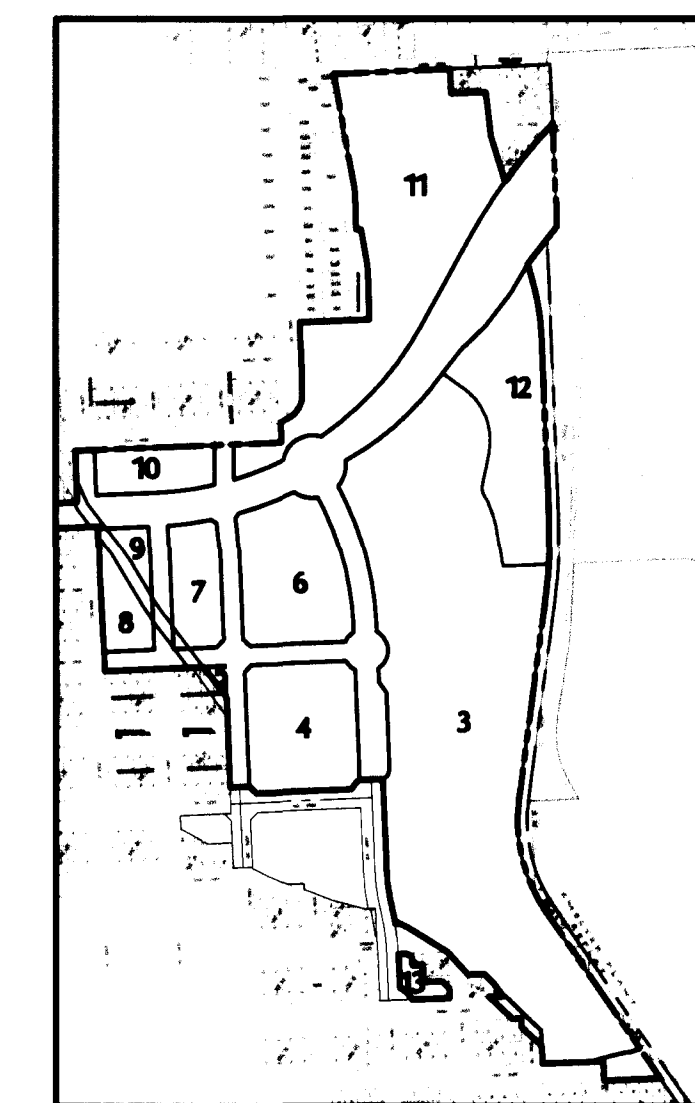


DETAIL A

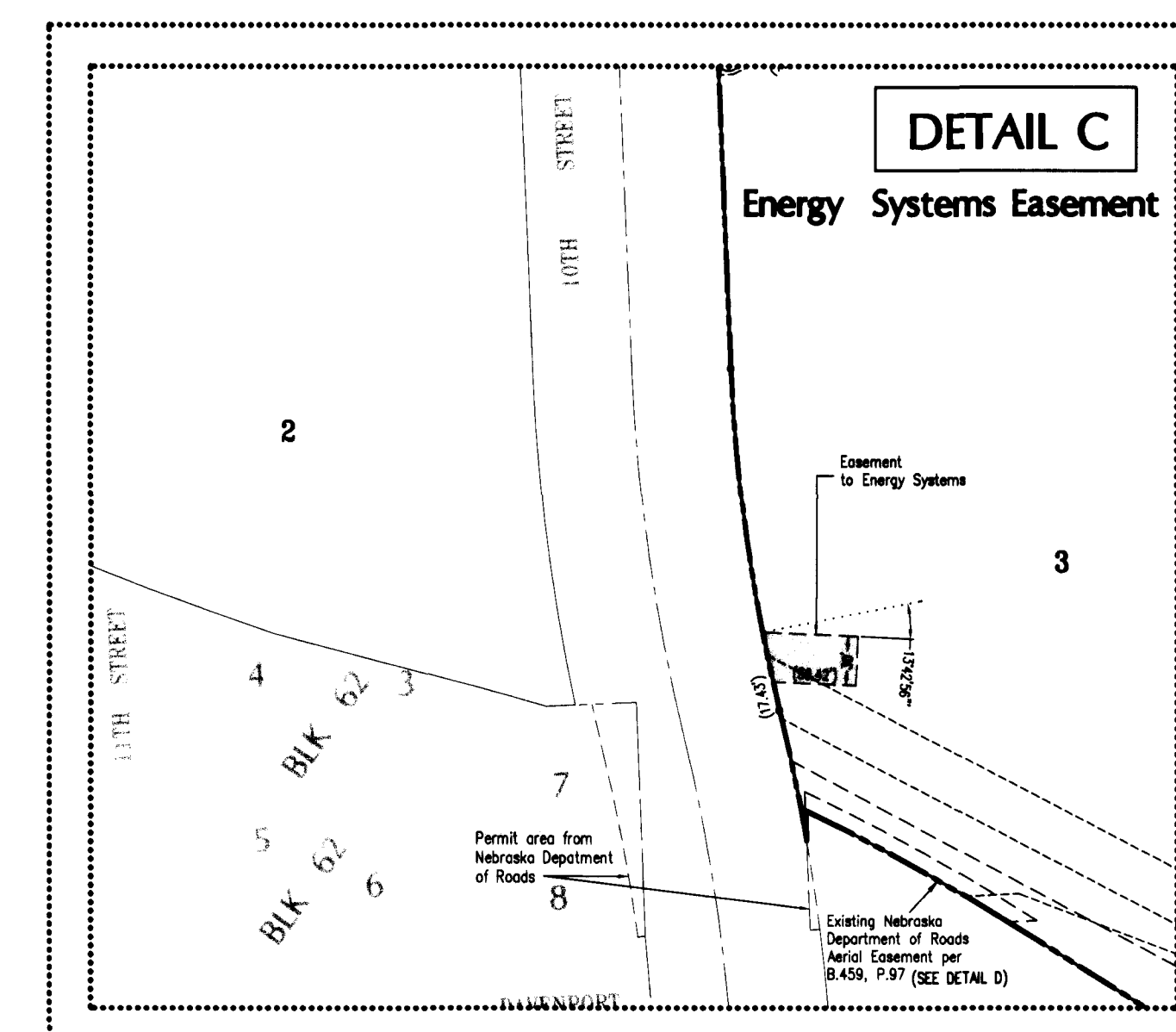
**OPPD
Easement &
City of Omaha
Power Easement**



EASEMENT DETAILS



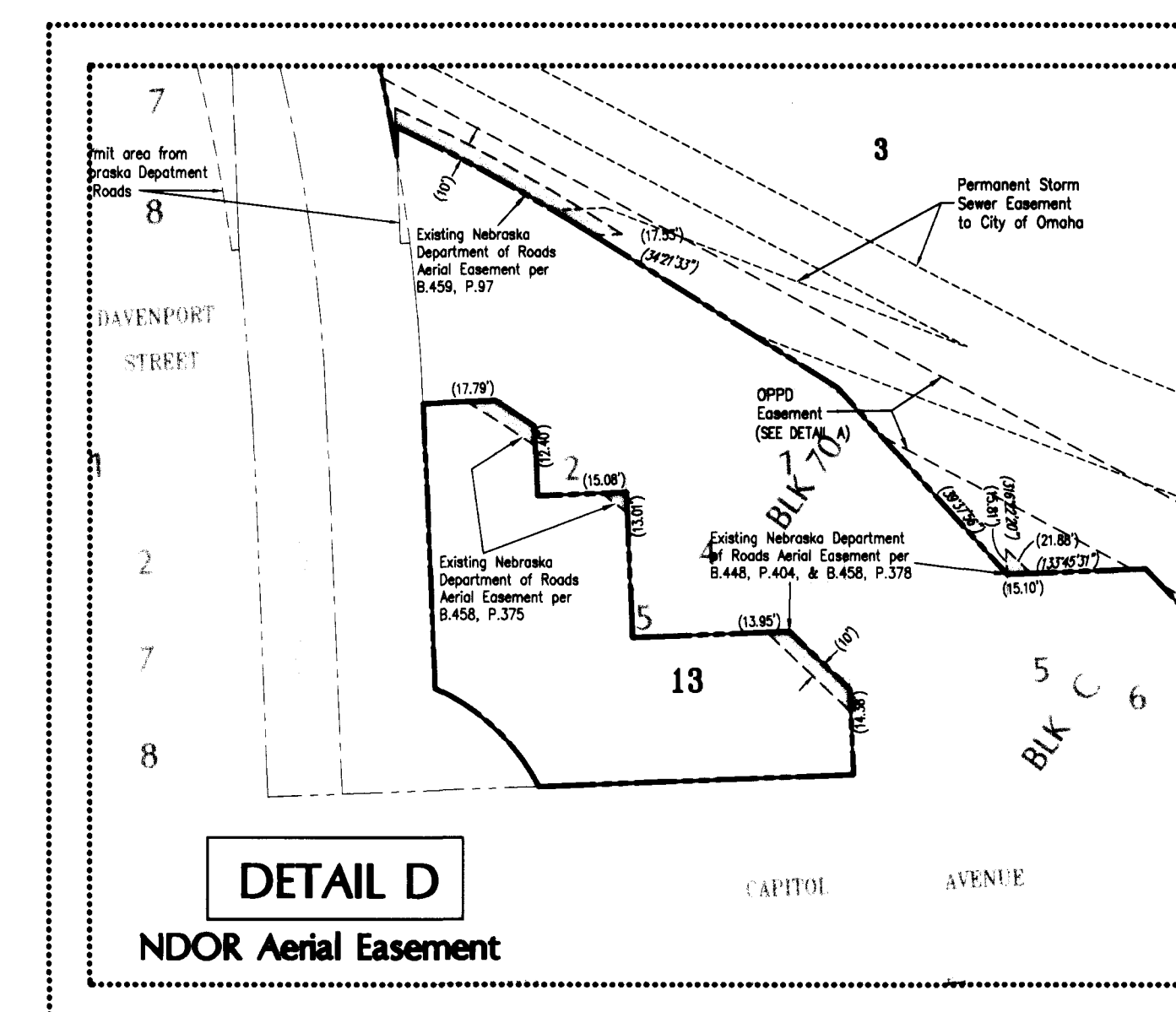
DETAIL B
MUD Easement



DETAIL C

Systems Easement

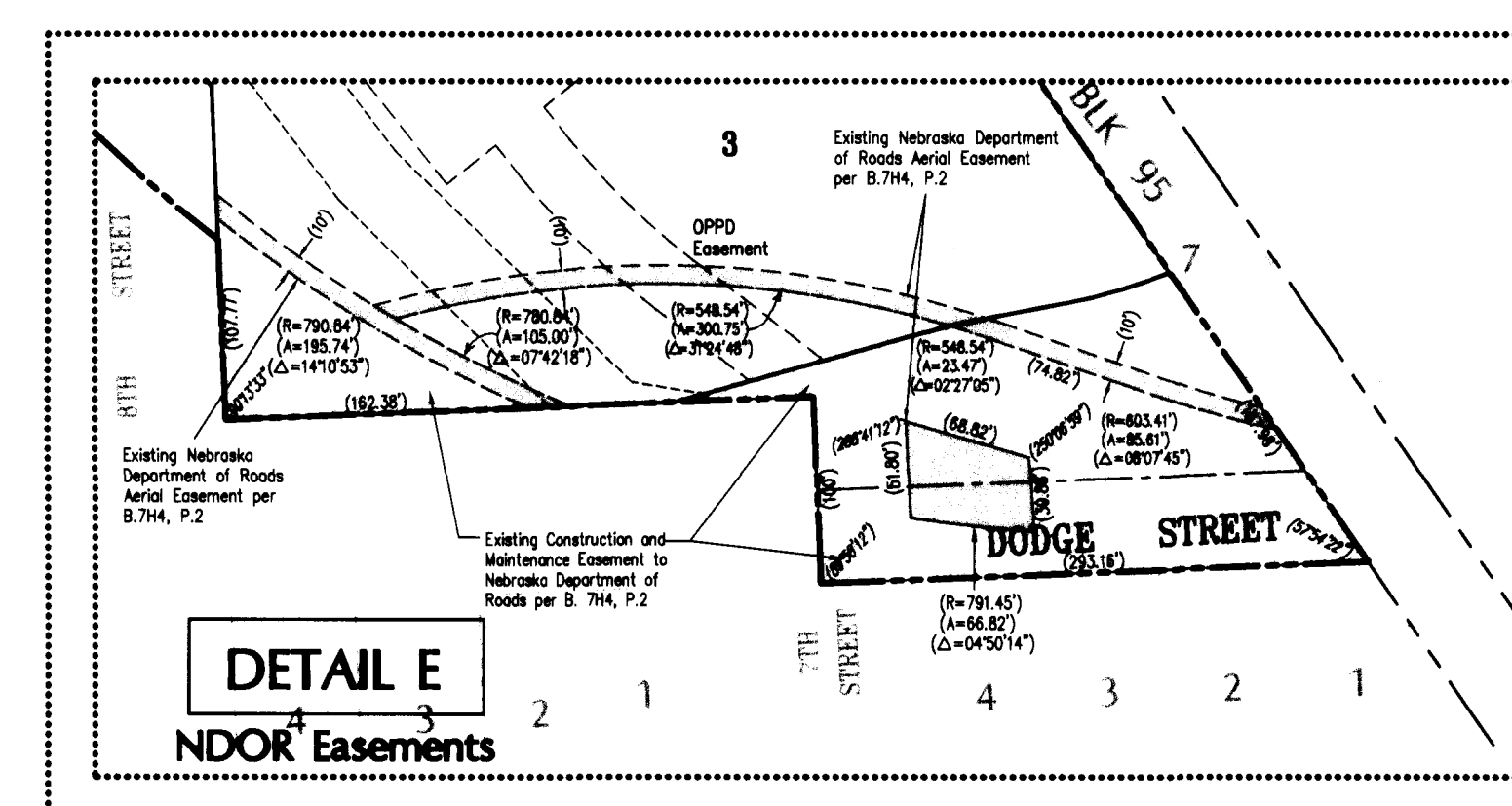
Energy Systems Easement



DETAIL D

OR Aerial Easement

NDOR Aerial Easement



DETAIL E

NDOR⁴ Easements³

NDOR⁴ Easements