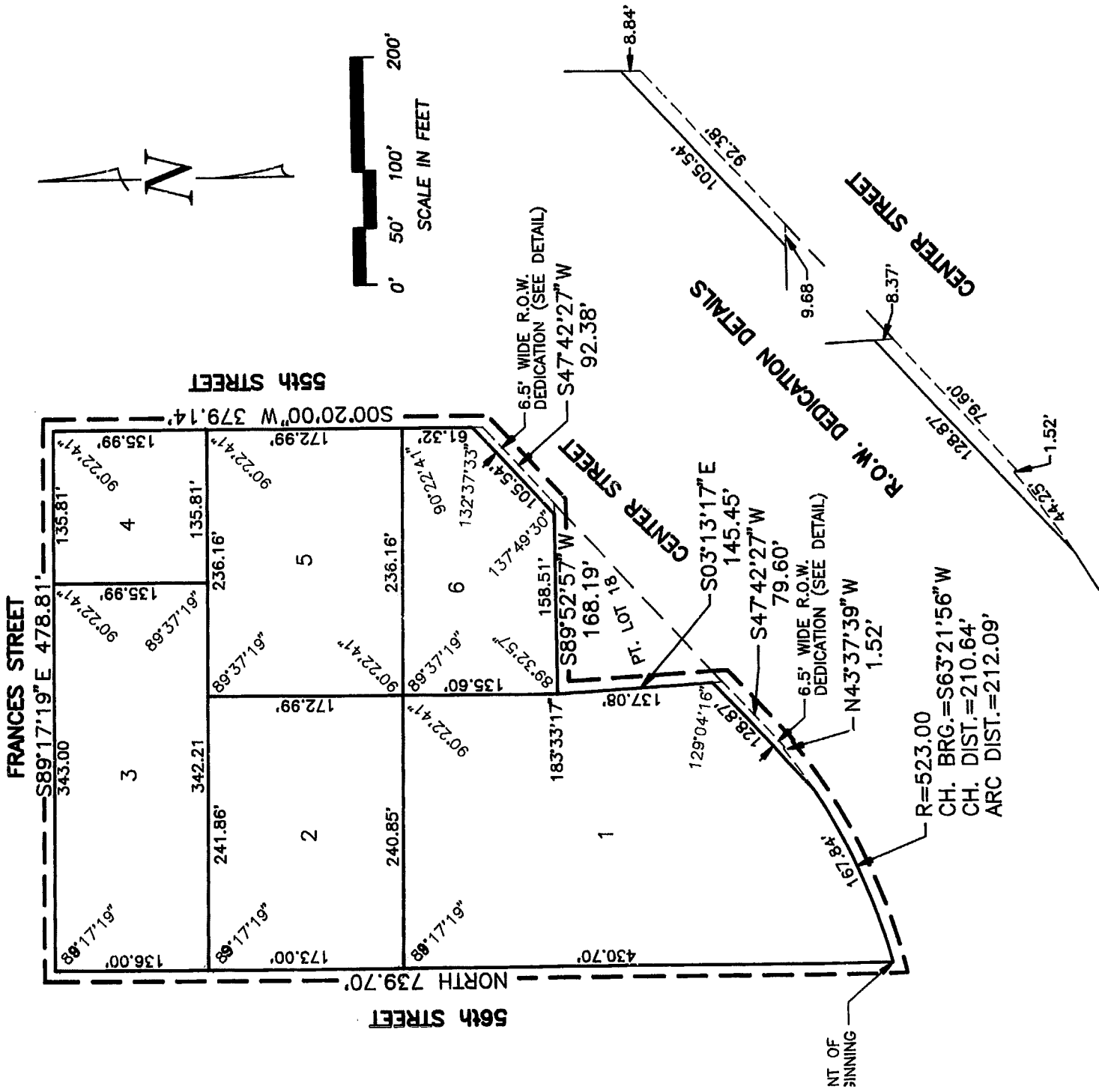


ALMA'S ADDITION

LOTS 1 THRU 6 INCLUSIVE

REPLAT OF THE WEST 249 FEET OF LOT 18, BLOCK 4, BROOKLINE, AN ADDITION TO THE CITY OF OMAHA AS SURVEYED, PLATTED AND RECORDED IN DOUGLAS COUNTY, NEBRASKA, EXCEPT THAT PART OF SAID LOT 18 TAKEN BY THE CITY OF OMAHA FOR WIDENING CENTER STREET TOGETHER WITH ALL OF LOT 17 IN SAID BLOCK 4 LYING NORTH OF AND SOUTH OF THE ABANDONED MISSOURI PACIFIC RAILROAD TRACKS, AND WITH LOTS 5 THRU 10 INCLUSIVE, BLOCK 1 AND LOTS 5 THRU 9 INCLUSIVE, BLOCK 2 IN HOOK'S SUBDIVISION, AND WITH LOTS 15 AND 16, BLOCK 4 OF SAID BROOKLINE TOGETHER WITH VACATED 55TH AVENUE LYING SOUTH OF THE SOUTH LINE OF FRANCES STREET AND NORTH OF THE NORTH LINE OF THE ABANDONED MISSOURI PACIFIC RAILROAD TOGETHER WITH PART OF SAID ABANDONED RAILROAD LYING EAST OF 56TH STREET, WEST OF 55TH STREET AND SOUTH OF FRANCES STREET.

I HEREBY FOUND THE PIPES AND BEING A AND REC AND STREET 1 RIGHT-OF-WAY OF LOTS OF STREET / ALLEY WITH RAILROAD FOLLOWS THEREON S89°17'11" E 177.1 FEET OF LINE OF TO THE FEET OF STREET; CENTER; DISTANT



JULY 8 DATE

KNOW WITHIN STREET RATIFY PUBLIC DISTRICT SYSTEM CROSS THE CA ALL KIP THROU (8) FC LOOSE OTHER BY AN BETWEL

ALMA,

STATE COUNT THE F OF AL

STATE COUNT THE F OF AT

THIS SURV

I HER

I HER DATE

APPROVAL OF CITY PLANNING BOARD

AT OF ALMA'S ADDITION WAS APPROVED BY THE CITY PLANNING BOARD OF THE CITY OF OMAHA THIS 7th DAY OF August, 1991.

Michael D. Daley
CHAIRMAN

APPROVAL OF OMAHA CITY COUNCIL

APPROVED AND ACCEPTED BY THE CITY COUNCIL OF OMAHA THIS 1st DAY OF October, 1991.

James J. ...
PRESIDENT

REVIEW BY DOUGLAS COUNTY ENGINEER

LAT OF ALMA'S ADDITION WAS REVIEWED BY THE DOUGLAS COUNTY ENGINEER'S OFFICE THIS DAY OF

John P. ...
DOUGLAS COUNTY ENGINEER

