

GRAN

RIDDLE SUB-DIVISION of the North East Quarter

of the South West quarter of Section Thirty six in Township No 75 North, & Range No 44 West in the City of Council Bluffs, Pottawattamie County, Iowa

Res 99-90 4-29-74
99-55209



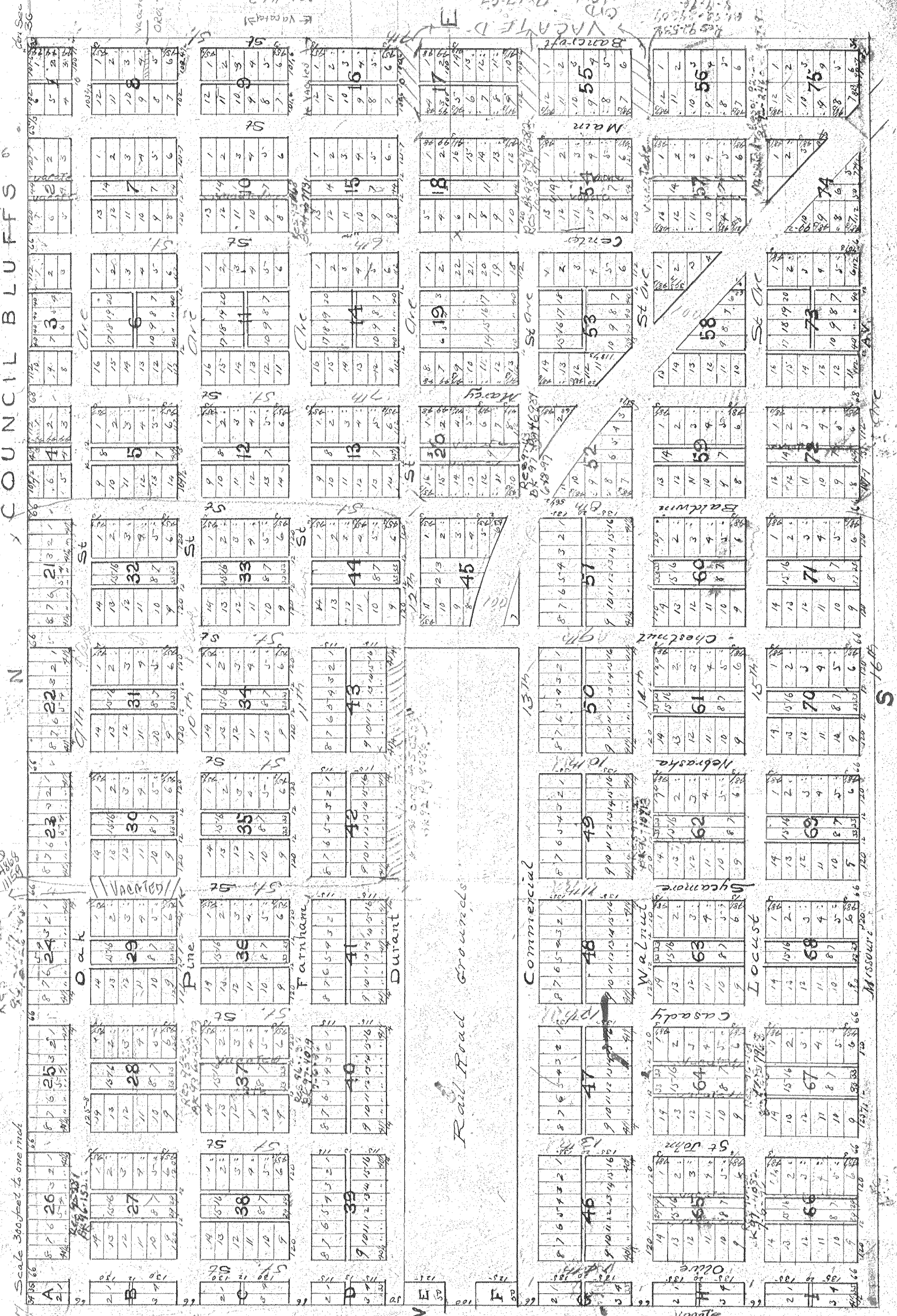
This Addition is situated upon the North East quarter of the South West quarter of Section 36 in Twp 75 North, & Range 44 West. The size of Lots appear upon ^{the respective lines or upon} each tier. A stake is placed at each corner of each lot, a stone is placed at all the corners so indicated upon the plat. Each stone has a mark (+) indicating the true corner at the intersection of the cross; the bearings of lines is due North and South, East and West with a Magnetic Variation of 11° 15' East. Surveyed May 1857. I certify the within plat and description to be an accurate representation of the size of lots, bearings of lines and width of streets and alleys upon this tract. Myself and David Fosterin and myself were chairman

Thomas Fosterin
County Surveyor of
Pottawattamie County, Iowa

Date of Filing		Nature of Instru'mt	RECORDED
DAY	YEAR		BOOK

RIDDLES SUBDIVISION

COUNCIL BLUFFS



Res 24-256
95-1680
16-2-94

See Book 20 Page 100
See Book 20 Page 66
Scale 300 feet to one inch

15-127
3-2-90
15-2-94
15-2-95

Vacate
Res 94-291
81-95-3
14-95
15-6-94

See Parted Vacation Book 357 Page 490 Block 531/132