



DEED 2005101498



AUG 17 2005 14:25 P 7

Nbr Doc Stamp Tax
8-17-05
Date
sexo4
Fv <i>cl</i>

THIS PAGE INCLUDED FOR INDEXING
PAGE DOWN FOR BALANCE OF INSTRUMENT

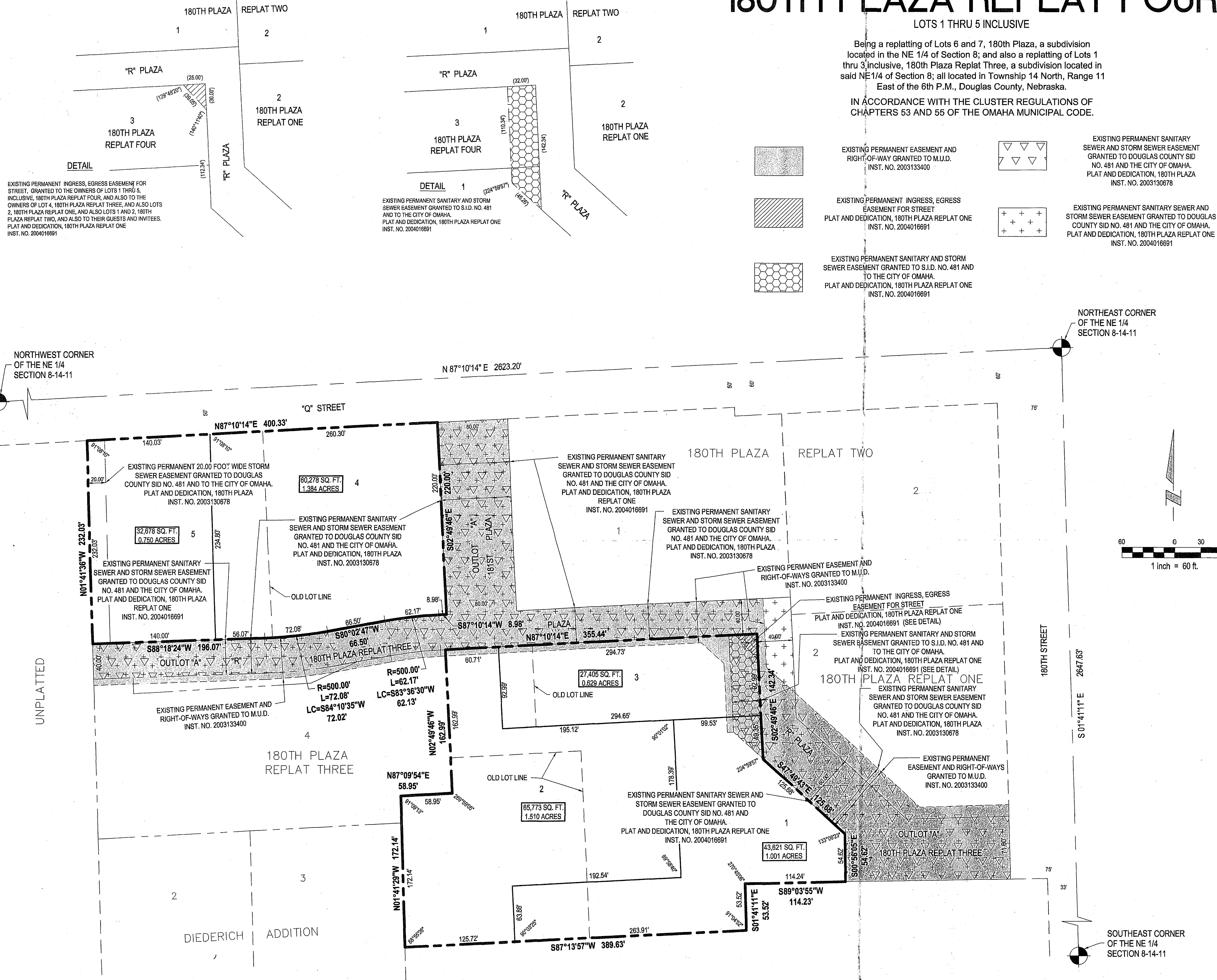
Dead
 FEE 40⁰⁰ FB *New - OC - 28749*
 OC - 28741 - lots (over) } old
 OC - 28742 - lots 1-3 }
 7
 10 BKP _____ C/O _____ COMP _____ (B.C.)
 DEL *MS* SCAN _____ FV *MCJ*
step at 8/17/05

180TH PLAZA REPLAT FOUR

LOTS 1 THRU 5 INCLUSIVE

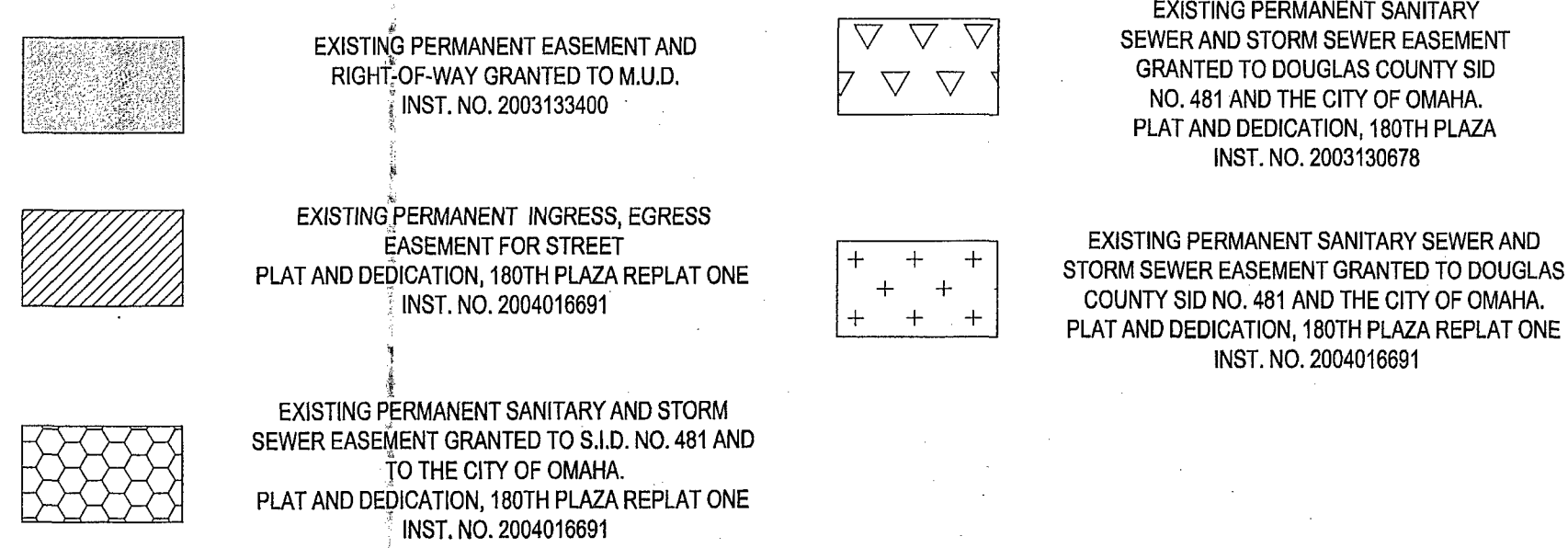
Being a replatting of Lots 6 and 7, 180th Plaza, a subdivision located in the NE 1/4 of Section 8; and also a replatting of Lots 1 thru 3 inclusive, 180th Plaza Replat Three, a subdivision located in said NE 1/4 of Section 8; all located in Township 14 North, Range 11 East of the 6th P.M., Douglas County, Nebraska.

IN ACCORDANCE WITH THE CLUSTER REGULATIONS OF CHAPTERS 53 AND 55 OF THE OMAHA MUNICIPAL CODE.



DETAIL
EXISTING PERMANENT INGRESS, EGRESS EASEMENT FOR STREET, GRANTED TO THE OWNERS OF LOTS 1 THRU 5, INCLUSIVE, 180TH PLAZA REPLAT FOUR, AND ALSO TO THE OWNERS OF LOT 4, 180TH PLAZA REPLAT THREE, AND ALSO LOTS 2, 180TH PLAZA REPLAT ONE, AND ALSO LOTS 1 AND 2, 180TH PLAZA REPLAT TWO, AND ALSO TO THEIR GUESTS AND INVITEES. PLAT AND DEDICATION, 180TH PLAZA REPLAT ONE. INST. NO. 2004016691

DETAIL 1
EXISTING PERMANENT SANITARY AND STORM SEWER EASEMENT GRANTED TO S.I.D. NO. 481 AND TO THE CITY OF OMAHA. PLAT AND DEDICATION, 180TH PLAZA REPLAT ONE. INST. NO. 2004016691



NOTES

- A PERMANENT RECIPROCAL INGRESS AND EGRESS, PARKING, SIDEWALK AND PEDESTRIAN EASEMENT IS GRANTED TO THE OWNERS OF LOTS 1 THRU 5, INCLUSIVE, 180TH PLAZA REPLAT FOUR, THEIR GUESTS AND INVITEES; AND ALSO SAID EASEMENT IS GRANTED TO THE OWNERS OF LOT 4, 180TH PLAZA REPLAT THREE, THEIR GUESTS AND INVITEES; AND ALSO LOT 2, 180TH PLAZA REPLAT ONE, THEIR GUESTS AND INVITEES; AND ALSO LOTS 1 AND 2, 180TH PLAZA REPLAT TWO, THEIR GUESTS AND INVITEES; SAID EASEMENT IS GRANTED OVER ALL OF SAID LOTS 1 THRU 5, INCLUSIVE, 180TH PLAZA REPLAT FOUR, EXCEPT THOSE PARTS OF SAID LOTS 1 THRU 5, INCLUSIVE, 180TH PLAZA REPLAT FOUR, WHICH ARE OCCUPIED BY BUILDINGS AS CONSTRUCTED. THE FOREGOING RECIPROCAL PARKING EASEMENT SHALL NOT BE APPLICABLE TO SAID LOT 1, 180TH PLAZA REPLAT TWO.
- A PERMANENT SANITARY SEWER AND STORM SEWER EASEMENT IS GRANTED TO DOUGLAS COUNTY SID NO. 481 AND TO THE CITY OF OMAHA OVER ALL OF OUTLOT "A".
- ALL LOT LINES ARE RADIAL TO CURVED STREETS UNLESS SHOWN AS (NR).
- ALL ANGLES ARE 90° UNLESS OTHERWISE NOTED.
- ALL DIMENSIONS SHOWN WITH PARENTHESES ARE FOR EASEMENT LOCATION.
- A PERMANENT INGRESS/EGRESS EASEMENT TO AND FROM OUTLOT "A" IS GRANTED TO THE OWNERS, THEIR GUESTS AND THEIR INVITEES, OF THE PROPERTY SOUTH AND WEST OF AND ABUTTING SAID OUTLOT "A".
- LOTS 1 THROUGH 5, INCLUSIVE, WILL BE DEVELOPED IN ACCORDANCE WITH THE CLUSTER REGULATIONS OF CHAPTERS 53 AND 55 OF OMAHA MUNICIPAL CODE.
- DIRECT VEHICULAR ACCESS TO 180TH STREET AND TO "Q" STREET IS NOT ALLOWED EXCEPT FROM OUTLOT "A", AND SAID ACCESS TO 180TH STREET WILL BE RIGHT-IN/RIGHT-OUT ONLY WHEN FUTURE IMPROVEMENTS ARE COMPLETED.

SURVEYOR'S CERTIFICATE

I hereby certify that I have made a ground survey of the subdivision described herein and that permanent monuments have been placed at all corners of all lots, streets, angle points and ends of all curves in 180th Plaza Replat Four (the lots numbered as shown) being a replatting of Lots 6 and 7, 180th Plaza, a subdivision located in the NE 1/4 of Section 8; and also a replatting of Lots 1 thru 3, 180th Plaza Replat Three, a subdivision located in said NE 1/4 of Section 8; all located in Township 14 North, Range 11 East of the 6th P.M., Douglas County, Nebraska.

Containing an area of 2,297,700 square feet or 5.275 acres, more or less.

Robert Clark, LS-219
Date: 07-12-2005

DEDICATION

Know all men by these presents that we, KVI Associates, Inc., Owners of the property described in the Certification of Survey and embraced within the plat, have caused said land to be subdivided into lots to be numbered as shown, said subdivision to be hereafter known as 180TH PLAZA REPLAT FOUR (lots numbered as shown), and we do hereby ratify and approve of the disposition of our property, and we do hereby grant the easements as shown on the plat. We do further grant a perpetual easement to the Omaha Public Power District, Qwest Communications and any company which has been granted a franchise to provide a cable television system in the area to be subdivided, their successors and assigns, to erect, operate, maintain, repair and renew poles, wires, cables, conduits and other related facilities, and to extend thereon wires or cables for the carrying and transmission of electric current for light, heat and power and for the transmission of signals and sounds of all kinds including signals provided by a cable television system, and the reception on, over, through, under and across all open spaces, common ground, recreational areas and nonpublic roads. No permanent buildings or retaining walls shall be placed in the said easement ways, but the same may be used for gardens, shrubs, landscaping and other purposes that do not then or later interfere with the aforesaid uses or rights herein granted.

In witness whereof, we do set our hands.

KVI ASSOCIATES, INC.
George W. Venteicher
George W. Venteicher, President

ACKNOWLEDGEMENT OF NOTARY

STATE OF NEBRASKA)
COUNTY OF DOUGLAS)
On this 12th day of July, 2005, before me, the undersigned, a Notary Public in and for said County, personally came George W. Venteicher, President of KVI Associates, Inc., who is personally known to be the identical person whose name is affixed to the Dedication on this plat and acknowledged the same to be his voluntary act and deed as such officer of said corporation.

WITNESS my hand and Notarial Seal the day and year last above written.

Notary Public
Notary Public

COUNTY TREASURER'S CERTIFICATE

This is to certify that I find no regular or special taxes due or delinquent against the property described in the Surveyor's Certificate and embraced in this plat as shown by the records of this office.

County Treasurer
COUNTY TREASURER
7-20-05
DATE



APPROVAL OF CITY ENGINEER OF OMAHA

I hereby certify that adequate provisions have been made for compliance with Chapter 53 of the Omaha Municipal Code.

City Engineer
CITY ENGINEER
8/16/05
DATE

APPROVAL OF OMAHA CITY PLANNING DIRECTOR

This plat of 180TH PLAZA REPLAT FOUR was approved as a subdivision of 180TH PLAZA in compliance with Section 53-10 (3), Omaha Municipal Code, with plat requirements waived per Section 7.08, Home Rule Charter of the City of Omaha. This minor subdivision plat is void if this plat is not recorded within thirty (30) days of the date of the Planning Director's signature.

City Planning Director
CITY PLANNING DIRECTOR
8/16/2005
DATE

E&A CONSULTING GROUP, INC.
ENGINEERS • PLANNERS • SURVEYORS

1700 SOUTH 28TH STREET, SUITE 100
OMAHA, NE 68137
PHONE: (402) 885-4700
FAX: (402) 885-3589

180TH PLAZA REPLAT FOUR
OMAHA, NEBRASKA

MINOR PLAT

Revisions	Date
()	
()	
()	
()	

Proj No: 2000044.11
Date: 08/28/2005
Designed By:
Drawn By: DAS
Checked By (Desgn):
Checked By (Insp):
Checked By (Cad Mgr):
Scale: 1" = 60'
Sheet 1 of 1