

"O'Connor Subdivision"

a MINOR SUBDIVISION of Lots 1,2,3 and 4-Johnson Subdivision, located in the S1/2 of the NE1/4 of Section 27-T12N-R11E of the 6th P.M., Cass County, Nebraska

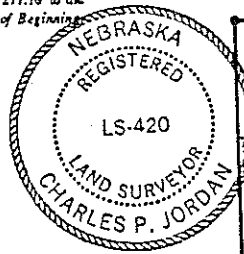
SURVEYOR'S CERTIFICATE

I hereby certify that I have accurately surveyed and staked the boundary of "O'CONNOR SUBDIVISION", located in the S1/2 of the NE1/4 of Section 27-T12N-R11E of the 6th P.M., Cass County, Nebraska, being described as follows:

Beginning at the SE Corner of Lot 1-Johnson Subdivision; thence N 89°48'39" W, along the South line of Johnson Subdivision, 901.48' to the SW Corner of Lot 4-Johnson Subdivision; thence N 00°00'00" E, along the West line of said Lot 4, 627.47' to the NW Corner of said Lot 4; thence S 89° 53'54" E, along the North line of Johnson Subdivision, 624.32' to the NE Corner of Lot 2, Johnson Subdivision; thence S 0°00'00" W, along the East line of said Lot 2, 314.21' to the NW Corner of Lot 1-Johnson Subdivision; thence S 89°50'59" E, along the North line of said Lot 1, 277.16' to the NE Corner of said Lot 1; thence S 0°00'00" W, along the East line of said Lot 1, 314.40' to the Point of Beginning. Contains 11.00 Acres, more or less.

Signed this 17th day of December, 1996.

Charles P. Jordan
CHARLES P. JORDAN LS420



ACKNOWLEDGEMENT OF NOTARY

DEDICATION
KNOW ALL MEN BY THESE PRESENTS that we, PATRICK A. O'CONNOR and VALERIE A. O'CONNOR, (husband & wife), being the sole owners of Lots 1,2,3 and 4 Johnson Subdivision, do hereby approve of our land being replatted, as shown on this plat, to now be known as "O'CONNOR SUBDIVISION". We dedicate to the public, the street right of way, as shown hereon, for public use and we do also grant 5' wide easements along all lot lines for the placement and maintenance of any and all public utilities, on, over, through, under and across said easements. This subdivision is also subject to any and all easements of record, as of the last date shown hereon.

STATE OF _____)
COUNTY OF _____)
On this 17th day of December, 1996, before me, a notary public, duly commissioned and qualified in and for said County, did appear PATRICK A. O'CONNOR and VALERIE A. O'CONNOR, (husband & wife), who are personally known by me to be the identical persons whose names appears on this plat, and they did acknowledge their execution of the foregoing plat approval to be their voluntary act and deed.

Patrick A. O'Connor
PATRICK A. O'CONNOR
Valerie A. O'Connor
VALERIE A. O'CONNOR

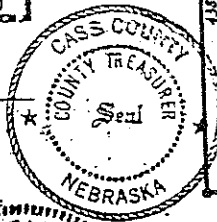
Jay W. Emory
NOTARY PUBLIC



COUNTY TREASURER'S CERTIFICATE

This is to certify that I find no regular or special taxes due against the property described within the Surveyor's certificate and embraced within this plat, as shown by the records of this office, this 17 day of December, 1996.

Richard Wassinger
RICHARD WASSINGER, CO. TREASURER



APPROVAL OF CHAIRMAN AND BOARD OF TRUSTEES

This plat of "O'CONNOR SUBDIVISION", is hereby approved by the Chairman and the Board of Trustees of the Village of Louisville, Nebraska, this 17 day of December, 1996.

Charles M. Morris
VILLAGE CLERK
Thomas R. Steeter
CHAIRMAN, Board of Trustees

APPROVAL OF VILLAGE PLANNING BOARD

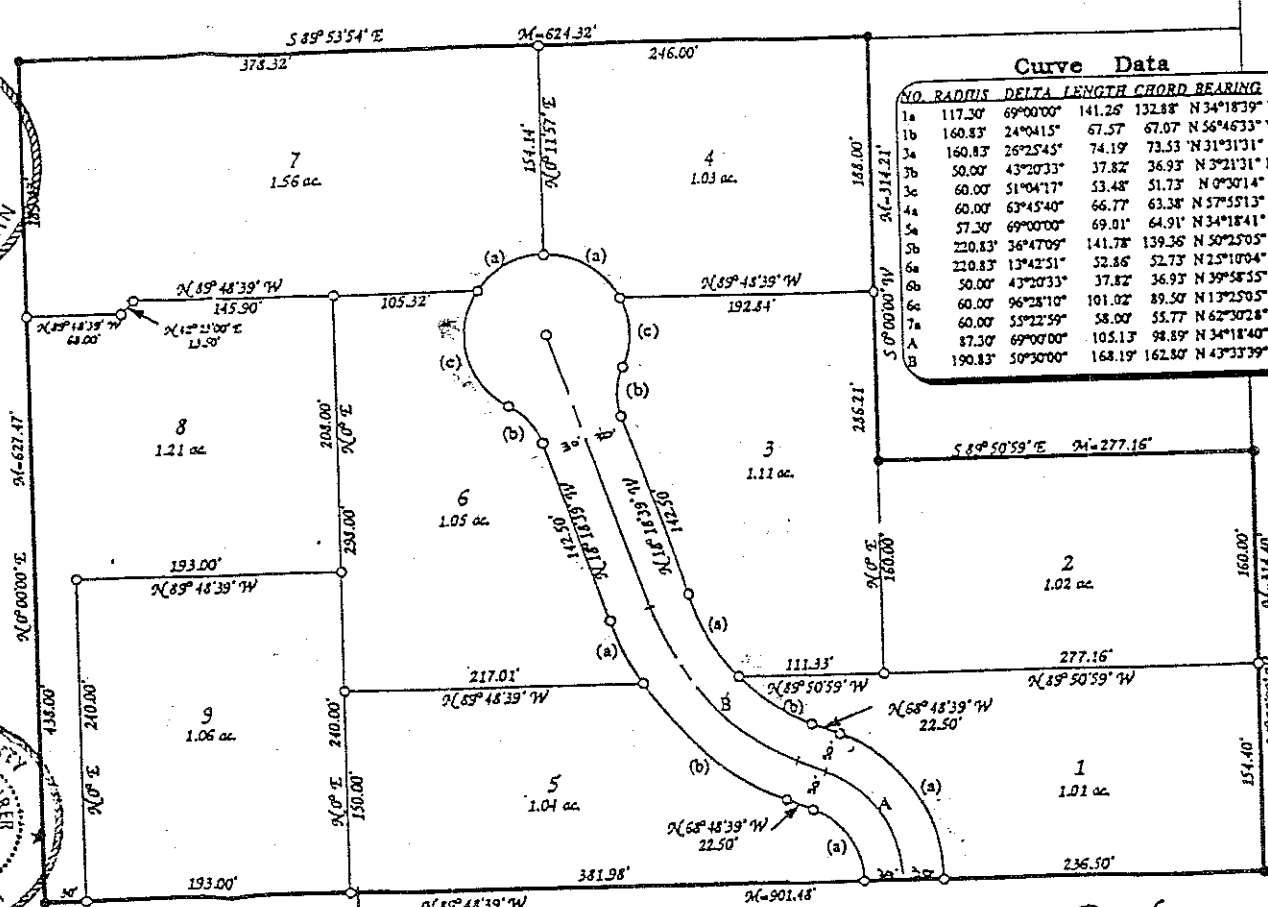
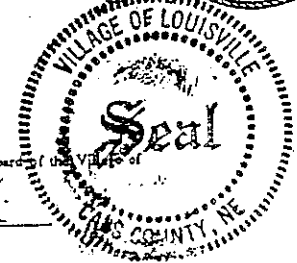
This plat of "O'CONNOR SUBDIVISION", is hereby approved by the Planning Board of the Village of Louisville, Nebraska, this 12 day of December, 1996.

Larry Miller
Chairman, Planning Board

APPROVAL OF VILLAGE ADMINISTRATING OFFICIAL

This plat of "O'CONNOR SUBDIVISION", is hereby approved by the Village Adminstrating Official of the Village of Louisville, Nebraska, this 12 day of December, 1996.

Thomas R. Steeter
Village Adminstrating Official



NO.	RADIUS	DELTA	LENGTH	CHORD	BEARING
1a	117.30	69°00'00"	141.26	132.88	N 34°18'39" W
1b	160.83	24°04'15"	67.57	67.07	N 56°46'33" W
2a	160.83	26°25'45"	74.19	73.53	N 31°31'31" W
3a	50.00	43°20'33"	37.82	36.93	N 3°21'31" E
3b	60.00	51°04'17"	53.48	51.73	N 0°30'14" W
4a	60.00	63°45'40"	66.77	63.38	N 57°51'13" W
4b	57.30	69°00'00"	69.01	64.91	N 34°18'41" W
5a	220.83	36°47'09"	141.78	139.36	N 50°25'05" W
5b	220.83	13°42'51"	52.86	52.73	N 25°10'04" W
6a	50.00	43°20'33"	37.82	36.93	N 3°21'31" W
6b	60.00	51°04'17"	53.48	51.73	N 0°30'14" W
7a	60.00	96°28'10"	101.02	89.50	N 13°25'05" W
7b	60.00	55°22'59"	58.00	55.77	N 62°30'28" E
8	87.30	69°00'00"	105.13	98.89	N 34°18'40" W
9	190.83	50°30'00"	168.19	162.80	N 43°33'39" W



Scale 1" = 100'
P=Plat distance
M=Measured dist.
R=Record dist.
C=Computed dist.
• = Found rebar
o = Set 5/8"x24" rebar
• = Found pt pipe
• = Found open pipe

Minor Subdivision

JORDAN SURVEYING COMPANY
LAND SURVEYORS
PLATTSMOUTH, NEBRASKA 68048 (402) 296-3750
Drawn by: K Jordan
Project No. 080996
Field Book-page 28,47
Disc 46

O'Connor

EXHIBIT A