



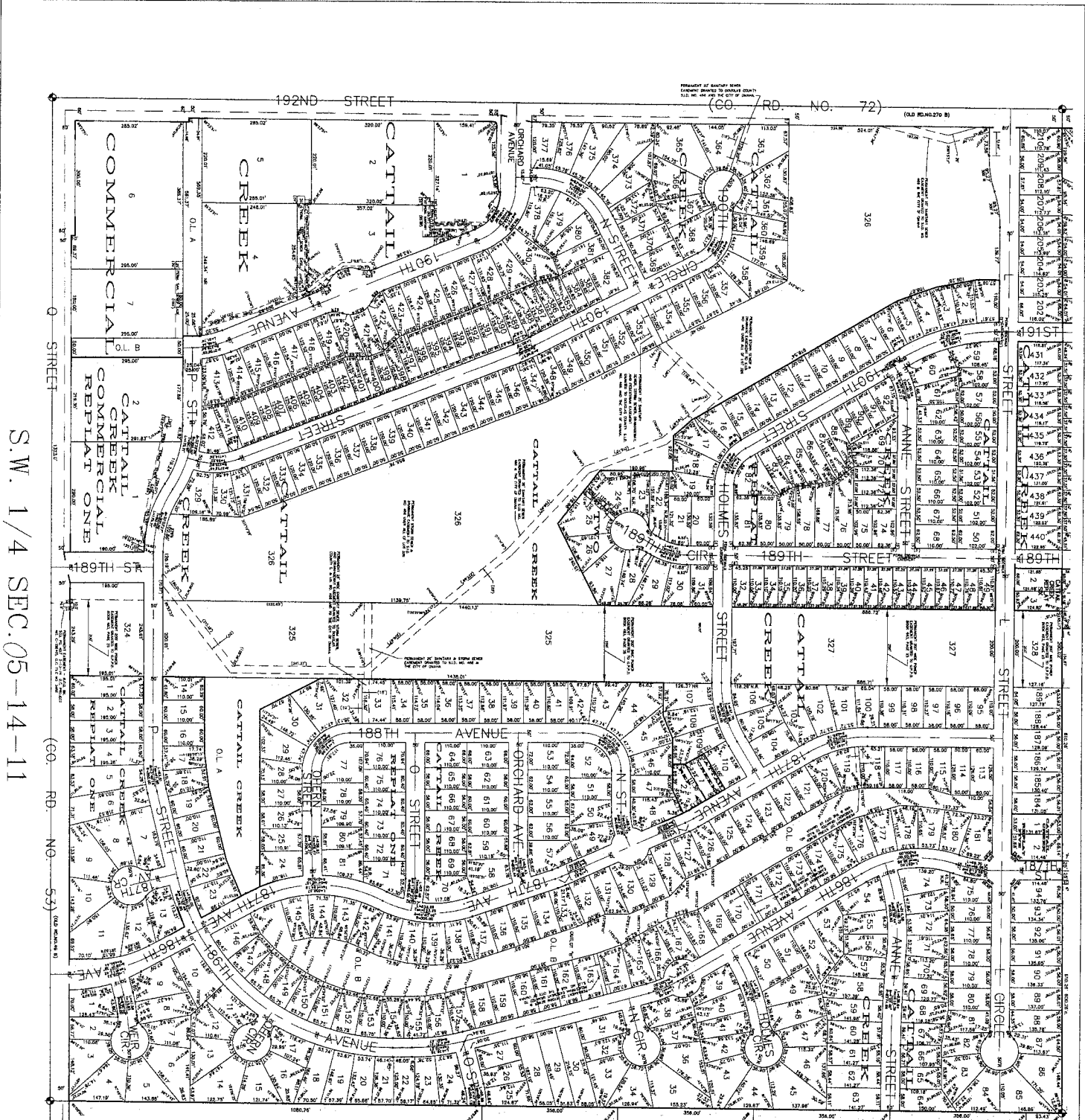
MISC 2004079553



JUN 17 2004 13:40 P 2

**THIS PAGE INCLUDED FOR INDEXING
PAGE DOWN FOR BALANCE OF INSTRUMENT**

Amig
 FEE 14.00 FB New-OC-05998
old-OC-05984
 BKP _____ C/O _____ COMP 6
 DEL _____ SCAN _____ FV MIS



S.W. 1/4 SEC. 05-14-11



DOUGLAS COUNTY ENGINEER
 156TH & W. MAPLE RD. OMAHA NE. 68116

DRAWN BY	DATE	COMMENTS
S.M.C.	8-29-2004	CATTAIL CREEK REPLAT FIVE (L1-2)
S.M.C.	3-22-2005	CATTAIL CREEK COMMERCIAL (L1-2, O.L. A, B)
S.M.C.	7-19-2005	CATTAIL CREEK COMMERCIAL REPLAT ONE
BB	7-10-2008	CATTAIL CREEK REPLAT SIX

SCALE: 1" = 100'

INFORMATION ON THIS SHEET SHOULD BE VERIFIED WITH THE FINAL PLAT BEFORE BEING USED.

NORTH ►